

List of pages in this Trip Kit

Trip Kit Index

Airport Information For TVSV

Terminal Charts For TVSV

Revision Letter For Cycle 13-2015

Change Notices

Notebook

General Information

Location: KINGSTOWN VCT
ICAO/IATA: TVSV / SVD
Lat/Long: N 13 08.7 W 061 12.6
Elevation: 66 ft

Airport Use: Public
Daylight Savings: Not Observed
UTC Conversion: +4:00 = UTC
Magnetic Variation: 14.0° W

Fuel Types: 100 Octane (LL), Jet A
Customs: Yes
Airport Type: IFR
Landing Fee: Yes
Control Tower: Yes
Jet Start Unit: No
LLWS Alert: No
Beacon: Yes
Night VFR Capable

Sunrise: 0941 Z
Sunset: 2235 Z

Runway Information

Runway: 07
Length x Width: 4649 ft x 148 ft
Surface Type: asphalt
TDZ-Elev: 10 ft
Lighting: Edge, ALS, REIL

Runway: 25
Length x Width: 4649 ft x 148 ft
Surface Type: asphalt
TDZ-Elev: 66 ft
Lighting: Edge

Communication Information

E T Joshua Tower: 118.800
E T Joshua Ground: 121.900
E T Joshua Approach: 120.800

TVSV/SVD

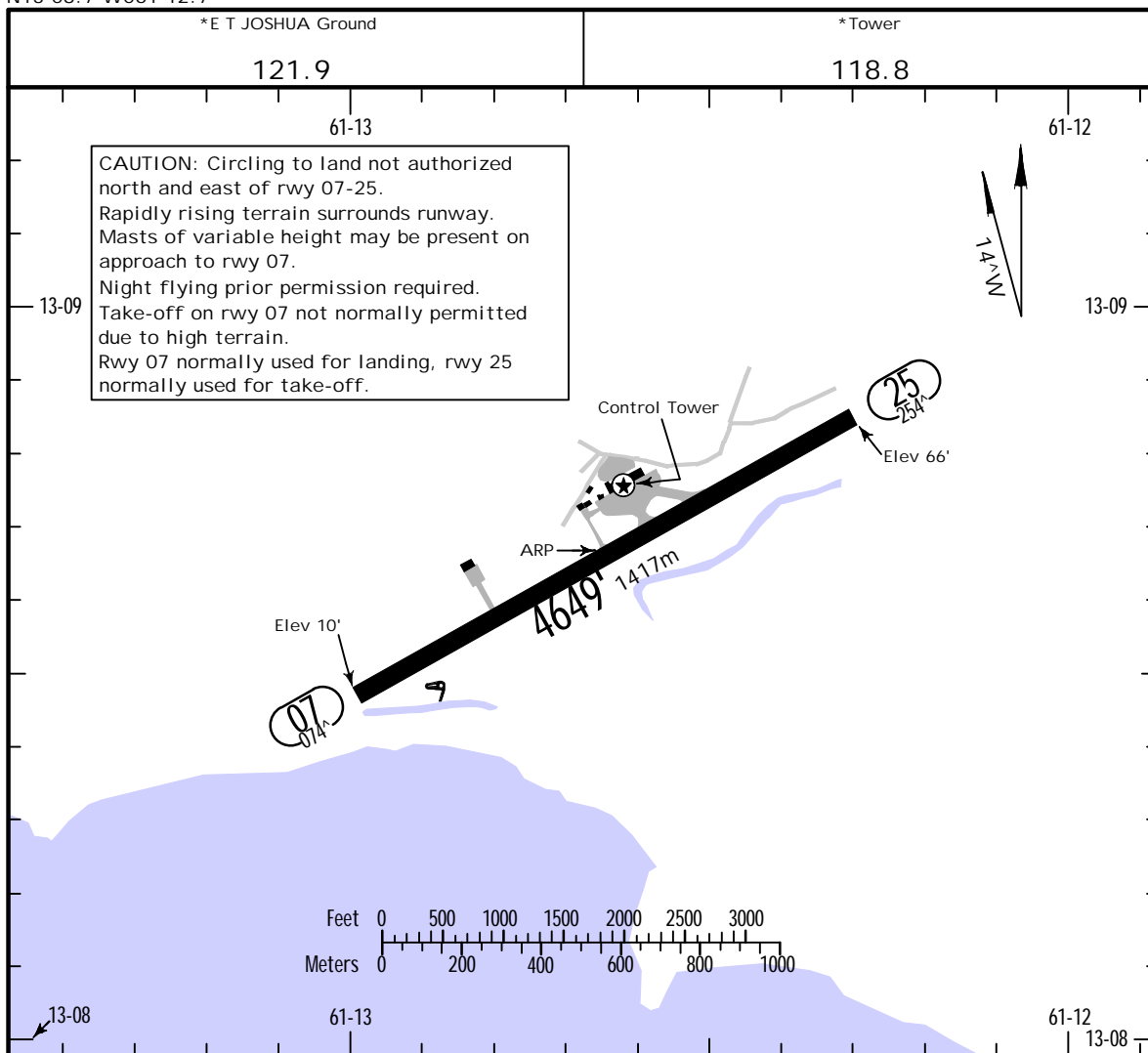
Apt Elev 66
N13 08.7 W061 12.7

JEPPESEN

2 AUG 13 (16-1)

KINGSTOWN, ST VINCENT

E T JOSHUA



ADDITIONAL RUNWAY INFORMATION

RWY		USABLE LENGTHS		TAKE-OFF	WIDTH
		Threshold	Glide Slope		
07	HIRL REIL 1 PAPI-L (angle 3.0°)			NA	148'
25	HIRL				45m

1 PAPI lights obscured and unusable beyond 8[^] left of Rwy 07 due to intervening terrain.

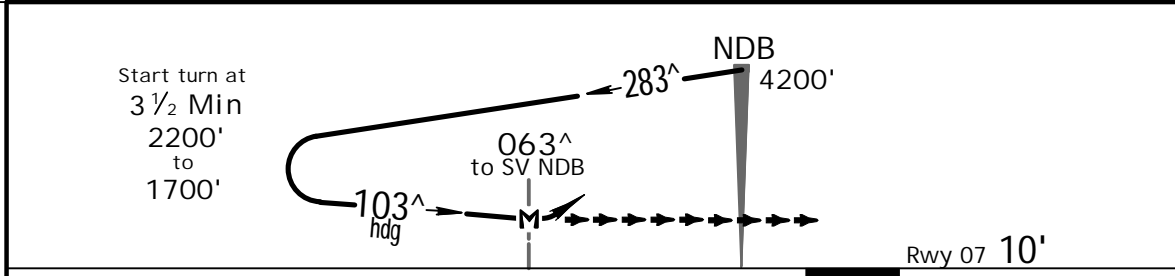
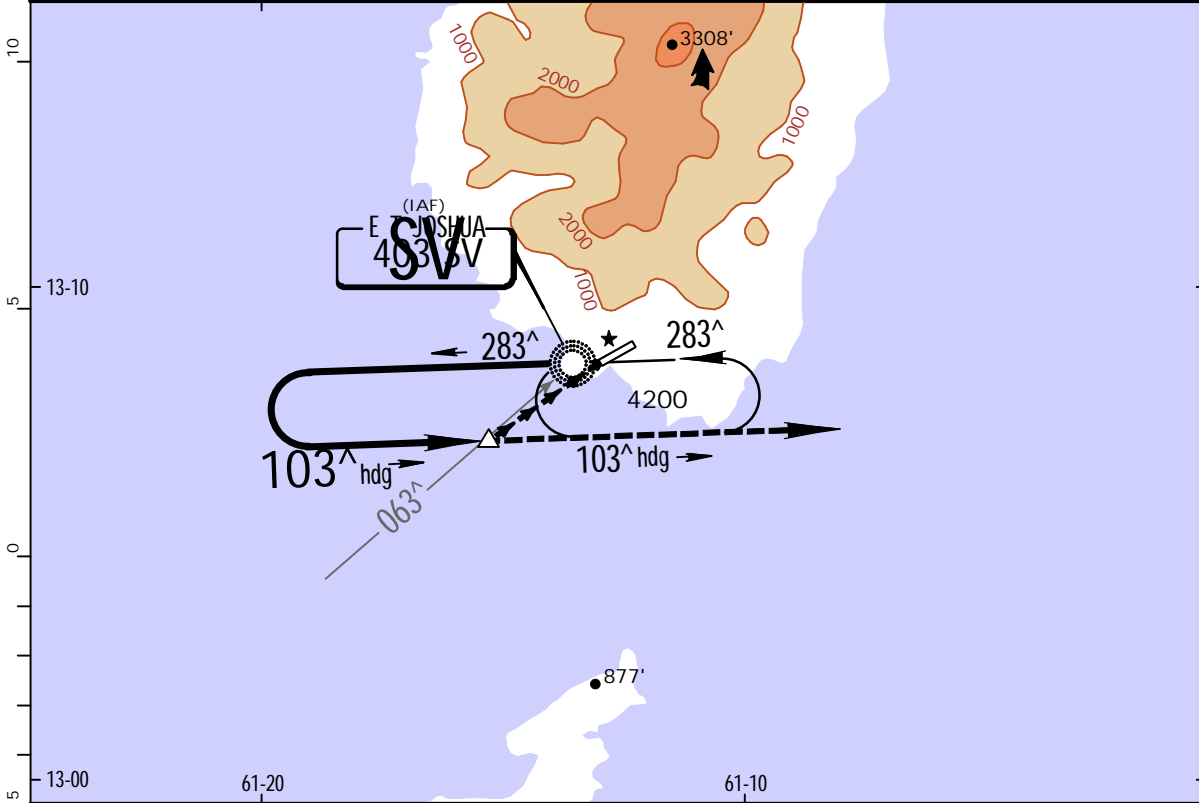
	TAKE-OFF		
	AIR CARRIER All Rwys	AIR CARRIER (FAR 121) All Rwys Adequate Vis Ref	
A	1/4	2 Eng	
B		1/4	
C			3 & 4 Eng
D			

TVSV/SVD
E T JOSHUA

JEPPESEN
2 AUG 13 (16-1)

KINGSTOWN, ST VINCENT
NDB Rwy 07

*E T JOSHUA Approach		*E T JOSHUA Tower		*Ground	
120.8		118.8		121.9	
NDB SV 403	Final Apch Crs 103 [^] hdg	No FAF	MDA(H) 1500' (1490')	Apt Elev 66' Rwy 07 10'	<p>MSA SV NDB</p>
<p>MISSED APCH: Upon reaching MDA(H), (must be at 063[^] bearing to SV NDB if runway lights are not in sight) maintain heading of 103[^] and climb to 4200' then follow instructions from ATC.</p>					
<p>Alt Set: hPa Rwy Elev: 0 hPa Trans level: By ATC Trans alt: 5200'</p> <p>1. Under no circumstances should a pilot after completing left turn on to final approach home to the NDB on the inbound leg. 2. After completing the left turn, terrain clearance cannot be maintained on a heading less than 103[^].</p>					



MAP at 063 [^] to SV NDB	REIL PAPI-L	4200' on 103 [^] hdg
-----------------------------------	-------------	-------------------------------

STRAIGHT-IN LANDING RWY 07	CIRCLE-TO-LAND
MDA(H) 1500' (1490')	

PANS OPS	A	3200m	Not Authorized
	B		
	C		
	D		

Chart changes since cycle 12-2015

ADD = added chart, REV = revised chart, DEL = deleted chart.

ACT PROCEDURE IDENT

INDEX

REV DATE

EFF DATE

KINGSTOWN, (E T JOSHUA - TVSV)

TERMINAL CHART CHANGE NOTICES

No Chart Change Notices for Airport TVSV