

List of pages in this Trip Kit

Trip Kit Index

Airport Information For TLPC

Terminal Charts For TLPC

Revision Letter For Cycle 13-2015

Change Notices

Notebook

General Information

Location: CASTRIES LCA
ICAO/IATA: TLPC / SLU
Lat/Long: N 14 01.2 W 060 59.6
Elevation: 22 ft

Airport Use: Public
Daylight Savings: Not Observed
UTC Conversion: +4:00 = UTC
Magnetic Variation: 14.0° W

Fuel Types: 100-130 Octane, Jet A-1
Repair Types: Minor Airframe, Minor Engine
Customs: Yes
Airport Type: IFR
Landing Fee: No
Control Tower: Yes
Jet Start Unit: No
LLWS Alert: No
Beacon: Yes
Night VFR Capable

Sunrise: 0939 Z
Sunset: 2236 Z

Runway Information

Runway: 09
Length x Width: 6227 ft x 148 ft
Surface Type: asphalt
TDZ-Elev: 20 ft
Lighting: Edge
Displaced Threshold: 430 ft

Runway: 27
Length x Width: 6227 ft x 148 ft
Surface Type: asphalt
TDZ-Elev: 10 ft
Lighting: Edge
Displaced Threshold: 1011 ft

Communication Information

George F. Charles Tower: 118.000

George F. Charles Ground: 121.900

St Lucia Approach: 119.800

TLPC/SLU

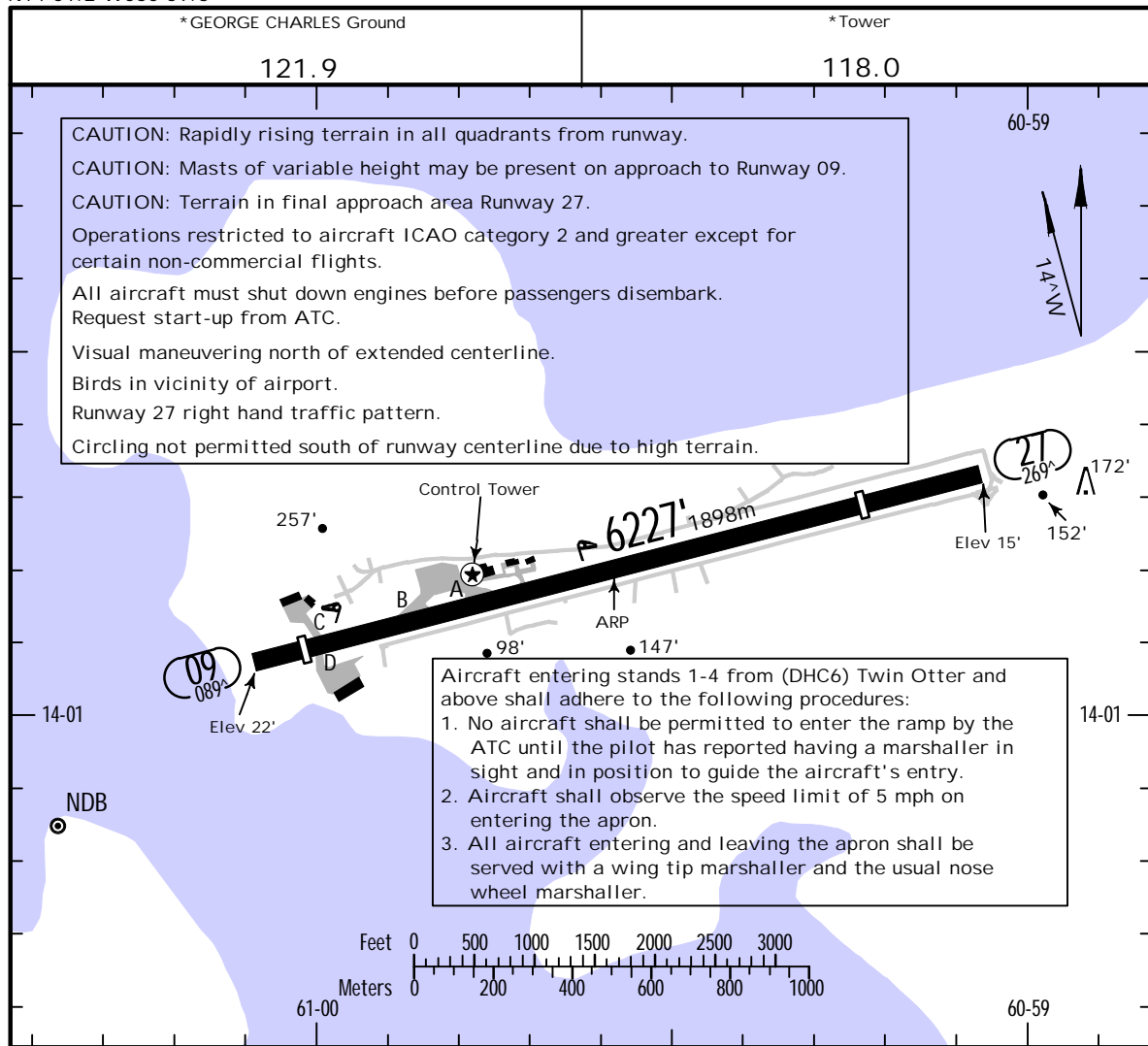
Apt Elev 22'
N14 01.2 W060 59.6



12 OCT 12 (16-1)

CASTRIES, ST LUCIA

GEORGE F CHARLES



RWY	HIRL PAPI-L (angle 3.0°)	USABLE LENGTHS			WIDTH
		Threshold	Landing Beyond Glide Slope	TAKE-OFF	
09		25305'	1617m		148'
1 27	HIRL	24724'	1440m	5735'	1748m
					45m

- 1 Landing Rwy 27 not permitted at night.
- 2 Last 492' (150m) is unavailable for landing distance computations.

	AIR CARRIER (JAA)		AIR CARRIER (FAR 121)	
	LVP must be in force All Rwy's RCLM (Day only) or RL	All Rwy's RCLM (Day only) or RL	All Rwy's Adequate Vis Ref	
A			2 Eng	
B	250m	400m	3 & 4 Eng	400m
C				
D	300m			

DEPARTURE PROCEDURE: To join A324 southbound: Climb to west to intercept FOF VOR R-195 direct to SV NDB. Remain clear of clouds and in sight of surface until passing 4200'. To join A324 northbound: Climb north. Remain clear of clouds and in sight of surface until passing 2000'. To join G642: Climb north to join G642 from the north. Remain clear of clouds and in sight of surface until passing 3250'.

TLPC/SLU

GEORGE F CHARLES



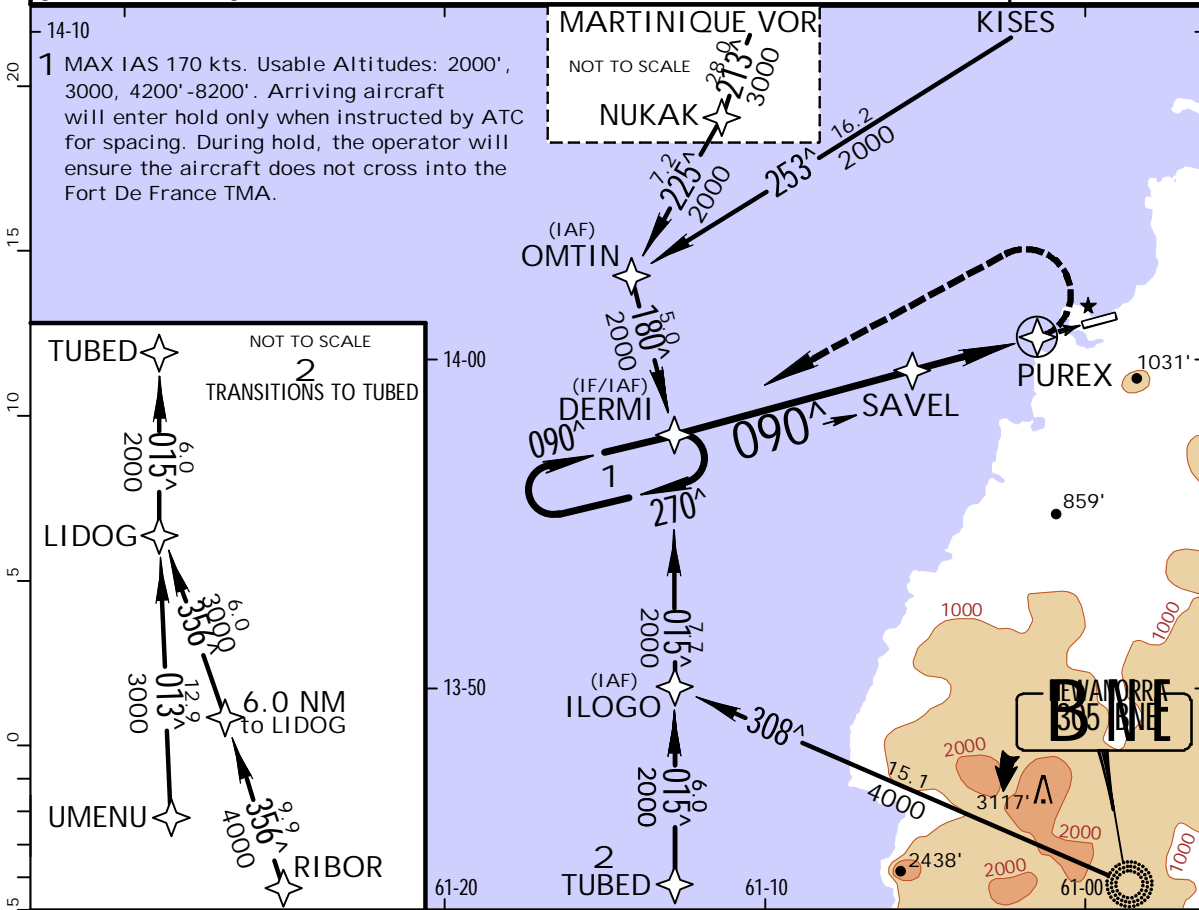
21 JUN 13
Eff. 27 Jun.

(12-1)

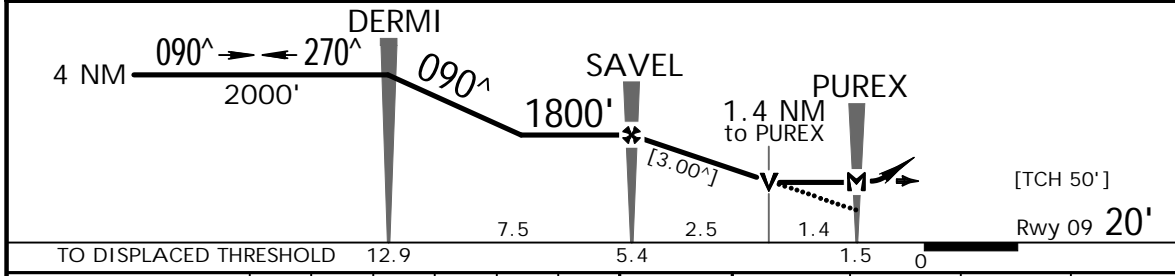
CAT A & B

CASTRIES, ST LUCIA RNAV (GNSS) Rwy 09

*ST LUCIA Approach 119.8		*GEORGE CHARLES Tower 118.0		*Ground 121.9	
RNAV	Final Apch Crs 090 [^]	Minimum Alt SAVEL 1800' (1780')	LNAV MDA(H) 980' (960')	Apt Elev 22' Rwy 09 20'	<p>4200'</p> <p>MSA ARP</p>
<p>MISSED APCH: Climbing LEFT turn to 2000' direct DERM I and hold, or as directed by ATC.</p>					
<p>Alt Set: hPa Rwy Elev: 1 hPa Trans level: By ATC Trans alt: 9000'</p> <p>1. CAUTION: Circling not permitted south of Rwy centerline due to high terrain. Terrain in final approach area Rwy 27. Landing Rwy 27 not permitted at night.</p> <p>2. Unless ATC clearance is obtained for an RNAV/GNSS procedure, the navigation and position-reporting of all aircraft shall be conducted with reference to conventional ground-based navigation aids.</p>					



DIST to THR RW-9	5.0	4.0	3.0
3.00 [^]	1662'	1344'	1025'



TO DISPLACED THRESHOLD	12.9	5.4	1.5	0		
Gnd speed-Kts	70	90	100	120	140	160
Descent Angle [3.00 [^]]	372	478	531	637	743	849
MAP at PUREX						

STRAIGHT-IN LANDING RWY 09 LNAV MDA(H) 980' (960')			CIRCLE-TO-LAND Not Authorized South of Runway Landing Rwy 27 Day Only.		
Max Kts			MDA(H)		
100	2800m		980' (958')	- 2800m	
135	2800m		1000' (978')	- 2800m	

PANS OPS	A	2800m	C	NOT APPLICABLE
	B		D	
	C			
	D			

CHANGES: New procedure.

JEPPesen, 2013. ALL RIGHTS RESERVED.

Chart changes since cycle 12-2015

ADD = added chart, REV = revised chart, DEL = deleted chart.

ACT	PROCEDURE IDENT	INDEX	REV DATE	EFF DATE
-----	-----------------	-------	----------	----------

CASTRIES, (GEORGE F. CHARLES - TLPC)

TERMINAL CHART CHANGE NOTICES

No Chart Change Notices for Airport TLPC