

List of pages in this Trip Kit

Trip Kit Index

Airport Information For TKPN

Terminal Charts For TKPN

Revision Letter For Cycle 13-2015

Change Notices

Notebook

General Information

Location: NEVIS I. XJR
ICAO/IATA: TKPN / NEV
Lat/Long: N 17 12.3 W 062 35.4
Elevation: 25 ft

Airport Use: Public
Daylight Savings: Not Observed
UTC Conversion: +4:00 = UTC
Magnetic Variation: 14.0° W

Fuel Types: 100 Octane (LL), Jet A-1
Customs: Yes
Airport Type: IFR
Landing Fee: No
Control Tower: Yes
Jet Start Unit: No
LLWS Alert: No
Beacon: Yes
Night VFR Capable

Sunrise: 0939 Z
Sunset: 2248 Z

Runway Information

Runway: 10
Length x Width: 4006 ft x 99 ft
Surface Type: asphalt
TDZ-Elev: 13 ft
Lighting: Edge, ALS
Displaced Threshold: 577 ft

Runway: 28
Length x Width: 4006 ft x 99 ft
Surface Type: asphalt
TDZ-Elev: 13 ft
Lighting: Edge
Stopway: 577 ft

Communication Information

Amory Tower Tower: 120.500
Amory Ground Ground: 121.600

Bradshaw Intl Approach: 119.600

TKPN

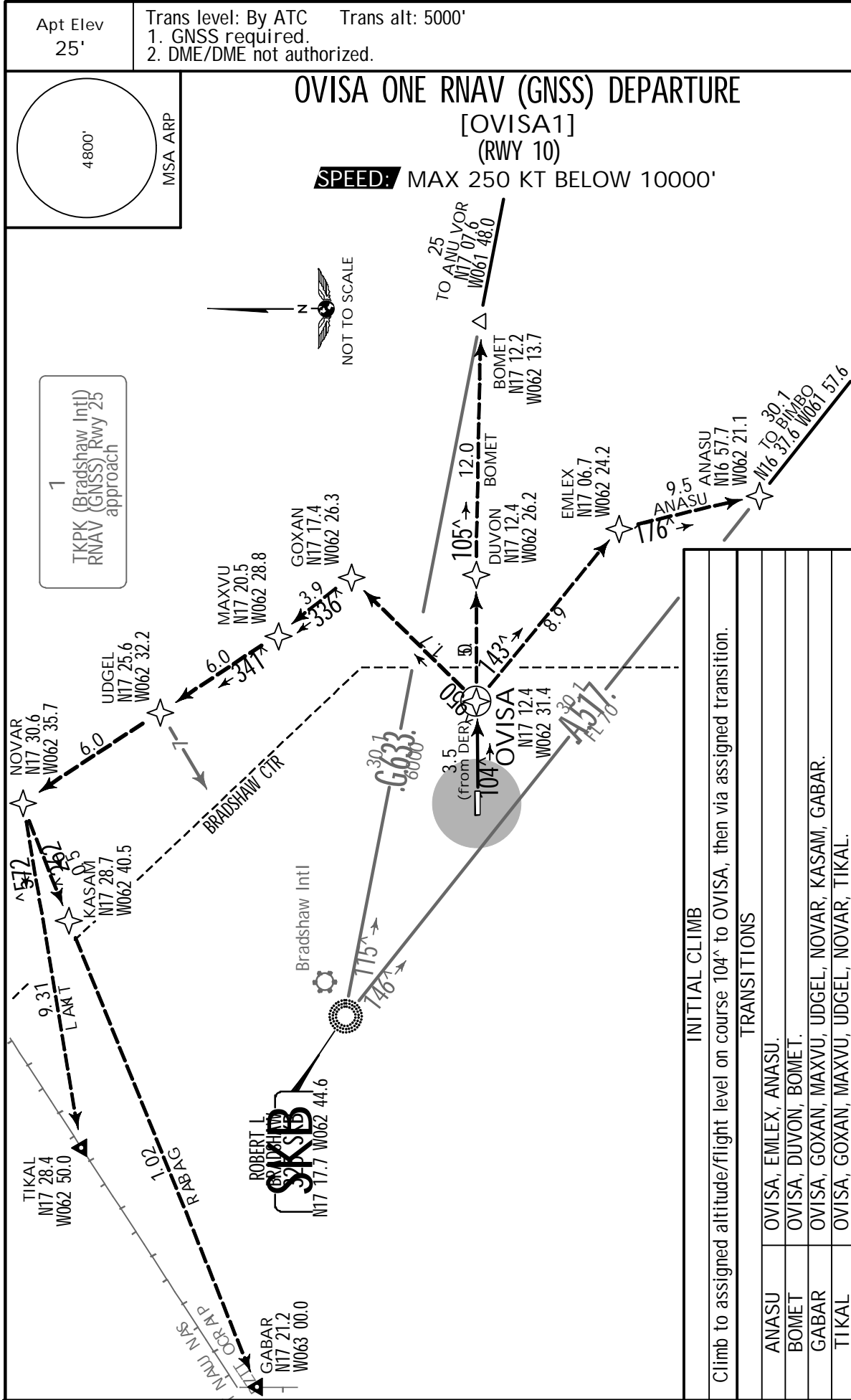
VW AMORY, NEVIS I

JEPPESSEN

23 DEC 11 10-3

CHARLESTOWN, NEVIS I

RNAV.SID.



TKPN/NEV

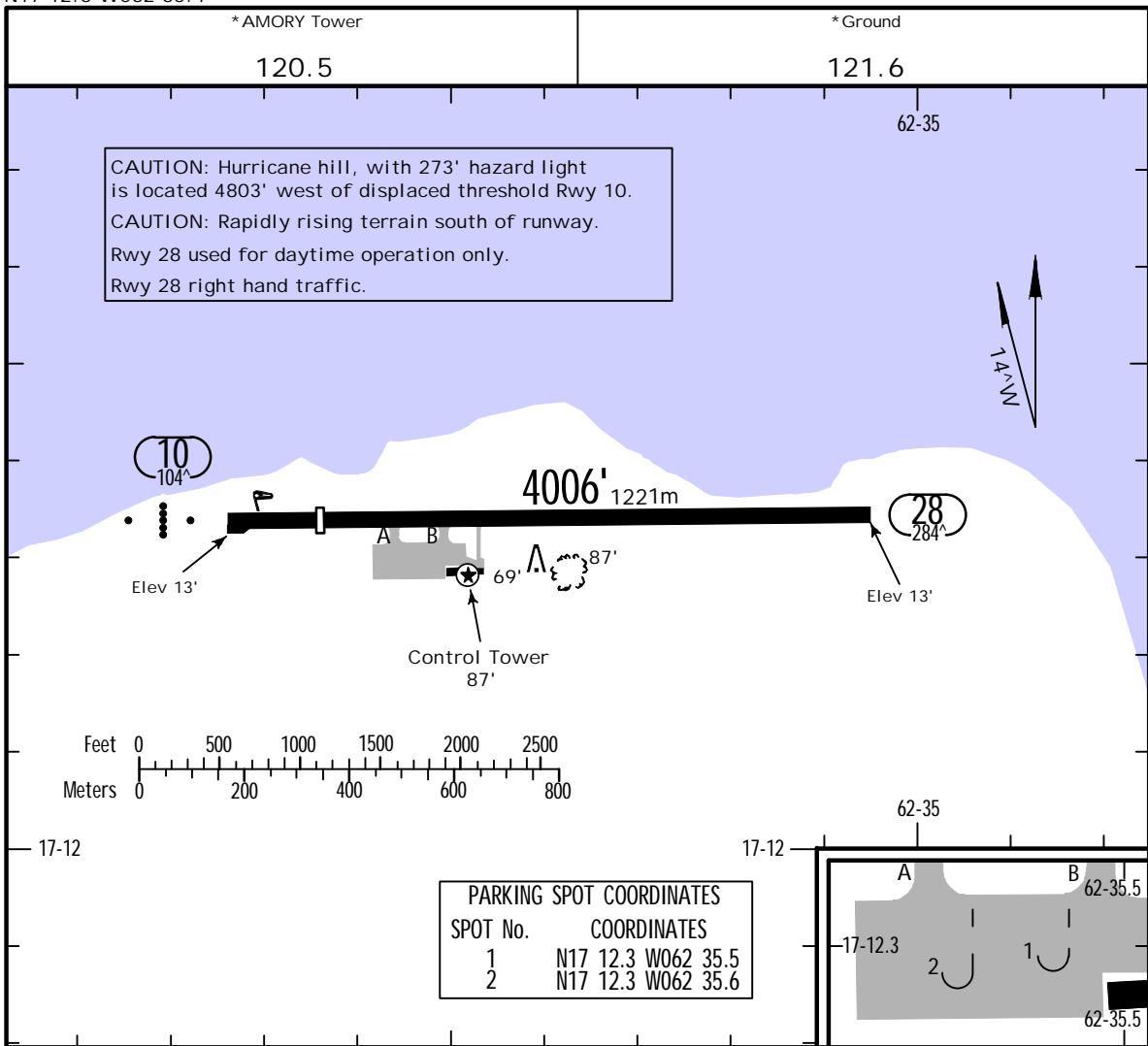
JEPPESEN

CHARLESTOWN, NEVIS I

Apt Elev 25
N17 12.3 W062 35.4

25 APR 14 (10-9)

VW AMORY, NEVIS I



PARKING SPOT COORDINATES	
SPOT No.	COORDINATES
1	N17 12.3 W062 35.5
2	N17 12.3 W062 35.6

ADDITIONAL RUNWAY INFORMATION

RWY		USABLE LENGTHS			WIDTH
		Threshold	Landing Beyond Glide Slope	TAKE-OFF	
10	HIRL SALS REIL 1 PAPI-L (3.5^)	3428' 1045m			98'
28	HIRL REIL				30m

1 WARNING: A hill with 273' and 247' hazard light is located 4800' west of the Rwy 10 threshold. The 3.5^ PAPI lights DO NOT provide clearance over this hill. PAPI guidance may be used only when north and east of hill.

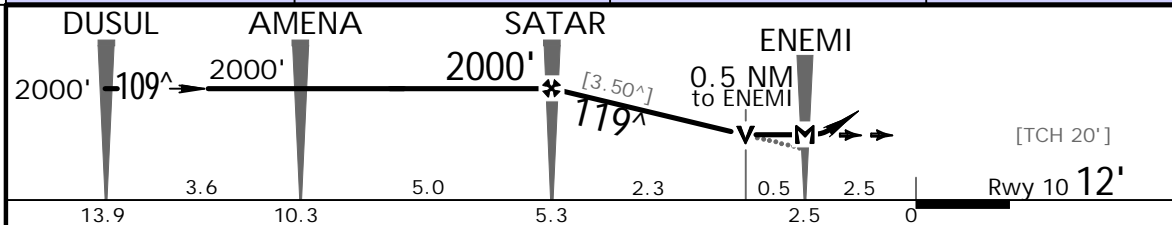
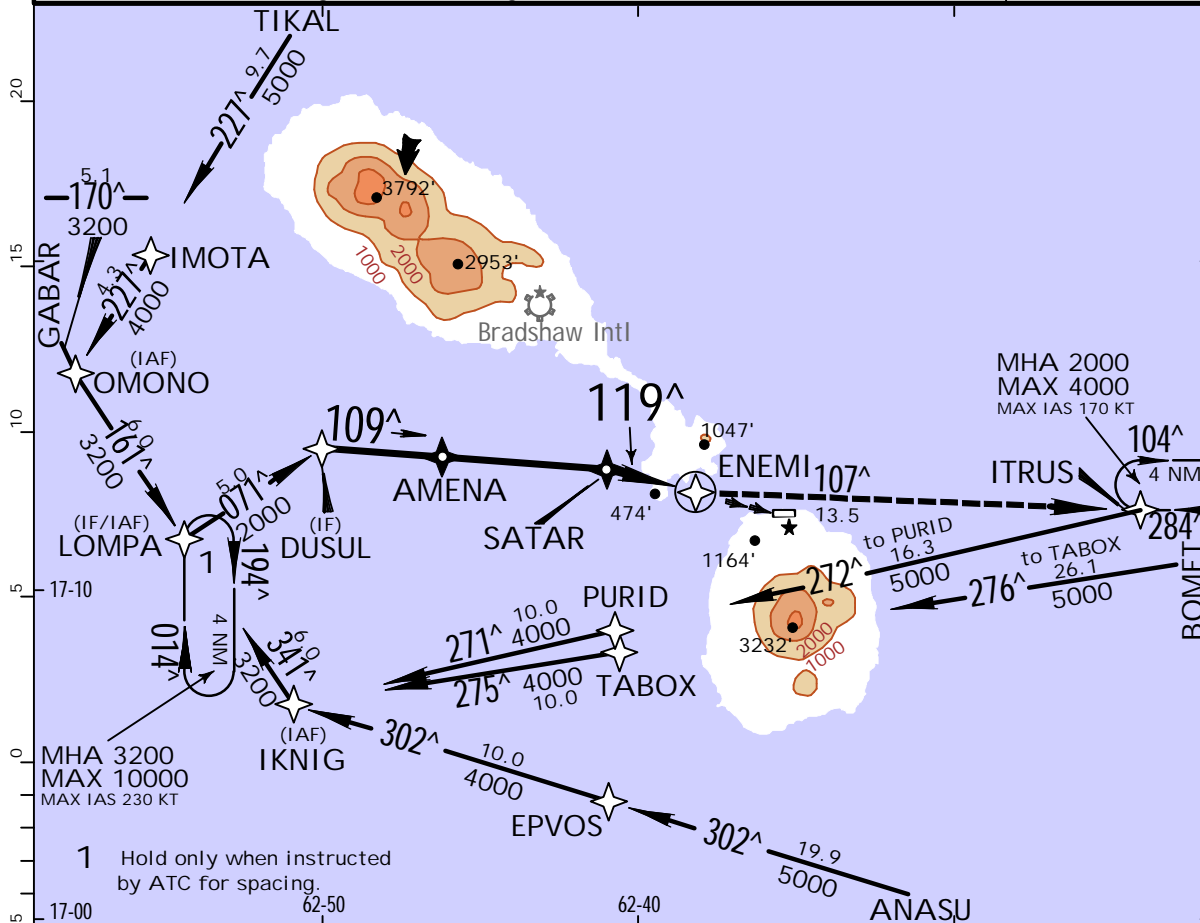
	TAKE-OFF			
	AIR CARRIER (JAA)		AIR CARRIER (FAR 121)	
	LVP must be in force ALL Rwys RCLM (Day only) or RL	All Rwys RCLM (Day only) or RL	All Rwys Adequate Vis Ref	
A	250m	400m	2 Eng	400m
B			3 & 4 Eng	
C	300m	400m		
D				

TKPN/NEV
VW AMORY, NEVIS I

JEPPESEN
2 AUG 13 (12-1)

CHARLESTOWN, NEVIS I
RNAV (GNSS) Rwy 10

*RL BRADSHAW Approach 119.6		*AMORY Tower 120.5		*Ground 121.6	
RNAV	Final Apch Crs 119[^]	Minimum Alt SATAR 2000' (1988')	MDA(H) 1160' (1148')	Apt Elev 25' Rwy 10 12'	4800'
MISSED APCH: Climbing LEFT turn to 2000' direct ITRUS and hold, or as directed by ATC.					
Alt Set: INCHES Trans level: By ATC Trans alt: 5000'					
1. GNSS Required. 2. WARNING: A hill with 273' and 247' hazard lights is located 4800' west of the Rwy 10 threshold. The 3.5 [^] PAPI lights DO NOT provide clearance over this hill. PAPI guidance may be used only when north and east of the hill.					
3. DME/DME not authorized. 4. Unless ATC clearance is obtained for an RNAV/GNSS procedure, the navigation and position-reporting of all aircraft shall be conducted with reference to conventional ground-based navigation aids.					
					MSA ARP



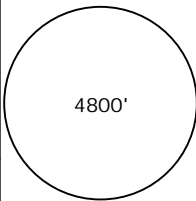
Gnd speed-Kts	70	90	100	120	140	160	SALS REIL PAPI	2000'	LT	ITRUS
Descent Angle [3.50 [^]]	434	557	619	743	867	991				
MAP at ENEMI										

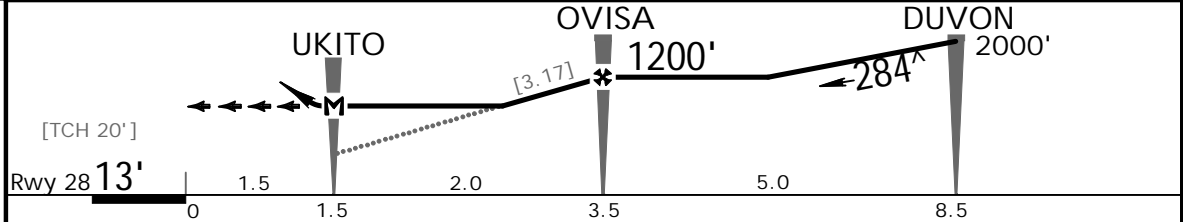
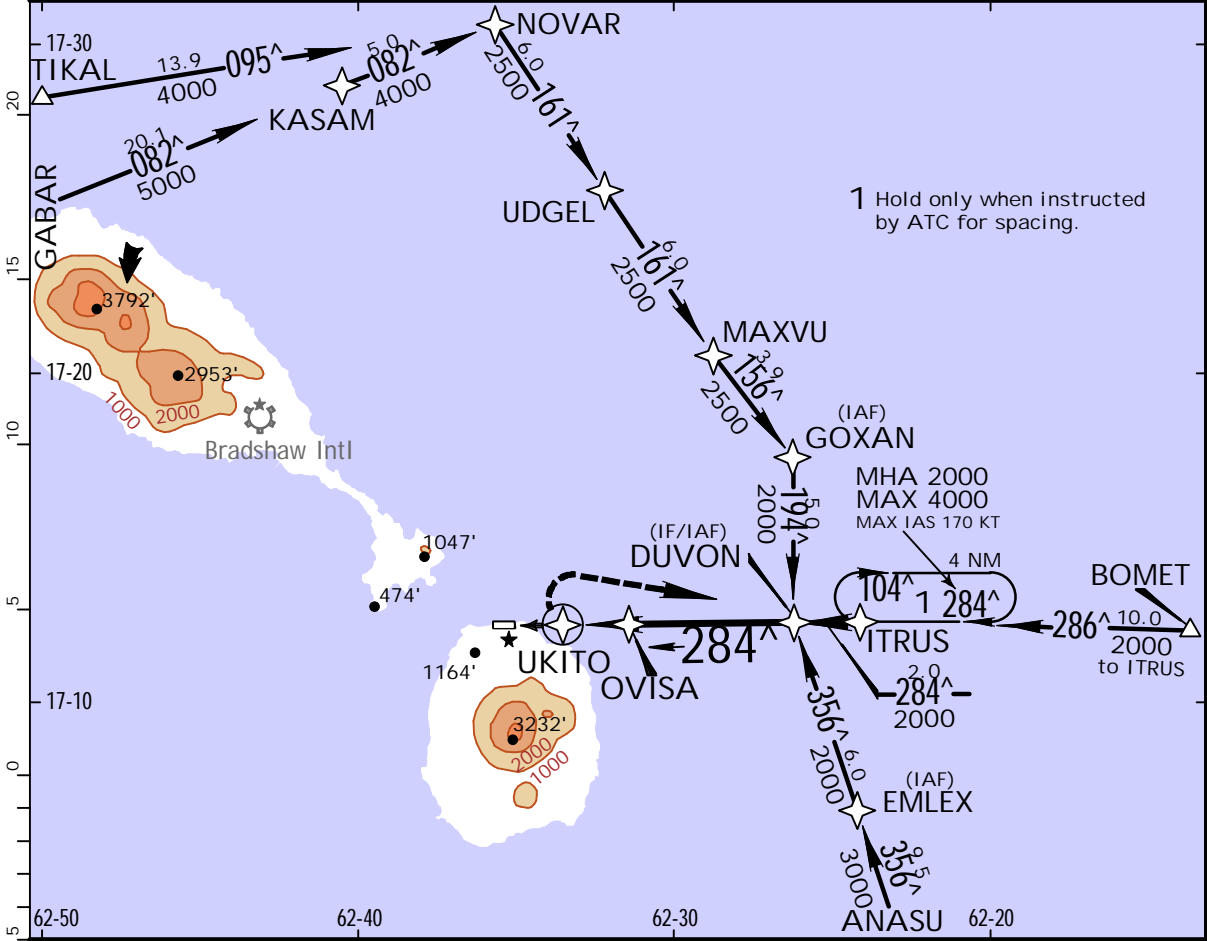
STRAIGHT-IN LANDING RWY 10			CIRCLE-TO-LAND Not Authorized South of Rwy 10/28		
MDA(H) 1160' (1148')			Max Kts		
ALS out			MDA(H)		
A	2000m	100	1160' (1135') -2000m		
B	2400m	135	1160' (1135') -2400m		
C	NA	C	NA		
D		D			

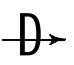
TKPN/NEV
VW AMORY, NEVIS I

JEPPESSEN
 2 AUG 13 (12-2) CAT A & B

CHARLESTOWN, NEVIS I
RNAV (GNSS) Rwy 28

*RL BRADSHAW Approach		*AMORY Tower		*Ground	
119.6		120.5		121.6	
RNAV	Final Apch Crs 284[^]	Minimum Alt OVISA 1200' (1187')	MDA(H) 1100' (1087')	Apt Elev 25' Rwy 28 13'	 <p>4800'</p> <p>MSA ARP</p>
MISSED APCH: Climbing RIGHT turn to 2000' direct ITRUS and hold, or as directed by ATC.					
Alt Set: INCHES Trans level: By ATC Trans alt: 5000'					
1. GNSS required. 2. DME/DME not authorized. 3. Unless ATC clearance is obtained for an RNAV/GNSS procedure, the navigation and position-reporting of all aircraft shall be conducted with reference to conventional ground-based navigation aids.					



Gnd speed-Kts	70	90	100	120	140	160	REIL	2000'		ITRUS
Descent Angle [3.17 [^]]	393	505	561	673	785	897				
MAP at UKITO										

STRAIGHT-IN LANDING RWY 28				CIRCLE-TO-LAND Not Authorized South of Rwy 10/28			
MDA(H) 1100' (1087')							
A	2000m			Max Kts.	MDA(H)		
B	2400m			100	1100' (1075') -2000m		
C	NA			135	1100' (1075') -2400m		
D	NA			C	NA		
	NA			D	NA		

CHANGES: Profile, IATA code added.

Chart changes since cycle 12-2015

ADD = added chart, REV = revised chart, DEL = deleted chart.

ACT	PROCEDURE IDENT	INDEX	REV DATE	EFF DATE
-----	-----------------	-------	----------	----------

NEVIS I., (VANCE WINKWORTH AMORY INTL - TKPN)

TERMINAL CHART CHANGE NOTICES

No Chart Change Notices for Airport TKPN