

List of pages in this Trip Kit

Trip Kit Index

Airport Information For TFFM

Terminal Charts For TFFM

Revision Letter For Cycle 13-2015

Change Notices

Notebook

General Information

Location: GRAND-BOURG GLP
ICAO/IATA: TFFM / GBJ
Lat/Long: N 15 52.1 W 061 16.3
Elevation: 17 ft

Airport Use: Public
Daylight Savings: Not Observed
UTC Conversion: +4:00 = UTC
Magnetic Variation: 15.0° W

Customs: No
Airport Type: IFR
Landing Fee: No
Control Tower: No
Jet Start Unit: No
LLWS Alert: No
Beacon: No
Night VFR Capable

Sunrise: 0936 Z
Sunset: 2240 Z

Runway Information

Runway: 09
Length x Width: 4068 ft x 98 ft
Surface Type: paved
TDZ-Elev: 13 ft
Lighting: Edge

Runway: 27
Length x Width: 4068 ft x 98 ft
Surface Type: paved
TDZ-Elev: 16 ft
Lighting: Edge

Communication Information

Raizet Approach: 121.300
Raizet Approach: 119.500
Marie Galante MULTICOM: 119.300

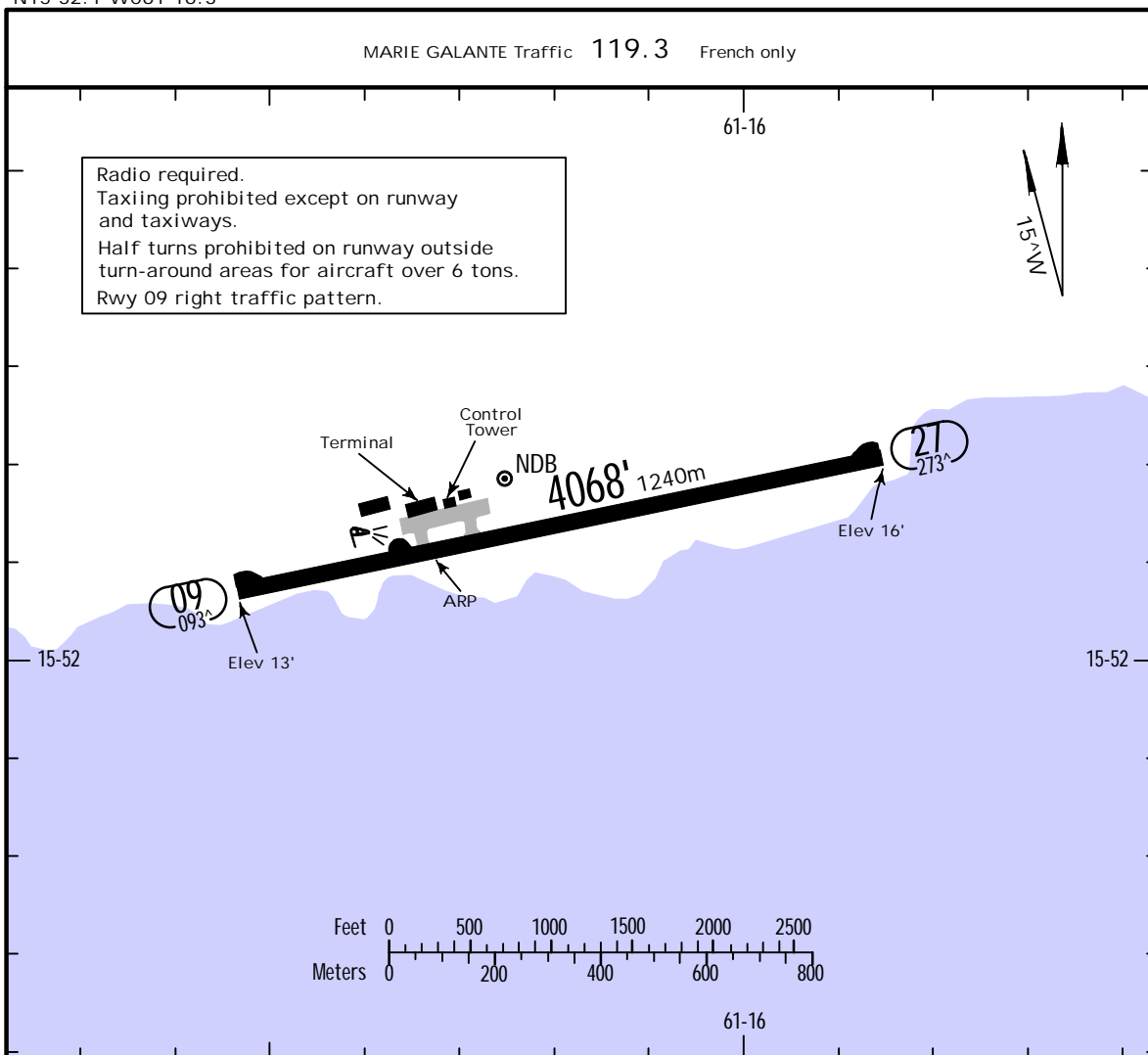
TFFM/GBJ

Apt Elev 17'
N15 52.1 W061 16.3

16 AUG 13 (12-1)

GRAND-BOURG, GUADELOUPE

MARIE GALANTE



ADDITIONAL RUNWAY INFORMATION

RWY	PAPI-L (angle 3.0°, MEHT 16')	USABLE LENGTHS			WIDTH
		Threshold	Glide Slope	TAKE-OFF	
09 27	PAPI-L (angle 3.0°, MEHT 16')				98' 30m

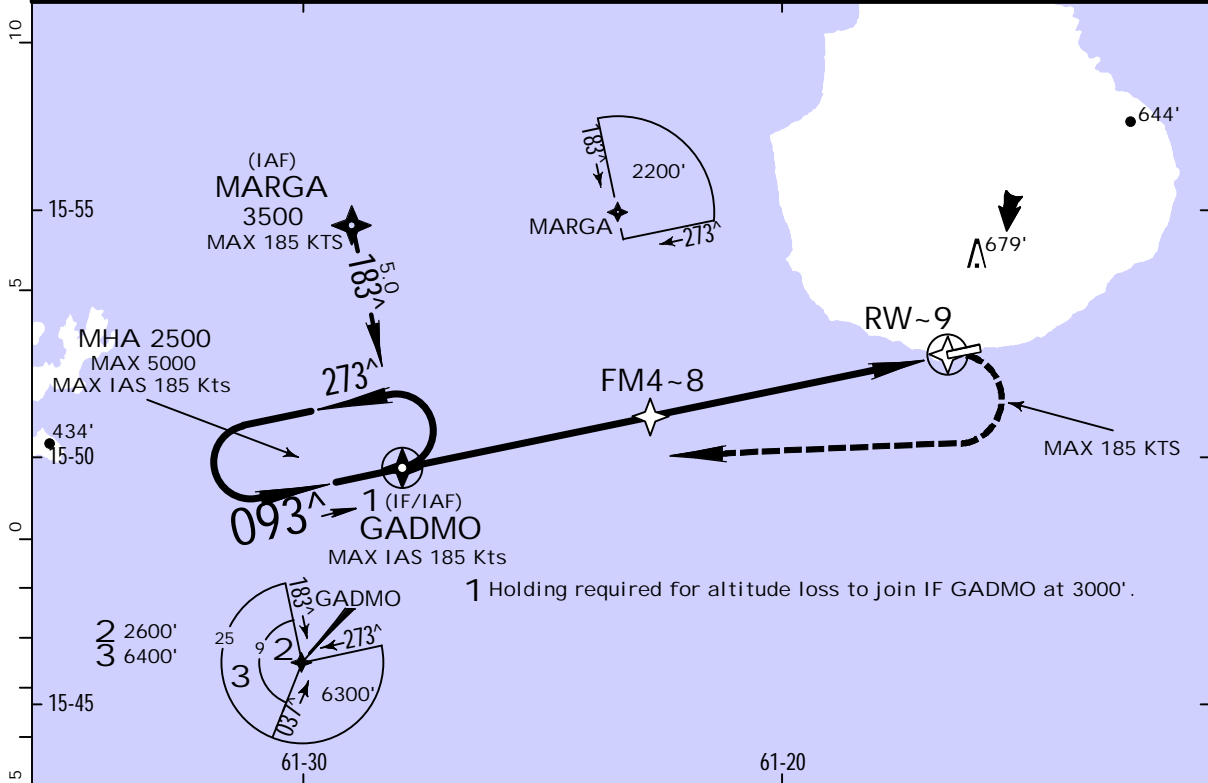
..Standard..	TAKE-OFF	
	All Rwy's	
	NIL (Day only)	
A		
B	500m	
C		
D	NOT APPLICABLE	

TFFM/GBJ
MARIE GALANTE

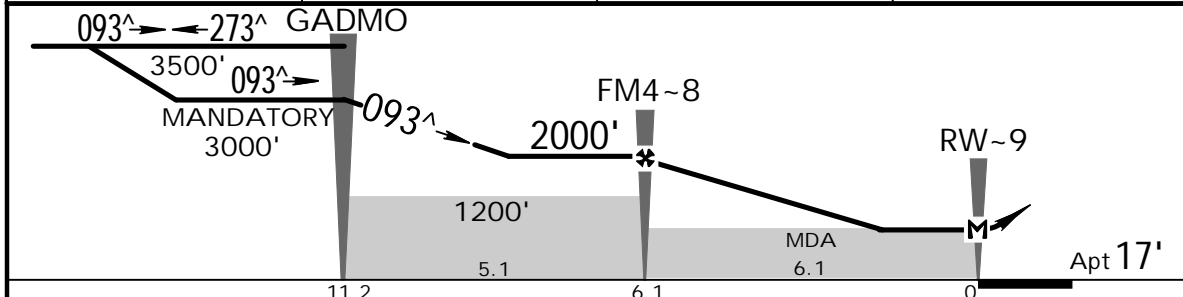
JEPPESEN
16 AUG 13 (12-1)

GRAND-BOURG, GUADELOUPE
CAT A, B & C RNAV (GNSS) A

RAIZET Approach 121.3			MARIE GALANTE Traffic 119.3 French only		
RNAV	Final Apch Crs 093[^]	Procedure Alt FM4-8 2000 (1983)	MDA(H) Refer to Minimums	Apt Elev 17'	
MISSED APCH: Turn RIGHT direct to GADMO climbing up to 3500' then join GADMO holding pattern or proceed according to ATS instructions. Climb to 1400' prior to level acceleration. MAX IAS in missed approach turn 185 KTS.					TAA 25 NM IAF
Alt Set: hPa			Rwy Elev: 1 hPa	Trans level: By ATC	
1. Obtain QNH of TFFR from RAIZET APP 121.3.					



DIST to RW-9	6.0	5.0	4.0
ALTITUDE	1960'	1645'	1330'



					Lighting - Refer to Airport Chart	3500'		GADMO
MAP at RW-9								

PANS OPS

..Standard..		CIRCLE-TO-LAND	
	DAY	NIGHT	
Max Kts	MDA(H)	VIS	
100	1050'(1033')	3300m	
135	1060'(1043')	3300m	
180	1170'(1053')	3300m	
D	NOT APPLICABLE		
NOT APPLICABLE			

Chart changes since cycle 12-2015

ADD = added chart, REV = revised chart, DEL = deleted chart.

ACT	PROCEDURE IDENT	INDEX	REV DATE	EFF DATE
-----	-----------------	-------	----------	----------

GRAND-BOURG, (MARIE GALANTE - TFFM)

TERMINAL CHART CHANGE NOTICES

No Chart Change Notices for Airport TFFM