

List of pages in this Trip Kit

Trip Kit Index

Airport Information For TDPD

Terminal Charts For TDPD

Revision Letter For Cycle 13-2015

Change Notices

Notebook

General Information

Location: ROSEAU DMA
ICAO/IATA: TDPD / DOM
Lat/Long: N 15 32.8 W 061 18.1
Elevation: 72 ft

Airport Use: Public
Daylight Savings: Not Observed
UTC Conversion: +4:00 = UTC
Magnetic Variation: 15.0° W

Fuel Types: Jet A-1
Customs: Yes
Airport Type: IFR
Landing Fee: No
Control Tower: Yes
Jet Start Unit: No
LLWS Alert: No
Beacon: Yes
Night VFR Capable

Sunrise: 0937 Z
Sunset: 2240 Z

Runway Information

Runway: 09
Length x Width: 5761 ft x 148 ft
Surface Type: asphalt
TDZ-Elev: 73 ft
Lighting: Edge
Displaced Threshold: 1158 ft

Runway: 27
Length x Width: 5761 ft x 148 ft
Surface Type: asphalt
TDZ-Elev: 16 ft
Lighting: Edge, ALS

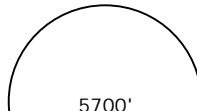
Communication Information

Douglas Charles Intl Tower: 118.900
Martinique Approach: 121.000 Arrival Service
Raizet Approach: 121.300 Arrival Service

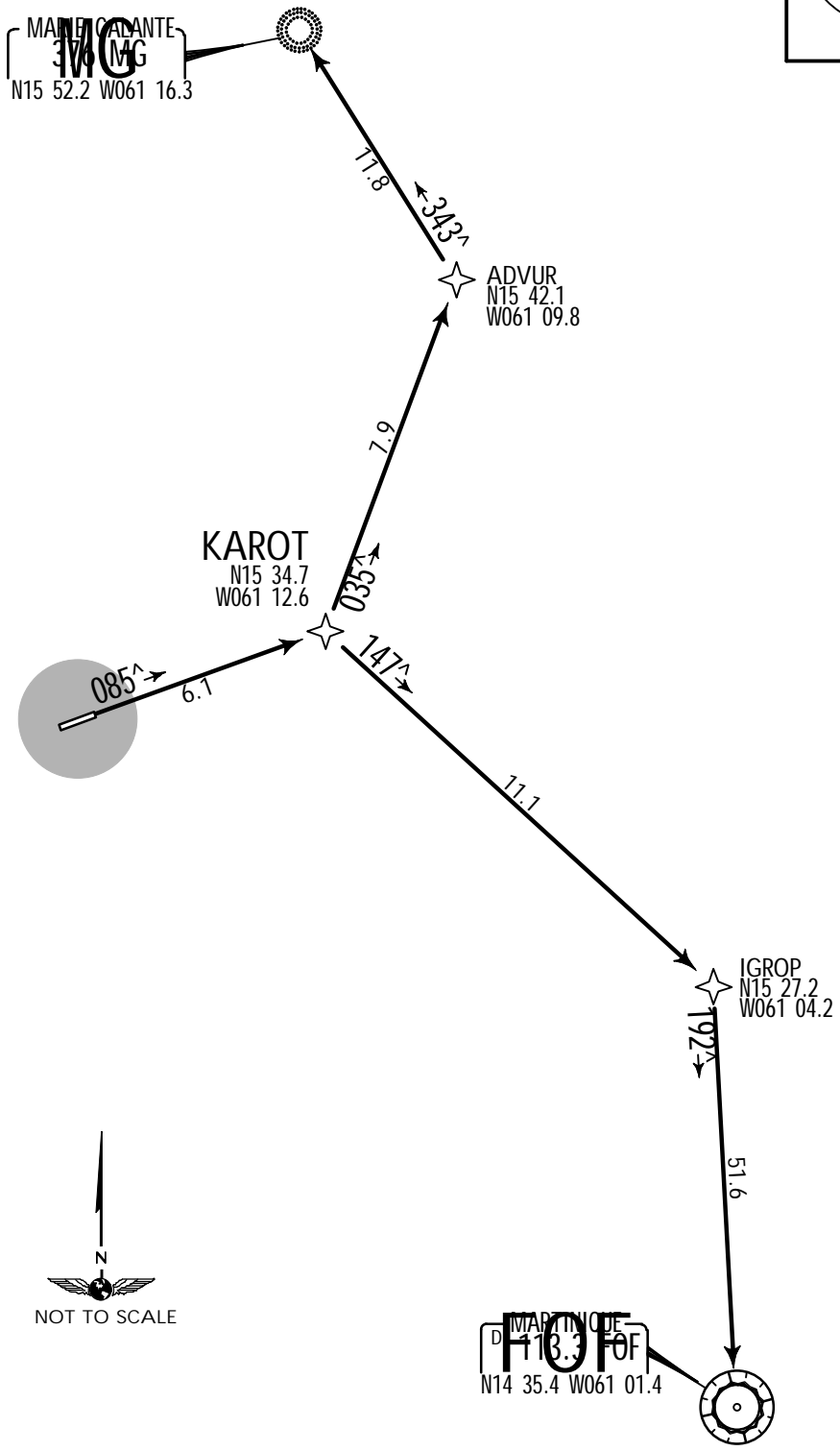
TDPD/DOM
DOUGLAS-CHARLES INTL

JEPPESEN
8 MAY 15 (10-3)

ROSEAU, DOMINICA
.RNAV.SID.

Apt Elev 90'	Trans level: By ATC Trans alt: 9000'	 <p>5700' MSA ARP</p>
-----------------	---	--

KAROT ONE RNAV (GNSS) DEPARTURE [KAROT1]



INITIAL CLIMB

Climb on track 085° to KAROT.

ROUTING

To MG NDB	At KAROT, turn LEFT via track 035° to ADVUR, then turn LEFT via track 343° to MG NDB.
To FOF VOR	At KAROT, turn RIGHT via track 147° to IGROP, then turn RIGHT via track 192° to FOF VOR.

TDPD/DOM

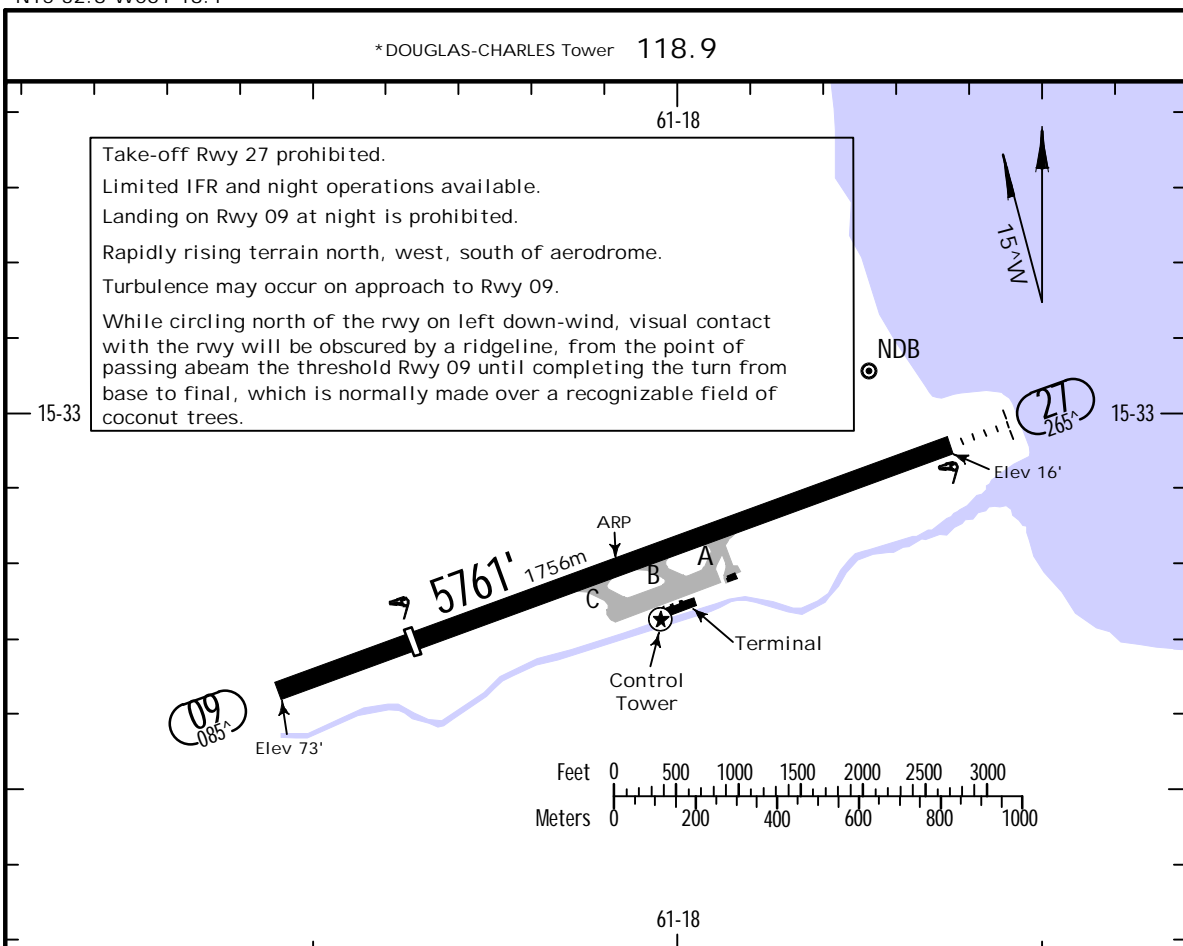
Apt Elev 90'
N15 32.8 W061 18.1

JEPPESEN

8 MAY 15 (10-9)

ROSEAU, DOMINICA

DOUGLAS-CHARLES INTL



ADDITIONAL RUNWAY INFORMATION

RWY		USABLE LENGTHS			WIDTH
		LANDING BEYOND		TAKE-OFF	
		Threshold	Glide Slope		
09	HIRL	4603'	1403m		148'
27	HIRL SALS PAPI (angle 3.00°)			NA	45m

TAKE-OFF

	AIR CARRIER (JAA)		Rwy 27	AIR CARRIER (FAR 121)	
	Rwy 09			Rwy 09	Rwy 27
	LVP must be in Force RCLM (Day only) or RL	RCLM (Day only) or RL		Adequate Vis Ref	
A					
B	250m		NA	2 Eng 400m	NA
C		400m			
D	300m			3 & 4 Eng	

TDPD/DOM

DOUGLAS-CHARLES INTL



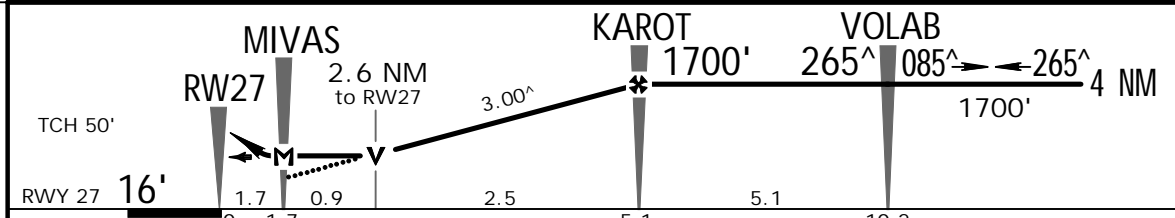
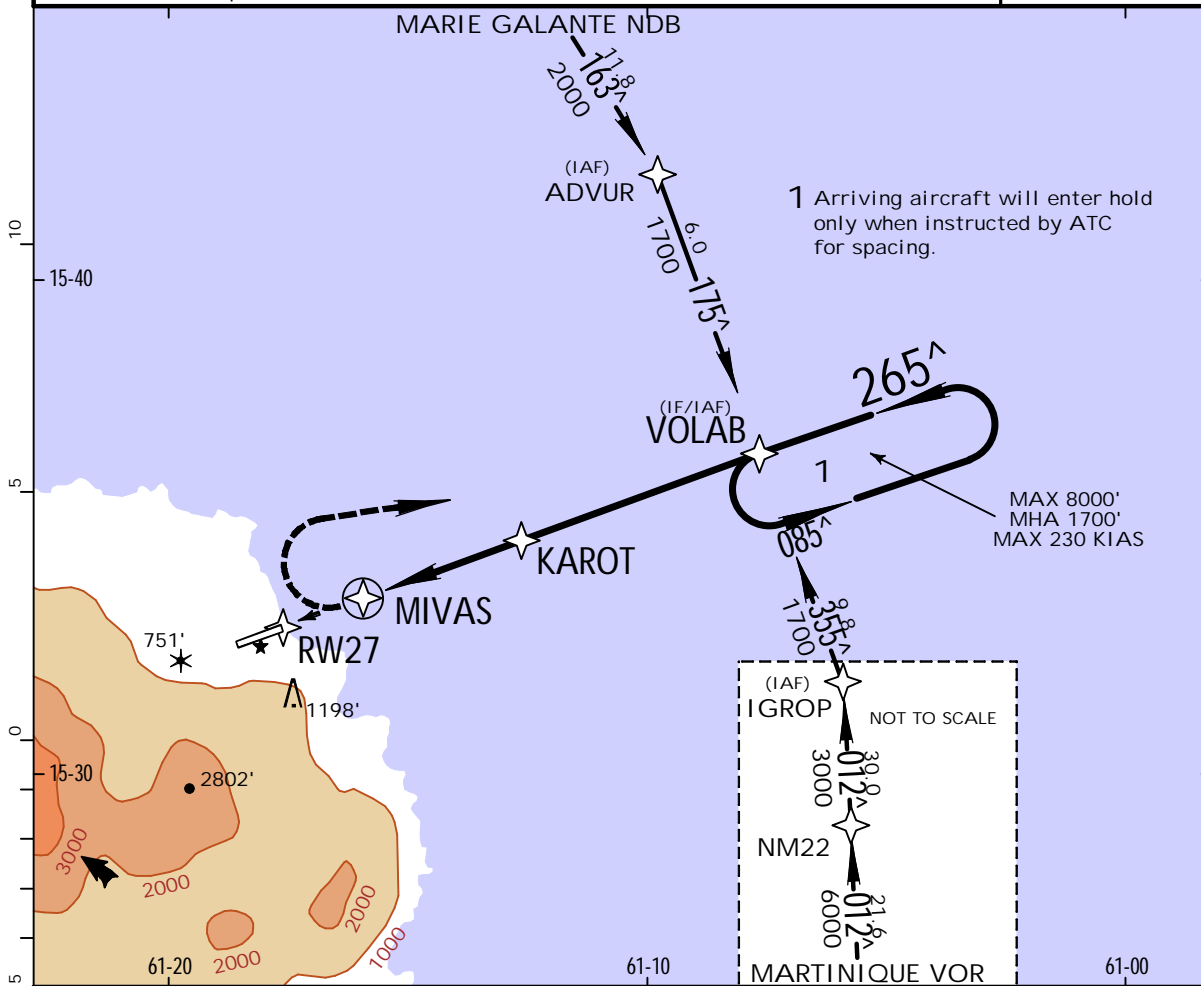
8 MAY 15

(12-1)

CAT A & B

ROSEAU, DOMINICA
RNAV (GNSS) Rwy 27

RAIZET Approach North 121.3		MARTINIQUE Approach South 121.0		*DOUGLAS-CHARLES Tower 118.9	
RNAV	Final Apch Crs 265[^]	Minimum Alt KAROT 1700' (1684')	LNAV MDA(H) 900' (884')	Apt Elev 90' Rwy 27 16'	5700' MSA ARP
MISSED APCH: Climbing RIGHT turn to 1700' direct VOLAB and hold, or as directed by ATC.					
Alt Set: hPa Rwy Elev: 1 hPa Trans level: By ATC Trans alt: 9000' 1. While circling north of the runway on left down-wind Rwy 09, visual contact with the runway will be obscured by a ridge-line, from the point of passing abeam the threshold Rwy 09 until completing the turn from base to final, which is normally made over a recognizable field of coconut trees. 2. As the descent below 3000' is into un-controlled airspace, consult NOTAM.					



Gnd speed-Kts	70	90	100	120	140	160	ALS PAPI PAPI RT	1700'	VOLAB	
Descent angle	3.00 [^]	372	478	531	637	743				849
MAP at MIVAS										

STRAIGHT-IN LANDING RWY 27		CIRCLE-TO-LAND Not Authorized at Night Not Authorized South of Rwy 9/27	
LNAV MDA(H) 900' (884')		Max Kts _____ MDA(H) _____ VIS _____	
ALS out		110	1200' (1110') - 3700m
3100m		135	1600' (1510') - 3700m
NOT APPLICABLE		C	NOT APPLICABLE
NOT APPLICABLE		D	NOT APPLICABLE

PANS OPS

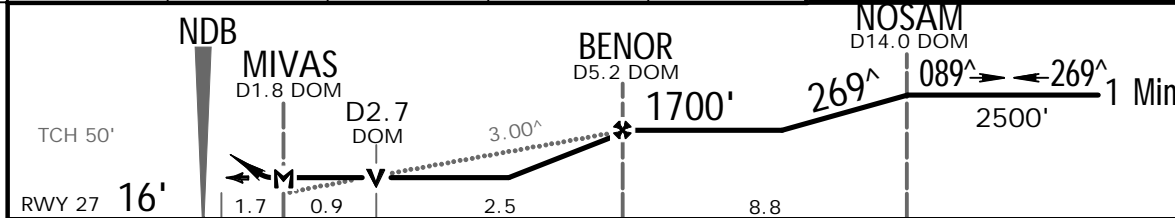
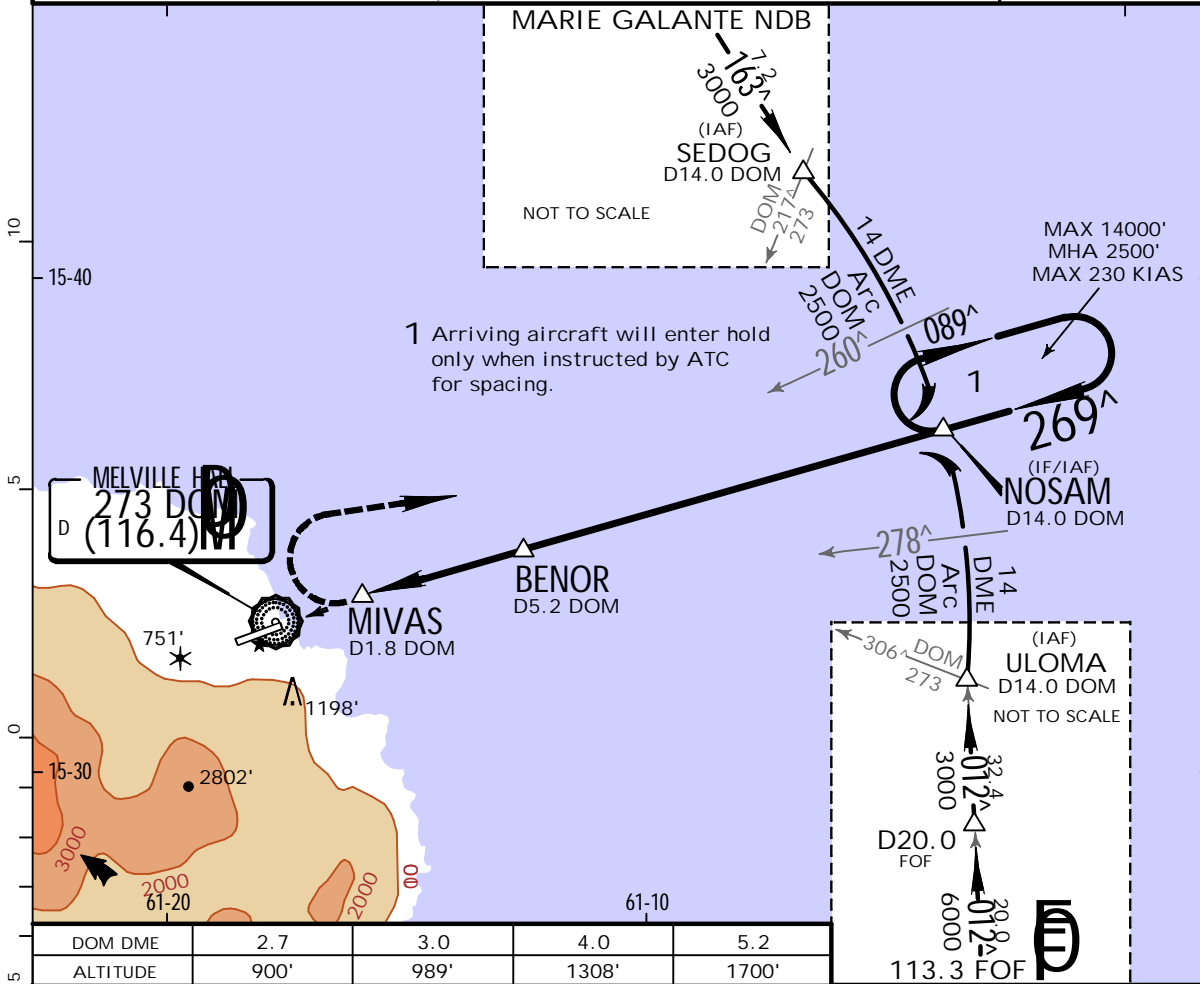
TDPD/DOM

DOUGLAS-CHARLES INTL

JEPESEN
8 MAY 15 (16-1)

ROSEAU, DOMINICA
CAT A & B **NDB Rwy 27**

RAIZET Approach North 121.3		MARTINIQUE Approach South 121.0		*DOUGLAS-CHARLES Tower 118.9	
NDB DOM 273	Final Apch Crs 269 [^]	Minimum Alt BENOR 1700' (1684')	MDA(H) 900' (884')	Apt Elev 90' Rwy 27 16'	5700' MSA ARP
MISSED APCH: Climbing RIGHT turn to 2500' direct NOSAM and hold, or as directed by ATC.					
Alt Set: hPa Rwy Elev: 1 hPa Trans level: By ATC Trans alt: 9000' 1. DME required. 2. While circling north of the runway on left down-wind Rwy 09, visual contact with the runway will be obscured by a ridge-line, from the point of passing abeam the threshold Rwy 09 until completing the turn from base to final, which is normally made over a recognizable field of coconut trees. 3. As the descent below 3000' is into un-controlled airspace, consult NOTAM.					



Gnd speed-Kts	70	90	100	120	140	160	ALS PAPI PAPI ---	2500'	D → NOSAM
Descent angle	3.00 [^]	372	478	531	637	849			
MAP at MIVAS									

STRAIGHT-IN LANDING RWY 27 MDA(H) 900' (884')		CIRCLE-TO-LAND Not Authorized at Night Not Authorized South of Rwy 9-27	
ALS out		Max Kts	MDA(H) VIS
A	3100m	110	1200' (1110') - 3700m
B		135	1600' (1510') - 3700m
C	NOT APPLICABLE	C	NOT APPLICABLE
D		D	NOT APPLICABLE

PANS OPS

Chart changes since cycle 12-2015

ADD = added chart, REV = revised chart, DEL = deleted chart.

ACT	PROCEDURE IDENT	INDEX	REV DATE	EFF DATE
-----	-----------------	-------	----------	----------

ROSEAU, (DOUGLAS CHARLES INTL - TDPD)

TERMINAL CHART CHANGE NOTICES

No Chart Change Notices for Airport TDPD