

List of pages in this Trip Kit

Trip Kit Index

Airport Information For TTPP

Terminal Charts For TTPP

Revision Letter For Cycle 13-2015

Change Notices

Notebook

General Information

Location: PORT OF SPAIN TTO
ICAO/IATA: TTPP / POS
Lat/Long: N 10 35.7 W 061 20.2
Elevation: 58 ft

Airport Use: Public
Daylight Savings: Not Observed
UTC Conversion: +4:00 = UTC
Magnetic Variation: 14.0° W

Fuel Types: 100-130 Octane, Jet A-1
Repair Types: Minor Airframe, Minor Engine
Customs: Yes
Airport Type: IFR
Landing Fee: No
Control Tower: Yes
Jet Start Unit: No
LLWS Alert: No
Beacon: Yes
Night VFR Capable

Sunrise: 0946 Z
Sunset: 2231 Z

Runway Information

Runway: 10
Length x Width: 10495 ft x 148 ft
Surface Type: asphalt
TDZ-Elev: 30 ft
Lighting: Edge, ALS, Centerline, TDZ

Runway: 28
Length x Width: 10495 ft x 148 ft
Surface Type: asphalt
TDZ-Elev: 59 ft
Lighting: Edge

Communication Information

ATIS: 126.700
Piarco Tower: 118.100
Piarco Ground: 121.900

Piarco Apron Ramp/Taxi: 121.750

Piarco Approach: 119.000

Piarco Approach: 119.550

Piarco Radio: 559.800 Remote Communications Air-Ground

Piarco Area Control Center: 123.700 Remote Communications Air-Ground

Piarco Area Control Center: 125.400 Remote Communications Air-Ground

Piarco Radio: 1329.700 Remote Communications Air-Ground

New York Arinc Radio: 1335.400 RCO

Piarco Radio: 1790.700 Remote Communications Air-Ground

New York Arinc Radio: 1795.200 RCO

New York Arinc Radio: 2196.400 RCO

New York Arinc Radio: 296.200 RCO

Piarco Radio: 552.600 Remote Communications Air-Ground

Piarco Radio: 555.000 Remote Communications Air-Ground

Piarco Radio: 657.700 Remote Communications Air-Ground

New York Arinc Radio: 662.800 RCO

Piarco Radio: 882.500 Remote Communications Air-Ground

Piarco Radio: 1138.700 Remote Communications Air-Ground

New York Arinc Radio: 1130.900 RCO

Piarco Radio: 1009.600 Remote Communications Air-Ground

Piarco Radio: 891.800 Remote Communications Air-Ground

Piarco Radio: 885.500 Remote Communications Air-Ground

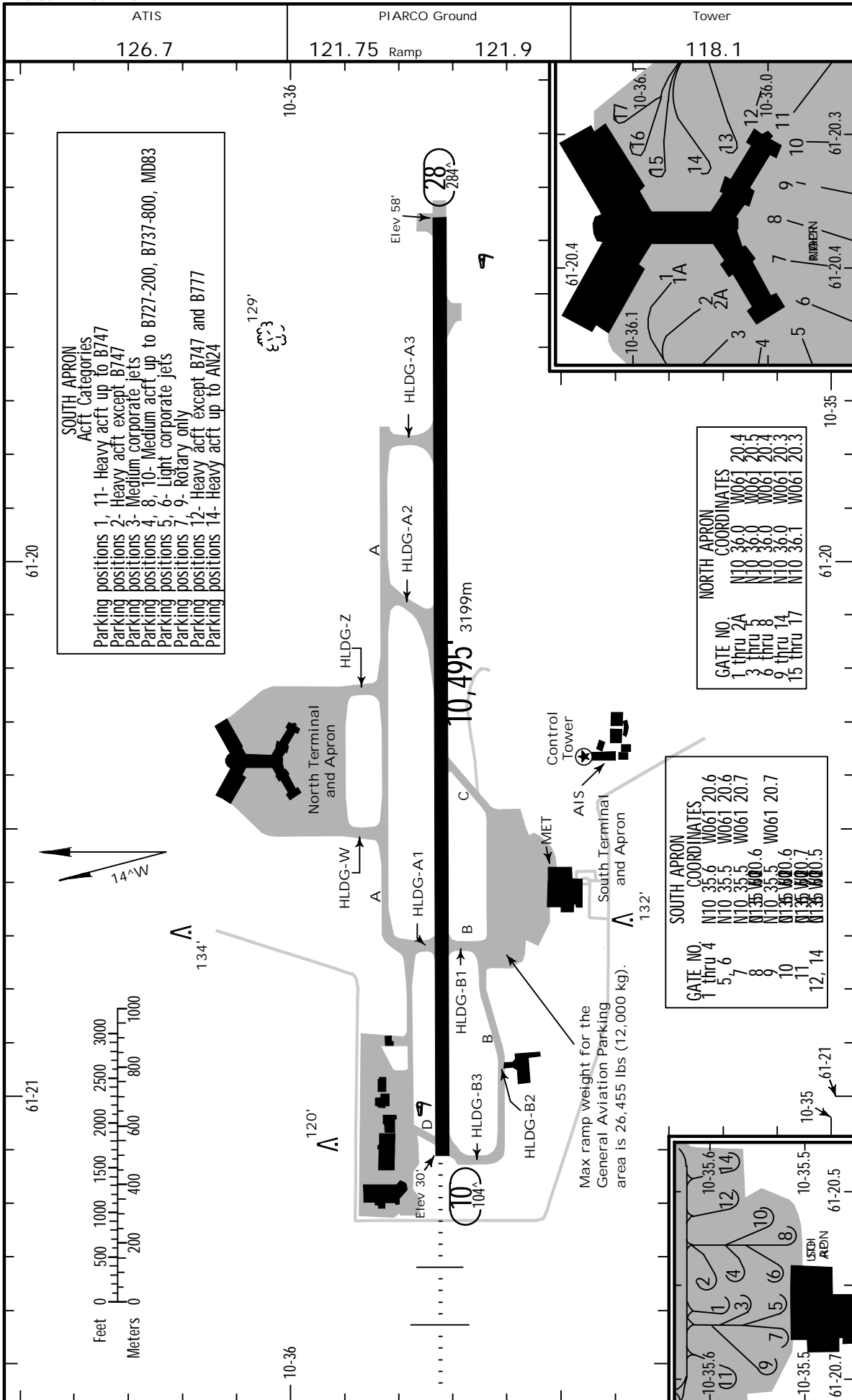
TTPP/POS

Apt Elev 58'
N10 35.7 W061 20.2

JEPPESSEN PORT OF SPAIN, TRINIDAD

25 APR 14 (10-9)

PIARCO INTL



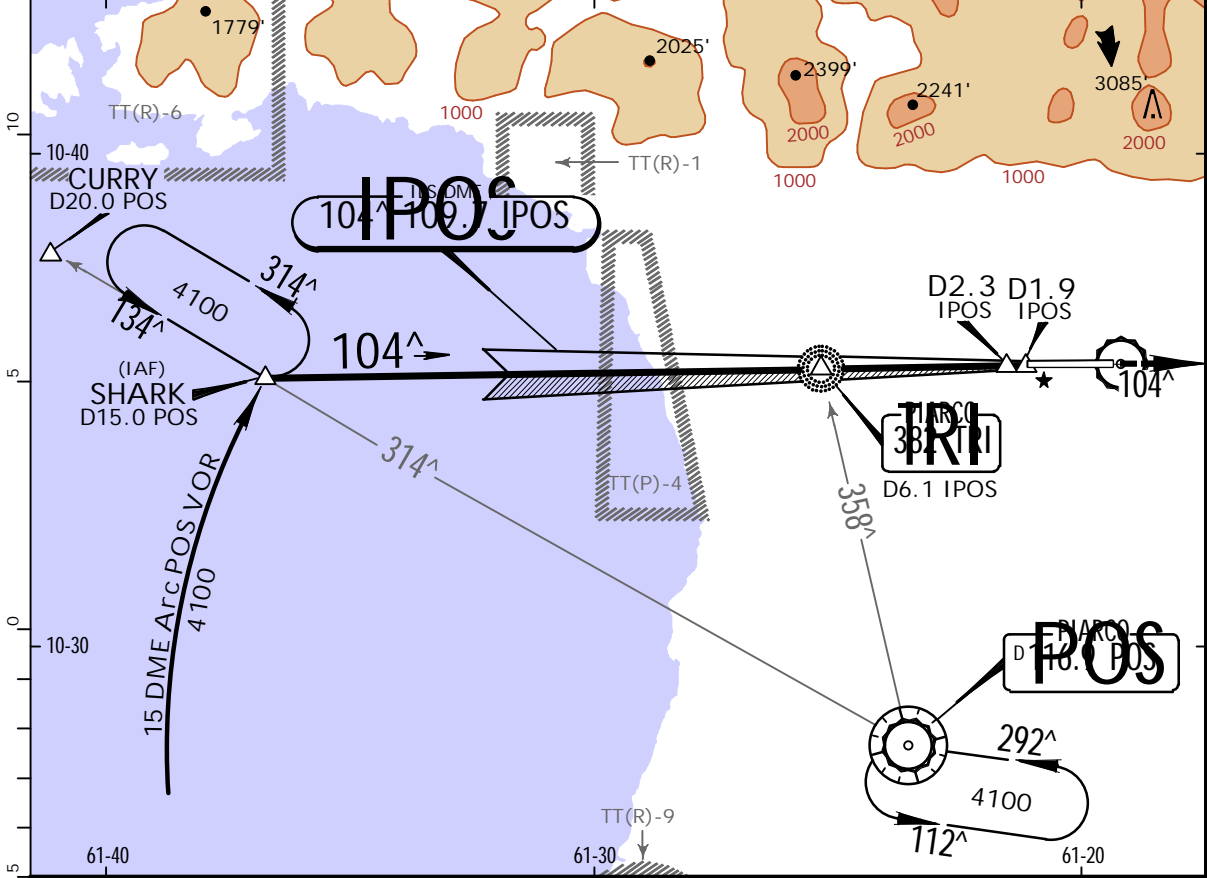
TPPP/POS
PIARCO INTL



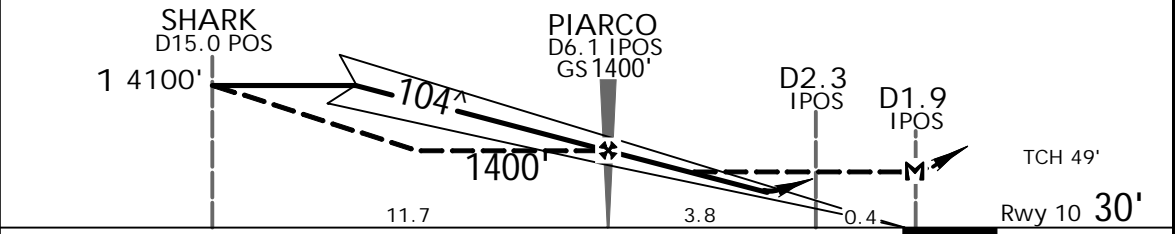
PORT OF SPAIN, TRINIDAD
VOR ILS Rwy 10

1 FEB 13 (11-1)

ATIS 126.7		PIARCO Approach 119.0 119.55		PIARCO Tower 118.1		Ground 121.9	
LOC IPOS 109.7	Final Apch Crs 104 [^]	GS PIARCO 1400' (1370')	ILS DA(H) 265' (235')	Apt Elev 58'	Rwy 10 30'	4100'	
MISSED APCH: Climb on 104 [^] to 2200', then RIGHT climbing turn to 4100' to POS VOR or as directed by ATC.							
Alt Set: hPa		Rwy Elev: 1 hPa		Trans level: FL 55		Trans alt: 4100'	
1. Localizer restricted beyond 12 [^] left of centerline due to rapidly rising terrain.						MSA TRI NDB	



1 Descent below 4100' not authorized until inbound on ILS.



Gnd speed-Kts	70	90	100	120	140	160		2200'	4100'	POS 116.9
GS	3.00 [^]	372	478	531	637	743		849	↑ on 104 [^] then	RT
MAP at D1.9 IPOS or PIARCO to MAP	4.2	3:36	2:48	2:31	2:06	1:48		1:34		

STRAIGHT-IN LANDING RWY 10			
ILS DA(H) 265' (235')		LOC (GS out) MDA(H) 530' (500')	
FULL		ALS out	
A			
B			
C	800m	1200m	
D			

PANS OPS

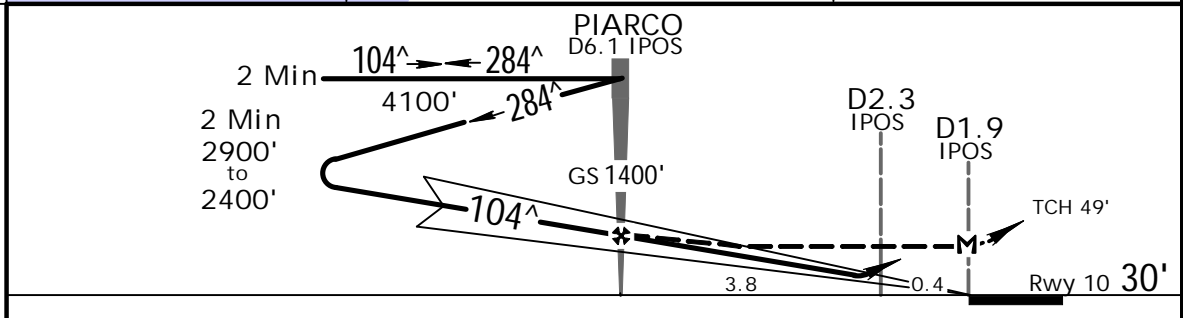
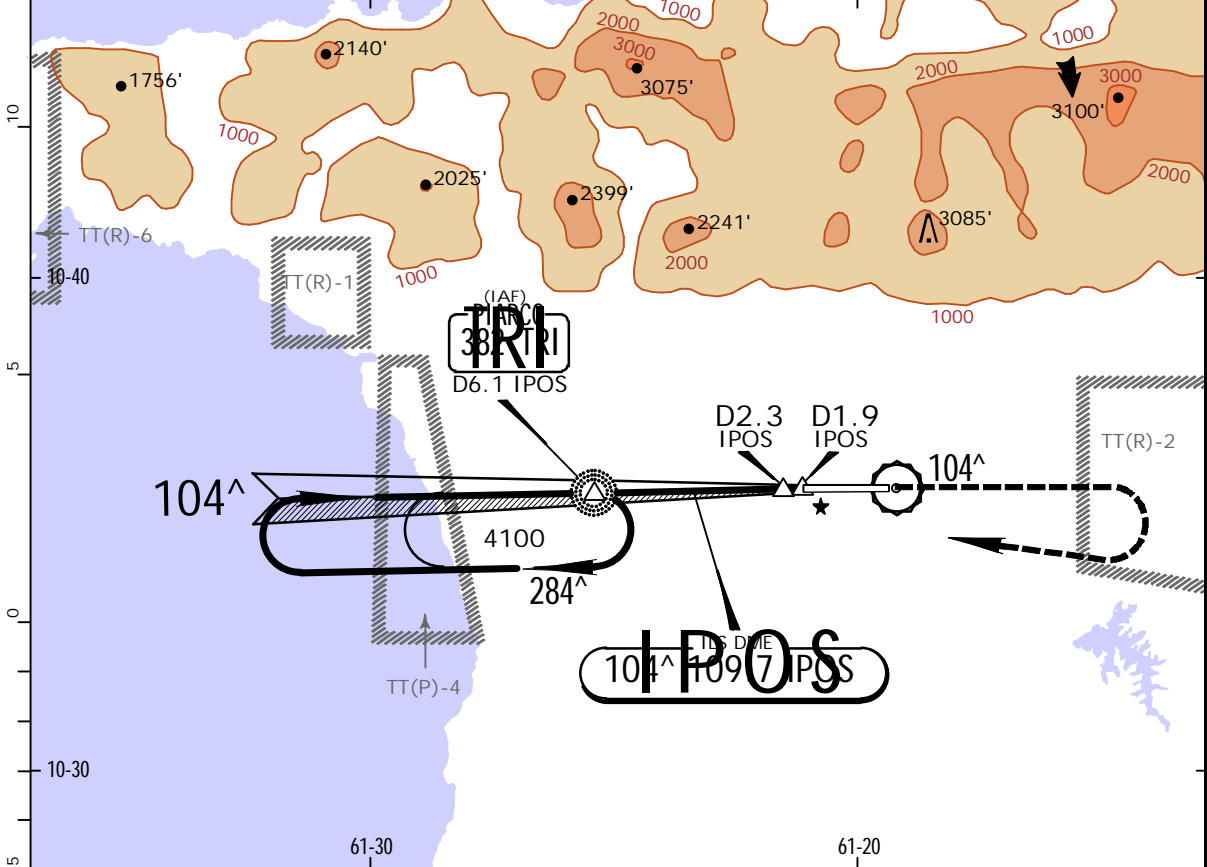
CHANGES: Approach frequency added.

TPPP/POS
PIARCO INTL

JEPPESSEN PORT OF SPAIN, TRINIDAD
NDB ILS Rwy 10

1 FEB 13 (11-2)

ATIS 126.7		PIARCO Approach 119.0 119.55		PIARCO Tower 118.1		Ground 121.9	
LOC IPOS 109.7	Final Apch Crs 104 [^]	GS PIARCO 1400' (1370')		ILS DA(H) 265' (235')	Apt Elev 58' Rwy 10 30'	4100'	
MISSED APCH: Climb to 4100' on 104 [^] , RIGHT turn to TRI NDB or as directed by ATC.							
Alt Set: hPa		Rwy Elev: 1 hPa		Trans level: FL 55		Trans alt: 4100'	
1. Localizer restricted beyond 12 [^] left of centerline due to rapidly rising terrain.						MSA TRI NDB	



Gnd speed-Kts	70	90	100	120	140	160	HIALS PAPI 4100' on 104 [^] RT TRI 382	
GS	3.00 [^]	372	478	531	637	743		849
MAP at D1.9 IPOS or PIARCO to MAP	4.2	3:36	2:48	2:31	2:06	1:48		1:34

STRAIGHT-IN LANDING RWY 10			
ILS DA(H) 265' (235')		LOC (GS out) MDA(H) 530' (500')	
FULL		ALS out	
A		800m	1600m
B	800m	1200m	1600m
C		1200m	2000m
D		1600m	2400m

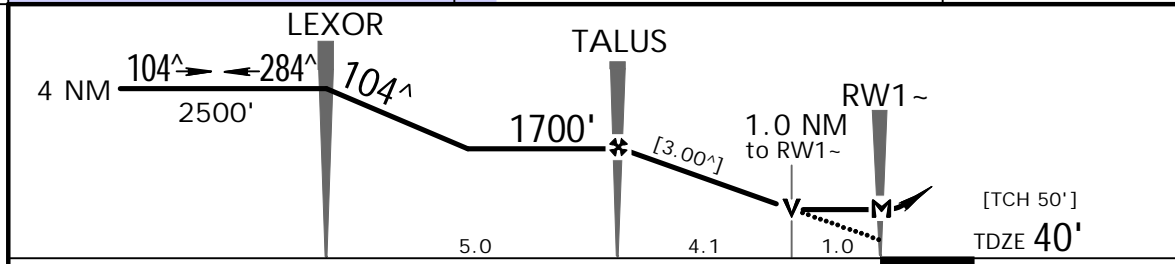
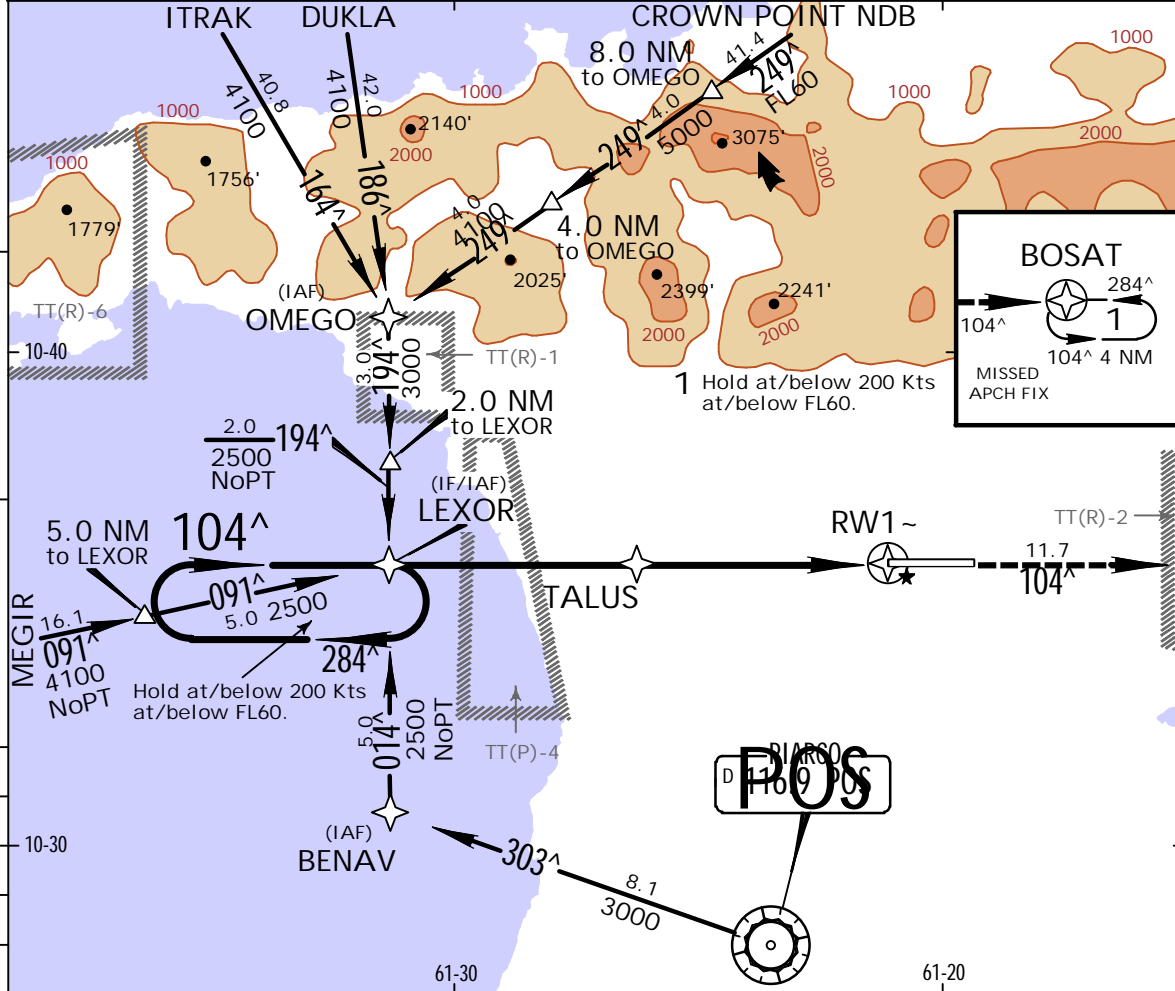
PANS OPS

TPPP/POS
PIARCO INTL

JEPPESSEN 1 FEB 13 (12-1)

PORT OF SPAIN, TRINIDAD
RNAV (GPS) Rwy 10

ATIS 126.7		PIARCO Approach 119.0 119.55		PIARCO Tower 118.1	Ground 121.9
RNAV	Final Apch Crs 104[^]	Minimum Alt TALUS 1700' (1660')	LNAV MDA(H) 450' (410')	Apt Elev 58'	4100'
MISSED APCH: Climb to 2500' direct BOSAT and hold, or as directed by ATC.					
Alt Set: hPa TDZ Elev: 2 hPa Trans level: FL 55 Trans alt: 4100'					MSA RW1~
1. GPS required. 2. POS ILS/VOR/DME/TRI NDB not required.					



Gnd speed-Kts	70	90	100	120	140	160	HIALS 2500'	PAPI	BOSAT
Descent Angle [3.00 [^]]	372	478	531	637	743	849			
MAP at RW1~									

STRAIGHT-IN LANDING RWY 10		CIRCLE-TO-LAND
LNAV MDA(H) 450' (410')		
ALS out		

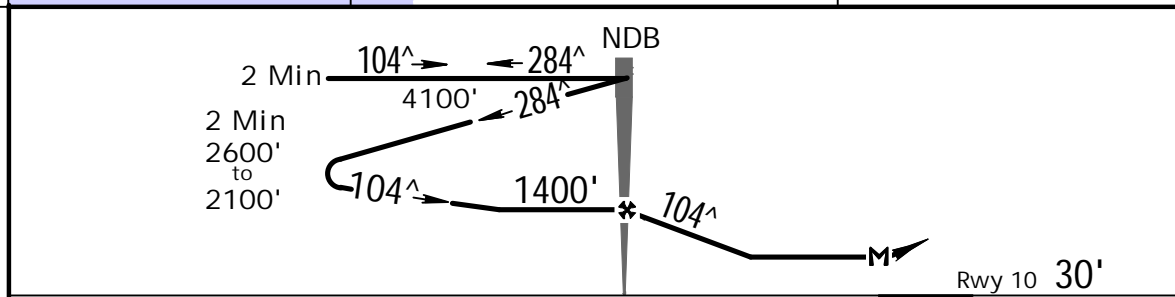
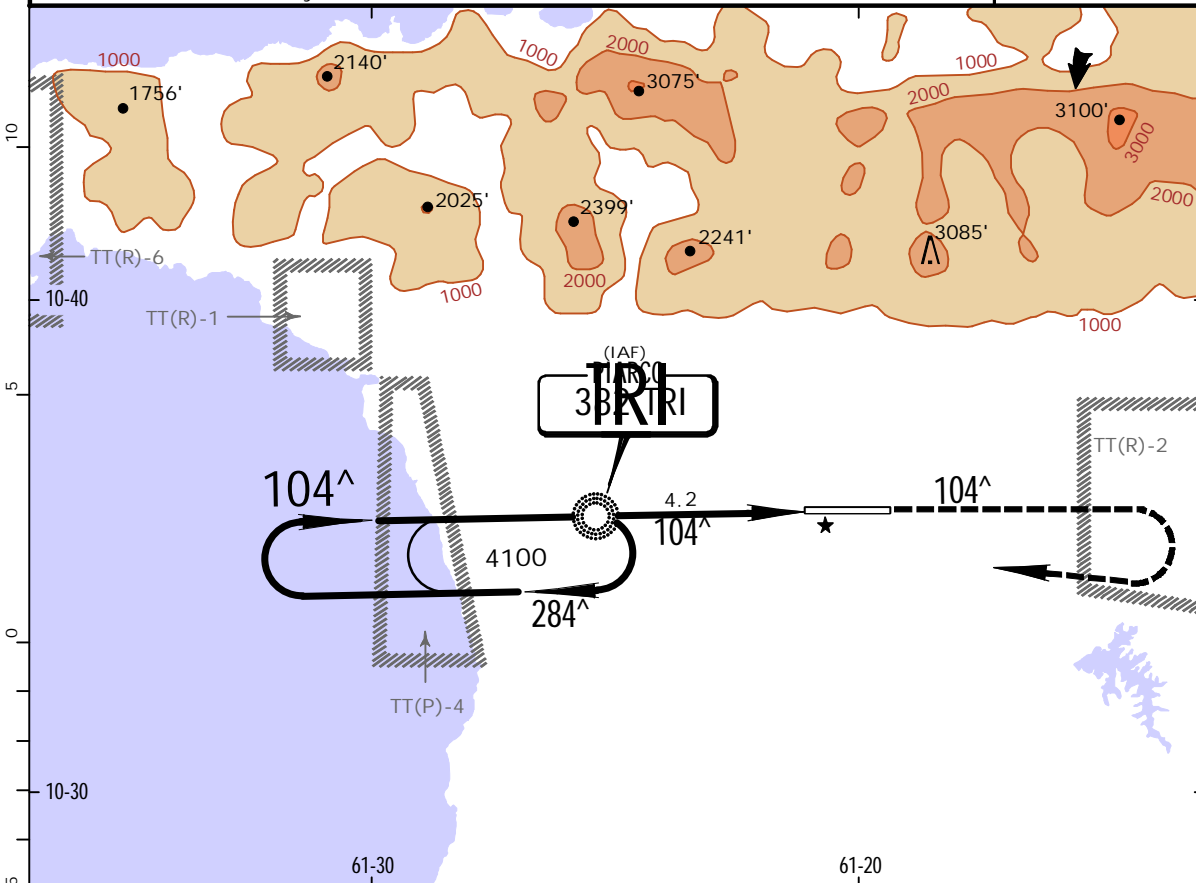
PANS OPS	A		
	B	1600m	NA
	C		
	D	2000m	

TTPP/POS
PIARCO INTL

JEPESEN PORT OF SPAIN, TRINIDAD
NDB Rwy 10

1 FEB 13 (16-1)

ATIS 126.7		PIARCO Approach 119.0 119.55		PIARCO Tower 118.1		Ground 121.9	
BRIEFING STRIP	NDB TRI 382	Final Apch Crs 104[^]	Minimum Alt NDB 1400' (1370')	MDA(H) 530' (500')	Apt Elev 58' Rwy 10 30'	4100'	
	MISSED APCH: Climb to 4100' on 104 [^] , RIGHT turn to TRI NDB or as directed by ATC.						
Alt Set: hPa		Rwy Elev: 1 hPa		Trans level: FL 55		Trans alt: 4100'	
						MSA TRI NDB	



Gnd speed-Kts	70	90	100	120	140	160	HIALS PAPI	4100' on 104 [^]	RT	TRI 382
NDB to MAP	4.2	3:36	2:48	2:31	2:06	1:34				

STRAIGHT-IN LANDING RWY10		CIRCLE-TO-LAND	
MDA(H) 530' (500')			
ALS out			
A			
B	1200m	1600m	
C		2000m	
D	2000m	2400m	
		NOT APPLICABLE	

PANS OPS

Chart changes since cycle 12-2015

ADD = added chart, REV = revised chart, DEL = deleted chart.

ACT PROCEDURE IDENT

INDEX

REV DATE

EFF DATE

PORT OF SPAIN, (PIARCO INTL - TTPP)

TERMINAL CHART CHANGE NOTICES

No Chart Change Notices for Airport TTPP