

## List of pages in this Trip Kit

Trip Kit Index

Airport Information For TLPL

Terminal Charts For TLPL

Revision Letter For Cycle 13-2015

Change Notices

Notebook

## General Information

Location: VIEUXFORT LCA  
ICAO/IATA: TLPL / UVF  
Lat/Long: N 13 44.0 W 060 57.3  
Elevation: 14 ft

Airport Use: Public  
Daylight Savings: Not Observed  
UTC Conversion: +4:00 = UTC  
Magnetic Variation: 15.0° W

Fuel Types: Jet A-1  
Customs: Yes  
Airport Type: IFR  
Landing Fee: No  
Control Tower: Yes  
Jet Start Unit: No  
LLWS Alert: No  
Beacon: Yes  
Night VFR Capable

Sunrise: 0939 Z  
Sunset: 2235 Z

## Runway Information

Runway: 10  
Length x Width: 9003 ft x 151 ft  
Surface Type: asphalt  
TDZ-Elev: 11 ft  
Lighting: Edge, ALS

Runway: 28  
Length x Width: 9003 ft x 151 ft  
Surface Type: asphalt  
TDZ-Elev: 10 ft  
Lighting: Edge  
Displaced Threshold: 492 ft  
Stopway: 200 ft

## Communication Information

Hewanorra Tower: 118.300  
Hewanorra Ground: 121.600

St Lucia Approach: 119.800

TLPL/UVF

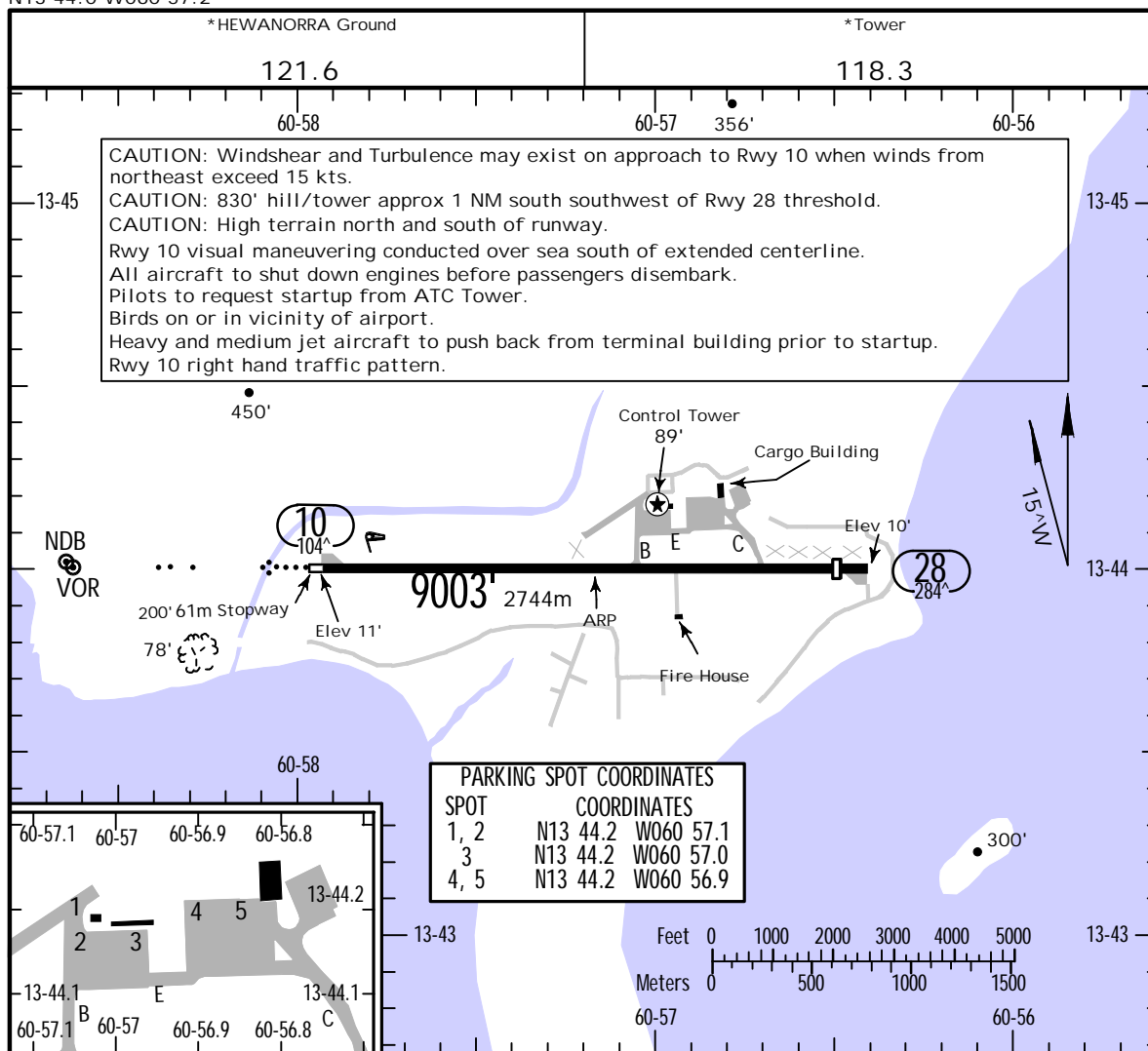
Apt Elev 14  
N13 44.0 W060 57.2

JEPPESEN

12 OCT 12 (10-9)

VIEUX FORT, ST LUCIA

HEWANORRA INTL



RWY	ADDITIONAL RUNWAY INFORMATION				
	HIRL ALS PAPI-L (3.00^)	USABLE LENGTHS		TAKE-OFF	WIDTH
		Threshold	LANDING BEYOND		
10		1 8888' 2709m		1 8888' 2709m	151'
28	HIRL PAPI-L (3.00^)	8511' 2594m			46m

1 Last 115' (35m) of Rwy 10 not available for landing or takeoff.

TAKE-OFF & DEPARTURE PROCEDURE				
	AIR CARRIER (JAA)		AIR CARRIER (FAR 121)	
	LVP must be in force All Rwys RCLM (Day only) or RL	All Rwys RCLM (Day only) or RL	All Rwys Adequate Vis Ref	
A			2 Eng	400m
B	250m	400m	3 & 4 Eng	
C				
D	300m			

DEPARTURE PROCEDURE: For aircraft making a left turn after take-off Rwy 10: Climb on rwy heading until reaching 4200' then left turn; or, for aircraft making a right turn after take-off Rwy 10: climb on rwy heading until reaching 2000' then right turn.

TLPL/UVF

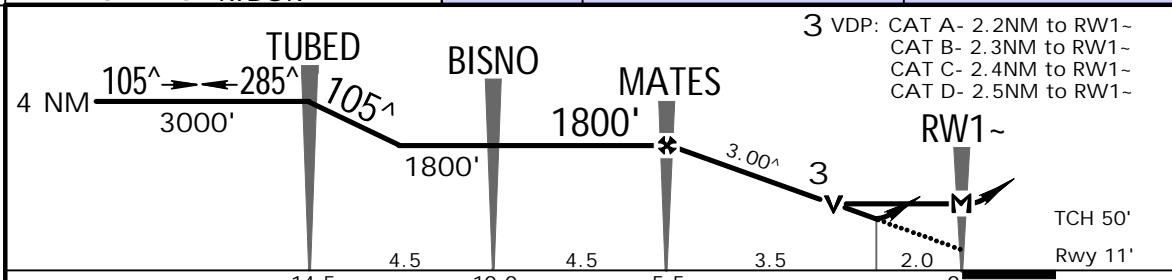
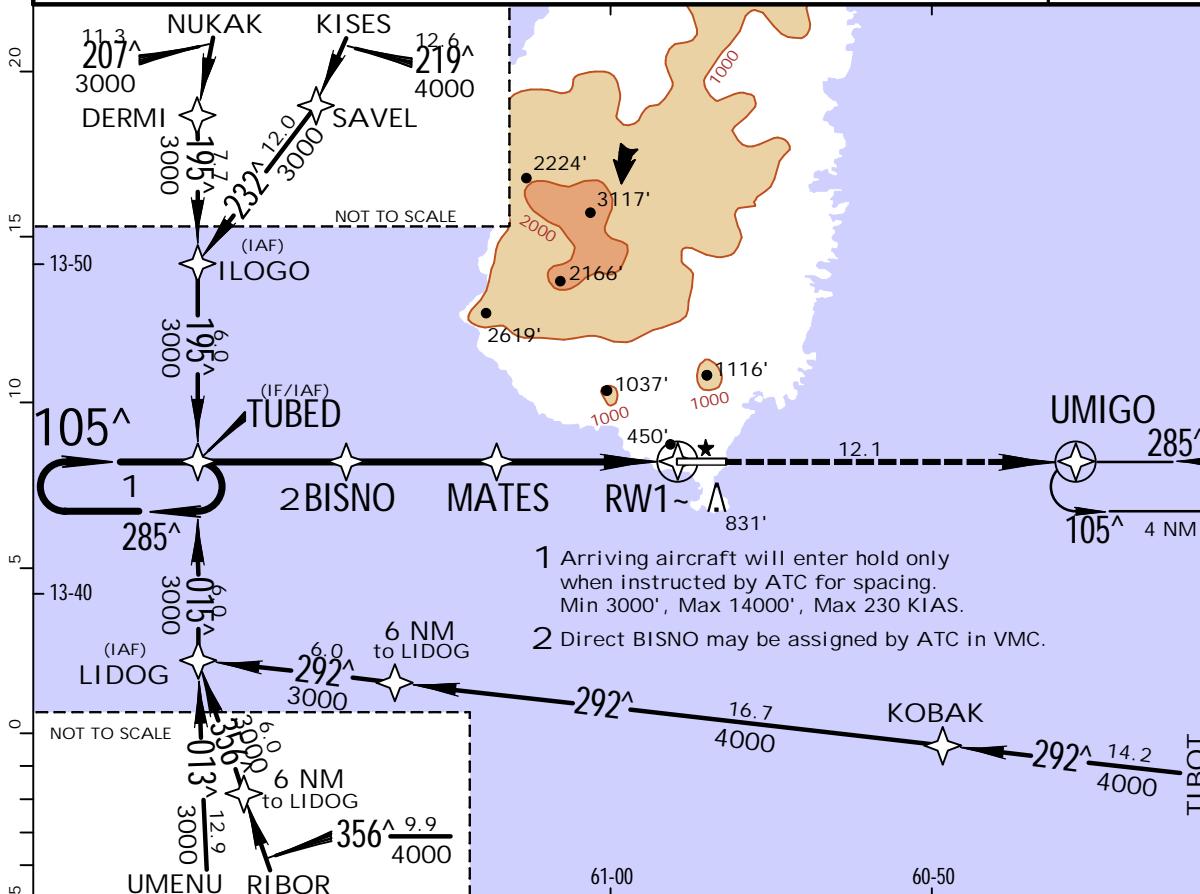


VIEUX FORT, ST LUCIA  
RNAV (GNSS) Rwy 10

HEWANORRA INTL

19 JUN 15 (12-1)

*ST LUCIA Approach 119.8		*HEWANORRA Tower 118.3		*Ground 121.6	
RNAV	Final Apch Crs 105 <sup>^</sup>	Minimum Alt MATES 1800' (1789')	LNAV/VNAV DA(H) 690' (679')	Apt Elev 14'	Rwy 11'
MISSED APCH: Climb to 2500' direct UMIGO and hold, or as directed by ATC.					
Alt Set: hPa (IN on req) Rwy Elev: 0 hPa Trans level: By ATC Trans alt: 9000'					
1. Unless ATC clearance is obtained for an RNAV (GNSS) procedure, the navigation and position reporting of all aircraft shall be conducted with reference to conventional ground-based navigation aids.					



Gnd Speed-Kts	70	90	100	120	140	160	ALS PAPI	2500'	UMIGO
Descent angle	3.00 <sup>^</sup>	372	478	531	637	849			
MAP at RW1-									

LNAV/VNAV DA(H) 690' (679')		STRAIGHT-IN LANDING RWY 10 LNAV MDA(H) A: 770' (759') C: 820' (809') B: 800' (789') D: 850' (839')		CIRCLE-TO-LAND Not Authorized North of Rwy 10/28	
ALS out		ALS out		Max Kts	MDA(H)
A	3700m			100	1130' (1116') -2000m
B				135	1130' (1116') -2400m
C				180	1230' (1216') -4800m
D				205	

# TLPL/UVF

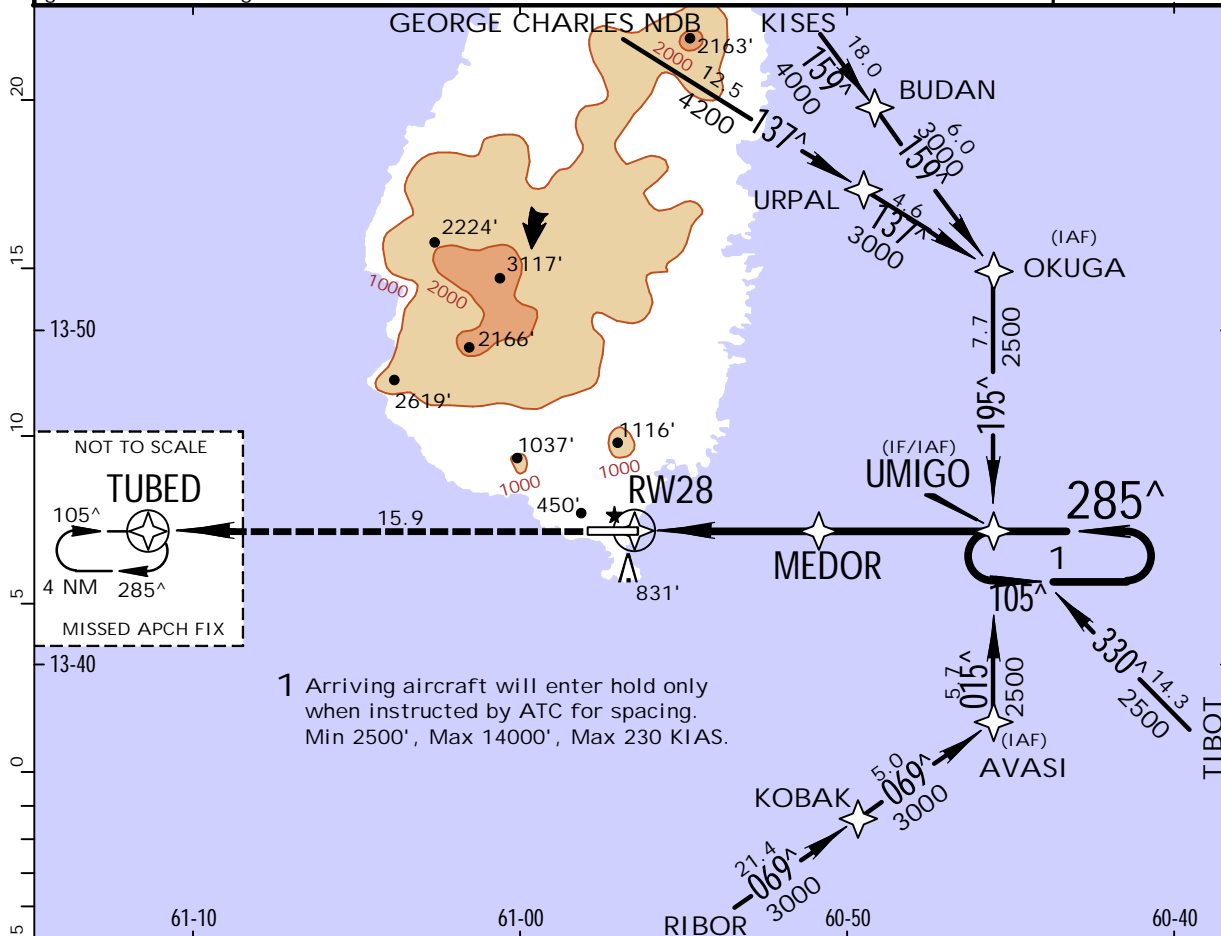


# VIEUX FORT, ST LUCIA RNAV (GNSS) Rwy 28

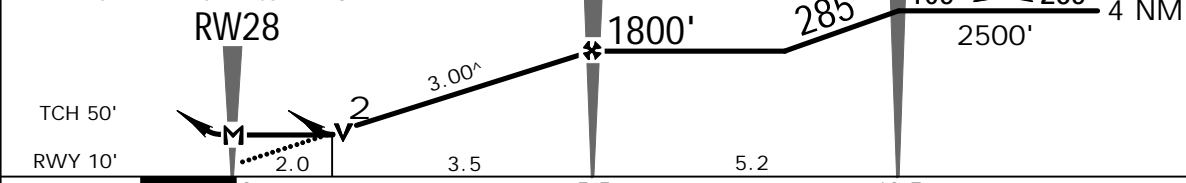
HEWANORRA INTL

19 JUN 15 (12-2)

*ST LUCIA Approach 119.8		*HEWANORRA Tower 118.3		*Ground 121.6	
RNAV	Final Apch Crs 285 <sup>^</sup>	Minimum Alt MEDOR 1800' (1790')	LNAV/VNAV DA(H) 700' (690')	Apt Elev 14'	Rwy 10'
MISSED APCH: Climb to 3000' direct TUBED and hold, or as directed by ATC.					
Alt Set: hPa (IN on req) Rwy Elev: 0 hPa Trans level: by ATC Trans alt: 9000'					
1. Unless ATC clearance is obtained for an RNAV (GNSS) procedure, the navigation and position reporting of all aircraft shall be conducted with reference to conventional ground-based navigation aids.					



2 VDP: CAT A- 2.2NM to RW28  
CAT B- 2.3NM to RW28  
CAT C- 2.4NM to RW28  
CAT D- 2.5NM to RW28



Gnd speed-Kts	70	90	100	120	140	160	PAPI-L	3000'	D	TUBED
Descent angle	3.00 <sup>^</sup>	372	478	531	637	849				
MAP at RW28										

STRAIGHT-IN LANDING RWY 28		CIRCLE-TO-LAND	
LNAV/VNAV	LNAV	Not Authorized North of Rwy 10/28	
DA(H) 700' (690')	MDA(H) A, B, C: 700' (690') D: 710' (700')	Max Kts	MDA(H)
A B C D	4000m	100	1130' (1116') -2000m
		135	1130' (1116') -2400m
		180	1230' (1216') -4800m
		205	

PANS OPS 4

TLPL/UVF

JEPPESEN

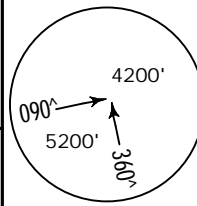
VIEUX FORT, ST LUCIA  
 VOR DME Rwy 10  
 VOR Rwy 10

HEWANORRA INTL

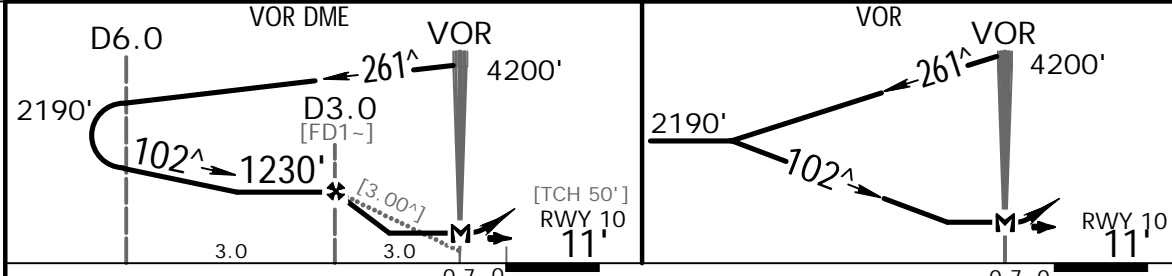
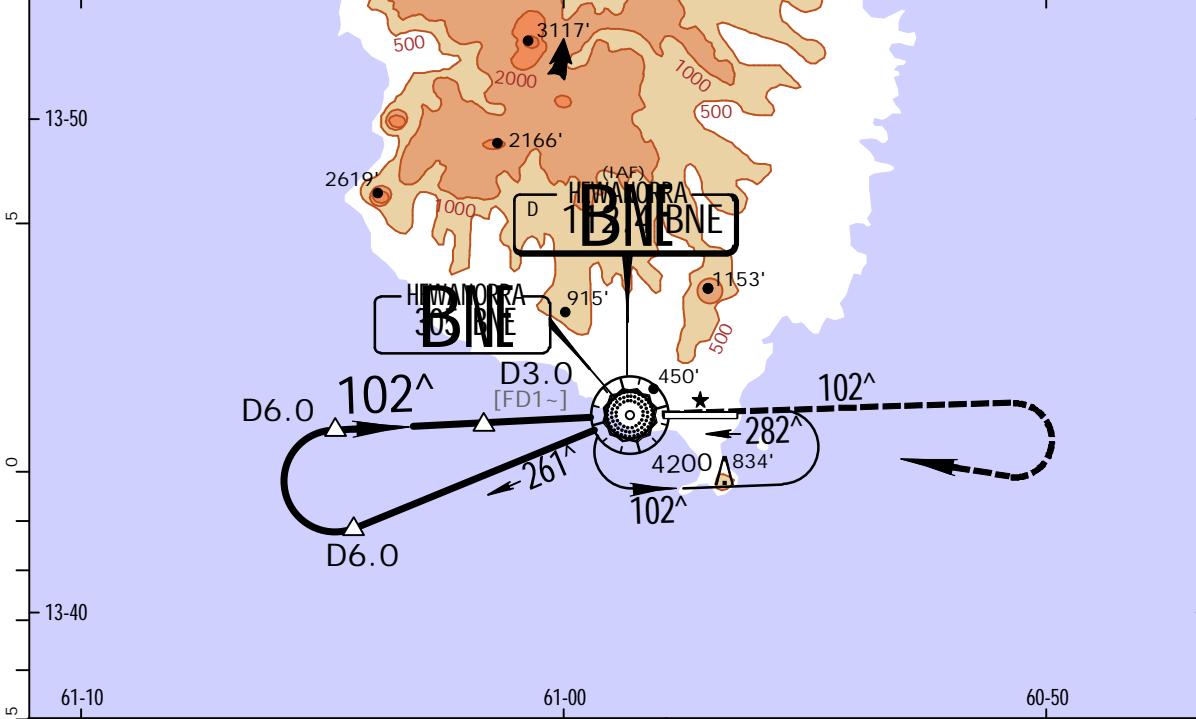
3 SEP 10 (13-1)

BRIEFING STRIP™

*ST LUCIA Approach 119.8		*HEWANORRA Tower 118.3		*Ground 121.6	
VOR BNE 112.4	Final Apch Crs 102 <sup>^</sup>	VOR DME Minimum Alt D3.0 1230' (1219')	VOR DME MDA(H) 730' (719')	Apt Elev 14'	
		VOR No FAF	VOR MDA(H) 790' (779')	Rwy 10 11'	
MISSED APCH: Climb outbound on BNE VOR R-102 to 4200', RIGHT turn to BNE VOR and hold, or as directed by ATC .					
Alt Set: hPa (IN on req) Rwy Elev: 0 hPa Trans level: By ATC Trans alt: 9000' 1. CAUTION: Aircraft not to descend below 5200' when approaching from southwest until within 15 NM from BNE VOR. 2. CAUTION: High terrain north and south of airport. 3. Windshear and turbulence on final approach Rwy 10 when wind from northeast is 15 kts or greater.					



MSA BNE NDB



Gnd Speed-Kts	70	90	100	120	140	160	ALS 4200'	BNE 112.4 R-102	RT BNE 112.4
Descent angle [3.00 <sup>^</sup> ]	372	478	531	637	743	849			
MAP at VOR									

	STRAIGHT-IN LANDING RWY10				Max Kts	CIRCLE-TO-LAND
	VOR DME MDA(H) 730' (719')		VOR MDA(H) 790' (779')			
	ALS out	ALS out	ALS out	ALS out		
A	1200m	1600m	1200m	1600m	100	1130' (1116')-2000m
B		2000m		2000m	135	1130' (1116')-2400m
C		3600m		3600m	180	
D		4000m		4000m	205	1230' (1216')-4800m

PANS OPS 4

TLPL/UVF



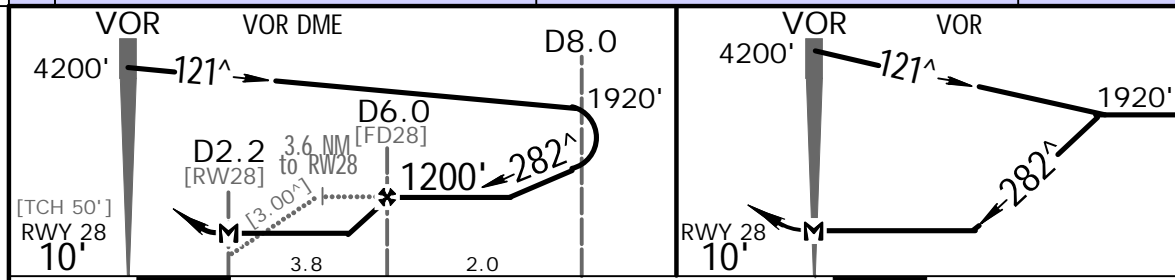
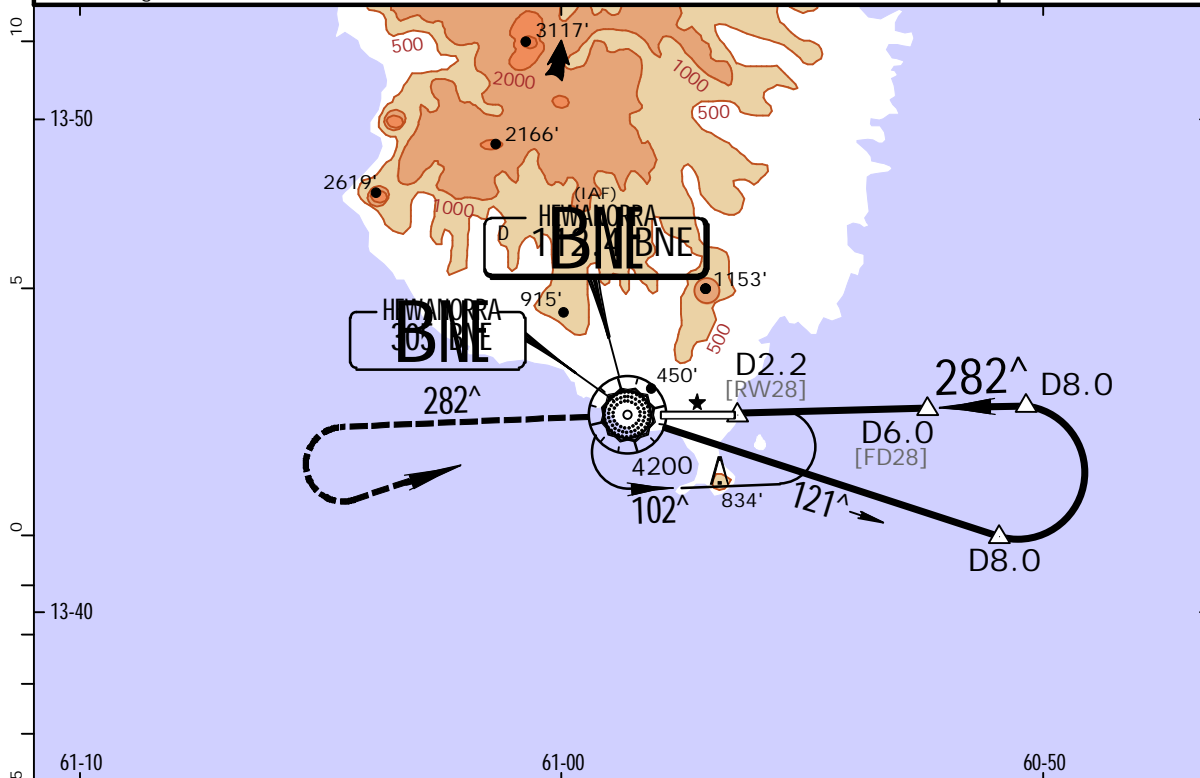
VIEUX FORT, ST LUCIA  
 VOR DME Rwy 28  
 VOR Rwy 28

HEWANORRA INTL

3 SEP 10

13-2

*ST LUCIA Approach 119.8		*HEWANORRA Tower 118.3		*Ground 121.6	
VOR BNE 112.4	Final Apch Crs 282 <sup>^</sup>	VOR DME Minimum Alt D6.0 1200' (1190') VOR No FAF	MDA(H) 770' (760')	Apt Elev 14' Rwy 28 10'	<p>MSA BNE NDB</p>
MISSED APCH: Climb outbound on BNE VOR R-282 to 4200', LEFT turn to BNE VOR and hold, or as directed by ATC . Alt Set: hPa (IN on req) Rwy Elev: 0 hPa Trans level: By ATC Trans alt: 9000' 1. CAUTION: Aircraft not to descend below 5200' when approaching from southwest until within 15 NM from BNE VOR. 2. CAUTION: High terrain north and south of airport. 3. Windshear and turbulence on final approach Rwy 10 when wind from northeast is 15 kts or greater.					



Gnd Speed-Kts	70	90	100	120	140	160	PAPI-L	4200' on 112.4 R-282	LT	BNE 112.4
Descent angle [3.00 <sup>^</sup> ]	372	478	531	637	743	849				
VOR DME: MAP at D2.2										
VOR: MAP at VOR										

STRAIGHT-IN LANDING RWY 28			CIRCLE-TO-LAND		
MDA(H) 770' (760')			Not Authorized North of Rwy 10/28		
	VOR DME	VOR	Max Kts	MDA(H)	
A	1600m	1600m	100	1130' (1116') -2000m	
B	2000m		135	1130' (1116') -2400m	
C	3600m		180		
D	4000m		205	1230' (1216') -4800m	

PANS OPS 4

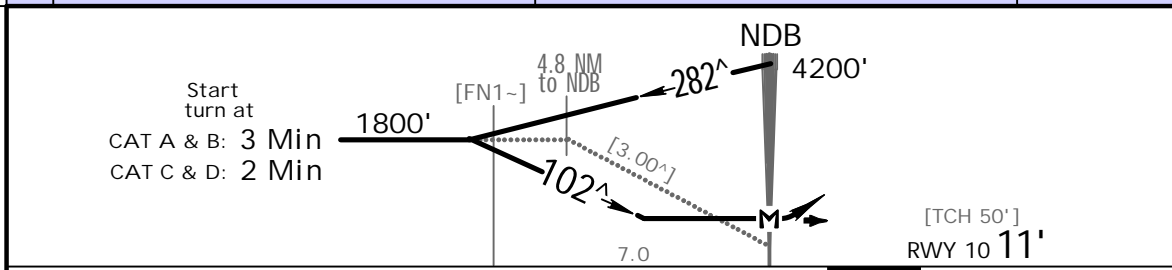
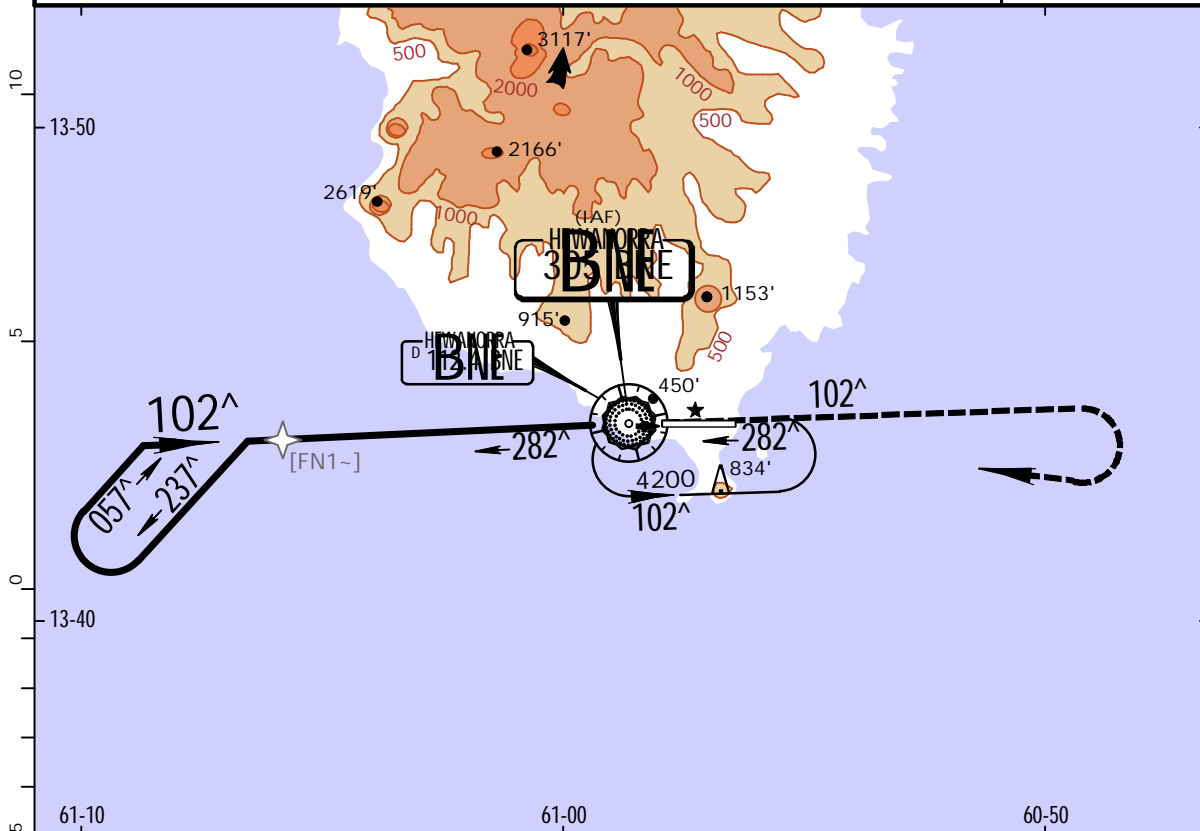


TLPL/UVF  
HEWANORRA INTL

**JEPPesen**  
3 SEP 10 **16-1**

**VIEUX FORT, ST LUCIA**  
**NDB Rwy 10**

*ST LUCIA Approach 119.8		*HEWANORRA Tower 118.3		*Ground 121.6	
NDB BNE <b>305</b>	Final Apch Crs <b>102<sup>^</sup></b>	No FAF	MDA(H) <b>790'</b> (779')	Apt Elev 14' Rwy 10 <b>11'</b>	<p>MSA BNE NDB</p>
<p>MISSED APCH: Climb on bearing 102<sup>^</sup> from BNE NDB to 4200', RIGHT turn, return to BNE NDB and hold, or as directed by ATC.</p> <p>Alt Set: hPa (IN on req) Rwy Elev: 0 hPa Trans level: By ATC Trans alt: 9000'</p> <p>1. CAUTION: Aircraft not to descend below 5200' when approaching from southwest until within 15 NM from BNE VOR. 2. CAUTION: High terrain north and south of airport. 3. Windshear and turbulence on final approach Rwy 10 when wind from northeast is 15 kts or greater.</p>					



Gnd Speed-Kts	70	90	100	120	140	160	ALS PAPI 4200' on BNE 305 102 <sup>^</sup> RT BNE 305
Descent angle [3.00 <sup>^</sup> ]	372	478	531	637	743	849	
MAP at NDB							

STRAIGHT-IN LANDING RWY10			CIRCLE-TO-LAND		
MDA(H) <b>790'</b> (779')			Not Authorized North of Rwy 10/28		
		ALS out	Max Kts	MDA(H)	
A	1200m	1600m	100	1130' (1116') -2000m	
B	2000m		135	1130' (1116') -2400m	
C	3600m		180	1230' (1216') -4800m	
D	4000m		205		

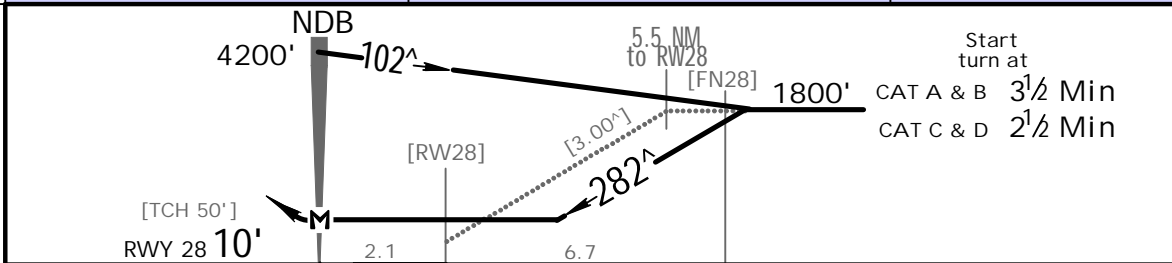
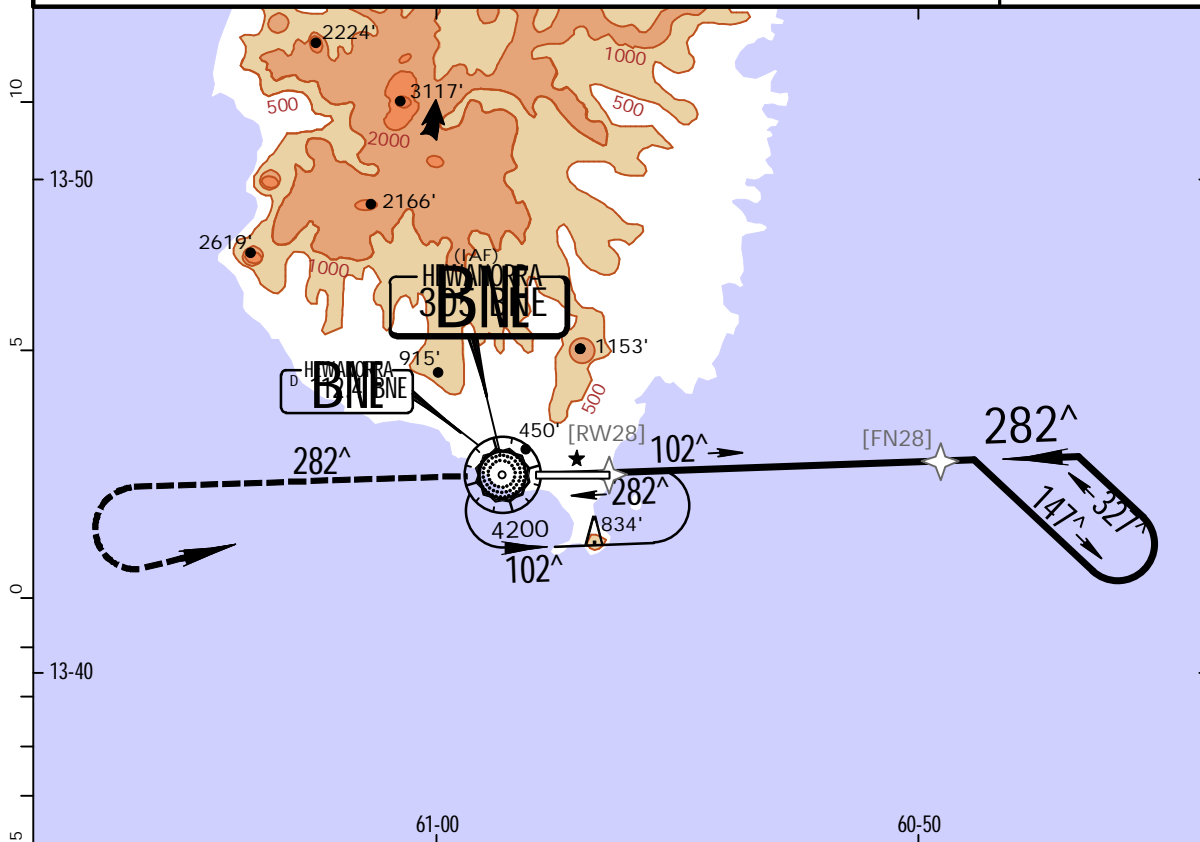
PANS OPS 4

**TLPL/UVF**  
HEWANORRA INTL

**JEPPESEN**  
3 SEP 10 (16-2)

**VIEUX FORT, ST LUCIA**  
NDB Rwy 28

*ST LUCIA Approach 119.8		*HEWANORRA Tower 118.3		*Ground 121.6	
NDB BNE 305	Final Apch Crs 282 <sup>^</sup>	No FAF	MDA(H) 890' (880')	Apt Elev 14' Rwy 28 10'	<p>MSA BNE NDB</p>
<p><b>MISSED APCH:</b> Climb on bearing 282<sup>^</sup> from BNE NDB to 4200', then LEFT turn, return to BNE NDB and hold, or as directed by ATC.</p> <p>Alt Set: hPa (IN on req) Rwy Elev: 0 hPa Trans level: By ATC Trans alt: 9000'</p> <p>1. CAUTION: Aircraft not to descend below 5200' when approaching from southwest until within 15 NM from BNE VOR. 2. CAUTION: High terrain north and south of airport. 3. Windshear and turbulence on final approach Rwy 10 when wind from northeast is 15 kts or greater.</p>					



Gnd speed-Kts	70	90	100	120	140	160	PAPI-L	4200' on BNE 305 282 <sup>^</sup> LT BNE 305
Descent angle [3.00 <sup>^</sup> ]	372	478	531	637	743	849		
MAP at NDB								

STRAIGHT-IN LANDING RWY28			CIRCLE-TO-LAND		
MDA(H) 890' (880')			Not Authorized North of Rwy 10/28.		
		Max Kts.	MDA(H)		
A		100	1130' (1116') -2000m		
B	2000m	135	1130' (1116') -2400m		
C	4400m	180	1230' (1216') -4800m		
D	4800m	205			

PANS OPS 4

## Chart changes since cycle 12-2015

ADD = added chart, REV = revised chart, DEL = deleted chart.

ACT	PROCEDURE IDENT	INDEX	REV DATE	EFF DATE
<b>VIEUXFORT, (HEWANORRA INTL - TLPL)</b>				
REV	RNAV (GNSS) RWY 10	12-1	19 Jun 2015	
REV	RNAV (GNSS) RWY 28	12-2	19 Jun 2015	

## TERMINAL CHART CHANGE NOTICES

No Chart Change Notices for Airport TLPL