

List of pages in this Trip Kit

Trip Kit Index

Airport Information For TKPK

Terminal Charts For TKPK

Revision Letter For Cycle 13-2015

Change Notices

Notebook

General Information

Location: ST KITTS I. KNA
ICAO/IATA: TKPK / SKB
Lat/Long: N 17 18.7 W 062 43.1
Elevation: 168 ft

Airport Use: Public
Daylight Savings: Not Observed
UTC Conversion: +4:00 = UTC
Magnetic Variation: 14.0° W

Fuel Types: Jet A-1
Customs: Yes
Airport Type: IFR
Landing Fee: No
Control Tower: Yes
Jet Start Unit: No
LLWS Alert: No
Beacon: Yes
Night VFR Capable

Sunrise: 0939 Z
Sunset: 2249 Z

Runway Information

Runway: 07
Length x Width: 7618 ft x 148 ft
Surface Type: asphalt
TDZ-Elev: 168 ft
Lighting: Edge, ALS
Displaced Threshold: 240 ft

Runway: 25
Length x Width: 7618 ft x 148 ft
Surface Type: asphalt
TDZ-Elev: 160 ft
Lighting: Edge
Displaced Threshold: 139 ft

Communication Information

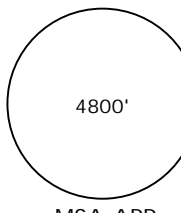
Bradshaw Intl Tower: 118.300
Bradshaw Intl Ground: 121.900

Bradshaw Intl Approach: 119.600

TKPK/SKB
BRADSHAW INTL

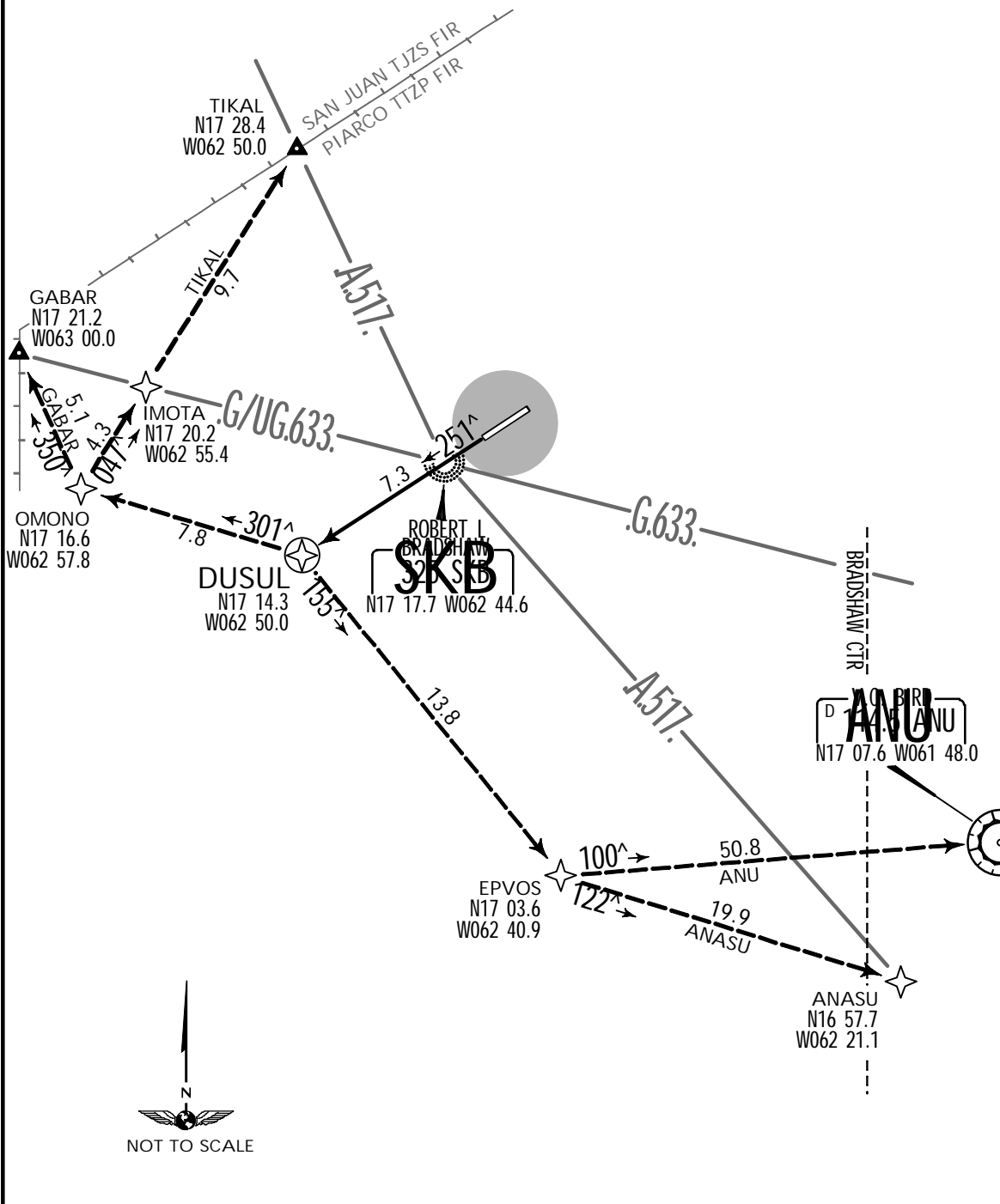
JEPPESEN
23 DEC 11 (10-3)

ST KITTS I.
ST KITTS
.RNAV.SID.

Apt Elev 168'	Trans level: By ATC Trans alt: 5000' 1. GNSS required. 2. DME/DME not authorized.	 4800' MSA ARP
------------------	---	---

DUSUL ONE RNAV (GNSS) DEPARTURE
[DUSUL1]
(RWY 25)

SPEED: MAX 250 KT BELOW 10000'



INITIAL CLIMB

Climb to assigned altitude/flight level on course 251° to DUSUL, then via assigned transition.

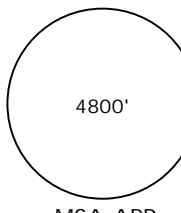
TRANSITIONS

ANASU	DUSUL, EPVOS, ANASU.
ANU	DUSUL, EPVOS, ANU.
GABAR	DUSUL, OMONO, GABAR.
TIKAL	DUSUL, OMONO, IMOTA, TIKAL.

TKPK/SKB
BRADSHAW INTL

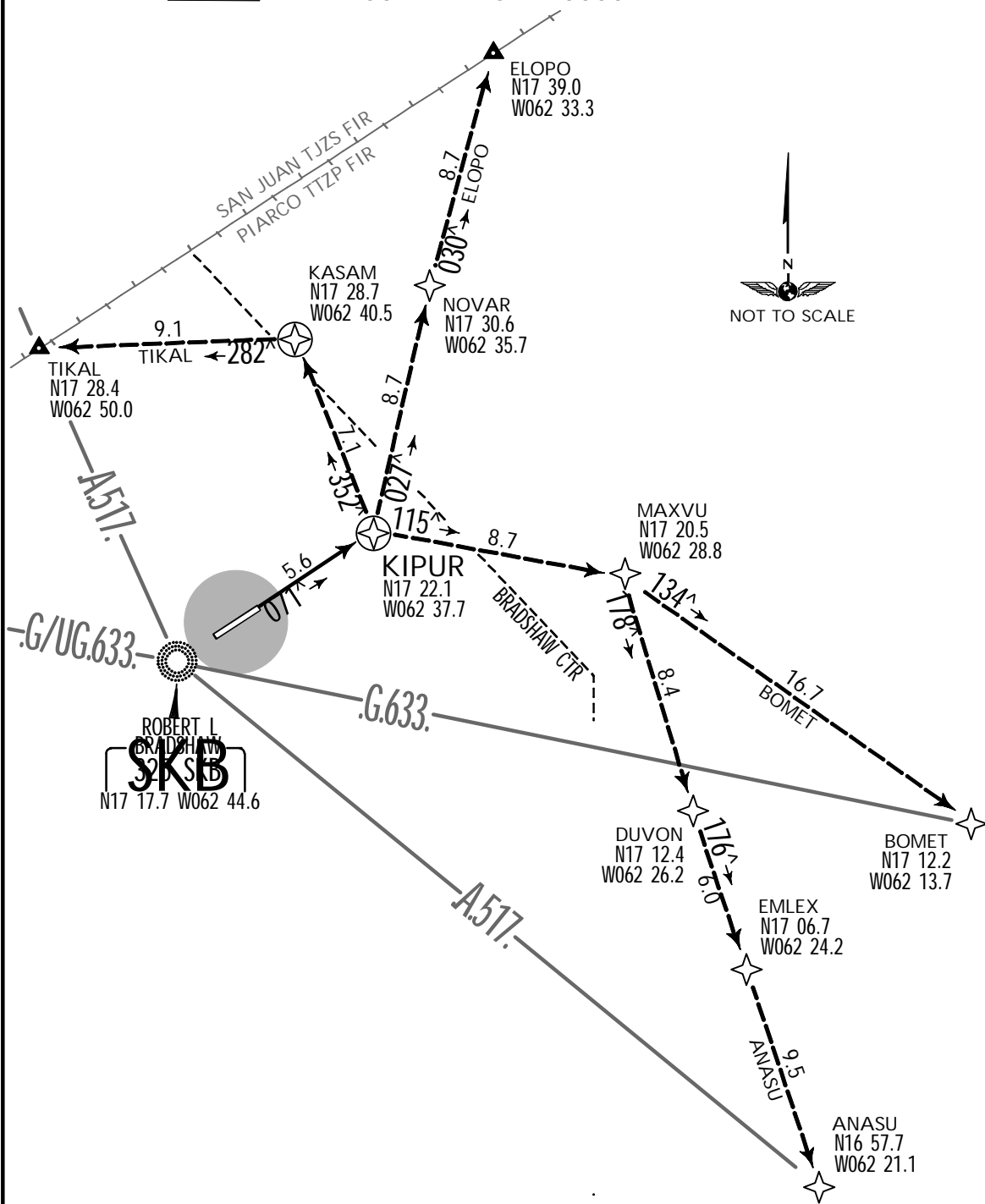
JEPPESEN
23 DEC 11 (10-3A)

ST KITTS I,
ST KITTS
.RNAV.SID.

Apt Elev 168'	Trans level: By ATC Trans alt: 5000' 1. GNSS required. 2. DME/DME not authorized.	 4800' MSA ARP
------------------	---	---

KIPUR ONE RNAV (GNSS) DEPARTURE
[KIPUR1]
(RWY 07)

SPEED: MAX 250 KT BELOW 10000'



INITIAL CLIMB

Climb to assigned altitude/flight level on course 071° to KIPUR, then via assigned transition.

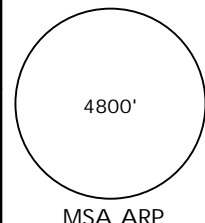
TRANSITIONS

ANASU	KIPUR, MAXVU, DUVON, EMLEX, ANASU.
BOMET	KIPUR, MAXVU, BOMET.
ELOPO	KIPUR, NOVAR, ELOPO.
TIKAL	KIPUR, KASAM, TIKAL.

TKPK/SKB
BRADSHAW INTL

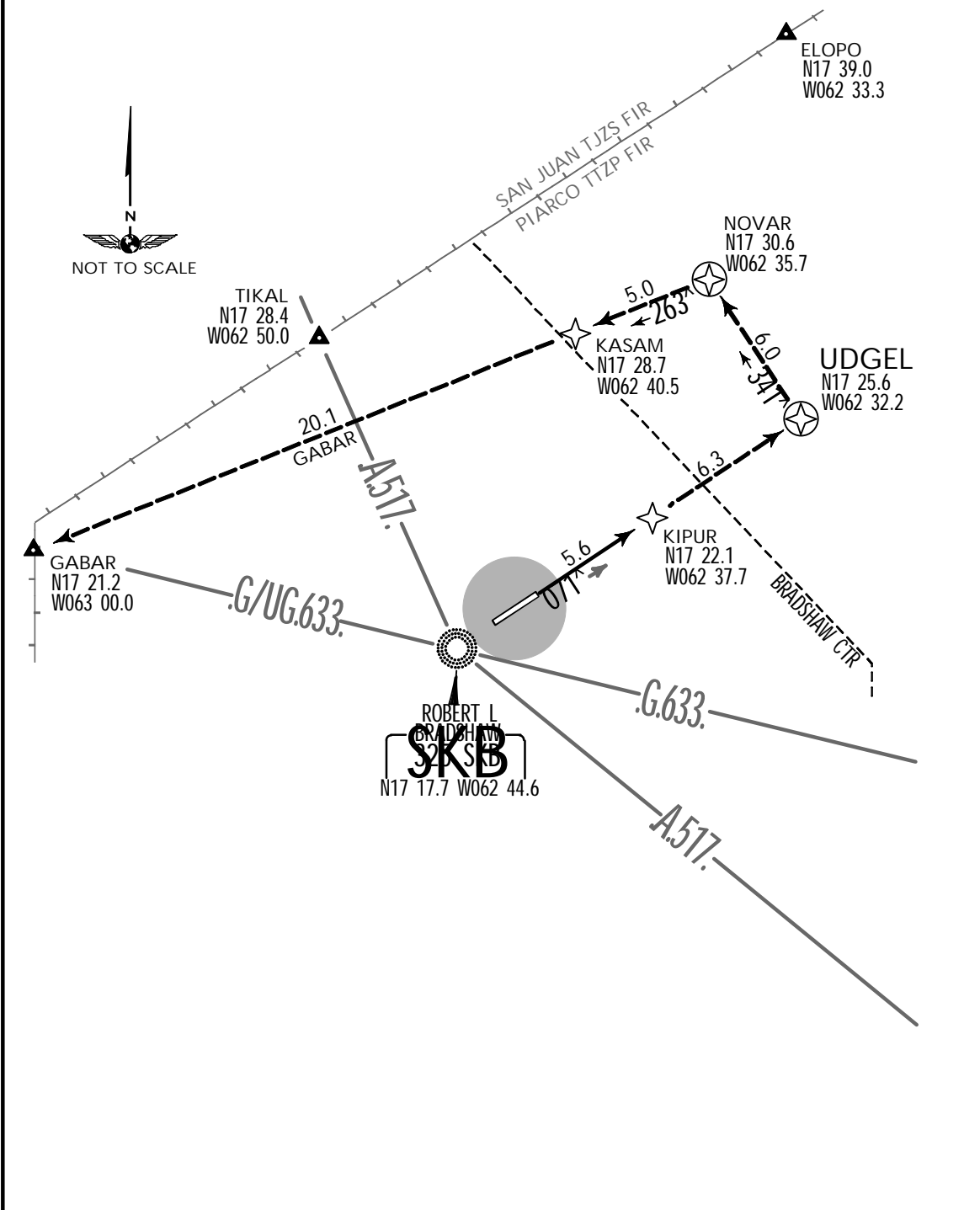
JEPPESEN
23 DEC 11 (10-3B)

ST KITTS I,
ST KITTS
.RNAV.SID.

Apt Elev 168'	Trans level: By ATC Trans alt: 5000' 1. GNSS required. 2. DME/DME not authorized.	 4800' MSA ARP
------------------	---	---

UDGEL ONE RNAV (GNSS) DEPARTURE
[UDGEL1]
(RWY 07)

SPEED: MAX 250 KT BELOW 10000'



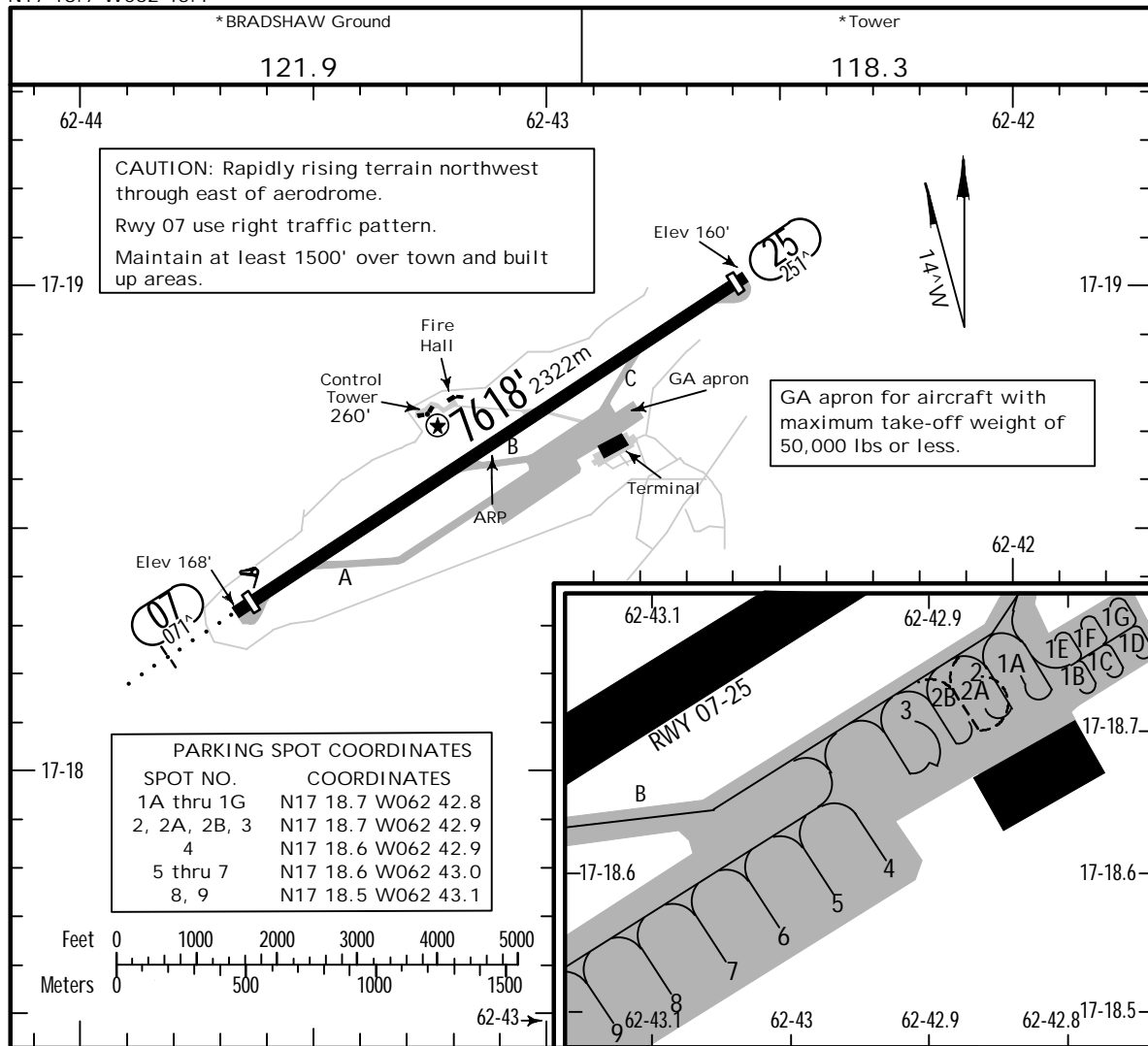
INITIAL CLIMB	
Climb to assigned altitude/flight level on course 071° to KIPUR, then via assigned transition.	
TRANSITION	
GABAR	KIPUR, UDGEL, NOVAR, KASAM, GABAR.

CHANGES: New procedure at this airport.

TKPK/SKB
 Apt Elev 168'
 N17 18.7 W062 43.1

JEPPESEN
 21 NOV 14 (10-9)

ST KITTS I, ST KITTS
 BRADSHAW INTL



ADDITIONAL RUNWAY INFORMATION

RWY		USABLE LENGTHS			WIDTH
		Threshold	Landing Beyond Glide Slope	Take-off	
07	MIRL SALS PAPI-L (angle 3.45°)	7379' 2249m			148'
25	MIRL PAPI-L (angle 3.0°)	7480' 2280m			45m

TAKE-OFF

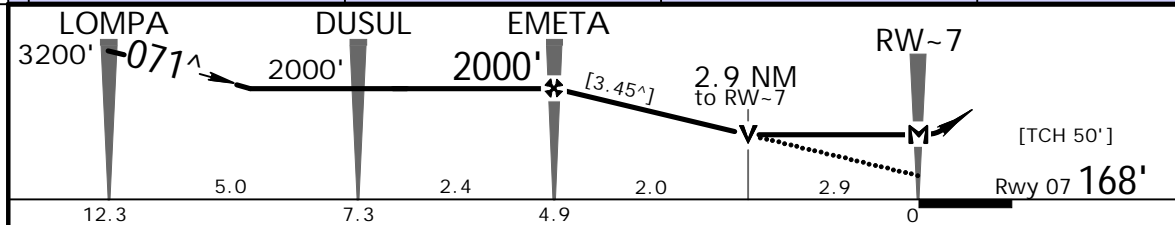
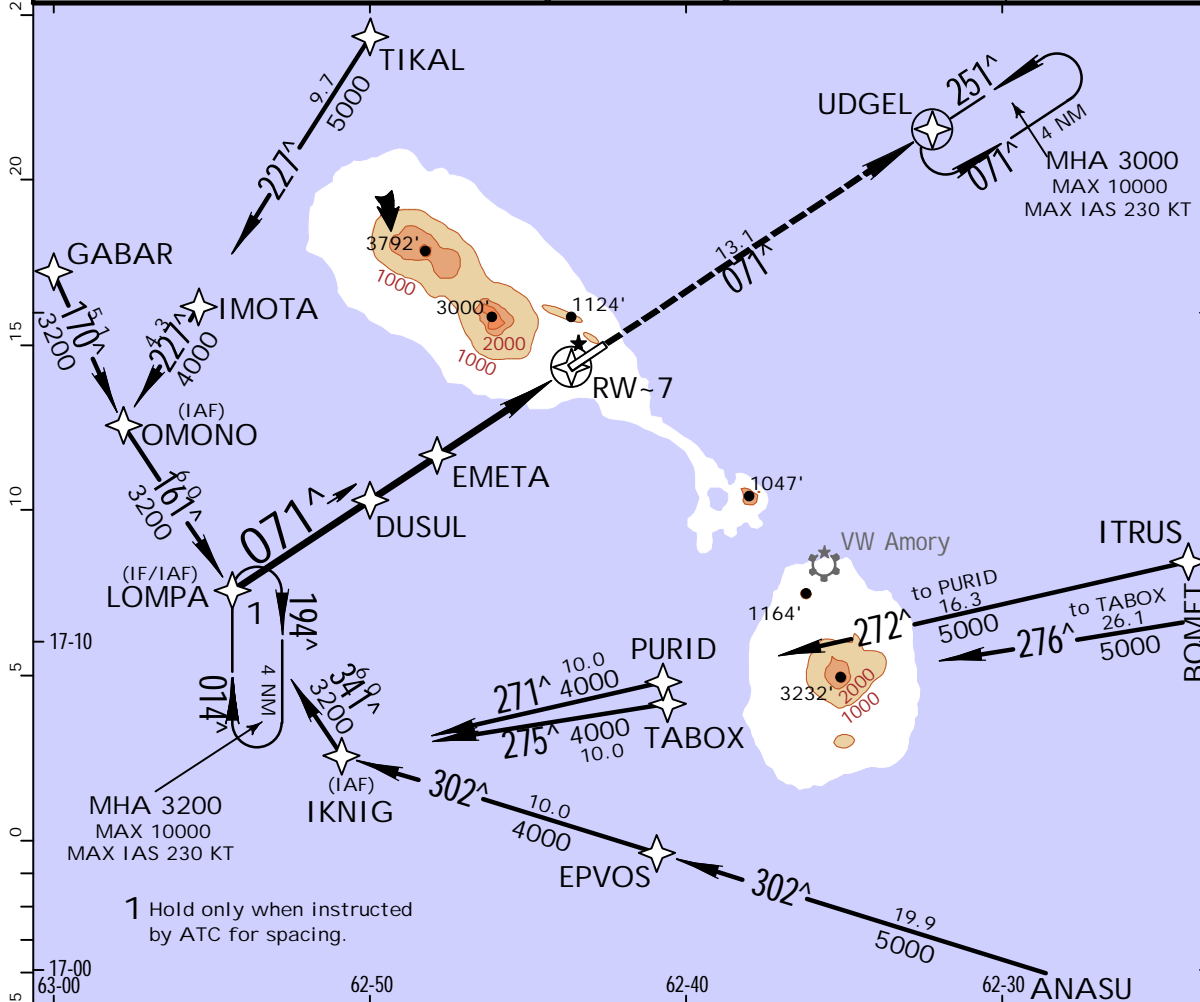
	AIR CARRIER (JAA)		AIR CARRIER (FAR 121)	
	LVP must be in force ALL Rwy's RCLM (Day only) or RL	All Rwy's RCLM (Day only) or RL	All Rwy's Adequate Vis Ref	
A			2 Eng	
B	250m	400m	3 & 4 Eng	400m
C				
D	300m			

TKPK/SKB
BRADSHAW INTL

JEPPESEN
6 JAN 12 (12-1)

ST KITTS I, ST KITTS
RNAV (GNSS) Rwy 07

*BRADSHAW Approach 119.6		*BRADSHAW Tower 118.3		*Ground 121.9	
RNAV	Final ApcH Crs 071[^]	Minimum Alt EMETA 2000' (1832')	MDA(H) 1270' (1102')	Apt Elev 168' Rwy 07 168'	4800'
MISSED APCH: Climb to 3000' direct UDGEL and hold, or as directed by ATC.					
Alt Set: INCHES Trans level: By ATC Trans alt: 5000'					MSA ARP
1. GNSS Required. 2. DME/DME not authorized. 3. Unless ATC clearance is obtained for an RNAV/GNSS procedure, the navigation and position-reporting of all aircraft shall be conducted with reference to conventional ground-based navigation aids.					



Gnd speed-Kts	70	90	100	120	140	160	SALS 3000'	PAPI UDGEL
Descent Angle [3.45 [^]]	427	549	611	733	855	977		
MAP at RW-7								

STRAIGHT-IN LANDING RWY 07			CIRCLE-TO-LAND		
MDA(H) 1270' (1102')			Not Authorized North of Rwy 07/25		
ALS out			Max Kts	MDA(H)	
A	2000m		100	1270'(1102') -2000m	
B	2400m		135	1270'(1102') -2400m	
C	4800m		180	1270'(1102') -4800m	
D			205	1280'(1112') -4800m	

PANS OPS

CHANGES: New procedure.

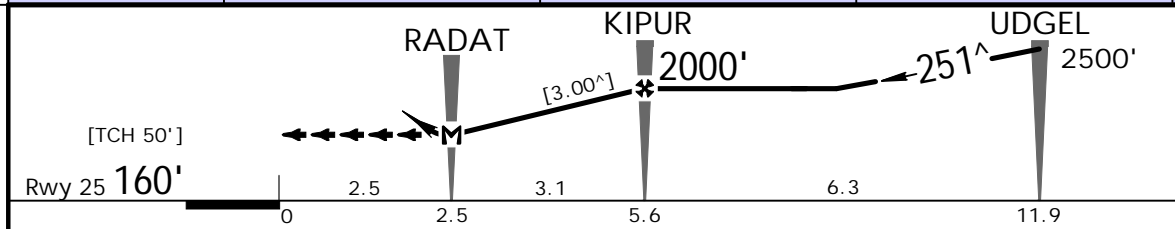
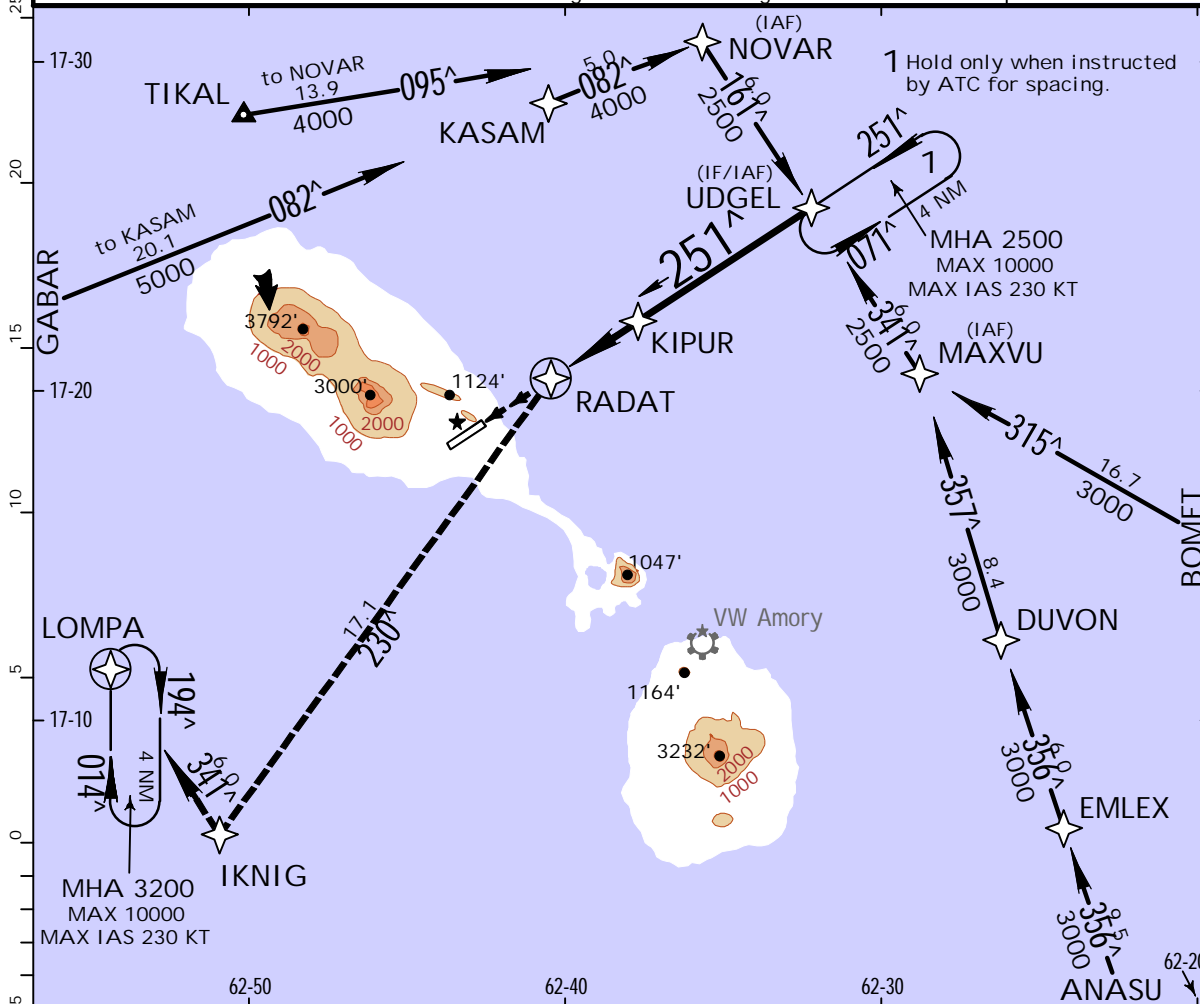
JEPPESEN, 2012. ALL RIGHTS RESERVED.

TKPK/SKB BRADSHAW INTL

JEPPESEN
6 JAN 12 (12-2)

ST KITTS I, ST KITTS RNAV (GNSS) Rwy 25

*BRADSHAW Approach 119.6		*BRADSHAW Tower 118.3		*Ground 121.9	
RNAV	Final Apch Crs 251 [^]	Minimum Alt KIPUR 2000' (1840')	MDA(H) 1000' (840')	Apt Elev 168' Rwy 25 160'	4800'
MISSED APCH: Climbing LEFT turn to 3200' direct IKNIG, then RIGHT turn direct LOMPA and hold.					
Alt Set: INCHES Trans level: By ATC Trans alt: 5000' 1. GNSS Required. 2. DME/DME not authorized. 3. Unless ATC clearance is obtained for an RNAV/GNSS procedure, the navigation and position-reporting of all aircraft shall be conducted with reference to conventional ground-based navigation aids.					MSA ARP



Gnd speed-Kts	70	90	100	120	140	160	PAPI-L 3200' LT	IKNIG
Descent Angle [3.00 [^]]	372	478	531	637	743	849		
MAP at RADAT								

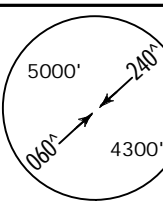
STRAIGHT-IN LANDING RWY 25			CIRCLE-TO-LAND		
MDA(H) 1000' (840')			Not Authorized North of Rwy 07/25		
		Max Kts	MDA(H)		
A	1600m	100	1280' (1120')-1600m		
B	2000m	135	1280' (1120')-2000m		
C	4000m	180	1280' (1120')-4000m		
D	4400m	205	1280' (1120')-4400m		

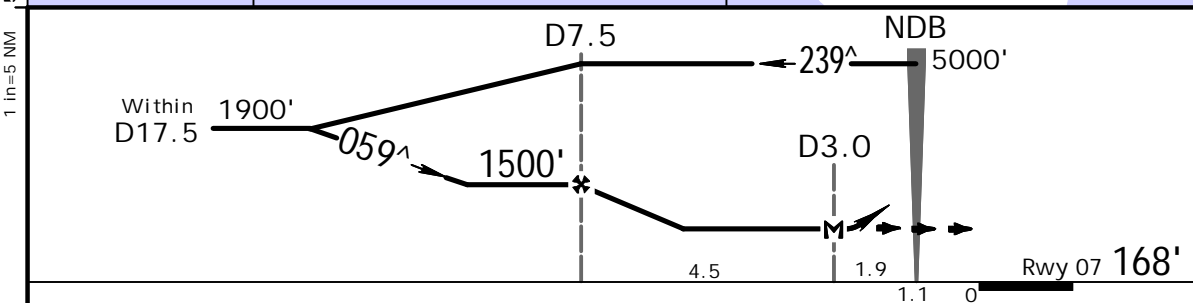
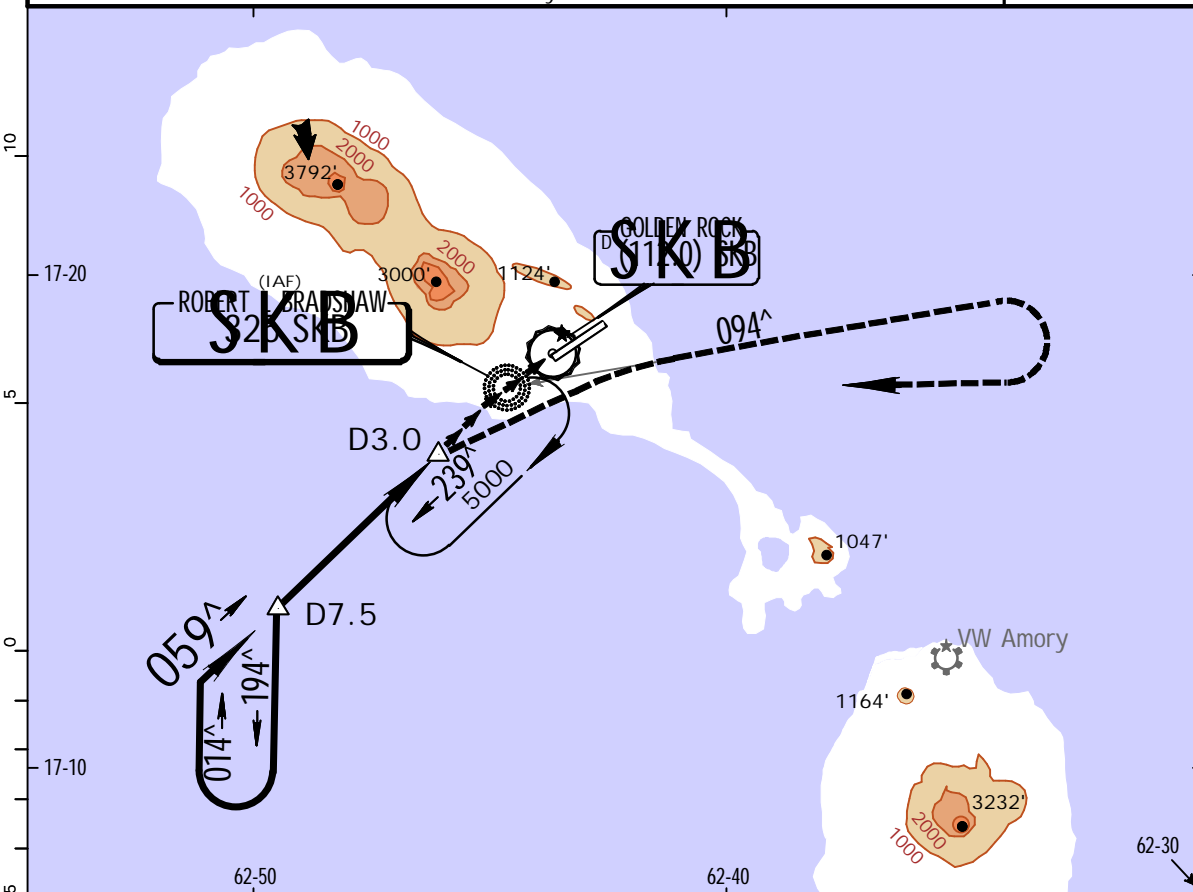
PANS OPS

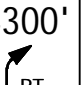
TKPK/SKB
BRADSHAW INTL

JEPPESSEN
6 JAN 12 **(16-1)**

ST KITTS I., ST KITTS
NDB DME Rwy 07

*BRADSHAW Approach		*BRADSHAW Tower		*Ground	
119.6		118.3		121.9	
NDB SKB 325	Final Apch Crs 059[^]	Minimum Alt D7.5 1500' (1332')	MDA(H) 1100' (932')	Apt Elev 168'	Rwy 07 168'
MISSED APCH: Immediate RIGHT climbing turn to track 094 [^] bearing from SKB NDB, climb to 4300' then RIGHT turn to SKB NDB at 5000' and hold or as directed by ATC.					
Alt Set: INCHES		Trans level: By ATC		Trans alt: 5000'	



MAP at D3.0									SALS	4300'	SKB 325
									PAPI		094 [^]

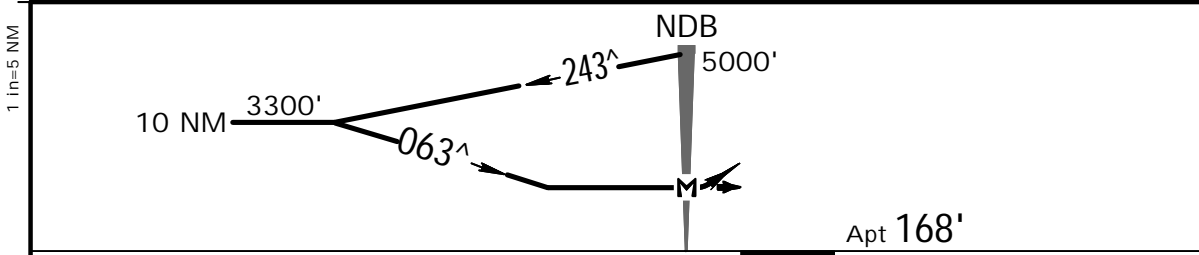
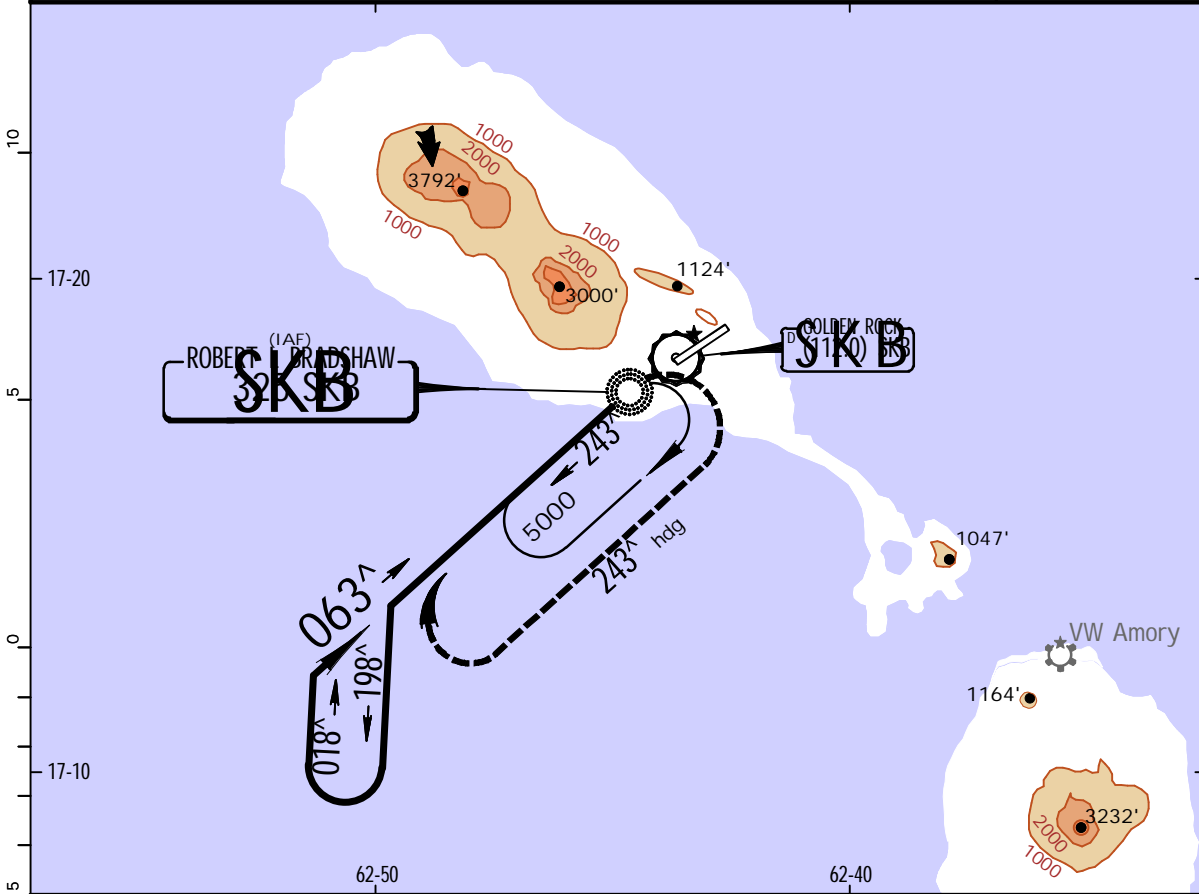
STRAIGHT-IN LANDING RWY 07		CIRCLE-TO-LAND	
MDA(H) 1100' (932')		Not Authorized North of Rwy 07/25	
ALS out		MDA(H)	
A	5.6 km	Max Kts.	1100' (932') - 5.6 km
B		100	
C		135	
D		205	

TKPK/SKB
BRADSHAW INTL

JEPPESSEN
6 JAN 12 **(16-2)**

ST KITTS I, ST KITTS
NDB-A Rwy 07

BRIEFING STRIP™	*BRADSHAW Approach		*BRADSHAW Tower		*Ground	
	119.6		118.3		121.9	
	NDB SKB 325	Final Apch Crs 063[^]	No FAF	MDA(H) Refer to Minimums	Apt Elev 168'	
MISSED APCH: Climbing RIGHT turn to 3500' on 243 [^] heading, then climbing RIGHT turn to 5000', return to SKB NDB and hold.						
Alt Set: INCHES			Trans level: By ATC		Trans alt: 5000'	
1. Procedure not authorized when Twr inop.						MSA SKB NDB



				SALS	3500'	243 [^]	5000'	SKB
				PAPI	RT	hdg	RT	325
MAP at NDB								

		CIRCLE-TO-LAND	
Not Authorized North of Rwy 07/25			
	Max Kts	MDA(H)	
A	100	1580' (1412')-1760m	
B	135	1580' (1412')-2080m	
C	180	1580' (1412')-4160m	
D	205		

Chart changes since cycle 12-2015

ADD = added chart, REV = revised chart, DEL = deleted chart.

ACT PROCEDURE IDENT

INDEX

REV DATE

EFF DATE

ST KITTS I., (BRADSHAW INTL - TKPK)

TERMINAL CHART CHANGE NOTICES

No Chart Change Notices for Airport TKPK