

List of pages in this Trip Kit

Trip Kit Index

Airport Information For TGPY

Terminal Charts For TGPY

Revision Letter For Cycle 13-2015

Change Notices

Notebook

General Information

Location: ST GEORGES GRD
ICAO/IATA: TGPY / GND
Lat/Long: N 12 00.3 W 061 47.2
Elevation: 45 ft

Airport Use: Public
Daylight Savings: Not Observed
UTC Conversion: +4:00 = UTC
Magnetic Variation: 14.0° W

Fuel Types: 100 Octane (LL), 100-130 Octane, Jet A-1
Customs: Yes
Airport Type: IFR
Landing Fee: Yes
Control Tower: Yes
Jet Start Unit: No
LLWS Alert: No
Beacon: Yes
Night VFR Capable

Sunrise: 0946 Z
Sunset: 2235 Z

Runway Information

Runway: 10
Length x Width: 8967 ft x 148 ft
Surface Type: asphalt
TDZ-Elev: 25 ft
Lighting: Edge, ALS
Stopway: 194 ft

Runway: 28
Length x Width: 8967 ft x 148 ft
Surface Type: asphalt
TDZ-Elev: 45 ft
Lighting: Edge

Communication Information

Maurice Bishop Intl Tower: 118.900
Maurice Bishop Intl Ground: 121.900
Maurice Bishop Intl Approach: 119.400

TGPY/GND

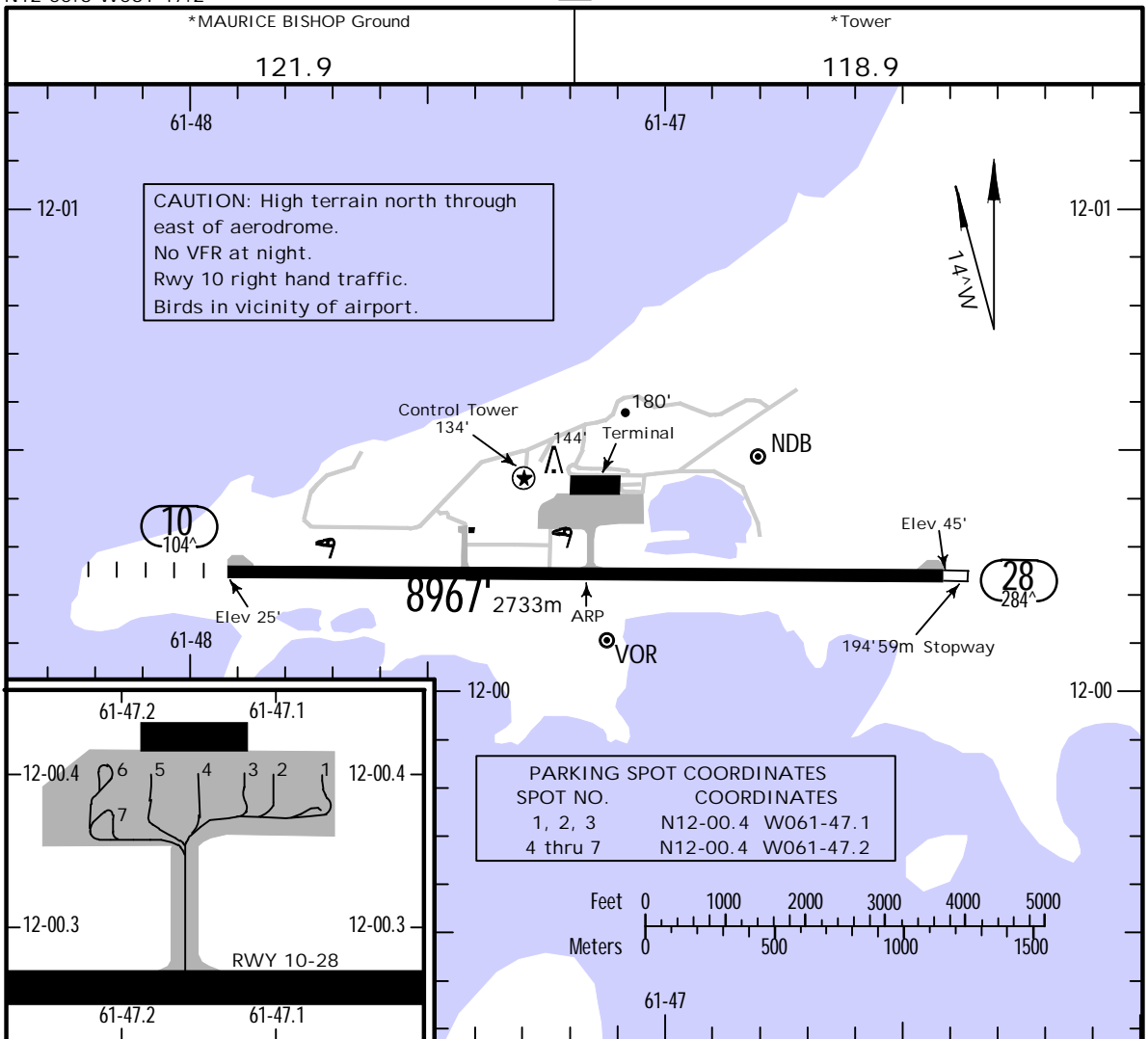
Apt Elev 45
N12 00.3 W061 47.2

JEPPESEN

25 APR 14 (10-9)

ST GEORGES, GRENADA

MAURICE BISHOP INTL



RWY		USABLE LENGTHS			WIDTH
		Threshold	Glide Slope	TAKE-OFF	
10	RL SALS PAPI-L (angle 3.00°)				148'
28	RL				45m

TAKE-OFF & DEPARTURE PROCEDURE	
AIR CARRIER All Rwy's	
A	200m
B	300m
C	
D	400m

DEPARTURE PROCEDURE:

Rwy 10 Northbound: Track segments 276° to 095° clockwise.
Visual climb on runway heading to 400', RIGHT turn track 120° magnetic, ground to 2800', then LEFT on course.

Rwy 10 Southbound: Track segments 096° to 275° clockwise.
Visual climb on runway heading to 400' then RIGHT turn on course.

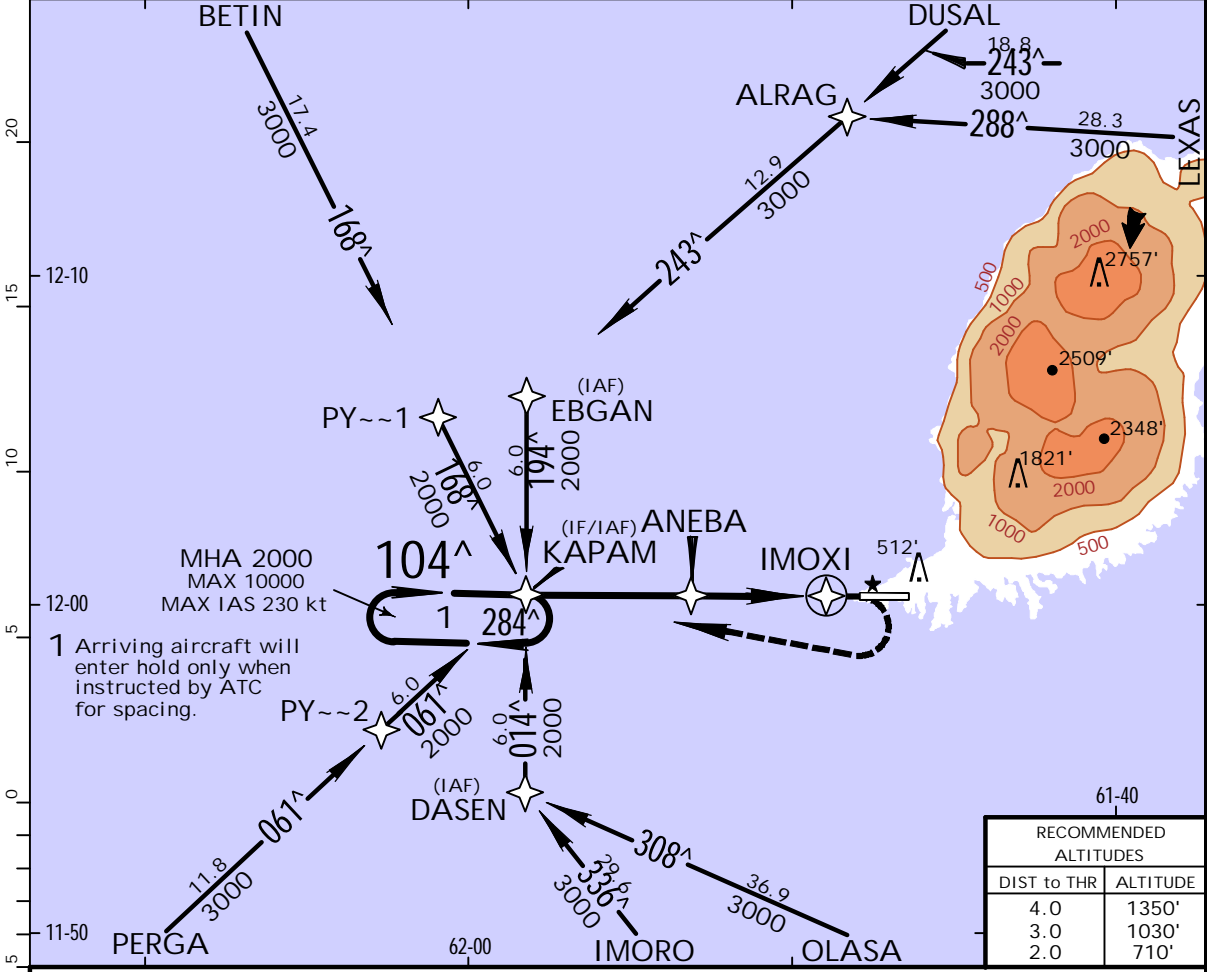
NOTE: 320' per minute required to 1000'.

TGPY/GND
MAURICE BISHOP INTL



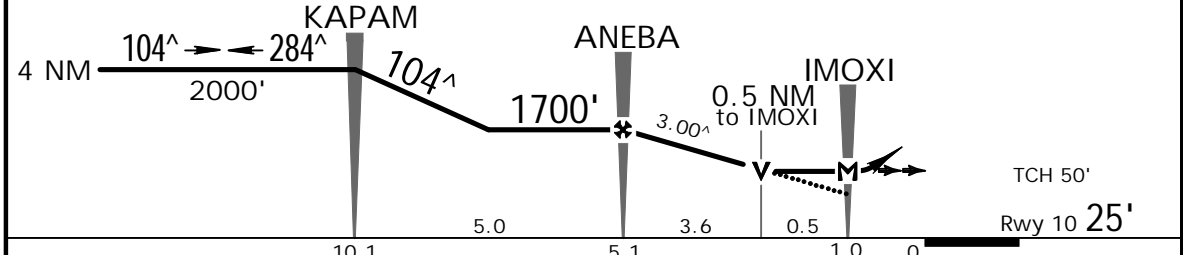
ST GEORGES, GRENADA
RNAV (GNSS) Rwy 10

*MAURICE BISHOP Approach 119.4		*MAURICE BISHOP Tower 118.9		*Ground 121.9	
RNAV	Final Apch Crs 104 [^]	Minimum Alt ANEBA 1700' (1675')	LNAV MDA(H) 550' (525')	Apt Elev 45' Rwy 10 25'	3800'
MISSED APCH: Climbing RIGHT turn to 2000' direct KAPAM and hold, or as directed by ATC.					
Alt Set: hPa (IN on req) Rwy Elev: 1 hPa Trans level: By ATC Trans alt: 4000'					MSA ARP
1. CAUTION: High terrain north through east from airport.					



1 Arriving aircraft will enter hold only when instructed by ATC for spacing.

RECOMMENDED ALTITUDES	
DIST to THR	ALTITUDE
4.0	1350'
3.0	1030'
2.0	710'



Gnd speed-Kts	70	90	100	120	140	160	ALS 2000'	PAPI D → KAPAM
Descent Angle	3.00 [^]	372	478	531	637	743		

PANS OPS	STRAIGHT-IN LANDING RWY 10		Max Kts	CIRCLE-TO-LAND	
	LNAV MDA(H)	ALS out		Not Authorized North of Runway 10-28	MDA(H)
A			100	550' (505')-1900m	
B			135	600' (555')-1900m	
C			180	700' (655')-2400m	
D			205	740' (695')-3600m	

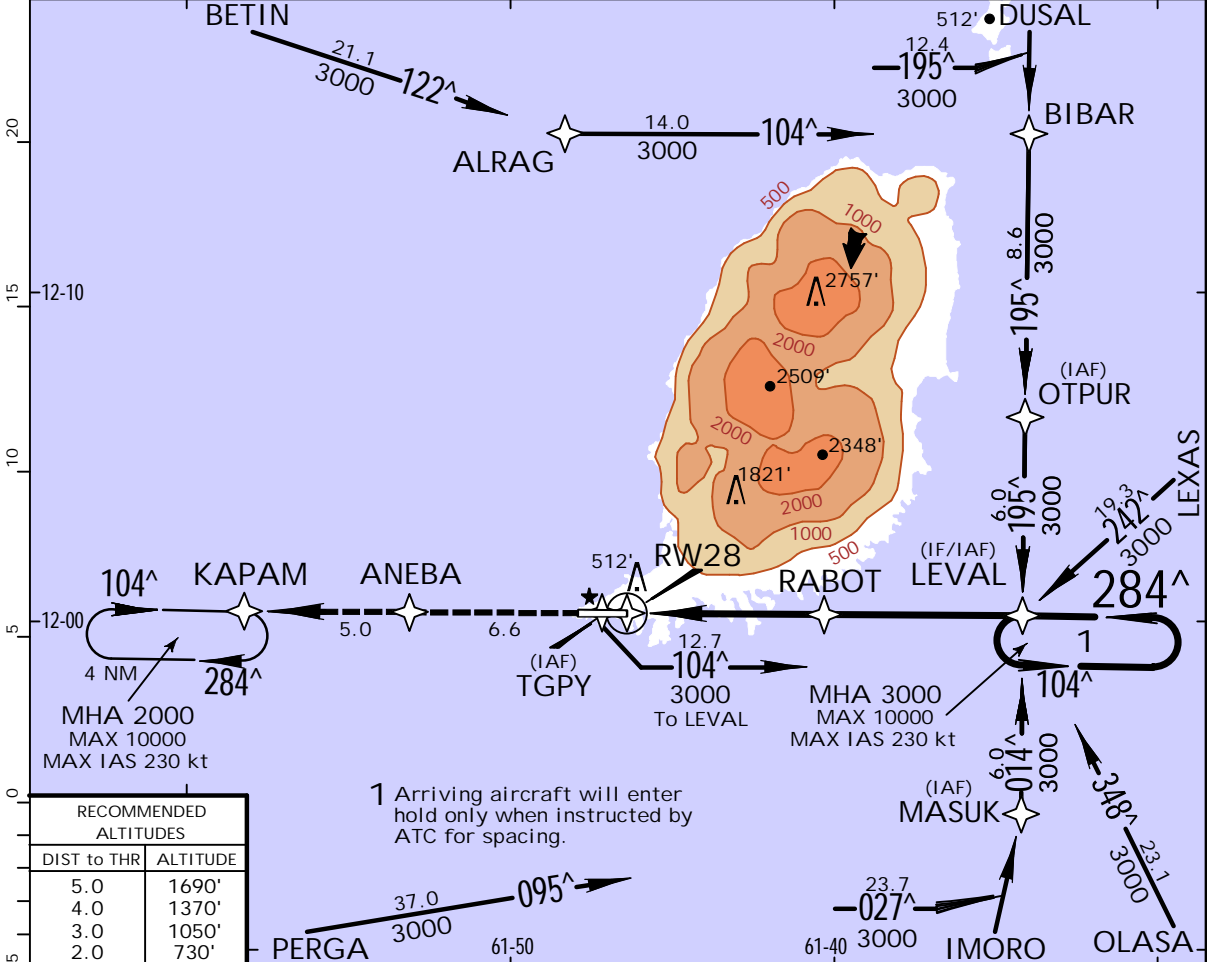
CHANGES: Minimums.

TGPY/GND
MAURICE BISHOP INTL

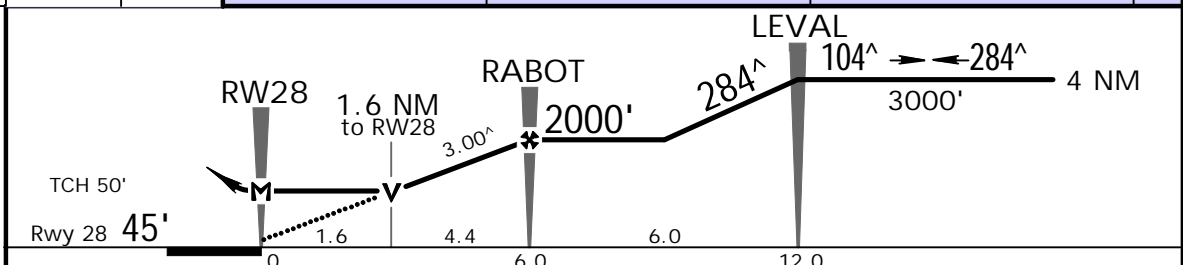
JEPPESSEN
31 JAN 14 (12-2)

ST GEORGES, GRENADA
RNAV (GNSS) Rwy 28

*MAURICE BISHOP Approach 119.4		*MAURICE BISHOP Tower 118.9		*Ground 121.9	
RNAV	Final Apch Crs 284[^]	Minimum Alt RABOT 2000' (1955')	LNAV MDA(H) 610' (565')	Apt Elev 45' Rwy 28 45'	3800'
MISSED APCH: Climb to 2000' direct ANEBA, then KAPAM and hold, or as directed by ATC.					
Alt Set: hPa (IN on req) Rwy Elev: 2 hPa Trans level: By ATC Trans alt: 4000'					MSA ARP
1. CAUTION: High terrain north through east from airport.					



RECOMMENDED ALTITUDES	
DIST to THR	ALTITUDE
5.0	1690'
4.0	1370'
3.0	1050'
2.0	730'



Gnd speed-Kts	70	90	100	120	140	160	2000'	ANEBA
Descent Angle	3.00 [^]	372	478	531	637	743		
MAP at RW28								

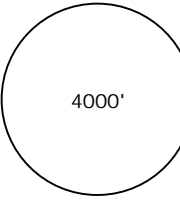
PANS OPS	STRAIGHT-IN LANDING RWY 28		CIRCLE-TO-LAND	
	LNAV MDA(H)		Not Authorized North of Runway 10-28	
A		1600m	MDA(H)	
B			610' (565') - 1600m	
C		2400m	700' (655') - 2400m	
D		2800m	740' (695') - 3600m	

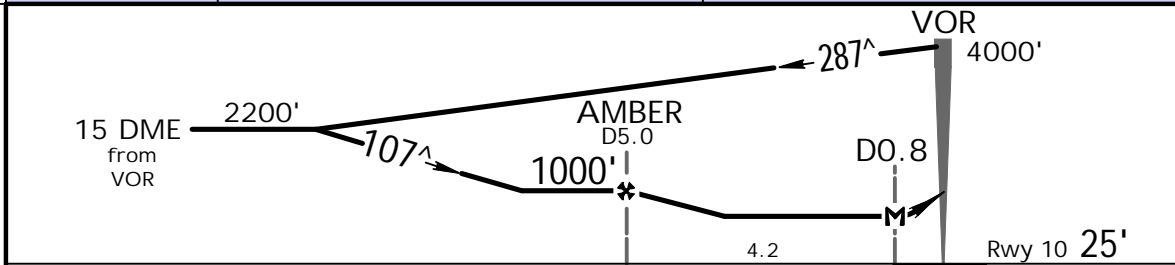
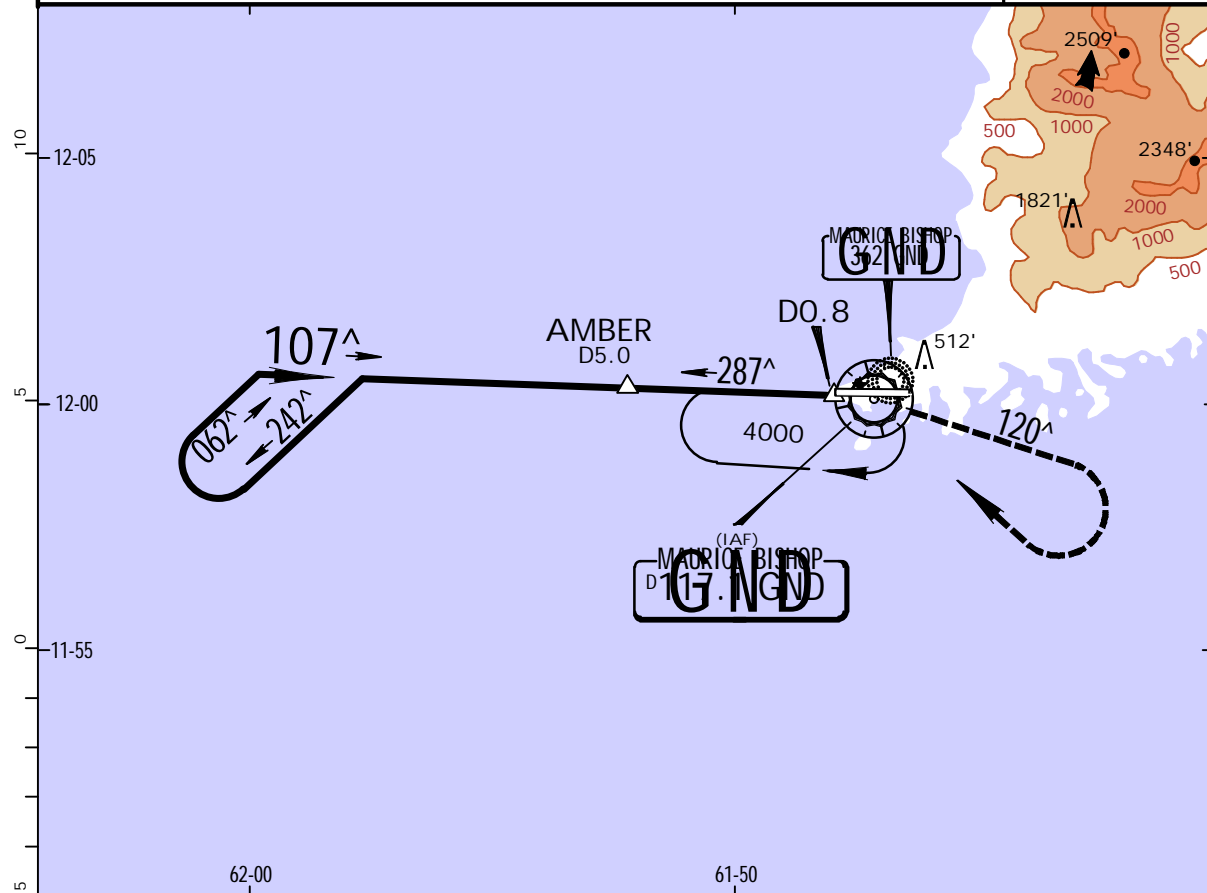
CHANGES: Transition added, minimums.

TGPY/GND
MAURICE BISHOP INTL

JEPESEN
30 MAR 12 **(13-1)** .Eff.5.Apr.

ST GEORGES, GRENADA
VOR DME Rwy 10

*MAURICE BISHOP Approach 119.4		*MAURICE BISHOP Tower 118.9			*Ground 121.9
VOR GND 117.1	Final Apch Crs 107 [^]	Minimum Alt AMBER 1000' (975')	MDA(H) 400' (375')	Apt Elev 45' Rwy 10 25'	 4000' MSA GND VOR
MISSED APCH: Climbing RIGHT turn outbound on GND VOR R-120 to 2000', then climbing RIGHT turn to return to GND VOR at 4000' or as directed by ATC.					
Alt Set: hPa (IN on req) Rwy Elev: 1 hPa Trans level: By ATC Trans alt: 4000' 1. CAUTION: High terrain north through east from airport.					



MAP at DO.8	ALS	2000'	GND on 117.1
	PAPI	RT	R-120

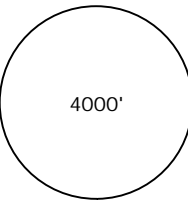
STRAIGHT-IN LANDING RWY 10		CIRCLE-TO-LAND	
MDA(H) 400' (375')		Not Authorized North of Extended Centerline Rwy 10 Only	
ALS out		MDA(H)	
A	2800m	Max Kts	680'(635')-2800m
B		100	
C		135	
D		180	680'(635')-3200m
		205	

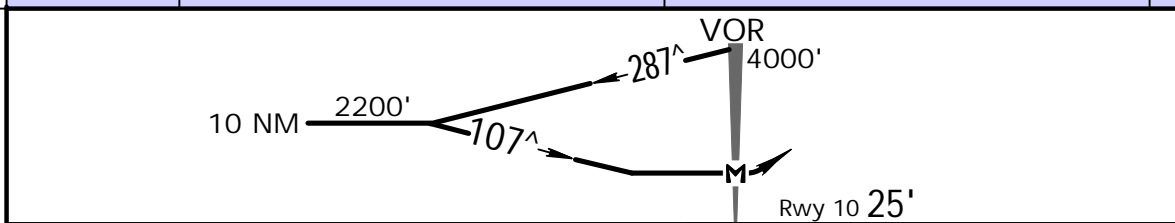
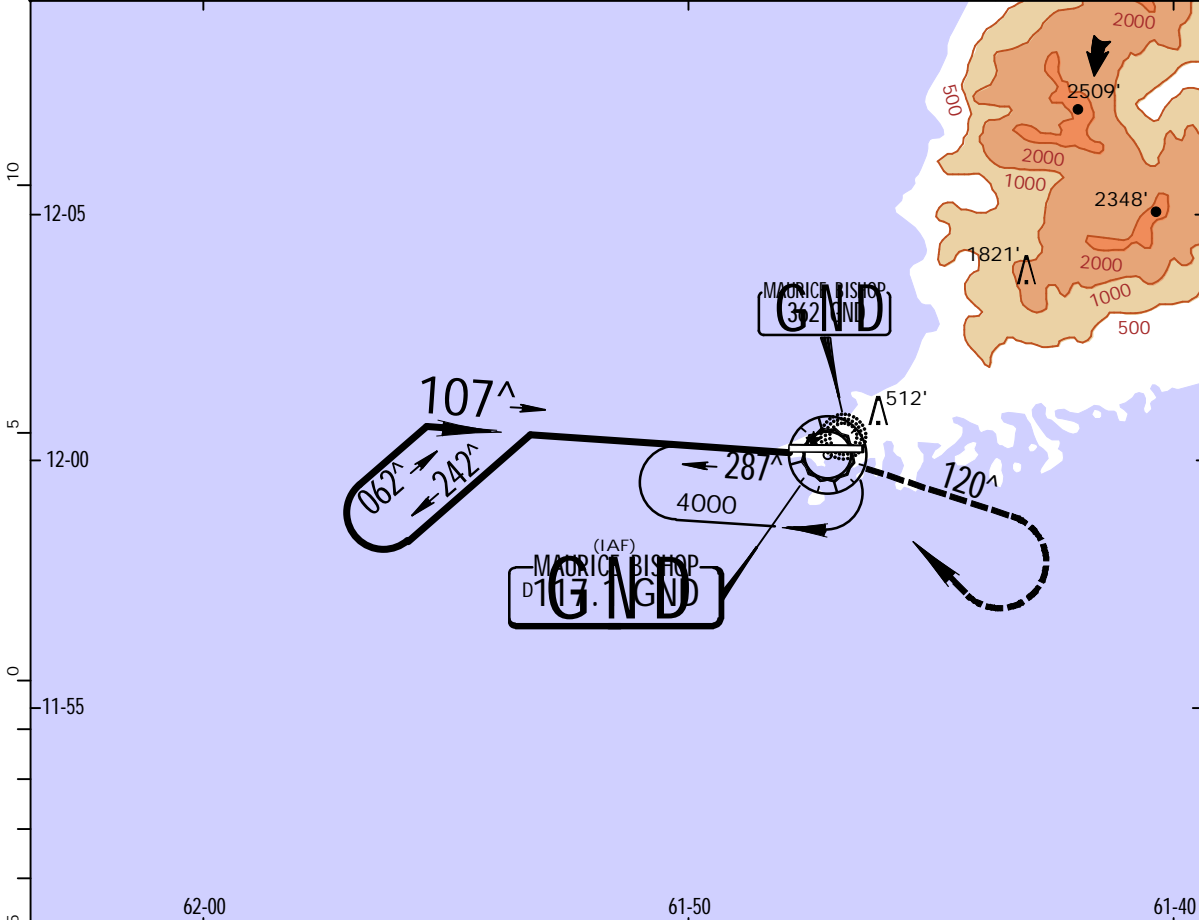
PANS OPS

TGPY/GND
MAURICE BISHOP INTL

JEPPESSEN
30 MAR 12 (13-2) .Eff.5.Apr.

ST GEORGES, GRENADA
VOR Rwy 10

*MAURICE BISHOP Approach		*MAURICE BISHOP Tower		*Ground	
119.4		118.9		121.9	
VOR GND 117.1	Final Apch Crs 107 [^]	No FAF	MDA(H) 640' (615')	Apt Elev 45' Rwy 10 25'	 4000' MSA GND VOR
MISSED APCH: Climbing RIGHT turn outbound on GND VOR R-120 to 2000', then climbing RIGHT turn to return to GND VOR at 4000' or as directed by ATC.					
Alt Set: hPa (IN on req) Rwy Elev: 1 hPa Trans level: By ATC Trans alt: 4000'					
1. CAUTION: High terrain north through east from airport.					



MAP at VOR	ALS	2000'	GND
	PAPI	RT	on 117.1
			R-120

STRAIGHT-IN LANDING RWY 10		CIRCLE-TO-LAND	
MDA(H) 640' (615')		Not Authorized North of Extended Centerline Rwy 10 Only	
ALS out		MDA(H)	
A	2800m	100	680'(635') - 2800m
B		135	
C		180	680'(635') - 3200m
D		205	

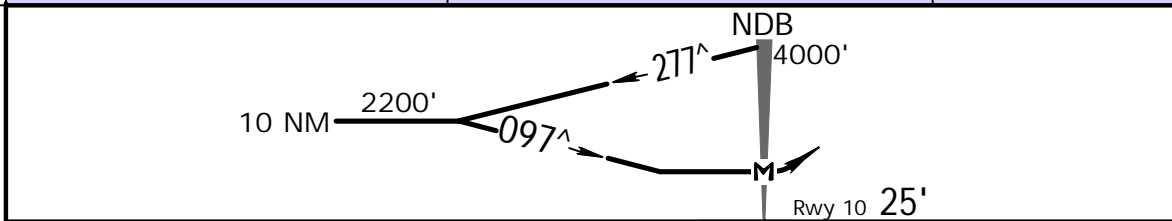
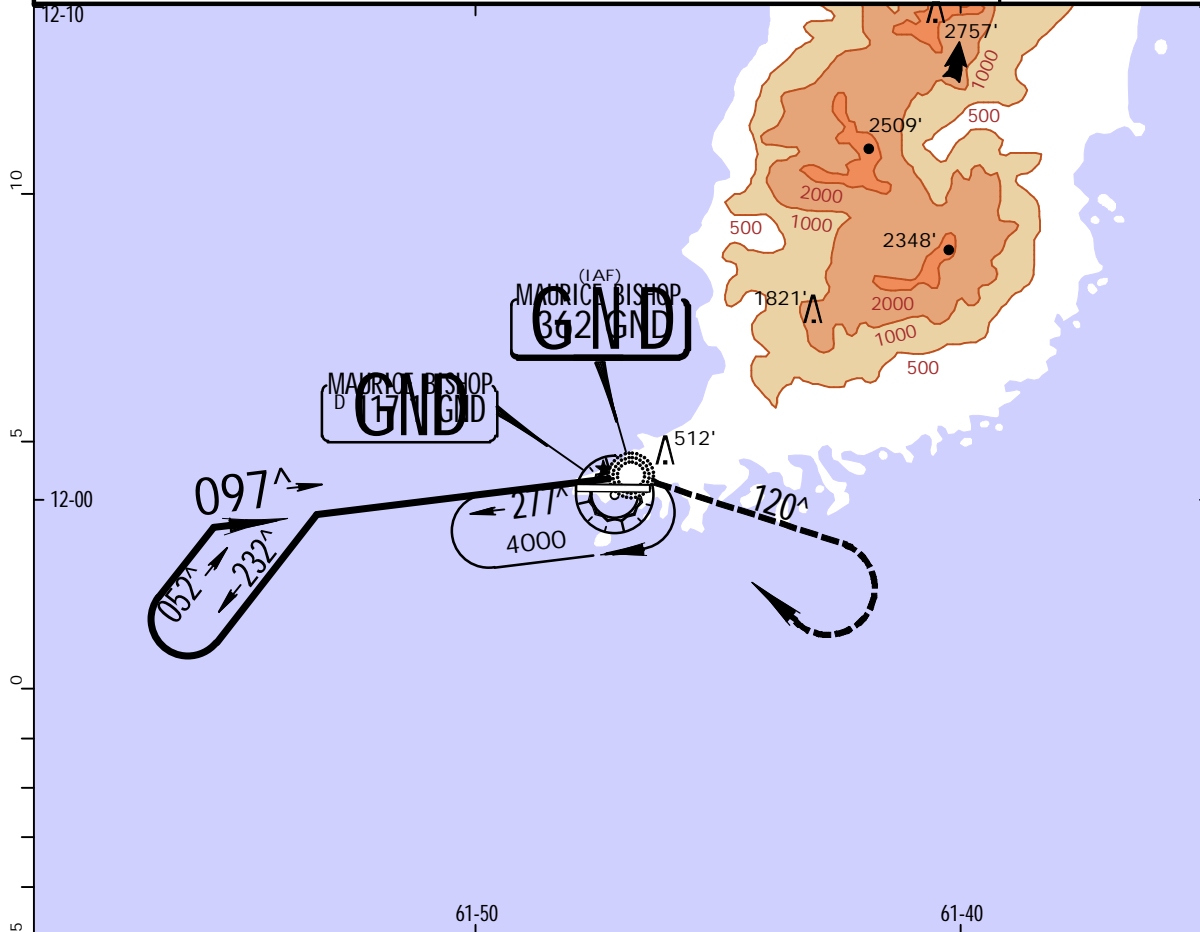
PANS OPS

TGPY/GND
MAURICE BISHOP INTL

JEPPESSEN
30 MAR 12 **(16-1)** .Eff. 5.Apr.

ST GEORGES, GRENADA
NDB Rwy 10

*MAURICE BISHOP Approach		*MAURICE BISHOP Tower		*Ground	
119.4		118.9		121.9	
NDB GND 362	Final Apch Crs 097[^]	No FAF	MDA(H) 700' (675')	Apt Elev 45' Rwy 10 25'	4000'
MISSED APCH: Climbing RIGHT turn on track 120 [^] to 2000', then climbing RIGHT turn to return to GND NDB at 4000', or as directed by ATC.					
Alt Set: hPa (IN on req) Rwy Elev: 1 hPa Trans level: By ATC Trans alt: 4000'					MSA GND VOR
1. CAUTION: High terrain north through east from airport.					



MAP at NDB	ALS	2000'	120 [^]	4000'	GND 362
	PAPI	RT	RT		

PANS OPS	STRAIGHT-IN LANDING RWY 10		Max Kts	CIRCLE-TO-LAND	
	MDA(H)	ALS out		MDA(H)	
A	700'(675')		100	760'(715')	1600m
B			135		
C			180	800'(755')	3600m
D			205	800'(755')	4000m

Chart changes since cycle 12-2015

ADD = added chart, REV = revised chart, DEL = deleted chart.

ACT PROCEDURE IDENT

INDEX

REV DATE

EFF DATE

ST GEORGES, (MAURICE BISHOP INTL - TGPY)

TERMINAL CHART CHANGE NOTICES

No Chart Change Notices for Airport TGPY