

List of pages in this Trip Kit

Trip Kit Index

Airport Information For TFFF

Terminal Charts For TFFF

Revision Letter For Cycle 13-2015

Change Notices

Notebook

General Information

Location: MARTINIQUE MTQ
ICAO/IATA: TFFF / FDF
Lat/Long: N 14 35.5 W 060 59.8
Elevation: 16 ft

Airport Use: Public
Daylight Savings: Not Observed
UTC Conversion: +4:00 = UTC
Magnetic Variation: 15.0° W

Fuel Types: 100 Octane (LL), Jet A-1
Customs: Yes
Airport Type: IFR
Landing Fee: Yes
Control Tower: Yes
Jet Start Unit: No
LLWS Alert: No
Beacon: Yes
Night VFR Capable

Sunrise: 0938 Z
Sunset: 2237 Z

Runway Information

Runway: 10
Length x Width: 9843 ft x 148 ft
Surface Type: tarmac
TDZ-Elev: 10 ft
Lighting: Edge
Stopway: 984 ft

Runway: 28
Length x Width: 9843 ft x 148 ft
Surface Type: tarmac
TDZ-Elev: 12 ft
Lighting: Edge
Displaced Threshold: 820 ft

Communication Information

ATIS: 127.850
Martinique Tower: 121.900

Martinique Tower: 118.500

Martinique Ground: 121.900

Martinique Approach: 121.000

Martinique Approach: 129.050

TFFF/FDF

JEPPESEN

MARTINIQUE, MARTINIQUE

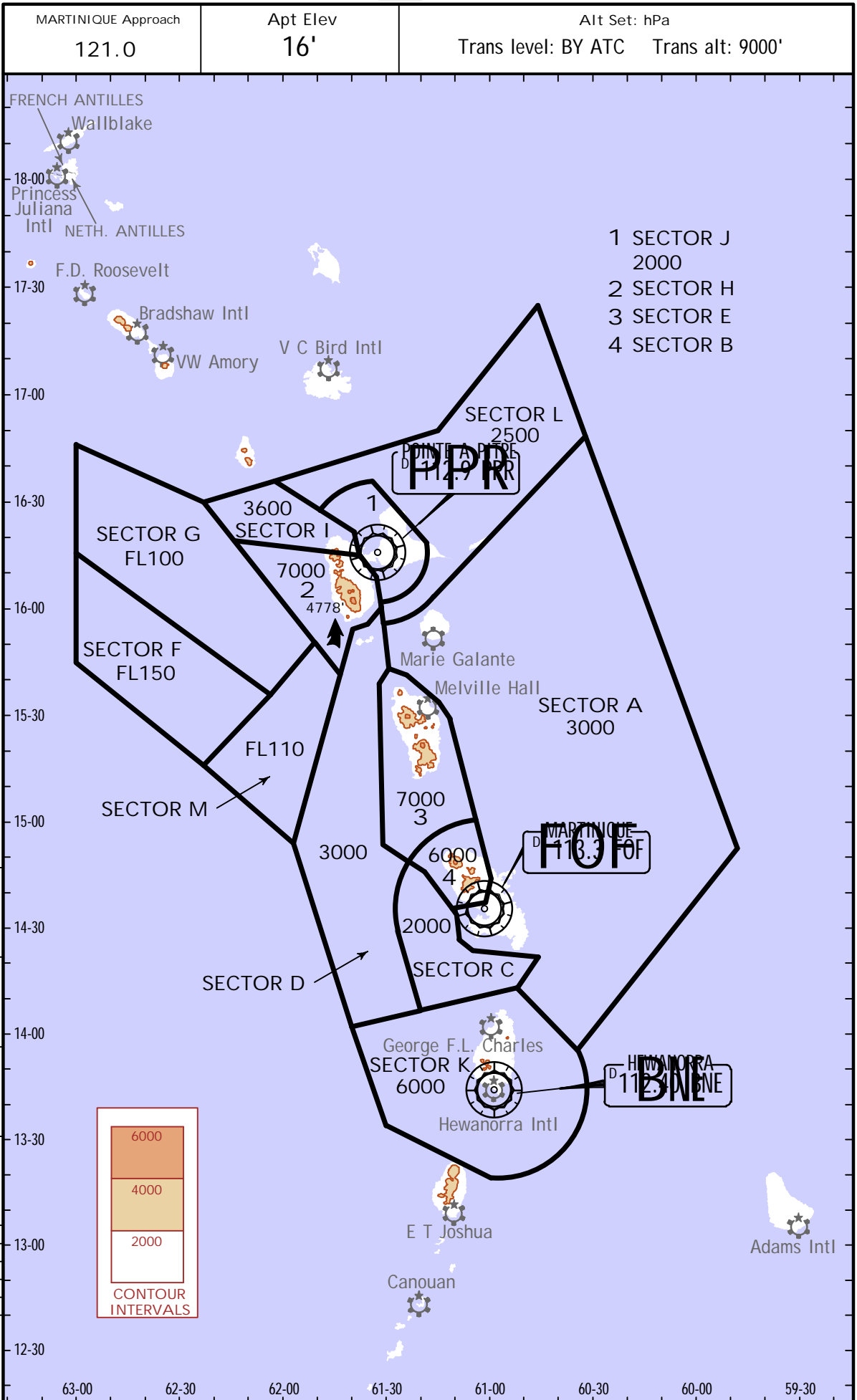
AIME CESAIRE

19 JUL 13

10-1R

.Eff.25.Jul.

.RADAR.MINIMUM.ALTITUDES.



TFFF/FDF

JEPPESEN

MARTINIQUE, MARTINIQUE

AIME CESAIRE

19 JUL 13

10-2

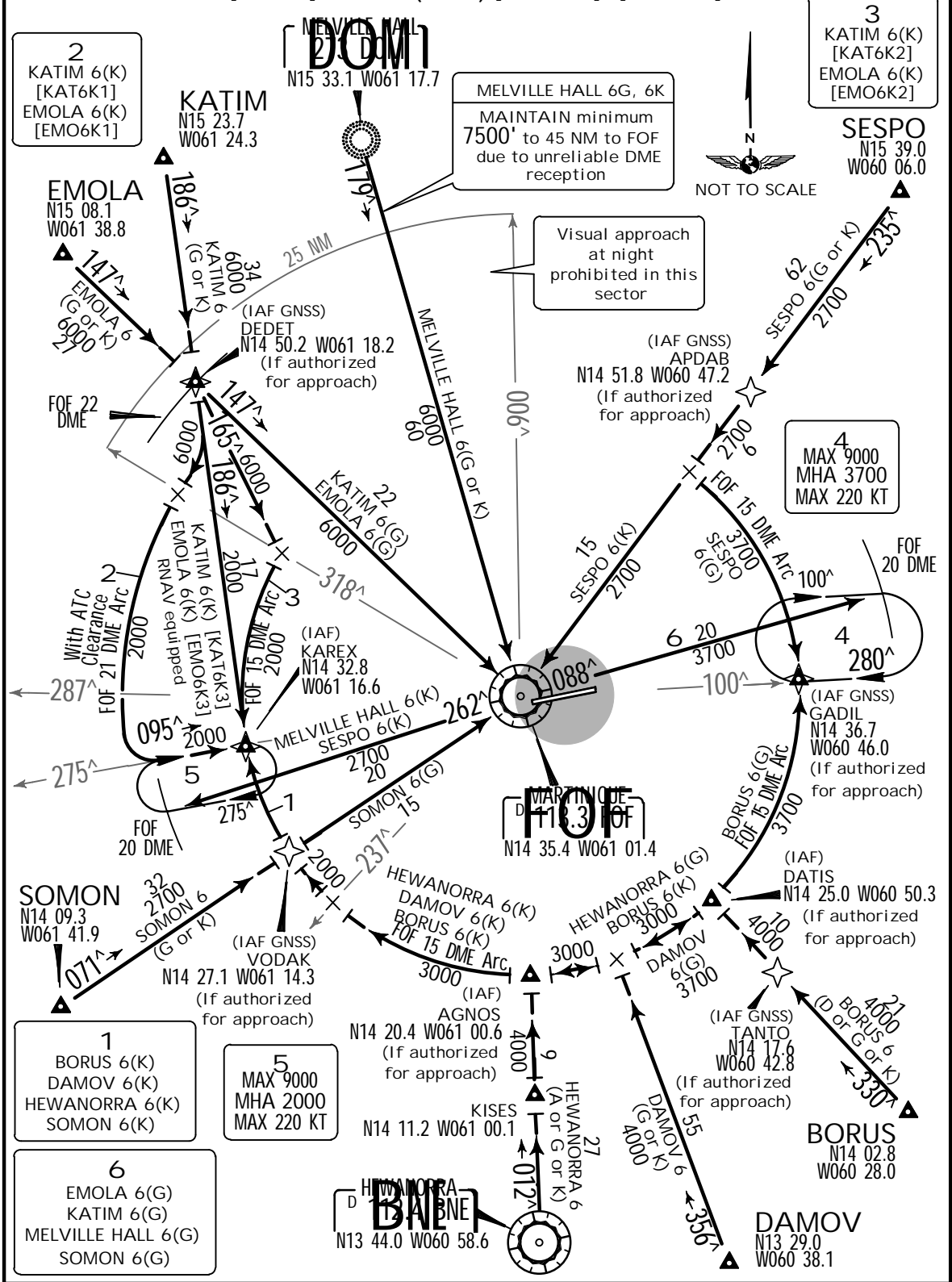
.Eff.25.Jul.

.STAR.

ATIS 127.85	Apt Elev 16'	Alt Set: hPa Trans level: By ATC Trans alt: 9000' 1. At night, visual approaches shall neither be started nor performed within an area bounded by radials 318° and 006° within a 25 NM radius from FOF. 2. At night, visual approaches shall not be approved until the aircraft has passed in descent the ceiling reported by the meteorological officer.
----------------	-----------------	---

ARRIVAL PROCEDURES

BORUS 6(D or G or K) [BORU6D], [BORU6G], [BORU6K], DAMOV 6(G or K) [DAMO6G], [DAMO6K], EMOLA 6(G or K) [EMOL6G], [EMO6K1], [EMO6K2], [EMO6K3], HEWANORRA 6(A or G or K) [BNE6A], [BNE6G], [BNE6K], KATIM 6(G or K) [KATI6G], [KAT6K1], [KAT6K2], [KAT6K3], MELVILLE HALL 6(G or K) [DOM6G], [DOM6K], SESPO 6(G or K) [SESP6G], [SESP6K], SOMON 6(G or K) [SOMO6G], [SOMO6K]



CHANGES: HEWANORRA and KATIM STAR distances.

JEPPESEN, 2005, 2013. ALL RIGHTS RESERVED.

TFFF/FDF
AIME CESAIRE

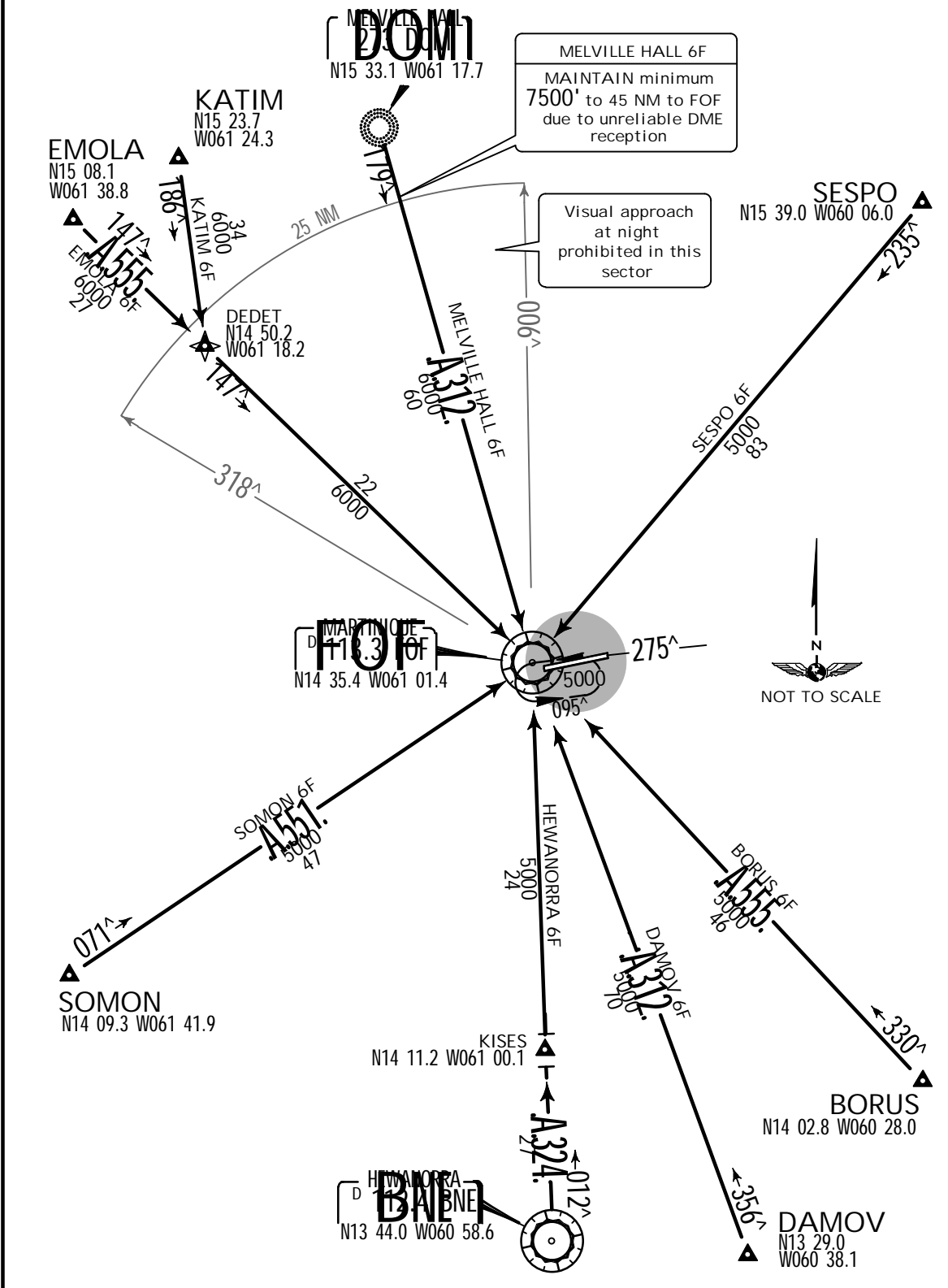
JEPPESSEN
19 JUL 13 (10-2A) .Eff.25.Jul.

MARTINIQUE, MARTINIQUE
.STAR.

ATIS 127.85	Apt Elev 16'	Alt Set: hPa Trans level: By ATC Trans alt: 9000' 1. At night, visual approaches shall neither be started nor performed within an area bounded by radials 318° and 006° within a 25 NM radius from FOF. 2. At night, visual approaches shall not be approved until the aircraft has passed in descent the ceiling reported by the meteorological officer.
----------------	-----------------	---

ARRIVAL PROCEDURES

BORUS 6F [BORU6F], DAMOV 6F [DAMO6F], EMOLA 6F [EMOL6F], HEWANORRA 6F [BNE6F], KATIM 6F [KATI6F], MELVILLE HALL 6F [DOM6F], SESPO 6F [SESP6F], SOMON 6F [SOMO6F]



TFFF/DFD
AIME CESAIRE

JEPPESEN
26 APR 13 **10-3**

MARTINIQUE, MARTINIQUE
.Eff.2.May. **.SID.**

Apt Elev 16'	Trans level: By ATC Trans alt: 9000' 1. Unless otherwise advised by ATC, aircraft must comply with the specifications fixed for each departure route. 2. Aircraft must MAINTAIN the theoretical minimum climb gradient for each departure route up to the MSA. If this is impossible, the pilot must advise the tower on the initial contact. 3. Rwy 10: Avoid overflight of the town of Ft de France.	<p>MSA FOF VOR</p>
-----------------	---	--------------------

BORUS 5E DEPARTURE [BORU5E] (RWY 10)

Direct distance from Aime Cesaire Apt to: BORUS 45 NM

This SID requires minimum climb gradients of:
 BORUS 5E: 6.9% up to MSA.
 RADAR: 6.9% until passing 3000'.
 Obstacle of 216', 3064' from DER bearing 119°, may be over flown visually at 5.9%.

Gnd speed-KT	75	100	150	200	250	300
5.9% V/V (fpm)	448	597	896	1195	1494	1792
6.9% V/V (fpm)	524	699	1048	1398	1747	2096

SID	INITIAL CLIMB
BORUS 5E	Join and follow FOF R-098. At 2000' or at D5 FOF, turn RIGHT track 179° to intercept FOF R-150.
RADAR	Climb track 098° until passing 3000'. EXPECT RADAR vectors to join SID.

BORUS 5W DEPARTURE [BORU5W] (RWY 28)

Direct distance from Aime Cesaire Apt to: BORUS 45 NM

This SID requires minimum climb gradients of:
 CAT A & B: 6.5% up to MSA.
 CAT C & D: 4.2% up to MSA.

Gnd speed-KT	75	100	150	200	250	300
4.2% V/V (fpm)	319	425	638	851	1063	1276
6.5% V/V (fpm)	494	658	987	1317	1646	1975

SID	INITIAL CLIMB
BORUS 5W	CAT A & B: Join and follow FOF R-273. At 1500' or D2 FOF, turn LEFT track 095° to intercept FOF R-150. CAT C & D: Join and follow FOF R-273. At 1500' or D6 FOF, turn LEFT track 095° to intercept FOF R-150.
RADAR	Climb track 273° until passing 3000'. EXPECT RADAR vectors to join SID.

TFFF/DFD
AIME CESAIRE

JEPPESEN
26 APR 13 (10-3A)

MARTINIQUE, MARTINIQUE
.SID.

Apt Elev 16'	Trans level: By ATC Trans alt: 9000' 1. Unless otherwise advised by ATC, aircraft must comply with the specifications fixed for each departure route. 2. Aircraft must MAINTAIN the theoretical minimum climb gradient for each departure route up to the MSA. If this is impossible, the pilot must advise the tower on the initial contact. 3. Rwy 10: Avoid overflight of the town of Ft de France.	<p>MSA FOF VOR</p>
-----------------	---	--------------------

EMOLA 5E DEPARTURE [EMOL5E] (RWY 10)

This SID requires minimum climb gradients of:
 EMOLA 5E: 6.9% up to MSA.
 RADAR: 6.9% until passing 3000'.
 Obstacle of 216', 3064' from DER bearing 119°, may be over flown visually at 5.9%.

Gnd speed-KT	75	100	150	200	250	300
5.9% V/V (fpm)	448	597	896	1195	1494	1792
6.9% V/V (fpm)	524	699	1048	1398	1747	2096

SID	INITIAL CLIMB
EMOLA 5E	Join and follow FOF R-098. At 2000' or at D5 FOF, turn RIGHT to intercept FOF R-142. After FOF follow FOF R-327 to EMOLA.
RADAR	Climb track 098° until passing 3000'. EXPECT RADAR vectors to join SID.

EMOLA 5W DEPARTURE [EMOL5W] (RWY 28)

This SID requires a minimum climb gradient of 5.2% up to MSA.

Gnd speed-KT	75	100	150	200	250	300
5.2% V/V (fpm)	395	527	790	1053	1317	1580

Direct distance from Aime Cesaire Apt to:
EMOLA 50 NM

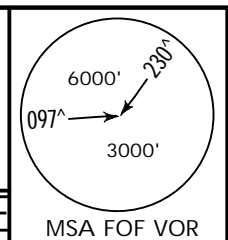
SID	INITIAL CLIMB
EMOLA 5W	Join and follow FOF R-273. At D6 FOF, turn RIGHT track 357° to intercept FOF R-327.
RADAR	Climb track 273° until passing 3000'. EXPECT RADAR vectors to join SID.

TFFF/FDF
AIME CESAIRE

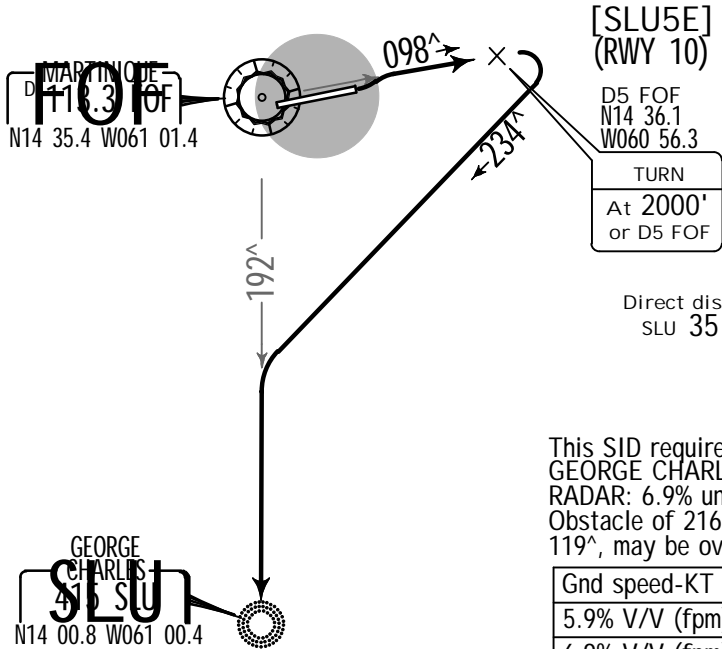
JEPPESEN
26 APR 13 (10-3B)

MARTINIQUE, MARTINIQUE
.SID.

Trans level: By ATC Trans alt: 9000'
1. Unless otherwise advised by ATC, aircraft must comply with the specifications fixed for each departure route.
2. Aircraft must MAINTAIN the theoretical minimum climb gradient for each departure route up to the MSA. If this is impossible, the pilot must advise the tower on the initial contact.
3. Rwy 10: Avoid overflight of the town of Ft de France.



GEORGE CHARLES 5E DEPARTURE



[SLU5E]
(RWY 10)
D5 FOF
N14 36.1
W060 56.3
TURN
At 2000'
or D5 FOF



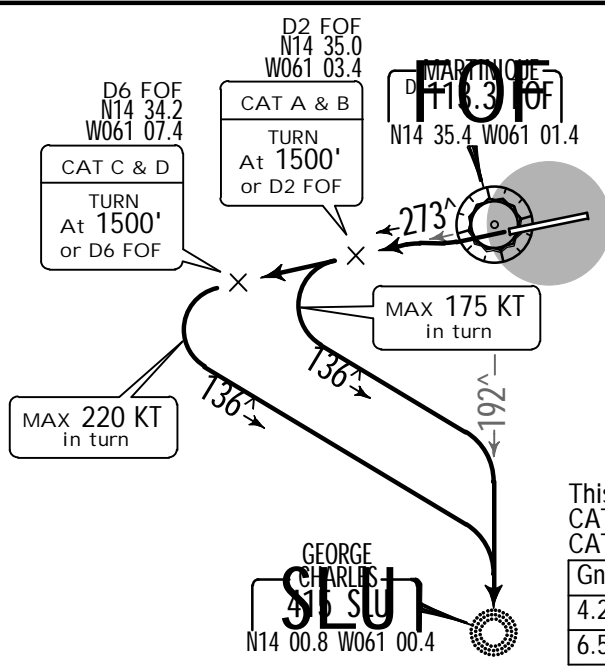
Direct distance from Aime Cesaire Apt to:
SLU 35 NM

This SID requires minimum climb gradients of:
GEORGE CHARLES 5E: 6.9% up to MSA.
RADAR: 6.9% until passing 3000'.
Obstacle of 216', 3064' from DER bearing 119°, may be over flown visually at 5.9%.

Gnd speed-KT	75	100	150	200	250	300
5.9% V/V (fpm)	448	597	896	1195	1494	1792
6.9% V/V (fpm)	524	699	1048	1398	1747	2096

SID	INITIAL CLIMB	
GEORGE CHARLES 5E	Join and follow FOF R-098. At intercept FOF R-192.	2000' or at D5 FOF, turn RIGHT track 234° to
RADAR	Climb track 098° until passing 3000'.	EXPECT RADAR vectors to join SID.

GEORGE CHARLES 5W DEPARTURE
[SLU5W]
(RWY 28)



Direct distance from Aime Cesaire Apt to:
SLU 35 NM

This SID requires minimum climb gradients of:
CAT A & B: 6.5% up to MSA.
CAT C & D: 4.2% up to MSA.

Gnd speed-KT	75	100	150	200	250	300
4.2% V/V (fpm)	319	425	638	851	1063	1276
6.5% V/V (fpm)	494	658	987	1317	1646	1975

SID	INITIAL CLIMB	
GEORGE CHARLES 5W	CAT A & B: Join and follow FOF R-273. At intercept FOF R-192.	1500' or D2 FOF, turn LEFT track 136° to
	CAT C & D: Join and follow FOF R-273. At intercept FOF R-192.	1500' or D6 FOF, turn LEFT track 136° to
RADAR	Climb track 273° until passing 3000'.	EXPECT RADAR vectors to join SID.

TFFF/FDF
AIME CESAIRE

JEPPESEN
26 APR 13 **10-3C**

MARTINIQUE, MARTINIQUE
.SID.

Apt Elev 16'	Trans level: By ATC Trans alt: 9000' 1. Unless otherwise advised by ATC, aircraft must comply with the specifications fixed for each departure route. 2. Aircraft must MAINTAIN the theoretical minimum climb gradient for each departure route up to the MSA. If this is impossible, the pilot must advise the tower on the initial contact. 3. Rwy 10: Avoid overflight of the town of Ft de France.	<p>MSA FOF VOR</p>
-----------------	---	--------------------

KATIM 5E DEPARTURE [KATI5E] (RWY 10)

Gnd speed-KT	75	100	150	200	250	300
5.9% V/V (fpm)	448	597	896	1195	1494	1792
6.9% V/V (fpm)	524	699	1048	1398	1747	2096

SID	INITIAL CLIMB
KATIM 5E	Join and follow FOF R-098. At 2000' or at D5 FOF, turn RIGHT to intercept FOF R-142. After FOF follow FOF R-327. At D20 FOF RNAV track 003° to KATIM.
RADAR	Climb track 098° until passing 3000'. EXPECT RADAR vectors to join SID.

KATIM 5W DEPARTURE [KATI5W] (RWY 28)

Gnd speed-KT	75	100	150	200	250	300
5.2% V/V (fpm)	395	527	790	1053	1317	1580

SID	INITIAL CLIMB
KATIM 5W	Join and follow FOF R-273. At D6 FOF, turn RIGHT track 357° to intercept FOF R-327. At D20 FOF RNAV track 003° to KATIM.
RADAR	Climb track 273° until passing 3000'. EXPECT RADAR vectors to join SID.

TFFF/FDF

JEPPESEN

MARTINIQUE, MARTINIQUE

AIME CESAIRE

26 APR 13

10-3D

Eff. 2.May.

.SID.

Apt Elev 16'	Trans level: By ATC Trans alt: 9000' 1. Unless otherwise advised by ATC, aircraft must comply with the specifications fixed for each departure route. 2. Aircraft must MAINTAIN the theoretical minimum climb gradient for each departure route up to the MSA. If this is impossible, the pilot must advise the tower on the initial contact. 3. Rwy 10: Avoid overflight of the town of Ft de France.	<p>MSA FOF VOR</p>
-----------------	---	--------------------

POINTE
PPR
D 11.9
N16 15.9 W061 32.4

MARTINIQUE
FOF
D 11.3
N14 35.4 W061 01.4

LIDOS
(280° bearing to DOM)
N15 34.0
W061 04.5

MARTINIQUE
FOF
D 11.3
N14 35.4 W061 01.4

D6 FOF
N14 36.2
W061 55.2

LIDOS 5E DEPARTURE [LIDO5E] (RWY 10)

Direct distance from Aime Cesaire Apt to:
LIDOS 58 NM

This SID requires minimum climb gradients of:
 LIDOS 5E: 6.9% up to MSA.
 RADAR: 6.9% until passing 3000'.
 Obstacle of 216', 3064' from DER bearing 119°, may be over flown visually at 5.9%.

Gnd speed-KT	75	100	150	200	250	300
5.9% V/V (fpm)	448	597	896	1195	1494	1792
6.9% V/V (fpm)	524	699	1048	1398	1747	2096

SID	INITIAL CLIMB
LIDOS 5E	Mandatory connection TFFF-TFFR. Join and follow FOF R-098. At 2000' or at D6 FOF, turn LEFT track 332° to intercept FOF R-012.
RADAR	Climb track 098° until passing 3000'. EXPECT RADAR vectors to join SID.

POINTE
PPR
D 11.9
N16 15.9 W061 32.4

MARTINIQUE
FOF
D 11.3
N14 35.4 W061 01.4

LIDOS
(280° bearing to DOM)
N15 34.0
W061 04.5

MARTINIQUE
FOF
D 11.3
N14 35.4 W061 01.4

D6 FOF
N14 36.2
W061 55.2

LIDOS 5N [LIDO5N], LIDOS 5W [LIDO5W] DEPARTURES (RWY 28)

Direct distance from Aime Cesaire Apt to:
LIDOS 58 NM

These SIDs require minimum climb gradients of:
 LIDOS 5N: 8.2% up to MSA.
 LIDOS 5W: 4.2% up to MSA.

Gnd speed-KT	75	100	150	200	250	300
4.2% V/V (fpm)	319	425	638	851	1063	1276
8.2% V/V (fpm)	623	830	1246	1661	2076	2491

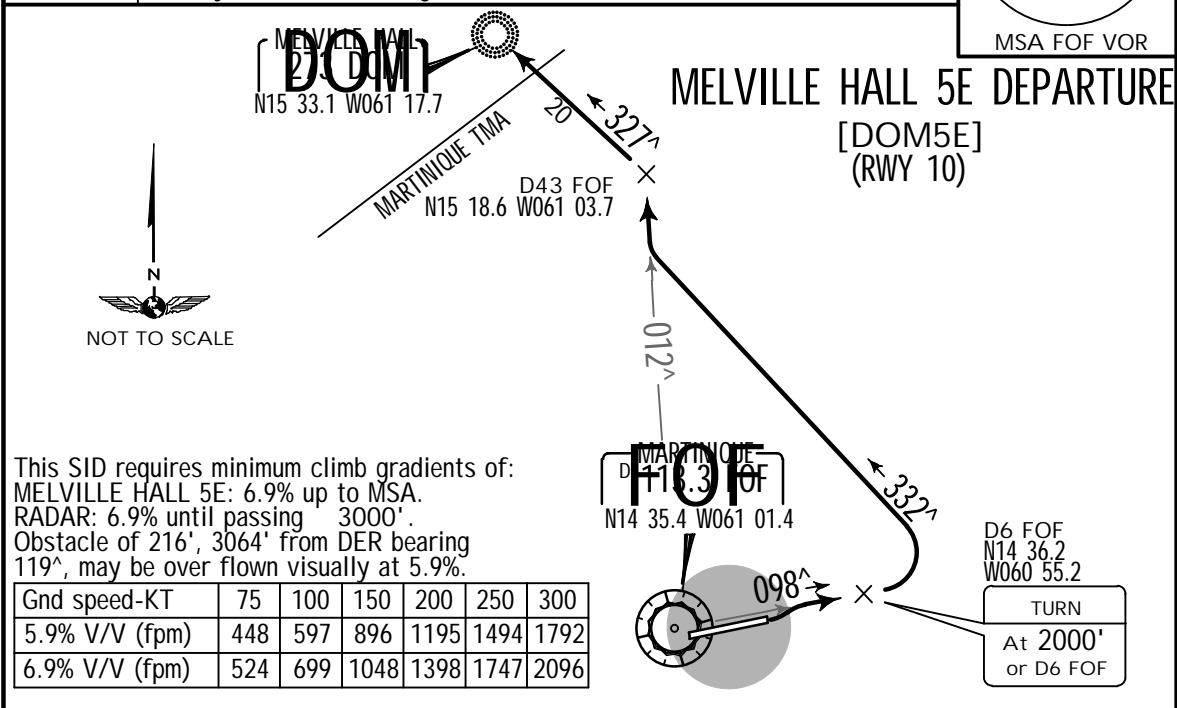
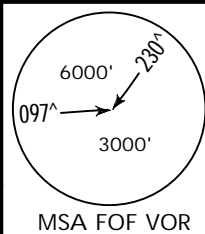
SID	INITIAL CLIMB
LIDOS 5N	Mandatory connection TFFF-TFFR. Join and follow FOF R-273. At D6 FOF turn RIGHT track 070° to intercept FOF R-012.
LIDOS 5W	Mandatory connection TFFF-TFFR. Join and follow FOF R-273. At 1500' or at D6 FOF, turn LEFT on FOF R-238. After FOF follow FOF R-012.
RADAR	Climb track 273° until passing 3000'. EXPECT RADAR vectors to join SID.

TTTT/FFD
AIME CESAIRE

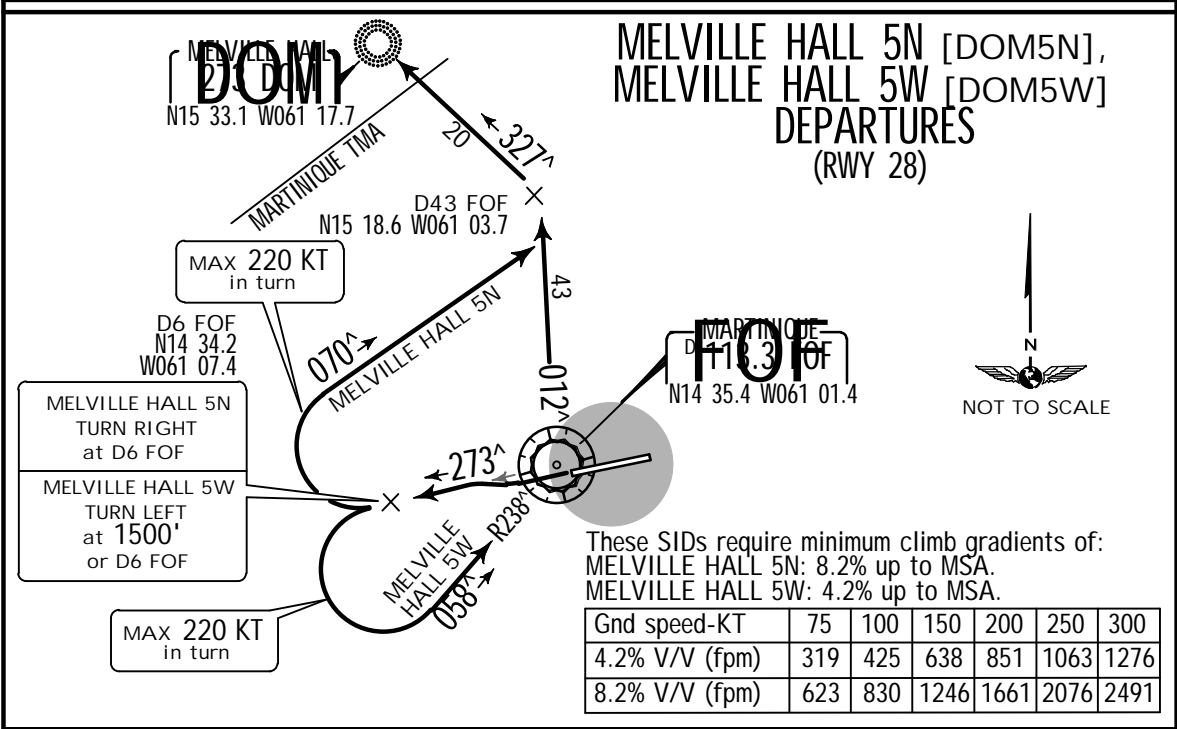
JEPPESEN
26 APR 13 (10-3E)

MARTINIQUE, MARTINIQUE
.SID.

Trans level: By ATC Trans alt: 9000'
1. Unless otherwise advised by ATC, aircraft must comply with the specifications fixed for each departure route.
2. Aircraft must MAINTAIN the theoretical minimum climb gradient for each departure route up to the MSA. If this is impossible, the pilot must advise the tower on the initial contact.
3. Rwy 10: Avoid overflight of the town of Ft de France.



SID	INITIAL CLIMB
MELVILLE HALL 5E	Join and follow FOF R-098. At 2000' or at D6 FOF, turn LEFT track 332° to intercept FOF R-012. At D43 FOF turn LEFT bearing 327° to DOM.
RADAR	Climb track 098° until passing 3000'. EXPECT RADAR vectors to join SID.



SID	INITIAL CLIMB
MELVILLE HALL 5N	Join and follow FOF R-273. At D6 FOF turn RIGHT track 070° to intercept FOF R-012. At D43 FOF, turn LEFT and follow 327° bearing to DOM.
MELVILLE HALL 5W	Join and follow FOF R-273. At 1500' or at D6 FOF, turn LEFT on FOF R-238. After FOF, follow FOF R-012. At D43 FOF, turn LEFT and follow 327° bearing to DOM.
RADAR	Climb track 273° until passing 3000'. EXPECT RADAR vectors to join SID.

TFFF/DFD
AIME CESAIRE

JEPPESEN
26 APR 13 10-3F

MARTINIQUE, MARTINIQUE
.SID.

Apt Elev 16'	Trans level: By ATC Trans alt: 9000' 1. Unless otherwise advised by ATC, aircraft must comply with the specifications fixed for each departure route. 2. Aircraft must MAINTAIN the theoretical minimum climb gradient for each departure route up to the MSA. If this is impossible, the pilot must advise the tower on the initial contact. 3. Rwy 10: Avoid overflight of the town of Ft de France.	<p>MSA FOF VOR</p>
-----------------	---	--------------------

SESPO 5E DEPARTURE [SESP5E] (RWY 10)

Direct distance from Aime Cesaire Apt to:
SESPO 82 NM

This SID requires minimum climb gradients of:
 SESPO 5E: 6.9% up to MSA.
 RADAR: 6.9% until passing 3000'.
 Obstacle of 216', 3064' from DER bearing 119°, may be over flown visually at 5.9%.

Gnd speed-KT	75	100	150	200	250	300
5.9% V/V (fpm)	448	597	896	1195	1494	1792
6.9% V/V (fpm)	524	699	1048	1398	1747	2096

SID	INITIAL CLIMB	
SESPO 5E	Join and follow FOF R-098. At intercept FOF R-055.	2000' or at D6 FOF, turn LEFT track 019° to
RADAR	Climb track 098° until passing 3000'. EXPECT RADAR vectors to join SID.	

SESPO 5W DEPARTURE [SESP5W] (RWY 28)

Direct distance from Aime Cesaire Apt to:
SESPO 83 NM

This SID requires a minimum climb gradient of 4.2% up to MSA.

Gnd speed-KT	75	100	150	200	250	300
4.2% V/V (fpm)	319	425	638	851	1063	1276

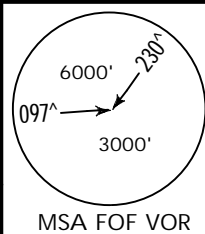
SID	INITIAL CLIMB	
SESPO 5W	Join and follow FOF R-273. At R-238. After FOF, follow FOF R-055.	1500' or at D6 FOF, turn LEFT along FOF
RADAR	Climb track 273° until passing 3000'. EXPECT RADAR vectors to join SID.	

TFFF/DFD
AIME CESAIRE

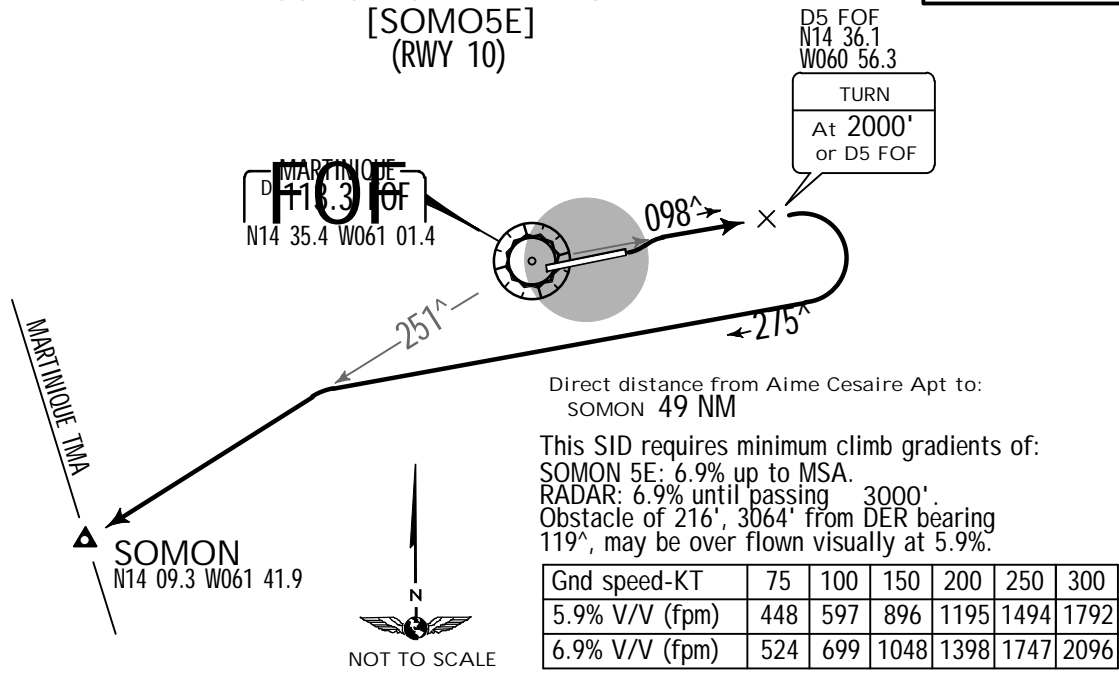
JEPPESEN
26 APR 13 (10-3G)

MARTINIQUE, MARTINIQUE
.SID.

Trans level: By ATC Trans alt: 9000'
 1. Unless otherwise advised by ATC, aircraft must comply with the specifications fixed for each departure route.
 2. Aircraft must MAINTAIN the theoretical minimum climb gradient for each departure route up to the MSA. If this is impossible, the pilot must advise the tower on the initial contact.
 3. Rwy 10: Avoid overflight of the town of Ft de France.

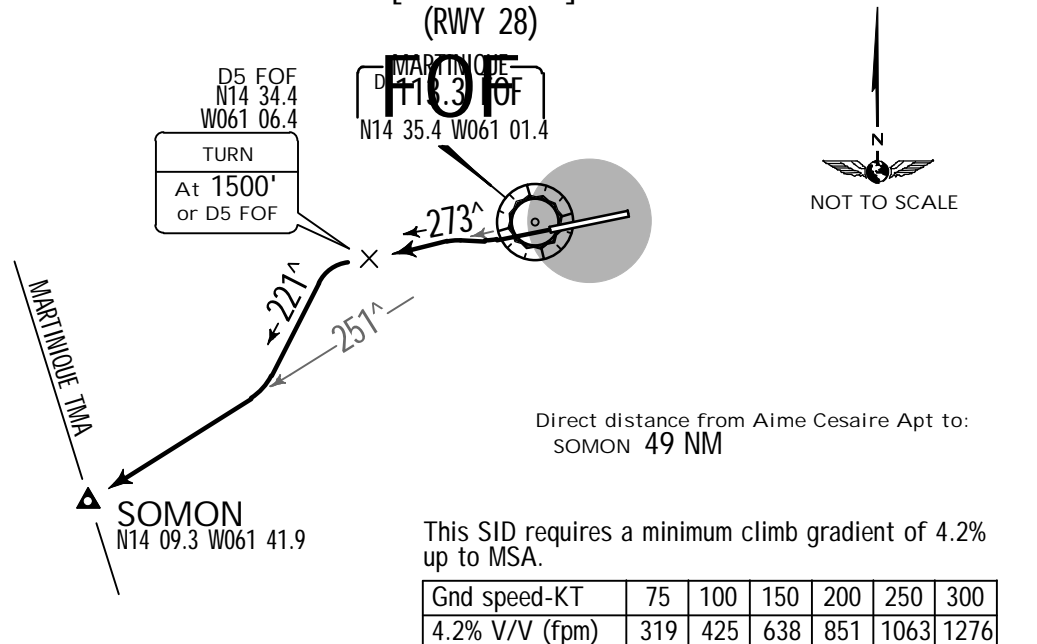


SOMON 5E DEPARTURE
[SOMO5E]
(RWY 10)



SID	INITIAL CLIMB	
SOMON 5E	Join and follow FOF R-098. At 2000' or at D5 FOF, turn RIGHT track 275° to intercept FOF R-251.	
RADAR	Climb track 098° until passing 3000'. EXPECT RADAR vectors to join SID.	

SOMON 5W DEPARTURE
[SOMO5W]
(RWY 28)



SID	INITIAL CLIMB	
SOMON 5W	Join and follow FOF R-273. At 1500' or D5 FOF, turn LEFT track 221° to intercept FOF R-251.	
RADAR	Climb track 273° until passing 3000'. EXPECT RADAR vectors to join SID.	

TFFF/EDF

Apt Elev 16
N14 35.5 W060 59.8

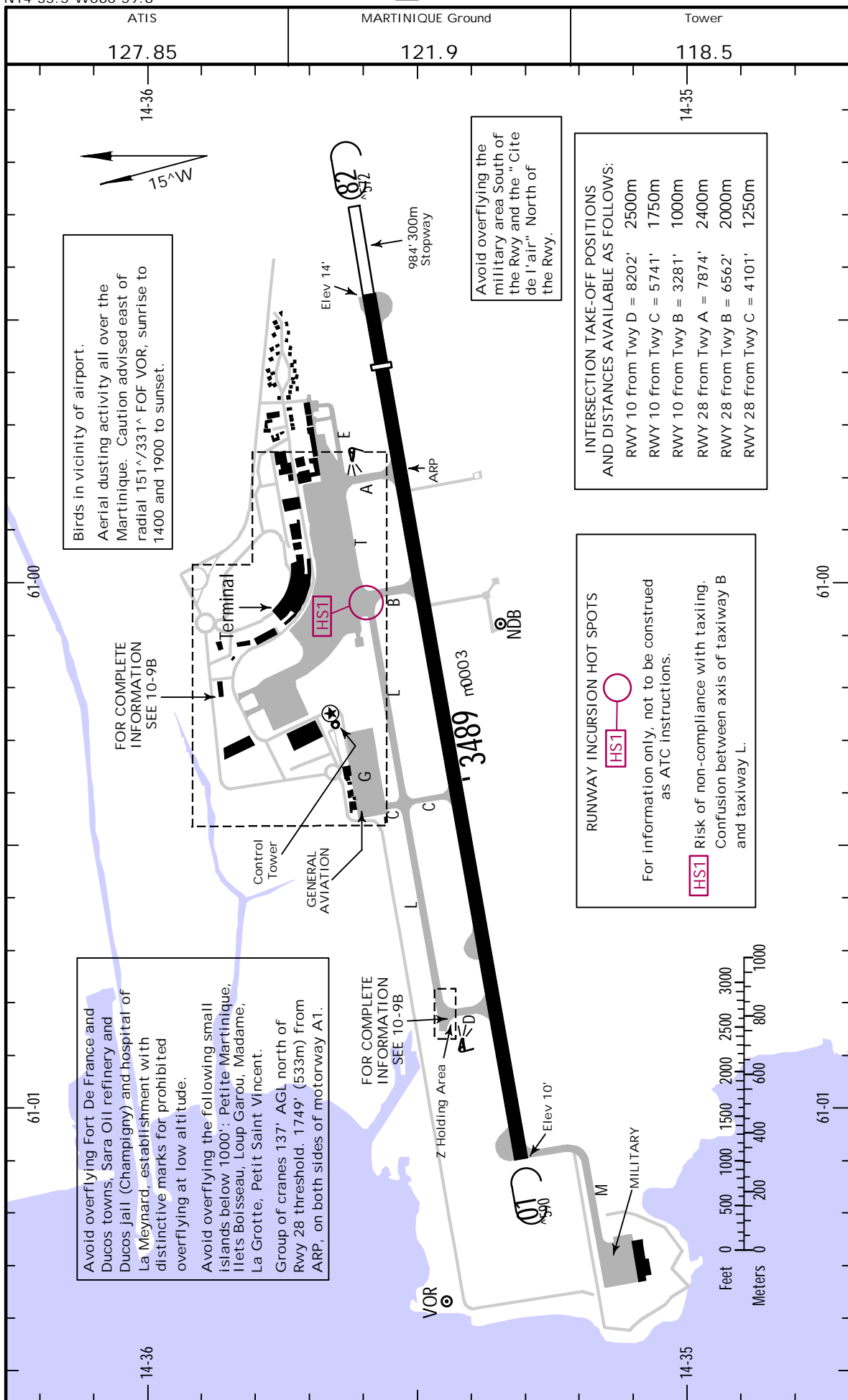
JEPPesen

MARTINIQUE, MARTINIQUE

29 AUG 14

10-9

AIME CESAIRE



Birds in vicinity of airport.
Aerial dusting activity all over the Martinique. Caution advised east of radial 151°/331° FOF VOR, sunrise to 1400 and 1900 to sunset.

Avoid overflying the military area South of the Rwy and the "Cite de l'air" North of the Rwy.

INTERSECTION TAKE-OFF POSITIONS AND DISTANCES AVAILABLE AS FOLLOWS:
 RWY 10 from Twy D = 8202' 2500m
 RWY 10 from Twy C = 5741' 1750m
 RWY 10 from Twy B = 3281' 1000m
 RWY 28 from Twy A = 7874' 2400m
 RWY 28 from Twy B = 6562' 2000m
 RWY 28 from Twy C = 4101' 1250m

RUNWAY INCURSION HOT SPOTS
 For information only, not to be construed as ATC instructions.
 Risk of non-compliance with taxiing. Confusion between axis of taxiway B and taxiway L.

Avoid overflying Fort De France and Ducos towns, Sara Oil refinery and Ducos jail (Champigny) and hospital of La Meynard, establishment with distinctive marks for prohibited overflying at low altitude.
 Avoid overflying the following small islands below 1000': Petite Martinique, Ilets Boisseau, Loup Garou, Madame, La Grotte, Petit Saint Vincent.
 Group of cranes 137' AGL north of Rwy 28 threshold. 1749' (533m) from ARP, on both sides of motorway A1.

FOR COMPLETE INFORMATION SEE 10-9B

TFFF/FDF



MARTINIQUE, MARTINIQUE

29 AUG 14 (10-9A)

AIME CESAIRE

GENERAL

CAUTION: Wildlife strike hazard.
 CAUTION: There is a risk of dog intrusion onto the airport grounds and runway.
 Two-way radio required.
 Glider activity south of island.
 General aviation parking authorized for non home-based jet engine planes and helicopters with a maximum length and wingspan of 46' (14m) and a maximum weight less than 7 tons.
 For safety reasons, propellers must be shut down during stops.
 Avoid overflying military area in the south of Rwy and the city of air in the north of Rwy.

The following procedures are intended for avoiding excessive noise on and in the vicinity of the airport:
 For all aircraft, avoid overflying the FORT DE FRANCE-SCHOELCHER sector. It is prohibited below 3000' AGL.

Overflying the towns of SAINT ESPRIT, DUCOS and LAMENTIN is prohibited below 1500' AGL for single piston engine aircraft, and 3000' AGL for turbine aircraft.

ADDITIONAL RUNWAY INFORMATION

RWY					USABLE LENGTHS		WIDTH
					LANDING BEYOND		
				Threshold	Glide Slope	TAKE-OFF	
10 1	HIRL	REIL	PAPI-L (angle 3.0^)	RVR		8694' 2650m	148'
28	HIRL	REIL	PAPI-L (angle 3.5^)	RVR	9022' 2750m		45m

1 Turnaround area restricted to aircraft with a turn radius lower than 131' (40m).

--	--	--	--	--	--	--	--

--	--	--	--	--	--	--	--

--	--	--	--	--	--	--	--

--	--	--	--	--	--	--	--

..Standard..				TAKE-OFF			
				All Rwys			
A				RVR 550m			
B							
C							
D							

--	--	--	--	--	--	--	--

TFFF/FDF

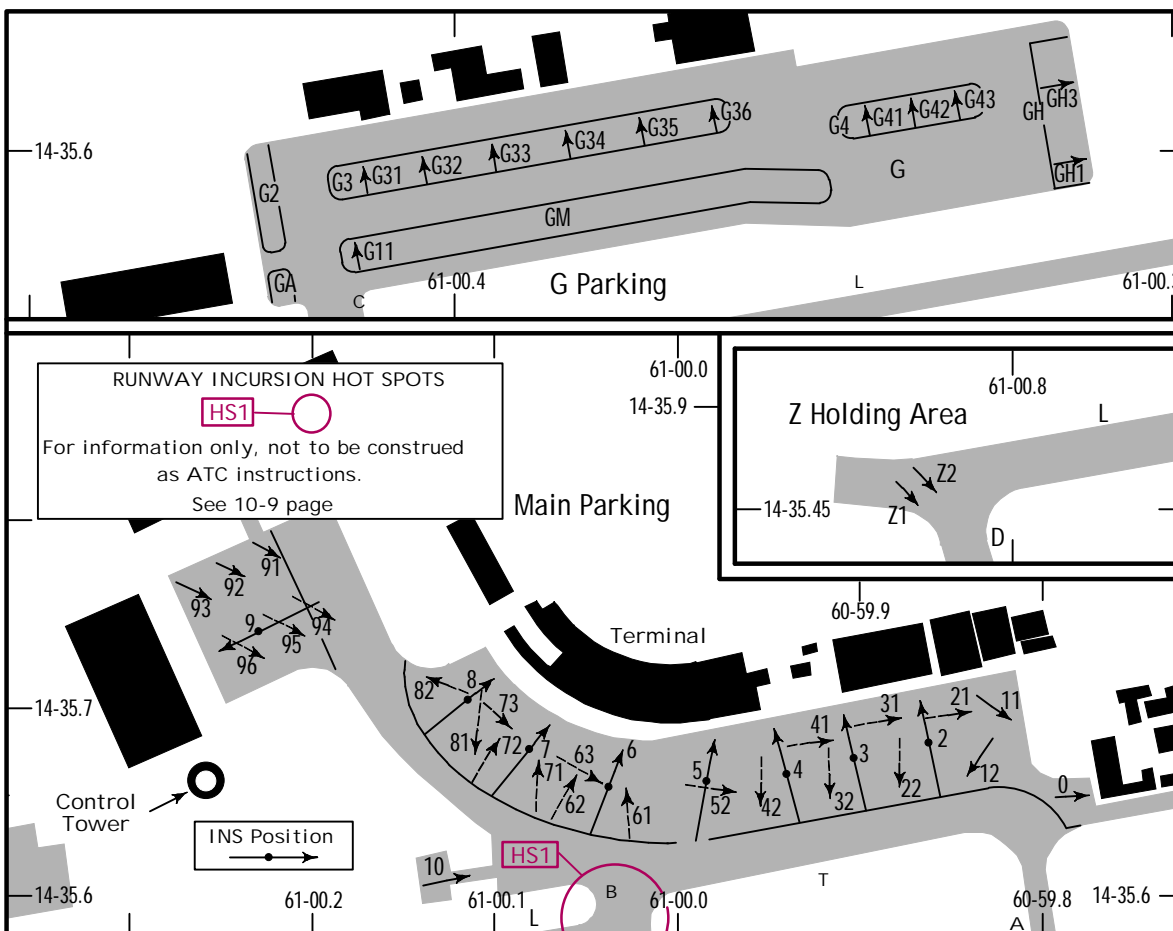
JEPPESEN

MARTINIQUE, MARTINIQUE

4 JUL 14

10-9B

AIME CESAIRE



MAX AIRCRAFT SIZE FOR G PARKING & Z HOLDING AREA

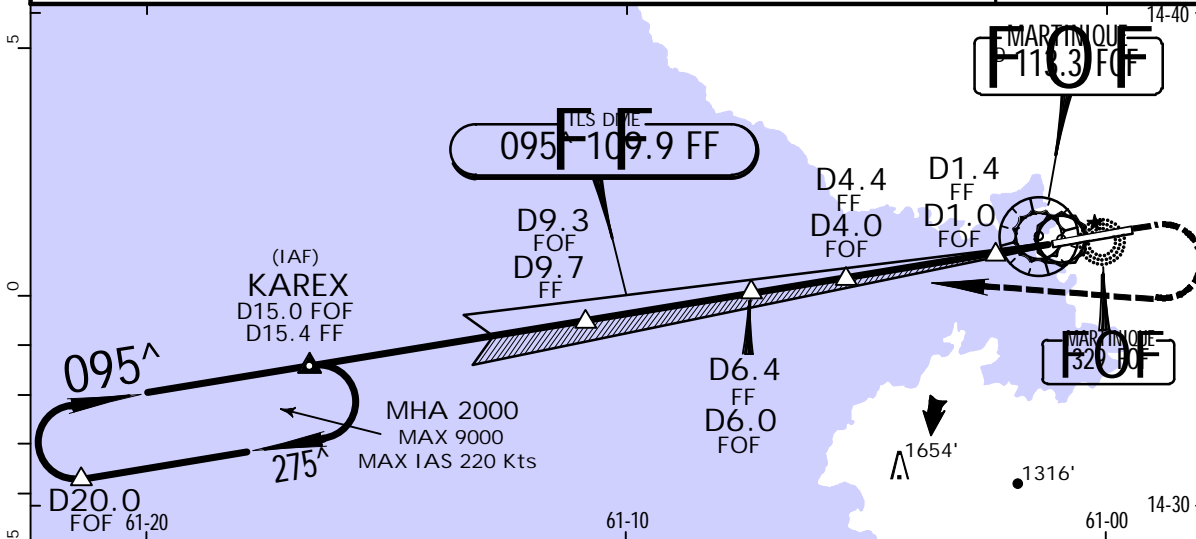
SPOT NO.	AIRCRAFT CLASS & SIZE LIMITS
AREA G3	
G31 thru 35	Class A- max wingspan 46' (14m), max acft length 49' (15m)
G36	Class A- max wingspan 35' (10.67m), max acft length 27' (8.23m)
AREA G4	
G41 thru G43	Class A- max wingspan 36' (11m), max acft length 38' (11.5m)
AREA GM	
G11	Class A- max wingspan 46' (14m), max acft length 52' (16m)
Z HOLDING AREA	
Z1, Z2	Class A- max wingspan 81' (24.57m), max acft length 74' (22.67m)

TFFF/FDF
AIME CESAIRE

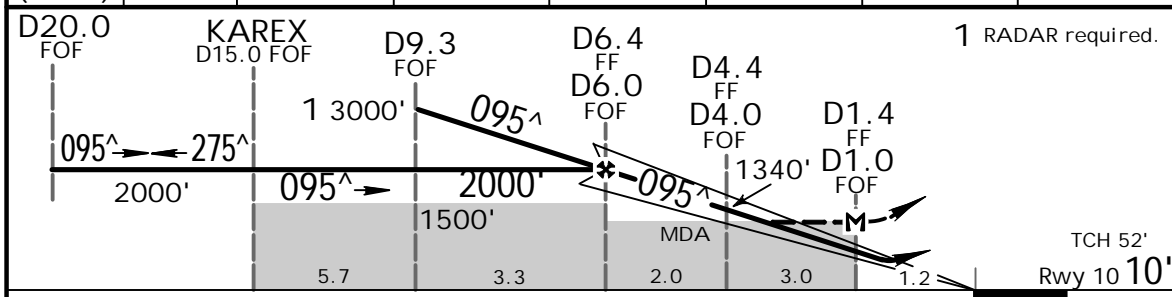
JEPPESSEN
2 AUG 13 (11-1)

MARTINIQUE, MARTINIQUE
ILS Z or LOC Z Rwy 10

ATIS 127.85		MARTINIQUE Approach 121.0		MARTINIQUE Tower 118.5		Ground 121.9	
LOC FF 109.9	Final Apch Crs 095 [^]	Minimum Alt D6.4 FF D6.0 FOF 2000' (1990')	ILS DA(H) Refer to Minimums	Apt Elev 16' Rwy 10 10'			
MISSED APCH: Climb STRAIGHT AHEAD. At 2500' turn RIGHT to intercept and follow outbound FOF VOR R-275 to KAREX/D15.0 FOF climbing to 3000'. Do not turn before FOF VOR. Climb to 2500' prior to level acceleration.							MSA FOF VOR
Alt Set: hPa		Rwy Elev: 0 hPa		Trans level: By ATC		Trans alt: 9000'	
1. VOR and DME required.							



LOC (GS out)	FF DME	6.0	5.0	4.0	3.0	2.0	1.0
	ALTITUDE	1870'	1540'	1210'	880'	550'	220'
LOC (GS out)	FOF DME	6.0	5.0	4.0	3.0	2.0	1.0
	ALTITUDE	2000'	1670'	1340'	1010'	680'	350'



Gnd speed-Kts	70	90	100	120	140	160	2500'	REIL PAPI-L	FOF 113.3 R-275
ILS GS 3.00 [^]	372	478	531	637	743	849			
MAP at D1.4 FF/D1.0 FOF	FAF to MAP 5.0	4:17	3:20	3:00	2:30	2:09	1:53		

..Standard..			STRAIGHT-IN LANDING RWY 10			CIRCLE-TO-LAND		
Missed Apch climb gradient mim 4.0%		Missed Apch climb gradient mim 3.0%		Missed Apch climb gradient mim 2.5%		LOC (GS out) CDFA		
DA(H) 210' (200')		DA(H) A: 280' (270') B: 300' (290') C: 310' (300') D: 330' (320')		DA(H) A: 470' (460') B: 480' (470') C: 490' (480') D: 500' (490')		1 DA/MDA(H) A: 690' (680') B: 710' (700') C: 730' (720') D: 750' (740')		
RVR 1200m		RVR 1300m		RVR 1500m		Not Authorized at Night		
RVR 1200m		RVR 1400m		RVR 2200m		Max Kts MDA(H) VIS		
RVR 1200m		RVR 1400m		RVR 2400m		110 800'(784') 1500m		
RVR 1200m		RVR 1400m		RVR 2300m		135 1070'(1054') 1600m		
RVR 1200m		RVR 1400m		RVR 2300m		180 1660'(1644') 2400m		
RVR 1200m		RVR 1400m		RVR 2300m		205 1990'(1974') 3600m		
1 For add-on to the MDA(H), see ATC pages FRENCH ANTILLES.								

TFFF/FDF

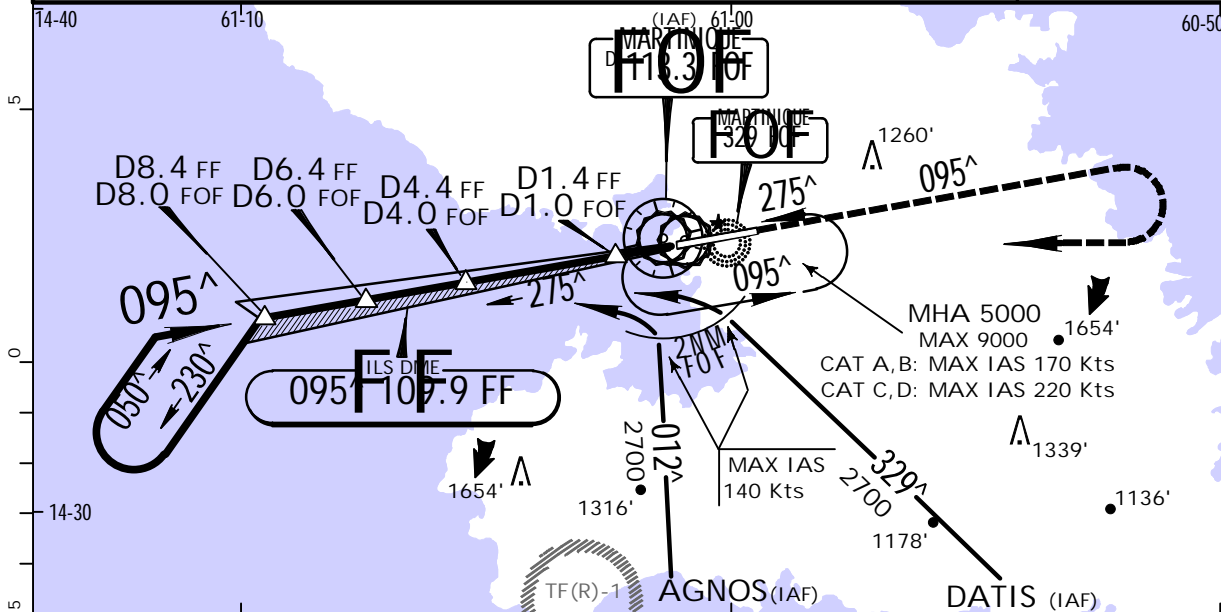


MARTINIQUE, MARTINIQUE
ILS Y or LOC Y Rwy 10

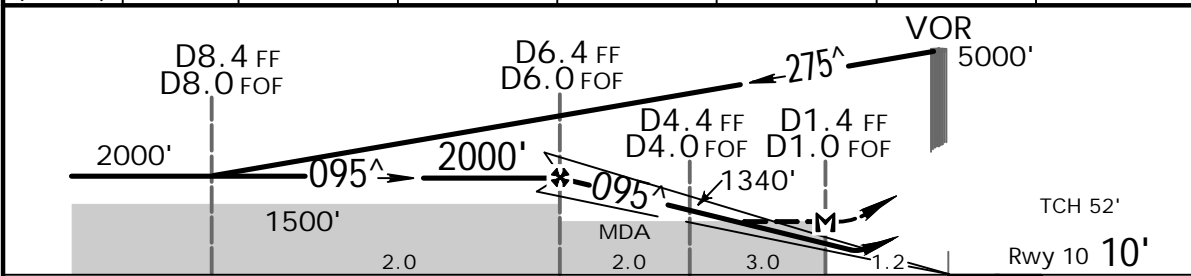
AIME CESAIRE

2 AUG 13 (11-2)

BRIEFING STRIP™	ATIS 127.85		MARTINIQUE Approach 121.0		MARTINIQUE Tower 118.5		Ground 121.9	
	LOC FF 109.9	Final Apch Crs 095 [^]	Minimum Alt D6.4 FF D6.0 FOF 2000' (1990')		ILS DA(H) Refer to Minimums	Apt Elev 16' Rwy 10 10'		
	MISSED APCH: Climb STRAIGHT AHEAD to 2500', turn RIGHT to join the holding pattern at FOF VOR climbing to 5000'. Do not turn before FOF VOR. Climb to 2500' prior to level acceleration.							MSA FOF VOR
Alt Set: hPa		Rwy Elev: 0 hPa		Trans level: By ATC		Trans alt: 9000'		



LOC (GS out)	FF DME	6.0	5.0	4.0	3.0	2.0	1.0
	ALTITUDE	1870'	1540'	1210'	880'	550'	220'
LOC (GS out)	FOF DME	6.0	5.0	4.0	3.0	2.0	1.0
	ALTITUDE	2000'	1670'	1340'	1010'	680'	350'



Gnd speed-Kts	70	90	100	120	140	160	REIL	2500'	5000'	FOF	
ILS GS 3.00 [^]	372	478	531	637	743	849					PAPI-L
MAP at D1.4 FF/D1.0 FOF	FAF to MAP 5.0		4:17	3:20	3:00	2:30	2:09	1:53			

PANS OPS	..Standard..			STRAIGHT-IN LANDING RWY 10		CIRCLE-TO-LAND	
	Missed Apch climb gradient min 4.0%	ILS		LOC (GS out)		Not Authorized at Night	
		Missed Apch climb gradient min 3.0%		CDFA			
		DA(H)		1 DA/MDA(H)			
		A: 280' (270')	A: 470' (460')	B: 690' (680')			
B: 300' (290')	B: 480' (470')	B: 710' (700')					
C: 310' (300')	C: 490' (480')	C: 730' (720')					
D: 330' (320')	D: 500' (490')	D: 750' (740')					
DA(H) 210' (200')					Max	MDA(H)	VIS
A	RVR 1200m	RVR 1300m	RVR 1500m	RVR 1500m	110	800' (784')	1500m
B		RVR 1400m	RVR 2200m	RVR 2400m	135	1070' (1054')	1600m
C		RVR 1400m	RVR 2200m	RVR 2400m	180	1660' (1644')	2400m
D		RVR 1400m	RVR 2300m	RVR 2400m	205	1990' (1974')	3600m

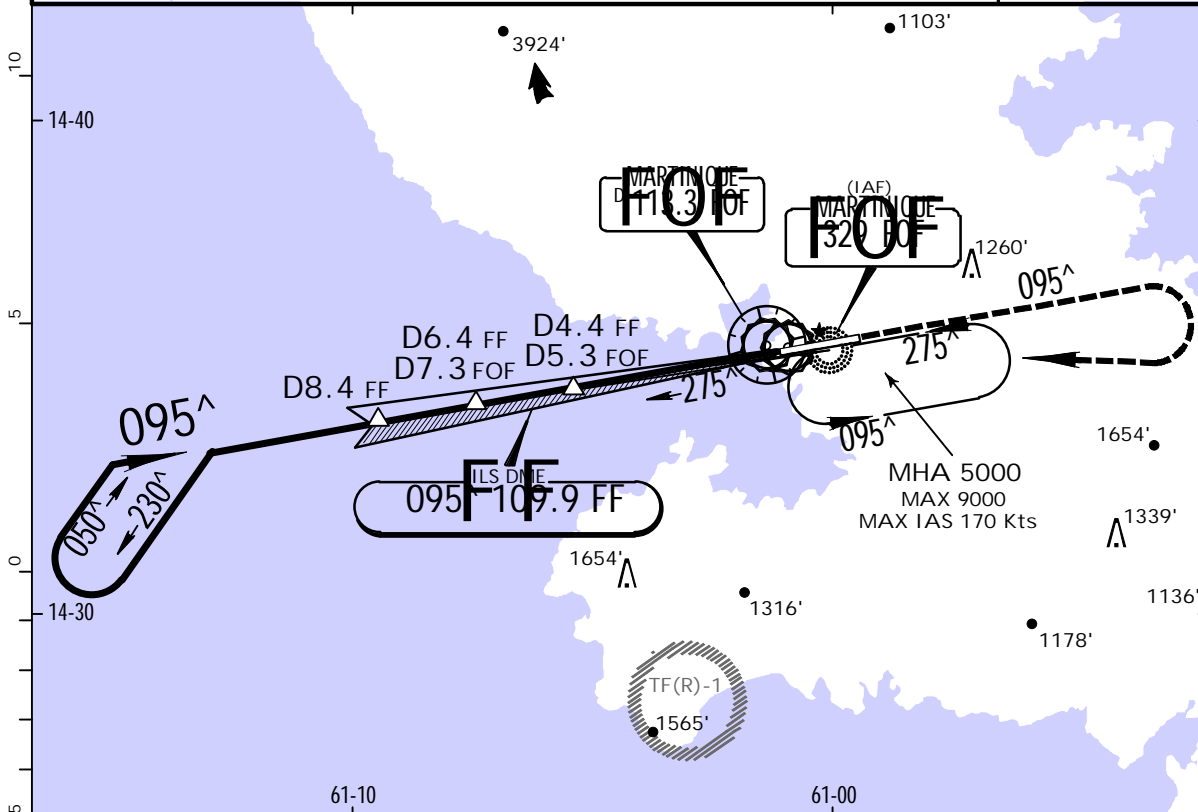
1 For add-on to the MDA(H), see ATC pages FRENCH ANTILLES.

TFFF/FDF
AIME CESAIRE

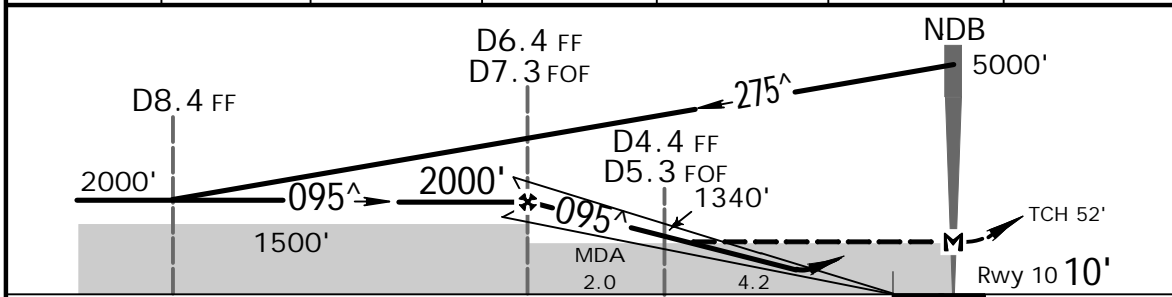
JEPPesen
2 AUG 13 (11-3) CAT A & B

MARTINIQUE, MARTINIQUE
ILS X or LOC X Rwy 10

ATIS 127.85		MARTINIQUE Approach 121.0		MARTINIQUE Tower 118.5		Ground 121.9	
LOC FF 109.9	Final Apch Crs 095^	Minimum Alt D6.4 FF 2000' (1990')	ILS DA(H) Refer to Minimums	Apt Elev 16'	Rwy 10 10'		
MISSED APCH: Climb STRAIGHT AHEAD to 2500', turn RIGHT to enter the holding pattern at FOF NDB climbing to 5000'. Do not turn before FOF NDB. Climb to 2500' prior to level acceleration.							MSA FOF NDB
Alt Set: hPa 1. DME required.		Rwy Elev: 0 hPa	Trans level: By ATC		Trans alt: 9000'		



LOC (GS out)	FF DME	6.0	5.0	4.0	3.0	2.0
	ALTITUDE	1840'	1540'	1210'	880'	550'



Gnd speed-Kts	70	90	100	120	140	160	REIL	2500'	5000'	FOF 329
ILS GS 3.00^	372	478	531	637	743	849		PAPI-L	↑	
MAP at NDB										

..Standard..		STRAIGHT-IN LANDING RWY 10			LOC (GS out) CDFA	CIRCLE-TO-LAND Not Authorized At Night	
Missed Apch climb gradient min 4.0%		Missed Apch climb gradient min 3.0%		Missed Apch climb gradient min 2.5%	1 DA/MDA(H) A: 690' (680') B: 710' (700')		Max Kts
DA(H) 210' (200')		A: 280' (270') B: 300' (290')		A: 470' (460') B: 480' (470')			MDA(H) 800' (784')
A	RVR 1200m	RVR 1300m		RVR 1500m	RVR 1500m		110 1500m
B		RVR 1400m					135 1070' (1054') 1600m
1 For add-on to the MDA(H), see ATC pages FRENCH ANTILLES.							

TFFF/FDF
AIME CESAIRE

JEPPESSEN

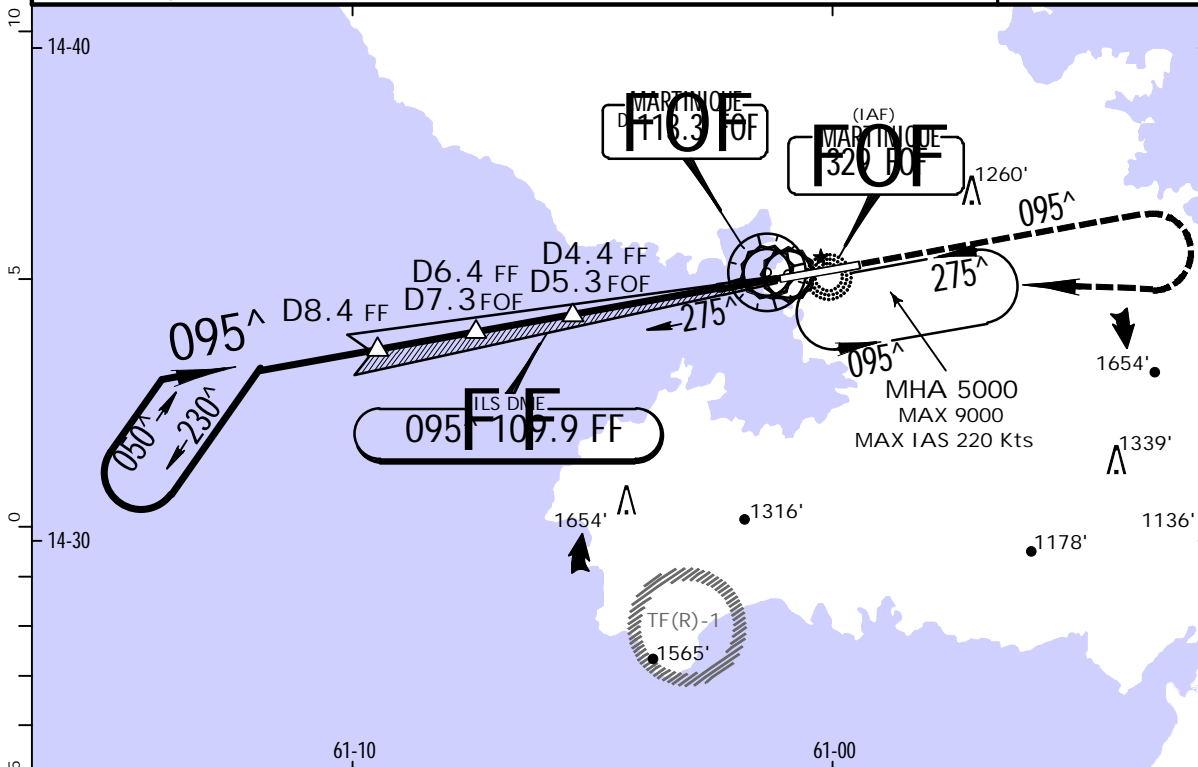
MARTINIQUE, MARTINIQUE
ILS X or LOC X Rwy 10

2 AUG 13

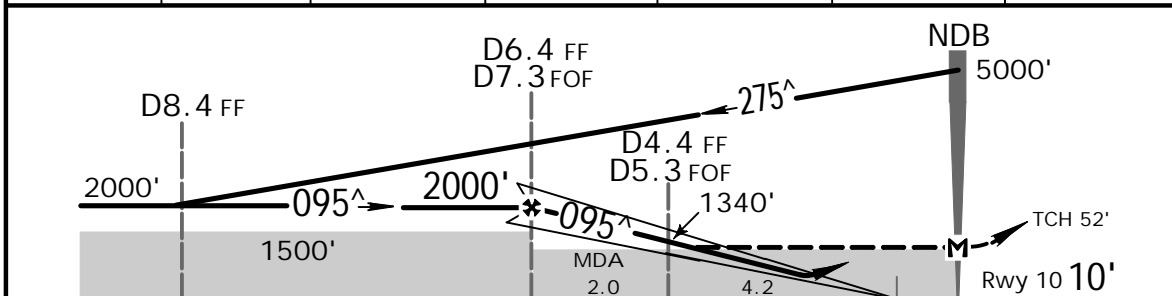
11-4

CAT C & D

ATIS 127.85		MARTINIQUE Approach 121.0		MARTINIQUE Tower 118.5		Ground 121.9	
LOC FF 109.9	Final Apch Crs 095 [^]	Minimum Alt D6.4 FF 2000'(1990')	ILS DA(H) Refer to Minimums	Apt Elev 16' Rwy 10 10'			
MISSED APCH: Climb STRAIGHT AHEAD to 2500', turn RIGHT to enter the holding pattern at FOF NDB climbing to 5000'. Do not turn before FOF NDB. Climb to 2500' prior to level acceleration.							
Alt Set: hPa		Rwy Elev: 0 hPa		Trans level: By ATC		Trans alt: 9000'	
1. DME required.							MSA FOF NDB



LOC (GS out)	FF DME	6.0	5.0	4.0	3.0	2.0
	ALTITUDE	1840'	1540'	1210'	880'	550'



Gnd speed-Kts	70	90	100	120	140	160			
ILS GS 3.00 [^]	372	478	531	637	743	849			
MAP at NDB									
							REIL	2500'	5000'
							PAPI-L	↑	RT
									FOF 329

..Standard..			STRAIGHT-IN LANDING RWY 10 ILS			LOC (GS out) CDFA		CIRCLE-TO-LAND	
Missed Apch climb gradient mim 4.0%			Missed Apch climb gradient mim 3.0%			Missed Apch climb gradient mim 2.5%		Not Authorized at Night	
DA(H) 210'(200')			C: 310'(300') D: 330'(320')			C: 490'(480') D: 500'(490')		1 DA/MDA(H) C: 730'(720') D: 750'(740')	
C	RVR 1200m	RVR 1400m	RVR 2200m	RVR 2400m			Max Kts	MDA(H)	VIS
D			RVR 2300m				180	1660'(1644')	2400m
							205	1990'(1974')	3600m

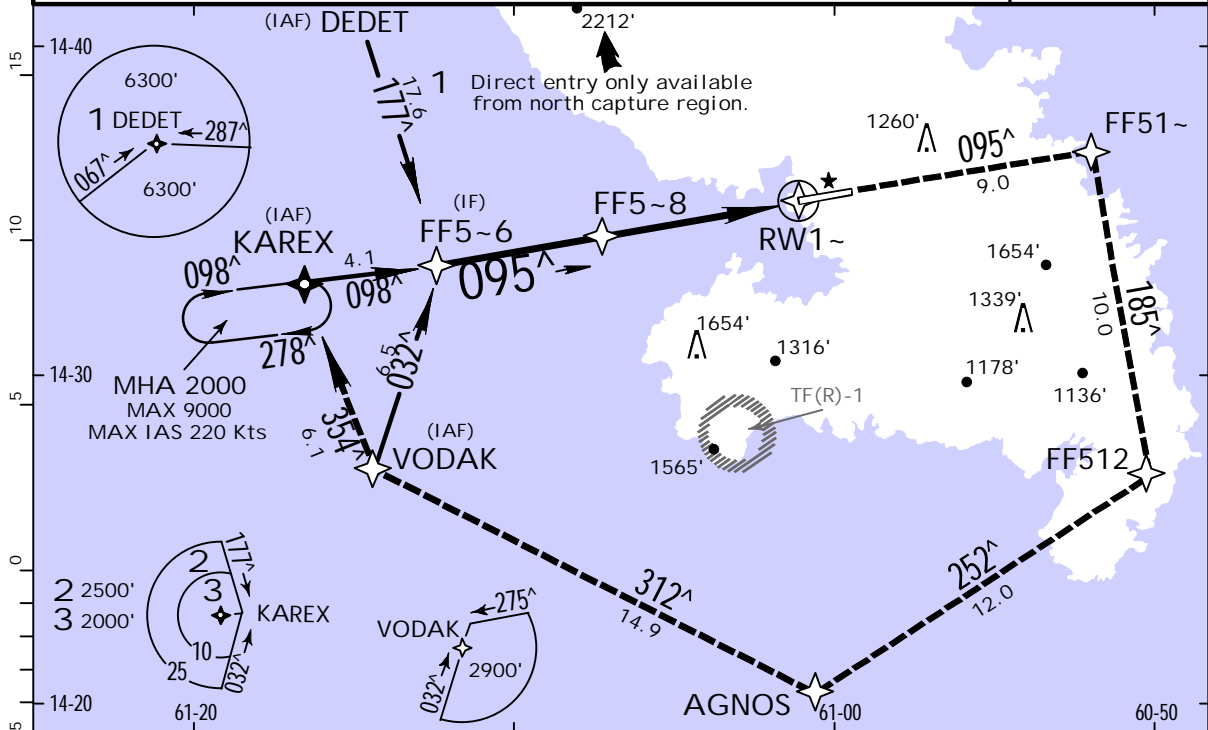
1 For add-on to the MDA(H), see the ATC pages FRENCH ANTILLES.
CHANGES: VOR name, NDB name, minimums note. | JEPPESSEN, 2002, 2013. ALL RIGHTS RESERVED.

TFFF/FDF
AIME CESAIRE

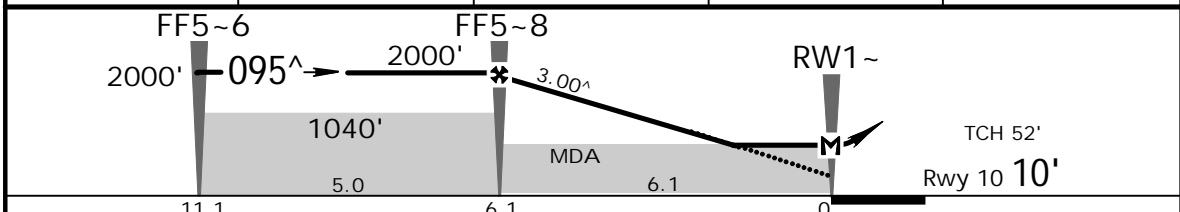
JEPPesen
29 AUG 14 (12-1)

MARTINIQUE MARTINIQUE
RNAV (GNSS) Rwy 10

ATIS 127.85		MARTINIQUE Approach 121.0		MARTINIQUE Tower 118.5		Ground 121.9	
RNAV	Final Apch Crs 095[^]	Minimum Alt (CONDITIONAL) Refer to Profile	LNAV DA/MDA(H) Refer to Minimums	Apt Elev 16' Rwy 10 10'		TAA 25 NM IAF	
MISSED APCH: Climb direct to FF51~ (magnetic 095 [^]), then turn RIGHT to FF512, then turn RIGHT to AGNOS, and then turn RIGHT to VODAK to enter KAREX holding climbing up to 3000' minimum. Or proceed according to ATS. Climb to 2000' prior to level acceleration.							
Alt Set: hPa		Rwy Elev: 0 hPa		Trans level: By ATC		Trans alt: 9000'	



DIST to RW1~	6.0	5.0	4.0	3.0
ALTITUDE	1975'	1660'	1340'	1020'



Gnd speed-Kts	70	90	100	120	140	160	REIL PAPI-L	↑	D→	FF51~	
Descent Angle	3.00 [^]	372	478	531	637	849					
MAP at RW1~											
FAF to MAP	6.1	5:14	4:04	3:40	3:03	2:37	2:17				

..Standard.. STRAIGHT-IN LANDING RWY 10
LNAV CDFA
Missed Apch climb gradient mim 2.5%

A: DA/MDA(H)	800' (790')	C: DA/MDA(H)	840' (830')
B: DA/MDA(H)	810' (800')	D: DA/MDA(H)	860' (850')

Missed Apch climb gradient mim 3.0%

A: DA/MDA(H)	700' (690')	C: DA/MDA(H)	750' (740')
B: DA/MDA(H)	720' (710')	D: DA/MDA(H)	770' (760')

Missed Apch climb gradient mim 4.0%

A: DA/MDA(H)	490' (480')	C: DA/MDA(H)	560' (550')
B: DA/MDA(H)	520' (510')	D: DA/MDA(H)	590' (580')

CIRCLE-TO-LAND

Not Authorized at Night
Not Authorized North of Rwy

Max Kts	MDA(H)
110	1490' (1474') - 1500m
135	1490' (1474') - 1600m
180	1590' (1574') - 2400m
205	1710' (1694') - 3600m

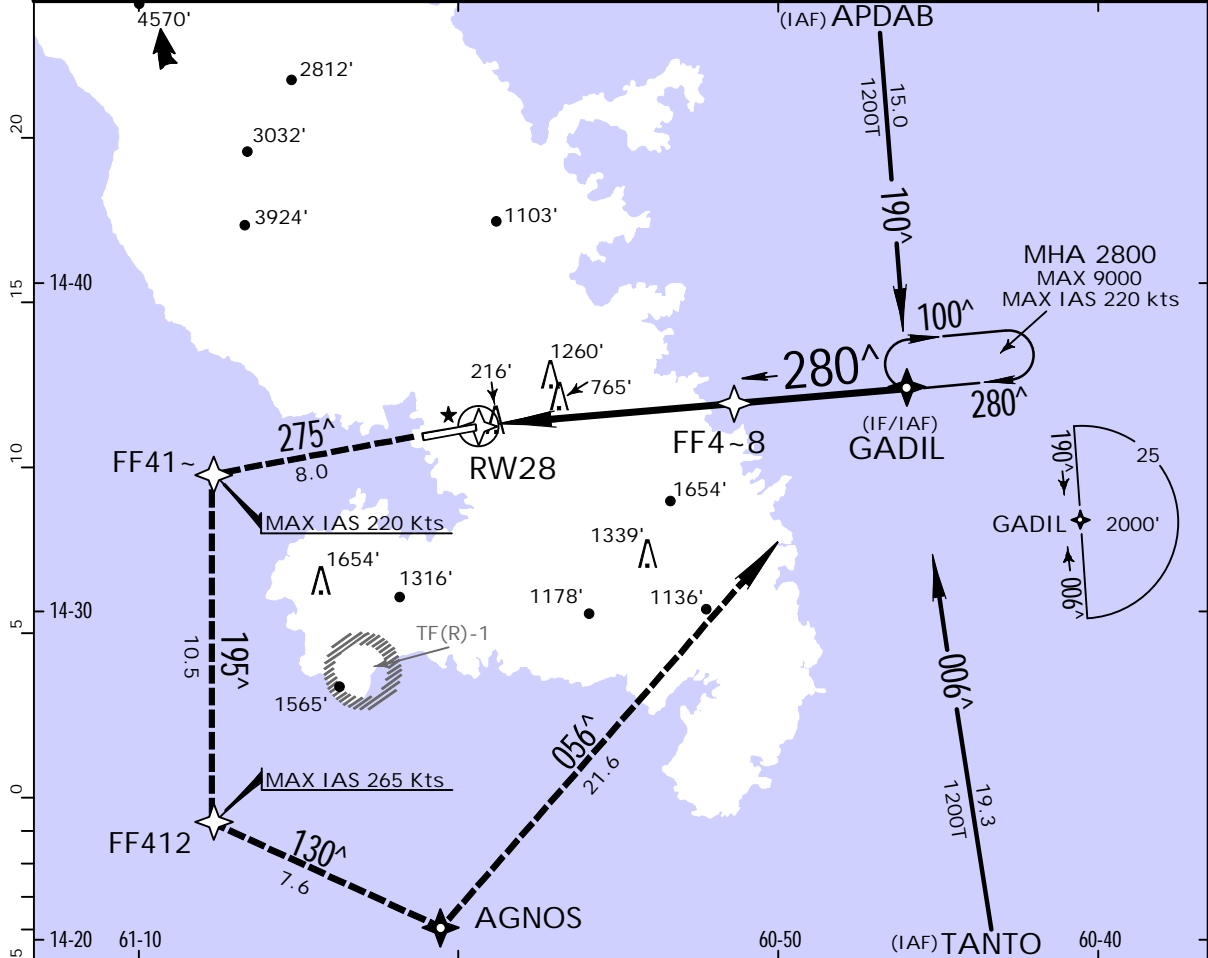
PANS OPS	A	RVR 1500m	110	1490' (1474') - 1500m
	B	RVR 2400m	135	1490' (1474') - 1600m
	C		180	1590' (1574') - 2400m
	D		205	1710' (1694') - 3600m

TFFF/FDF
AIME CESAIRE

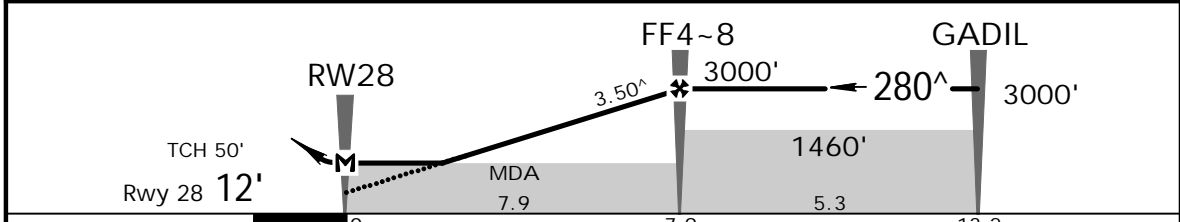
JEPPesen
29 AUG 14 (12-2)

MARTINIQUE MARTINIQUE
RNAV (GNSS) Rwy 28

ATIS 127.85		MARTINIQUE Approach 121.0		MARTINIQUE Tower 118.5		Ground 121.9	
RNAV	Final Apch Crs 280[^]	Minimum Alt (CONDITIONAL) Refer to Profile	LNAV DA/MDA(H) 1270' (1258')		Apt Elev 16' Rwy 28 12'	6000'	
MISSED APCH: Climb magnetic 275 [^] to FF41~ (MAX IAS 220 kts), then turn LEFT to FF412 (MAX IAS 265 kts) and then turn LEFT to AGNOS to enter GADIL holding climbing up to 3000' minimum. Or proceed according to ATS. Climb to 2000' prior to level acceleration.							
Alt Set: hPa		Rwy Elev: 0 hPa		Trans level: By ATC		Trans alt: 9000'	
1. Approach not aligned with runway centerline. 2. Visual Segment Surface penetrated.							



DIST to RW28	3.0	4.0	5.0	6.0	7.0
ALTITUDE	1270'	1545'	1915'	2285'	2655'



Gnd speed-Kts	70	90	100	120	140	160	REIL PAPI-L	↑ on 275 [^] FF41~	
Descent Angle	3.50 [^]	434	557	619	743	867			991
MAP at RW28									
FAF to MAP	7.9	6:46	5:16	4:44	3:57	3:23			2:58

..Standard.. STRAIGHT-IN LANDING RWY 28
1 LNAV CDFA
DA/MDA(H) **1270' (1258')**

PANS OPS	A	RVR 5000m	NOT APPLICABLE
	B		
	C		
	D		

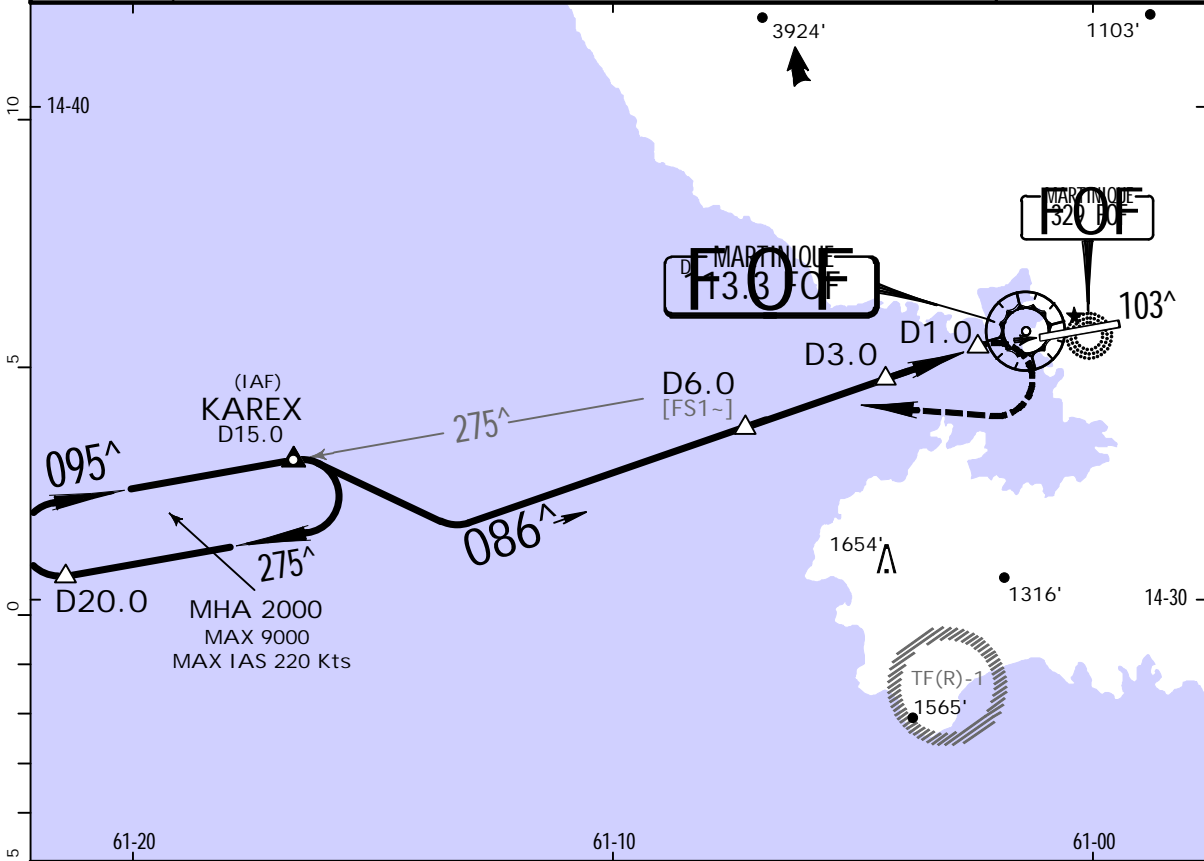
1 For add-on to the MDA(H), see ATC pages FRENCH ANTILLES.
CHANGES: Circling minimums removed. | JEPPesen, 2009, 2014. ALL RIGHTS RESERVED.

TFFF/FDF
AIME CESAIRE

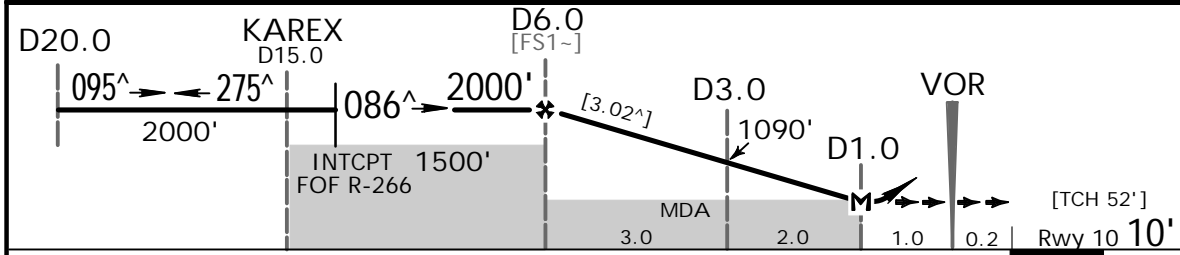
JEPPESEN MARTINIQUE
2 AUG 13 (13-1)

MARTINIQUE
VOR Z Rwy 10

ATIS 127.85		MARTINIQUE Approach 121.0		MARTINIQUE Tower 118.5		Ground 121.9	
VOR FOF 113.3		Final Apch Crs 086 [^]		Minimum Alt D6.0 2000' (1990')		DA/MDA(H) Refer to Minimums	
				Apt Elev 16' Rwy 10 10'			
MISSED APCH: Turn RIGHT to intercept and follow outbound FOF VOR R-103. At 2500', turn RIGHT to join KAREX climbing to 3000'. Climb to 2500' prior to level acceleration.							MSA FOF VOR
Alt Set: hPa		Rwy Elev: 0 hPa		Trans level: By ATC		Trans alt: 9000'	
1. DME required.				2. Approach not aligned with runway centerline.			



FOF DME	6.0	5.0	4.0	3.0	2.0
ALTITUDE	2000'	1720'	1410'	1090'	780'



Gnd speed-Kts	70	90	100	120	140	160	REIL PAPI-L	FOF on 113.3 R-103
Descent Angle [3.02 [^]]	374	481	534	641	748	855		
MAP at D1.0 or FAF to MAP	5.0	4:17	3:20	3:00	2:30	2:09		

..Standard.. STRAIGHT-IN LANDING RWY 10				CIRCLE-TO-LAND			
1 CDFA				Not Authorized at Night			
A: DA/MDA(H) 580' (570')		C: DA/MDA(H) 620' (610')		Max Kts		MDA(H)	
B: DA/MDA(H) 600' (590')		D: DA/MDA(H) 640' (630')		110		800' (784')	
				135		1070' (1054')	
				180		1660' (1644')	
				205		1990' (1974')	
RVR 1500m						VIS 1500m	
RVR 2800m						VIS 1600m	
RVR 2900m						VIS 2800m	

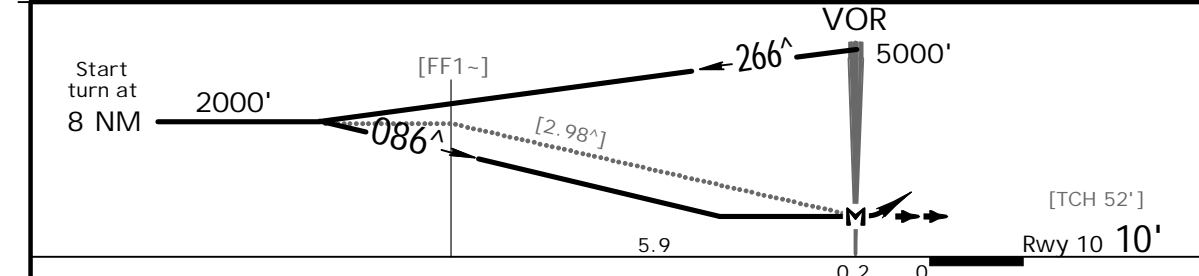
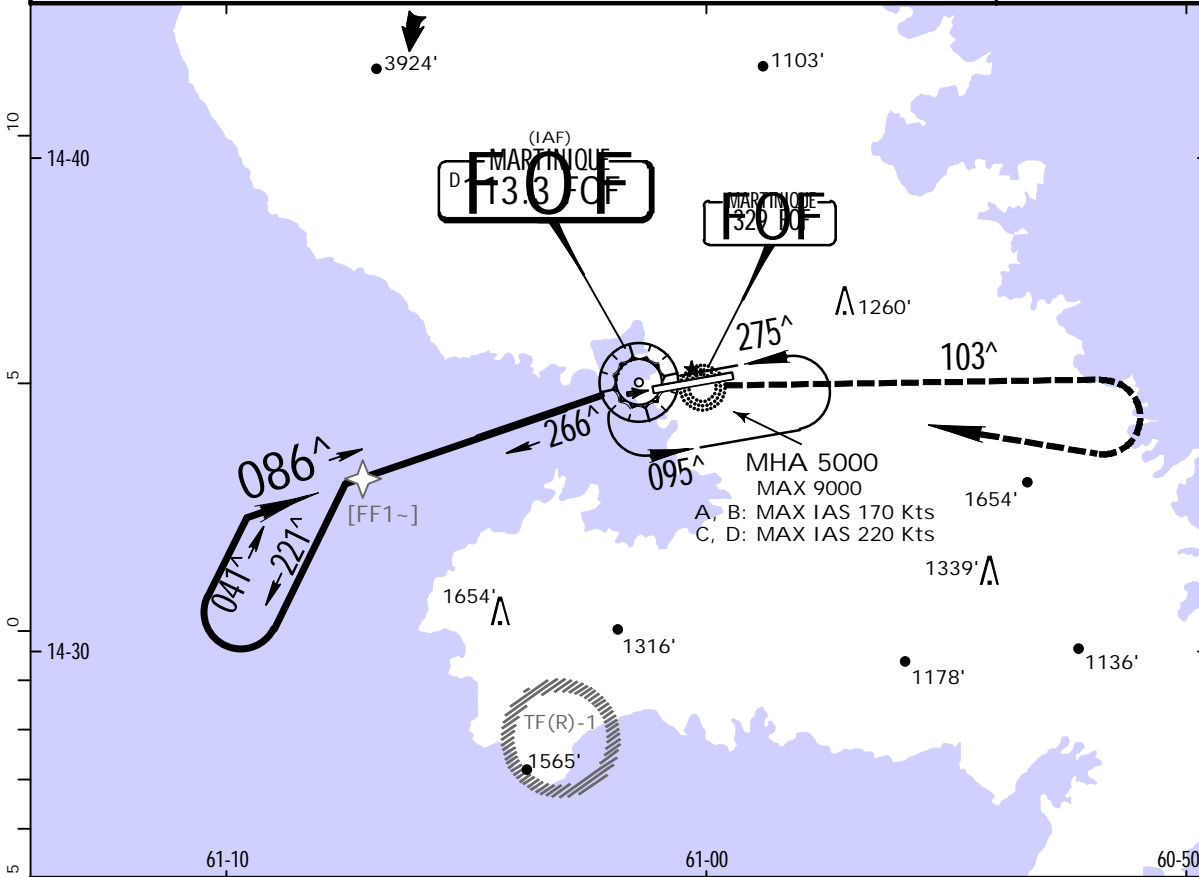
1 For add-on to the MDA(H), see ATC pages FRENCH ANTILLES.

TFFF/FDF
AIME CESAIRE

JEPPESEN
2 AUG 13 (13-2)

MARTINIQUE, MARTINIQUE
VOR Y Rwy 10

ATIS 127.85		MARTINIQUE Approach 121.0		MARTINIQUE Tower 118.5		Ground 121.9	
VOR FOF 113.3	Final Apch Crs 086 [^]	No FAF		DA/MDA(H) Refer to Minimums	Apt Elev 16' Rwy 10 10'		
MISSED APCH: Climb outbound on FOF VOR R-103 to 2500', turn RIGHT to enter holding pattern at FOF VOR climbing to 5000'. Do not turn before FOF VOR. Climb to 2500' prior to level acceleration.							
Alt Set: hPa		Rwy Elev: 0 hPa		Trans level: By ATC		Trans alt: 9000'	
1. Approach not aligned with runway centerline.							MSA FOF VOR



Gnd speed-Kts	70	90	100	120	140	160	REIL PAPI-L	2500' ↑ on 113.3 R-103
Descent Angle [2.98 [^]]	369	474	527	633	738	849		
MAP at VOR								

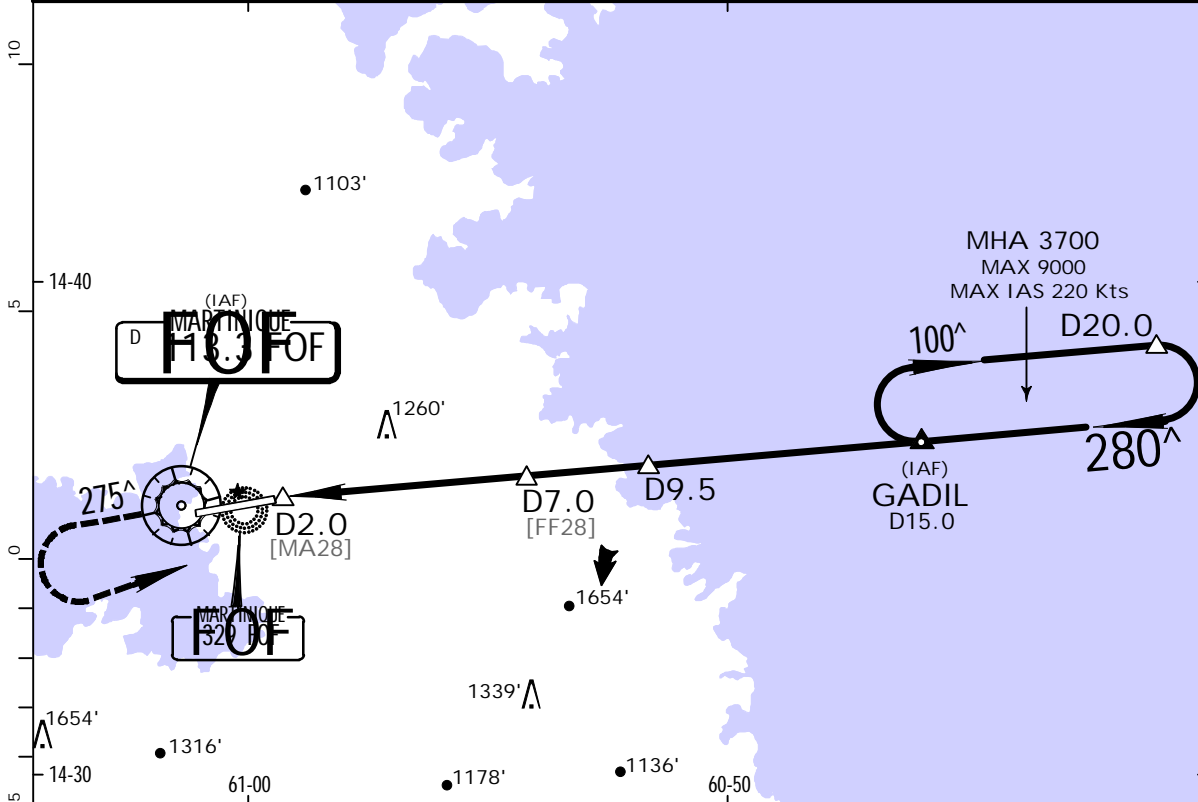
..Standard.. STRAIGHT-IN LANDING RWY10 1 CDFA				CIRCLE-TO-LAND			
A: DA/MDA(H) 740' (730')		C: DA/MDA(H) 780' (770')		Not Authorized at Night			
B: DA/MDA(H) 750' (740')		D: DA/MDA(H) 800' (790')		Max Kts. MDA(H) VIS			
A	RVR 3300m	110	800' (784')	3300m			
B	RVR 3400m	135	1070' (1054')	3400m			
C	RVR 3600m	180	1660' (1644')	3600m			
D		205	1990' (1974')	3600m			

1 For add-on to the MDA(H), see ATC pages FRENCH ANTILLES.
 CHANGES: VOR name, NDB name, minimums note. | JEPPESEN, 2002, 2013. ALL RIGHTS RESERVED.

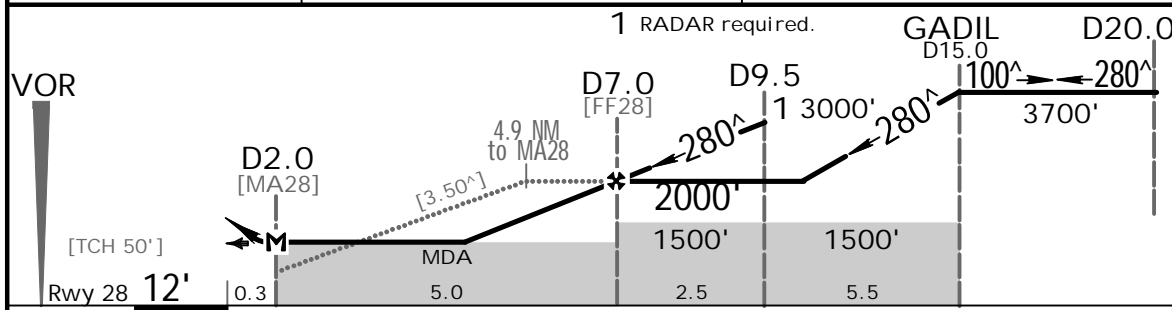
TFFF/FDF
AIME CESAIRE

JEPPESEN MARTINIQUE, MARTINIQUE
2 AUG 13 (13-3)
VOR Rwy 28

ATIS 127.85		MARTINIQUE Approach 121.0		MARTINIQUE Tower 118.5		Ground 121.9	
VOR FOF 113.3		Final Apch Crs 280 [^]		Minimum Alt D7.0 2000' (1988')		DA/MDA(H) 1390' (1378')	
				Apt Elev 16' Rwy 28 12'			
MISSED APCH: Climb inbound on FOF VOR R-100. At FOF VOR follow FOF VOR R-275 outbound. At 2500' turn LEFT to intercept and follow FOF VOR R-100 to GADIL climbing to 3700'. Do not turn before FOF VOR. Climb to 2500' prior to level acceleration.							
Alt Set: hPa		Rwy Elev: 0 hPa		Trans level: By ATC		Trans alt: 9000'	
1. DME required. 2. Approach not aligned with runway centerline.						MSA FOF VOR	



FOF DME	5.0	6.0
ALTITUDE	1280'	1650'



Gnd speed-Kts	70	90	100	120	140	160	REIL PAPI-L 2500' on FOF R-100
Descent Angle	[3.50 [^]]	434	557	619	743	867	
MAP at D2.0 or FAF to MAP	5.0	4:17	3:20	3:00	2:30	2:09	

..Standard..		STRAIGHT-IN LANDING RWY 28		CIRCLE-TO-LAND		
		CDFA				
		DA/MDA(H) 1 1390' (1378')				
A	RVR 5000m				Max Kts	NOT APPLICABLE
B						
C						
D						

PANS OPS

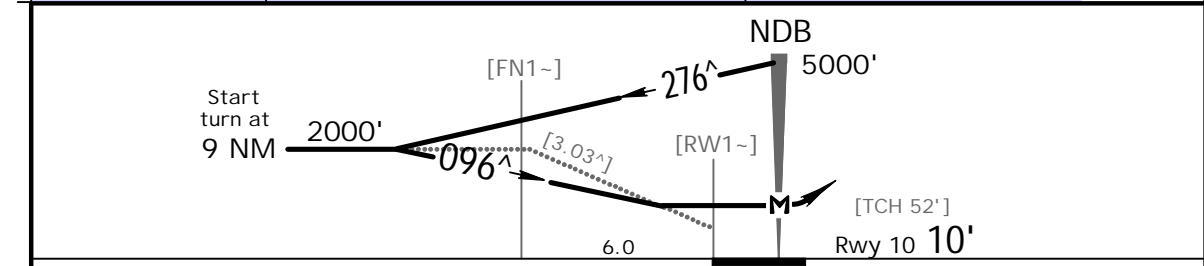
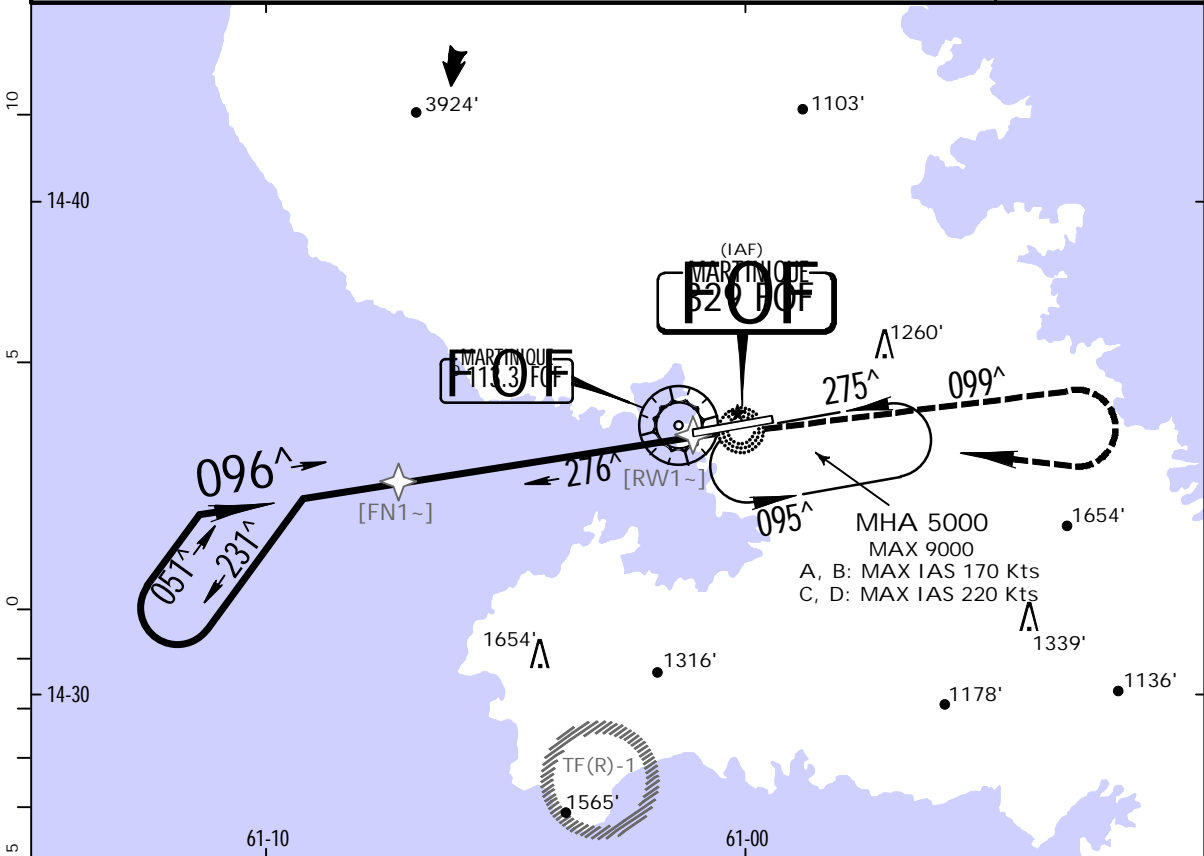
1 For add-on to the MDA(H), see ATC pages FRENCH ANTILLES.

TFFF/FDF
AIME CESAIRE

JEPPESEN
2 AUG 13 (16-1)

MARTINIQUE, MARTINIQUE
NDB Rwy 10

ATIS 127.85		MARTINIQUE Approach 121.0		MARTINIQUE Tower 118.5		Ground 121.9	
NDB FOF 329	Final Apch Crs 096[^]	No FAF		DA/MDA(H) Refer to Minimums	Apt Elev 16' Rwy 10 10'		
MISSED APCH: Climb on 099 [^] bearing from FOF NDB to 2500', turn RIGHT to enter the holding pattern at FOF NDB climbing to 5000'. Do not turn before FOF NDB. Climb to 2500' prior to level acceleration.							
Alt Set: hPa		Rwy Elev: 0 hPa		Trans level: By ATC		Trans alt: 9000'	
1. Approach not aligned with runway centerline.							MSA FOF NDB



Gnd speed-Kts	70	90	100	120	140	160	REIL PAPI-L	2500' ↑ on FOF 329 099 [^]	RT	FOF 329
Descent Angle [3.03 [^]]	375	482	536	643	750	858				
MAP at NDB										

..Standard..		STRAIGHT-IN LANDING RWY10		CIRCLE-TO-LAND	
1 CDFA		1 CDFA		Not Authorized at Night	
A: DA/MDA(H)	1010' (1000')	C: DA/MDA(H)	1050' (1040')	Max	
B: DA/MDA(H)	1020' (1010')	D: DA/MDA(H)	1070' (1060')	MDA(H)	VIS
A	RVR 4500m		110	1010' (994')	4500m
B			135	1070' (1054')	4900m
C	RVR 4900m		180	1660' (1644')	4900m
D			205	1990' (1974')	4900m

1 For add-on to the MDA(H), see ATC pages FRENCH ANTILLES.
CHANGES: VOR name, NDB name, minimums note. | JEPPESEN, 2000, 2013. ALL RIGHTS RESERVED.

Chart changes since cycle 12-2015

ADD = added chart, REV = revised chart, DEL = deleted chart.

ACT PROCEDURE IDENT

INDEX

REV DATE

EFF DATE

MARTINIQUE, (AIME CESAIRE - TFFF)

TERMINAL CHART CHANGE NOTICES

No Chart Change Notices for Airport TFFF