

## List of pages in this Trip Kit

Trip Kit Index

Airport Information For TBPB

Terminal Charts For TBPB

Revision Letter For Cycle 13-2015

Change Notices

Notebook

## General Information

Location: BRIDGETOWN BRB  
ICAO/IATA: TBPB / BGI  
Lat/Long: N 13 04.5 W 059 29.5  
Elevation: 169 ft

Airport Use: Public  
Daylight Savings: Not Observed  
UTC Conversion: +4:00 = UTC  
Magnetic Variation: 15.0° W

Fuel Types: 100-130 Octane, Jet A-1  
Customs: Yes  
Airport Type: IFR  
Landing Fee: No  
Control Tower: Yes  
Jet Start Unit: No  
LLWS Alert: No  
Beacon: Yes  
Night VFR Capable

Sunrise: 0934 Z  
Sunset: 2228 Z

## Runway Information

Runway: 09  
Length x Width: 11017 ft x 148 ft  
Surface Type: asphalt  
TDZ-Elev: 169 ft  
Lighting: Edge, ALS, Centerline, REIL

Runway: 27  
Length x Width: 11017 ft x 148 ft  
Surface Type: asphalt  
TDZ-Elev: 160 ft  
Lighting: Edge, Centerline, REIL  
Stopway: 174 ft

## Communication Information

ATIS: 132.725  
Adams Tower: 118.700  
Adams Ground: 121.900

Adams Approach: 129.350

Adams Radar: 121.200

Adams Radar: 120.700

Adams Radar: 128.850

TBPB/BGI

JEPPESEN

BRIDGETOWN, BARBADOS

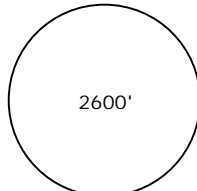
GRANTLEY ADAMS INTL

29 MAR 13

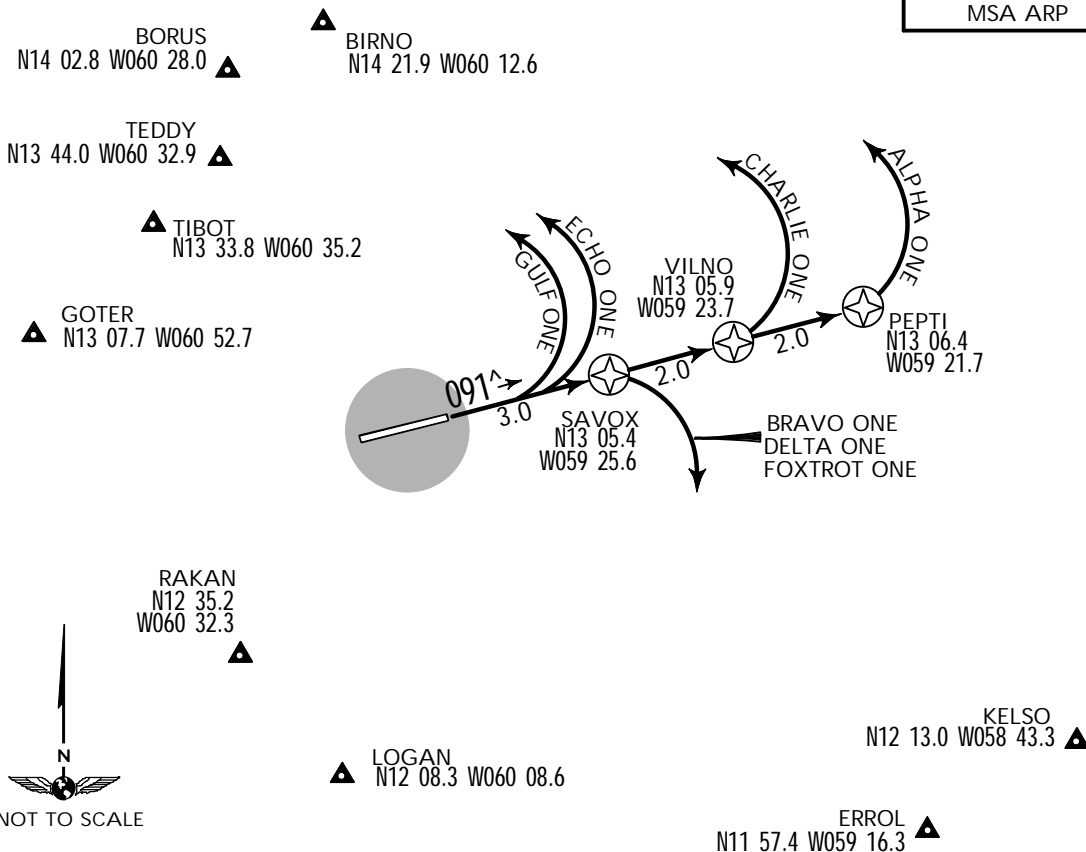
10-3

.Eff.4.Apr.

.RNAV.SID.

Apt Elev 169'	Trans level: FL 40 or FL 45 as assigned by ATC Trans alt: 3000' 1. GNSS required. 2. RADAR vectoring through Adams Radar 120.7, 121.2, 128.85.	 <p>2600' MSA ARP</p>
------------------	--	--

**RNAV DEPARTURES RWY 09**  
ALPHA ONE [A1], BRAVO ONE [B1], CHARLIE ONE [C1], DELTA ONE [D1],  
ECHO ONE, FOXTROT ONE [F1], GULF ONE



INITIAL CLIMB	
SID	JET AIRCRAFT
ALPHA ONE	Climb direct PEPTI. Upon reaching PEPTI or 2500', whichever comes first, turn LEFT direct BIRNO, BORUS, GOTER, TEDDY, TIBOT or N18 00.0/W056 00.0 as assigned. Then as filed. MAINTAIN best possible rate of climb through 5000'.
BRAVO ONE	Climb direct SAVOX. Upon reaching SAVOX or 2000', whichever comes first, turn RIGHT direct ERROL, KELSO, LOGAN or RAKAN as assigned. Then as filed. A normal rate of climb may be used.
QUAD TURBOPROP AIRCRAFT	
CHARLIE ONE	Climb direct VILNO. Upon reaching VILNO or 2000', whichever comes first, turn LEFT direct BIRNO, BORUS, GOTER, TEDDY or TIBOT as assigned. Then as filed. MAINTAIN best possible rate of climb through 5000'.
DELTA ONE	Climb direct SAVOX. Upon reaching SAVOX or 1500', whichever comes first, turn RIGHT direct ERROL, KELSO, LOGAN or RAKAN as assigned. Then as filed. A normal rate of climb may be used.
PROPELLER DRIVEN AIRCRAFT IN EXCESS OF 12500 lbs (5700 kg)	
ECHO ONE	Climb on runway heading 091° to 1500'. Then turn LEFT direct BIRNO, BORUS, GOTER, TEDDY or TIBOT as assigned. Then as filed. MAINTAIN best possible rate of climb through 5000'.
FOXTROT ONE	Climb direct SAVOX. Upon reaching SAVOX or 1000', whichever comes first, turn RIGHT direct ERROL, KELSO, LOGAN or RAKAN as assigned. Then as filed. A normal rate of climb may be used.
ALL OTHER PROPELLER DRIVEN AIRCRAFT	
GULF ONE	Climb on runway heading 091° to 1000'. Then turn LEFT direct BIRNO, BORUS, GOTER, TEDDY or TIBOT as assigned. Then as filed. A normal rate of climb may be used.
FOXTROT ONE	Climb direct SAVOX. Upon reaching SAVOX or 1000', whichever comes first, turn RIGHT direct ERROL, KELSO, LOGAN or RAKAN as assigned. Then as filed. A normal rate of climb may be used.

TBPB/BGI

JEPPESEN

BRIDGETOWN, BARBADOS

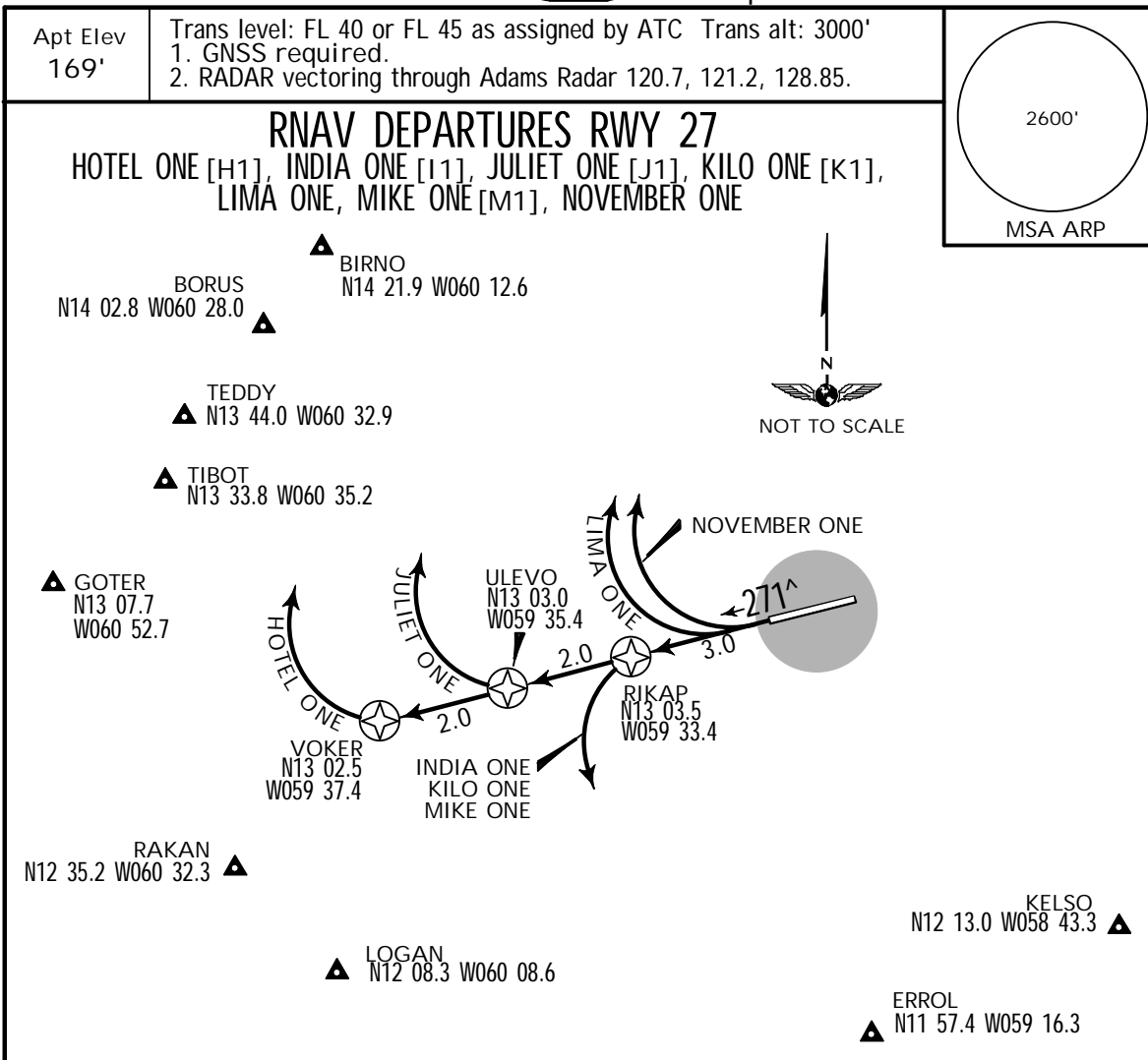
GRANTLEY ADAMS INTL

29 MAR 13

10-3A

.Eff.4.Apr.

.RNAV.SID.



INITIAL CLIMB	
SID	JET AIRCRAFT
HOTEL ONE	Climb direct VOKER. Upon reaching VOKER or 2500', whichever comes first, turn RIGHT direct BIRNO, BORUS, GOTER, TEDDY, TIBOT or N18 00.0/W056 00.0 as assigned. Then as filed. MAINTAIN best possible rate of climb through 5000'.
INDIA ONE	Climb direct RIKAP. Upon reaching RIKAP or 2000', whichever comes first, turn LEFT direct ERROL, KELSO, LOGAN or RAKAN as assigned. Then as filed. A normal rate of climb may be used.
QUAD TURBOPROP AIRCRAFT	
JULIET ONE	Climb direct ULEVO. Upon reaching ULEVO or 2000', whichever comes first, turn RIGHT direct BIRNO, BORUS, GOTER, TEDDY or TIBOT as assigned. Then as filed. MAINTAIN best possible rate of climb through 5000'.
KILO ONE	Climb direct RIKAP. Upon reaching RIKAP or 1500', whichever comes first, turn LEFT direct ERROL, KELSO, LOGAN or RAKAN as assigned. Then as filed. A normal rate of climb may be used.
PROPELLER DRIVEN AIRCRAFT IN EXCESS OF 12500 Ibs (5700 kg)	
LIMA ONE	Climb on runway heading 271° to 1500'. Then turn RIGHT direct BIRNO, BORUS, GOTER, TEDDY or TIBOT as assigned. Then as filed. MAINTAIN best possible rate of climb through 5000'.
MIKE ONE	Climb direct RIKAP. Upon reaching RIKAP or 1000', whichever comes first, turn LEFT direct ERROL, KELSO, LOGAN or RAKAN as assigned. Then as filed. A normal rate of climb may be used.
ALL OTHER PROPELLER DRIVEN AIRCRAFT	
NOVEMBER ONE	Climb on runway heading 271° to 1000'. Then turn RIGHT direct BIRNO, BORUS, GOTER, TEDDY or TIBOT as assigned. Then as filed. A normal rate of climb may be used.
MIKE ONE	Climb direct RIKAP. Upon reaching RIKAP or 1000', whichever comes first, turn LEFT direct ERROL, KELSO, LOGAN or RAKAN as assigned. Then as filed. A normal rate of climb may be used.

TBPB/BGI

 **JEPPESEN**

6 JUL 12

(10-4)

**BRIDGETOWN, BARBADOS**  
GRANTLEY ADAMS INTL

NOISE

## NOISE ABATEMENT PROCEDURES

LOCAL TIME + 4 HOURS = UTC(Z)

### AIRCRAFT ARRIVING RWY 09/27

All IFR aircraft shall maintain an altitude of 900 m (3,000 ft) until established on an instrument let-down procedure.

Jet aircraft and propeller driven aircraft in excess of 5,700 kg VFR and on a visual approach shall:

- a) Maintain a minimum flight altitude of 900 m (3,000 ft) while flying over the island.
- b) Not be less than 5 NM from the shoreline if operating below 900 m (3,000 ft).
- c) Intercept the localizer not closer than 5 NM if approaching from the south.

### AIRCRAFT DEPARTING RWY 09/27 NORTHBOUND

Prior to initiating northbound turns for departures on RWY 09/27:

- a) Jet aircraft shall climb to 750 m (2,500 ft) or proceed to 7 NM, whichever comes first, and continue climbing at best possible rate of climb.
- b) Quad turboprop aircraft shall climb to 600 m (2,000 ft) or proceed to 5 NM, whichever comes first, and continue climbing at best possible rate of climb.
- c) Propeller driven aircraft in excess of 5,700 kg shall climb to 450 m (1,500 ft) and continue climbing at best possible rate of climb.
- d) All other propeller driven aircraft shall climb to 300 m (1,000 ft) and continue normal climbing.

### AIRCRAFT DEPARTING RWY 09/27 SOUTHBOUND

Prior to initiating southbound turns for departures on RWY 09/27:

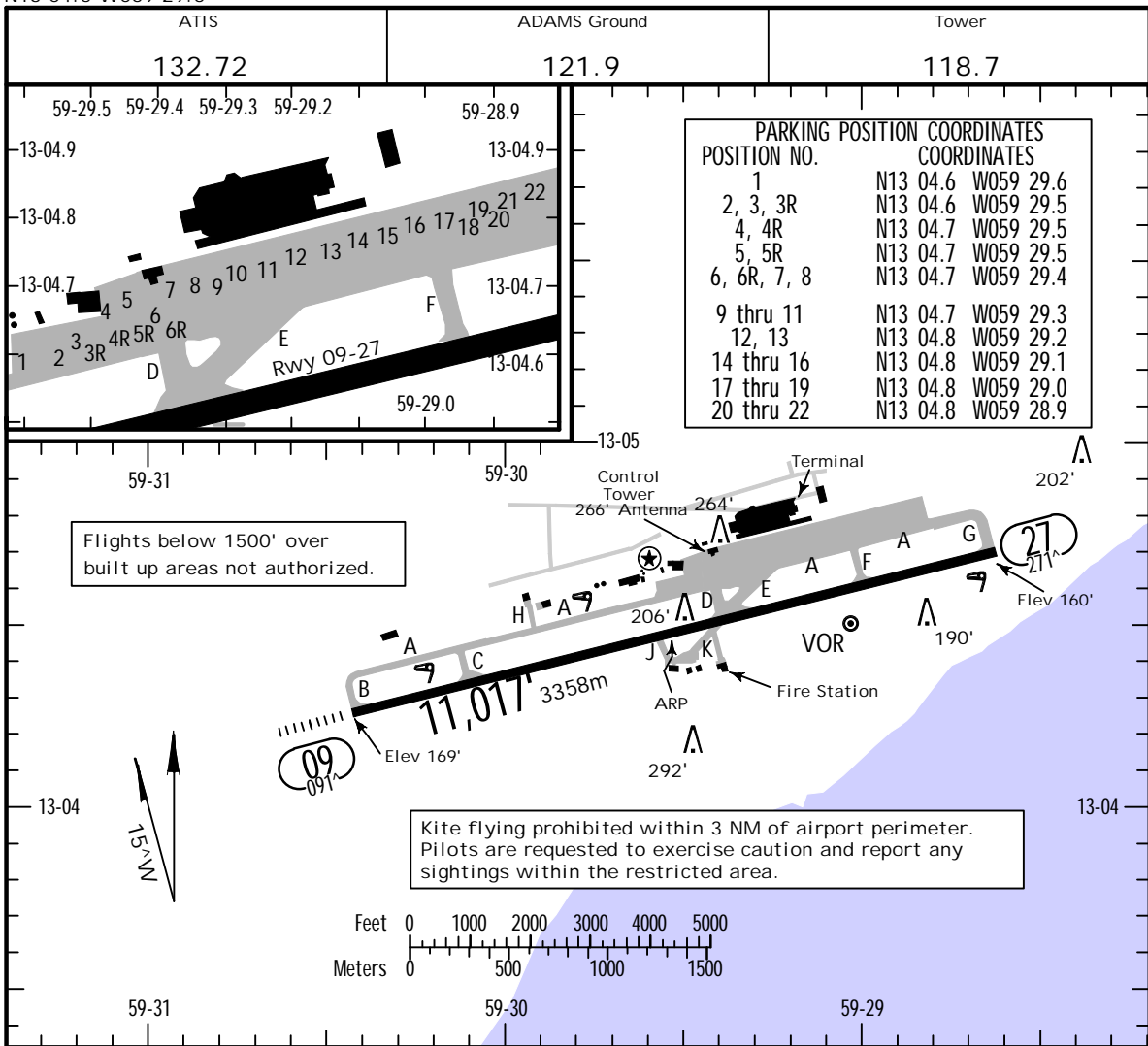
- a) Jet aircraft shall climb to 600 m (2,000 ft) or proceed to 3 NM, whichever comes first, and continue normal climbing.
- b) Quad turboprop aircraft shall climb to 450 m (1,500 ft) or proceed to 3 NM, whichever comes first, and continue normal climbing.
- c) All other propeller driven aircraft shall climb to 300 m (1,000 ft) or proceed to 3 NM, whichever comes first, and continue normal climbing.

Runway 27 departures will not normally be permitted between 0200 UTC and 1000 UTC unless meteorological conditions dictate otherwise.

**TBPB/BGI**

Apt Elev 169  
N13 04.5 W059 29.5

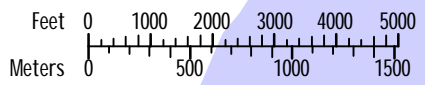
**JEPPESSEN BRIDGETOWN, BARBADOS**  
16 AUG 13 (11-1) .Eff.22.Aug. GRANTLEY ADAMS INTL



POSITION NO.	COORDINATES
1	N13 04.6 W059 29.6
2, 3, 3R	N13 04.6 W059 29.5
4, 4R	N13 04.7 W059 29.5
5, 5R	N13 04.7 W059 29.5
6, 6R, 7, 8	N13 04.7 W059 29.4
9 thru 11	N13 04.7 W059 29.3
12, 13	N13 04.8 W059 29.2
14 thru 16	N13 04.8 W059 29.1
17 thru 19	N13 04.8 W059 29.0
20 thru 22	N13 04.8 W059 28.9

Flights below 1500' over built up areas not authorized.

Kite flying prohibited within 3 NM of airport perimeter. Pilots are requested to exercise caution and report any sightings within the restricted area.



ADDITIONAL RUNWAY INFORMATION						
RWY		USABLE LENGTHS				
		Threshold	Landing Beyond	Glide Slope	TAKE-OFF	WIDTH
09	HIRL (50m) 1 CL HIALS PAPI-L (angle 3.0°) grooved			10043' 3061m		148'
27	HIRL (50m) 1 CL PAPI-L (angle 3.0°) grooved					45m

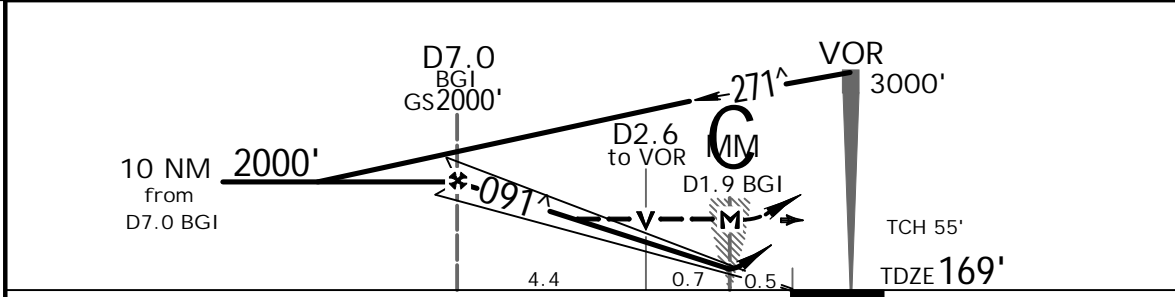
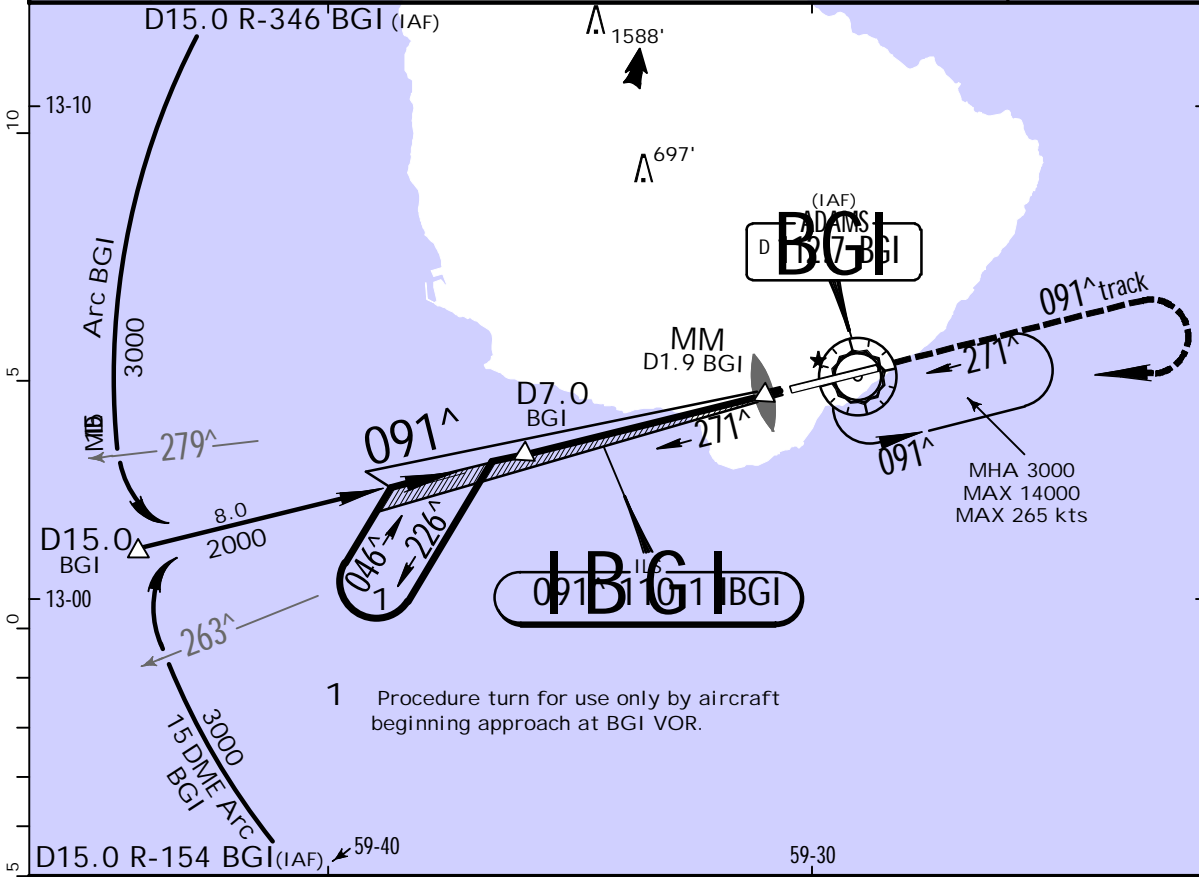
1 (30m) spacing white

TAKE-OFF					
	AIR CARRIER (JAA)			AIR CARRIER (FAR 121)	
	RL & CL	RCLM (DAY only) or RL	All Rwys RCLM (DAY only) or RL	2 Eng	All Rwys Adequate Vis Ref
A					
B	200m	250m	400m	400m	
C					
D	250m	300m			

# TBPB/BGI BRIDGETOWN, BARBADOS

GRANTLEY ADAMS INTL 16 AUG 13 (11-1) .Eff.22.Aug. ILS or LOC Rwy 09

BRIEFING STRIP™	ATIS 132.72	Radar vectoring thru ADAMS Radar 120.7 121.2 128.85			ADAMS Approach (R) 129.35	ADAMS Tower 118.7	Ground 121.9
	LOC IBGI 110.1	Final Apch Crs 091 <sup>^</sup>	GS D7.0 BGI 2000' (1831')	ILS DA(H) Refer to Minimums	Apt Elev 169' TDZE 169'		2600'
	MISSED APCH: Climb to 3000' on track 091 <sup>^</sup> , then turn RIGHT and proceed direct to BGI VOR and hold. GS out: If MM inoperative, initiate missed approach at D1.9 BGI.						
Alt Set: hPa (IN on req)			TDZ Elev: 6 hPa		Trans alt: 3000'		MSA BGI VOR
Trans level: FL 40 or FL 45 as assigned by ATC. 1.DME required.							



Gnd speed-Kts	70	90	100	120	140	160	HIALS 3000'	091 <sup>^</sup> on track	RT	D	BGI 112.7
GS	3.00 <sup>^</sup>	372	478	531	637	849					
MAP at MM/D1.9 BGI											

ILS STRAIGHT-IN LANDING RWY 09						CIRCLE-TO-LAND					
DA(H) A: 369' (200')			C: 384' (215')			LOC (GS out)			Not Authorized North of Rwy 09-27		
B: 376' (207')			D: 395' (226')			MDA(H) 600' (431')					
FULL			ALS out			ALS out			Max Kts		
A					1.6 km		100		600' (431')-1.6 km		
B					1.6 km		135		670' (501')-1.6 km		
C	0.8 km	1.2 km				2.0 km		180		760' (591')-2.4 km	
D					2.4 km		205		860' (691')-3.6 km		



# TBPB/BGI

GRANTLEY ADAMS INTL

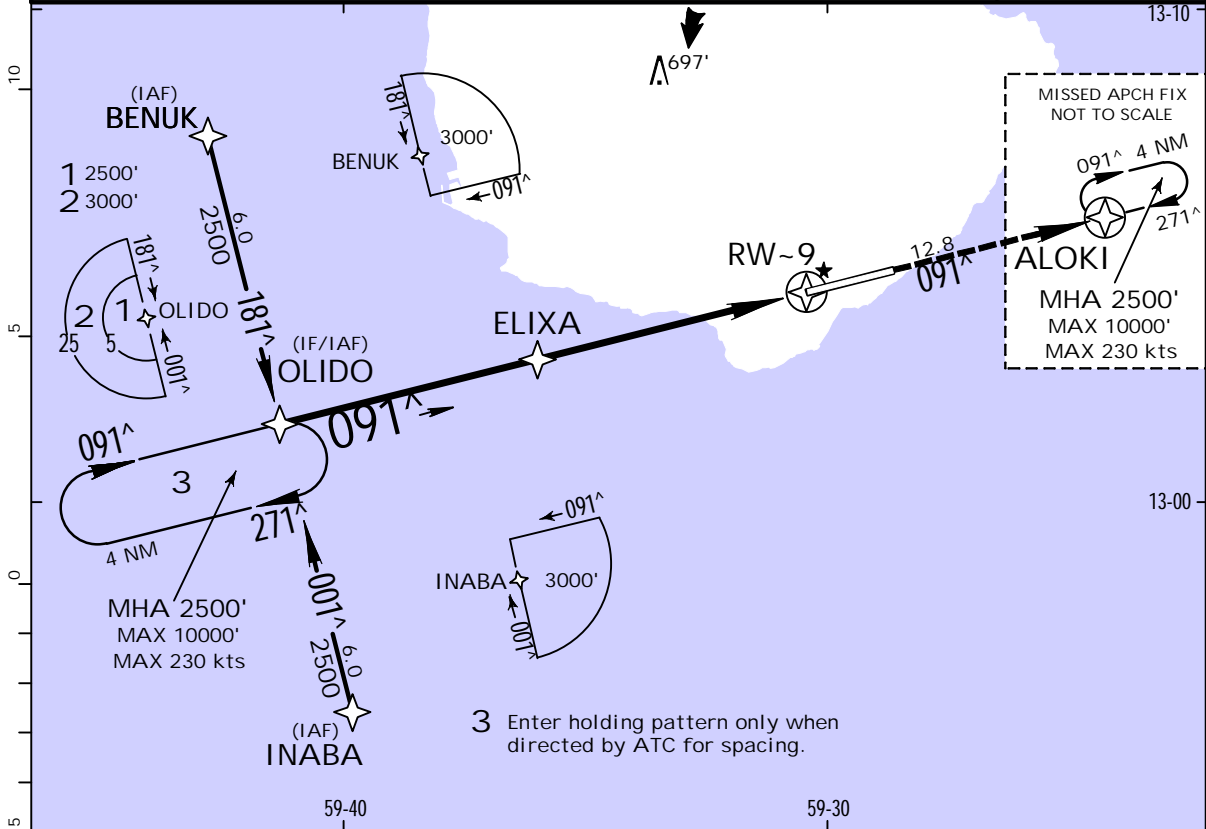


12 APR 13 (12-1)

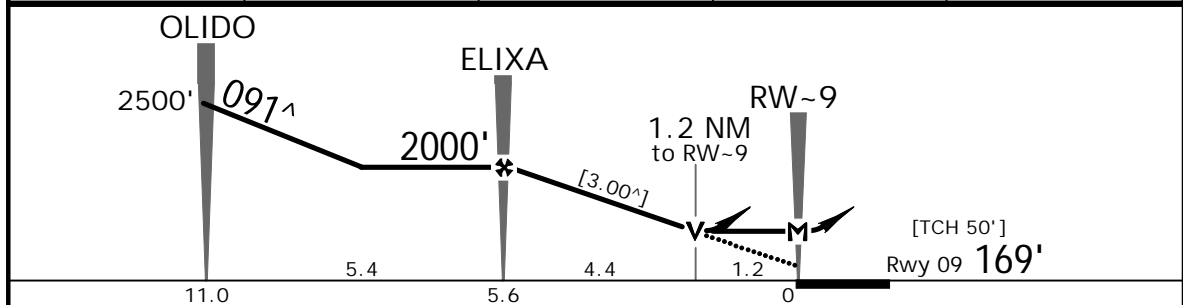
# BRIDGETOWN, BARBADOS

RNAV (GNSS) Rwy 09

BRIEFING STRIP	ATIS	Radar vectoring thru ADAMS Radar			ADAMS Approach (R)	ADAMS Tower	Ground
	132.72	120.7	121.2	128.85	129.35	118.7	121.9
	RNAV	Final Apch Crs <b>091<sup>^</sup></b>	Minimum Alt ELIXA <b>2000'</b> (1831')	RNAV/VNAV DA(H) <b>600'</b> (431')	Apt Elev <b>169'</b> Rwy 09 <b>169'</b>	TAA 25 NM IAF	
MISSED APCH: Climb to 2500' direct ALOKI and hold, or as directed by ATC.							
Alt Set: hPa (IN on req)		Rwy Elev: 6 hPa		Trans alt: 3000'			
Trans level: FL40 or FL45 as assigned by ATC.							



DIST to THR	5.0	4.0	3.0	2.0
ALTITUDE	1811'	1493'	1174'	856'



Gnd speed-Kts	70	90	100	120	140	160	HIALS PAPI	2500'	D	ALOKI
Descent Angle [3.00 <sup>^</sup> ]	372	478	531	637	743	849				
MAP at RW-9										

PANS OPS	STRAIGHT-IN LANDING RWY 09				CIRCLE-TO-LAND			
	RNAV/VNAV DA(H) <b>600'</b> (431')		RNAV MDA(H) <b>600'</b> (431')		Not Authorized North of Rwy 09-27			
	ALS out		ALS out		Max Kts	MDA(H)		
	A	1.6 km	1.6 km		100	600' (431')-1.6 km		
	B	1.6 km	1.6 km		135	670' (501')-1.6 km		
C	2.0 km	2.0 km		180	760' (591')-2.4 km			
D	2.4 km	2.4 km		205	860' (691')-3.6 km			

TBPB/BGI

JEPPESEN

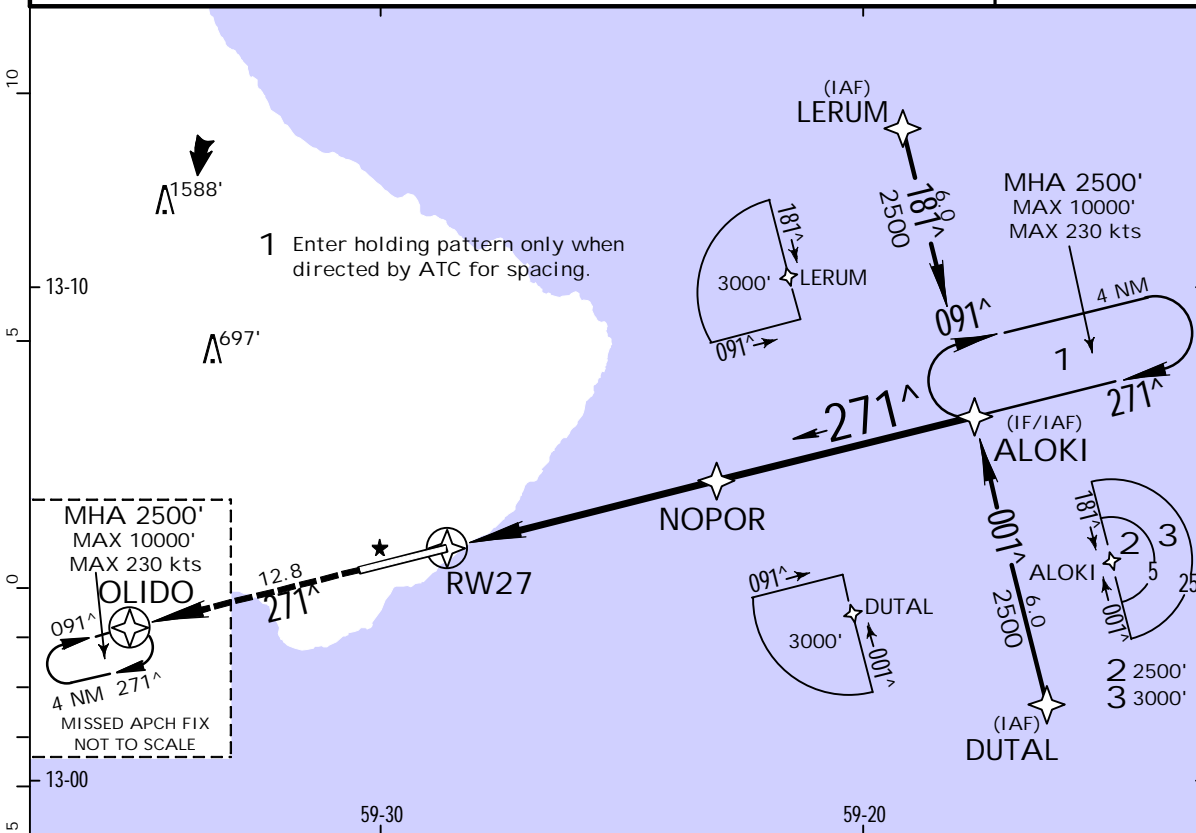
BRIDGETOWN, BARBADOS

GRANTLEY ADAMS INTL

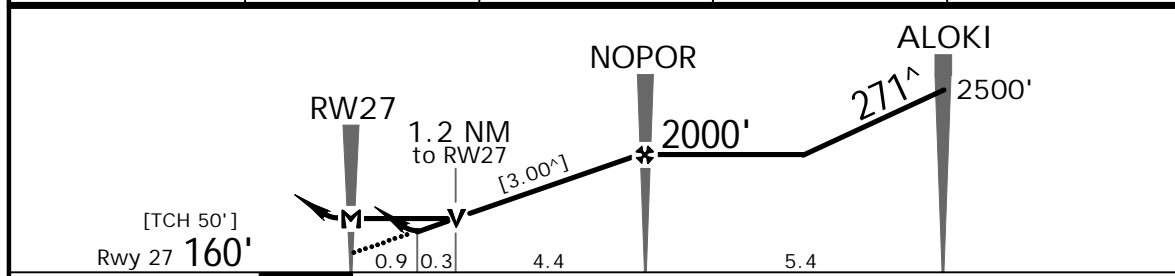
12 APR 13 (12-2)

RNAV (GNSS) Rwy 27

BRIEFING STRIP	ATIS	Radar vectoring thru ADAMS Radar			ADAMS Approach (R)	ADAMS Tower	Ground
	132.72	120.7	121.2	128.85	129.35	118.7	121.9
	RNAV	Final Apch Crs 271 <sup>^</sup>	Minimum Alt NOPOR 2000' (1840')	LNAV/VNAV DA(H) 500' (340')	Apt Elev 169' Rwy 27 160'	TAA 25 NM IAF	
MISSED APCH: Climb to 2500 direct OLIDO and hold, or as directed by ATC.							
Alt Set: hPa (IN on req)		Rwy Elev: 6 hPa			Trans alt: 3000'		
Trans level: FL40 or FL45 as assigned by ATC.							



DIST to THR	2.0	3.0	4.0	5.0
ALTITUDE	847'	1165'	1484'	1802'



Gnd speed-Kts	70	90	100	120	140	160	PAPI-L	2500'	D	OLIDO
Descent Angle [3.00 <sup>^</sup> ]	372	478	531	637	743	849				
MAP at RW27										

	STRAIGHT-IN LANDING RWY 27		Max Kts	CIRCLE-TO-LAND	
	LNAV/VNAV DA(H) 500' (340')	LNAV MDA(H) 600' (440')		Not Authorized North of Rwy 09-27	
A	1.6 km	1.6 km	100	600' (440') - 1.6 km	
B	2.0 km	2.0 km	135	670' (510') - 1.6 km	
C	2.4 km	2.4 km	180	760' (600') - 2.4 km	
D	2.4 km	2.4 km	205	860' (700') - 3.6 km	

**TBPB/BGI**

GRANTLEY ADAMS INTL

**JEPPesen**

12 APR 13

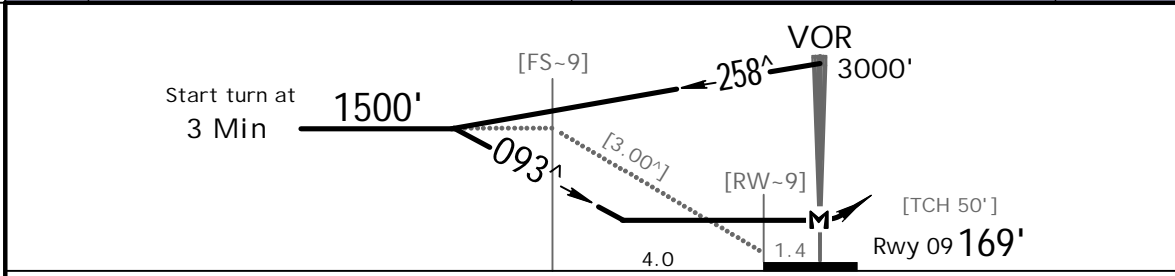
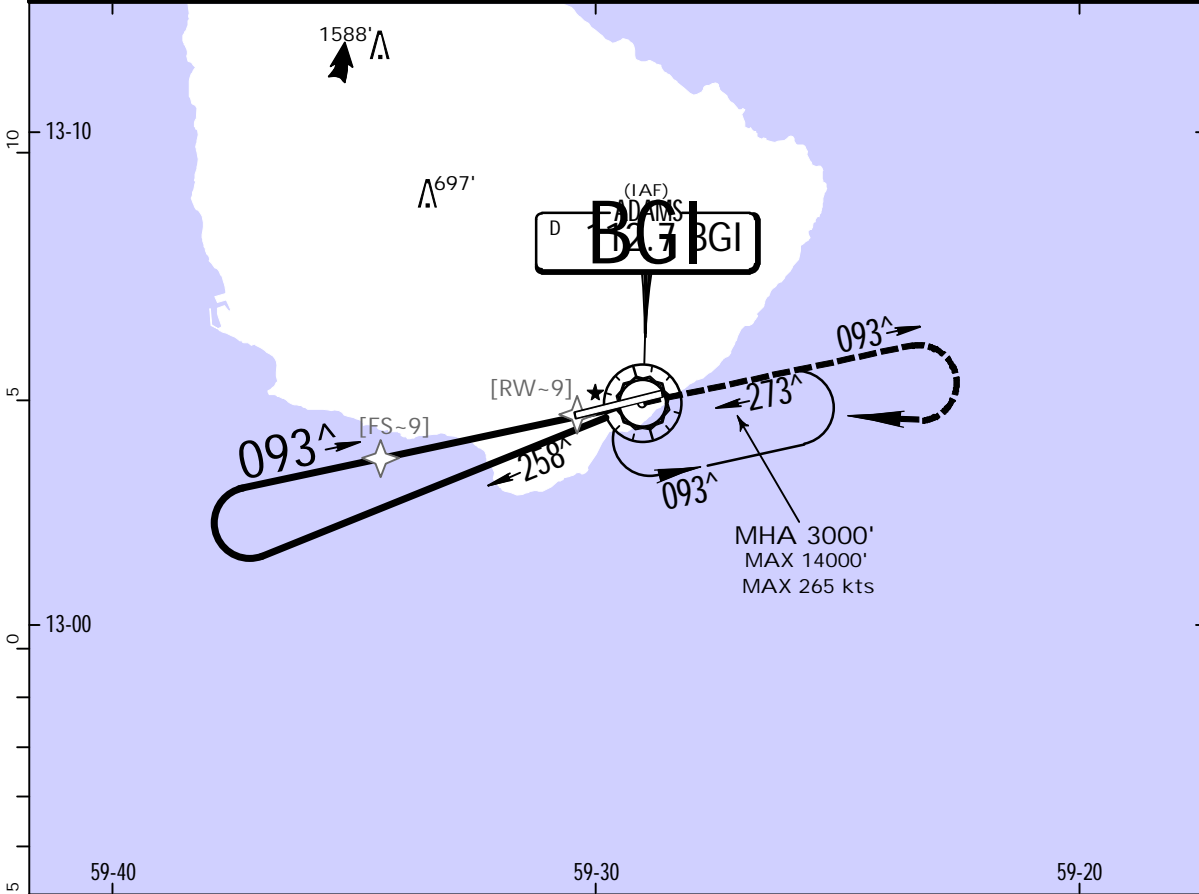
13-1

CAT A & B

**BRIDGETOWN, BARBADOS**

**VOR X Rwy 09**

BRIEFING STRIP™	ATIS	Radar vectoring thru ADAMS Radar			ADAMS Approach (R)	ADAMS Tower	Ground
	132.72	120.7	121.2	128.85	129.35	118.7	121.9
	VOR BGI 112.7	Final Apch Crs 093 <sup>^</sup>	No FAF	MDA(H) 640' (471')	Apt Elev 169' Rwy 09 169'	2600'	
	MISSED APCH: Climb to 3000' on track 093 <sup>^</sup> , then turn RIGHT direct BGI VOR and hold.						
Alt Set: hPa (IN on req)		Rwy Elev: 6 hPa		Trans alt: 3000'		MSA BGI VOR	
Trans level: FL 40 or FL 45 as assigned by ATC.							



Gnd speed-Kts	70	90	100	120	140	160		3000'	on 093 <sup>^</sup>	then RT	BGI 112.7
Descent Angle [3.00°]	372	478	531	637	743	849					
MAP at VOR											

PANS OPS	STRAIGHT-IN LANDING RWY 09				CIRCLE-TO-LAND			
	MDA(H) 640' (471')				Not Authorized North of Rwy 09-27			
	ALS out		Max Kts		MDA(H)			
	A	1.6 km	1.6 km	100	640' (471')-1.6 km			
B			135	670' (501')-1.6 km				
C	NA	NA						
D								

CHANGES: New procedure.

# TBPB/BGI

GRANTLEY ADAMS INTL



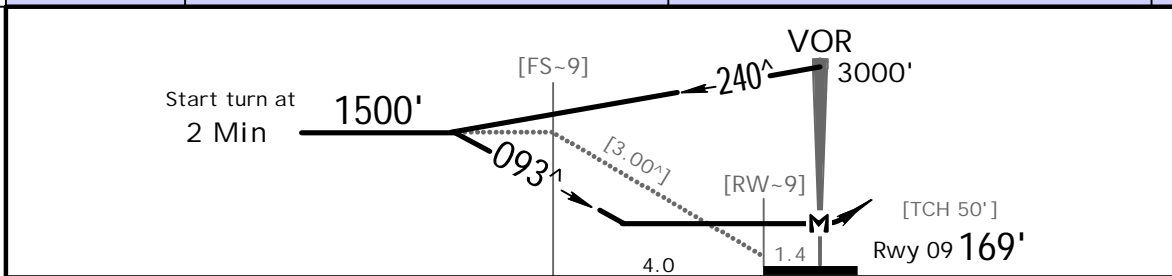
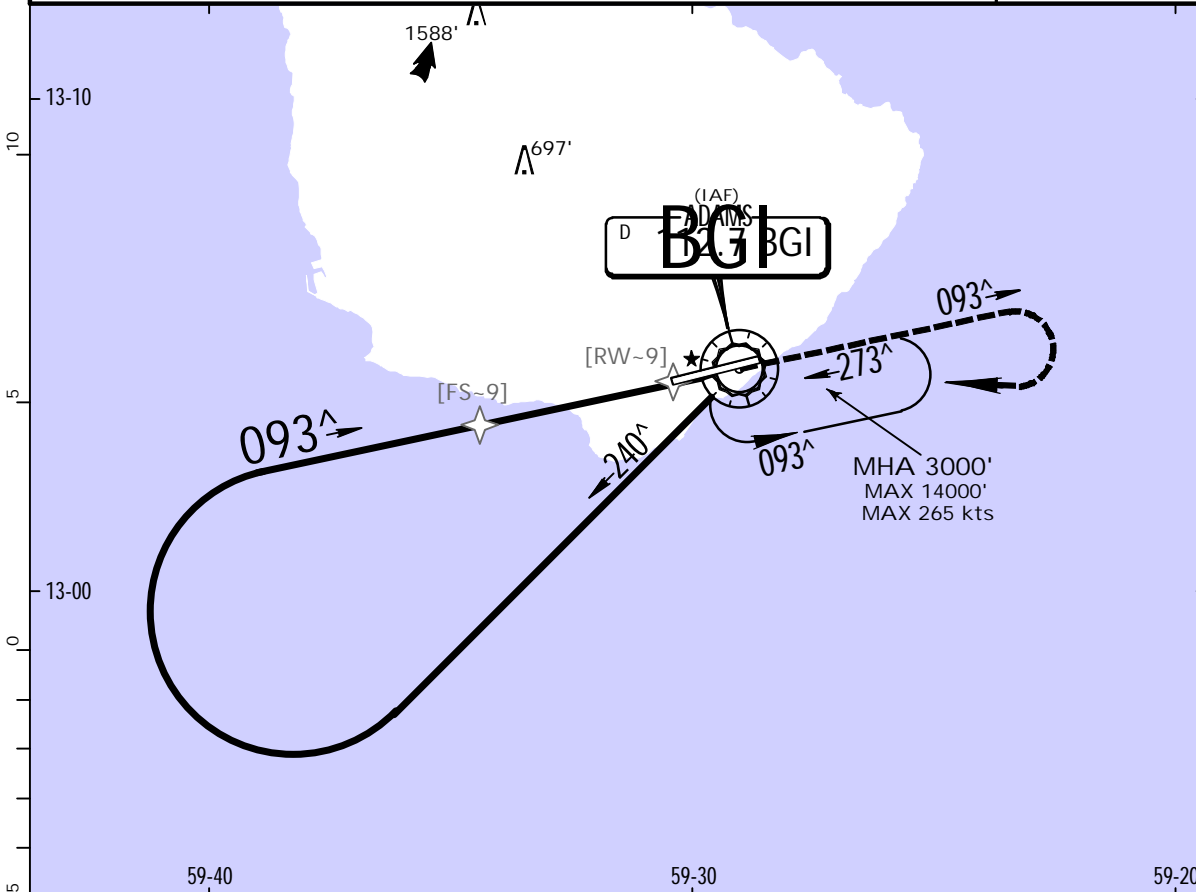
# BRIDGETOWN, BARBADOS

12 APR 13 (13-2)

CAT C & D

VOR Y Rwy 09

BRIEFING STRIP™	ATIS	Radar vectoring thru ADAMS Radar			ADAMS Approach (R)	ADAMS Tower	Ground
	132.72	120.7	121.2	128.85	129.35	118.7	121.9
	VOR BGI 112.7	Final Apch Crs 093 <sup>^</sup>	No FAF	MDA(H) 640' (471')	Apt Elev 169' Rwy 09 169'	2600'	
MISSED APCH: Climb to 3000' on track 093 <sup>^</sup> , then turn RIGHT direct BGI VOR and hold.							
Alt Set: hPa (IN on req)				Rwy Elev: 6 hPa	Trans alt: 3000'		MSA BGI VOR
Trans level: FL 40 or FL 45 as assigned by ATC.							



Gnd speed-Kts	70	90	100	120	140	160	HIALS 3000'	PAPI	on 093 <sup>^</sup> then RT	BGI 112.7
Descent Angle [3.00°]	372	478	531	637	743	849				
MAP at VOR										

PANS OPS	STRAIGHT-IN LANDING RWY 09				CIRCLE-TO-LAND			
	MDA(H) 640' (471')				Not Authorized North of Rwy 09-27			
			ALS out		Max Kts	MDA(H)		
	A	NA	NA		A	NA		
	B				B			
C	1.6 km	2.0 km		180	760' (591')-2.4 km			
D	2.0 km	2.4 km		205	860' (691')-3.6 km			

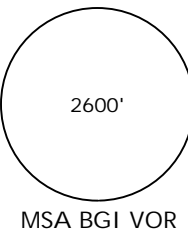
**TBPB/BGI**

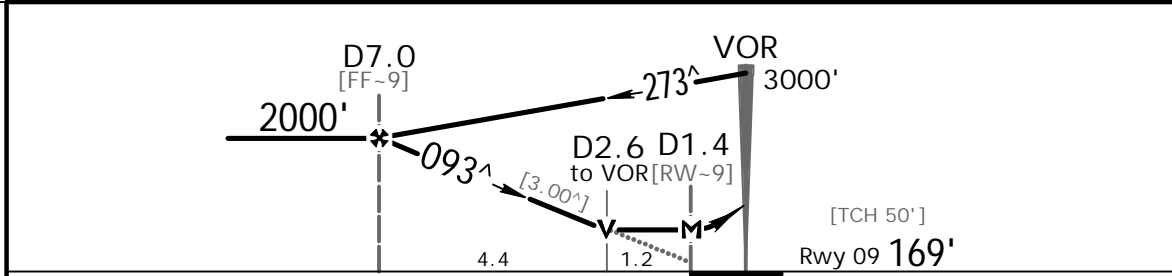
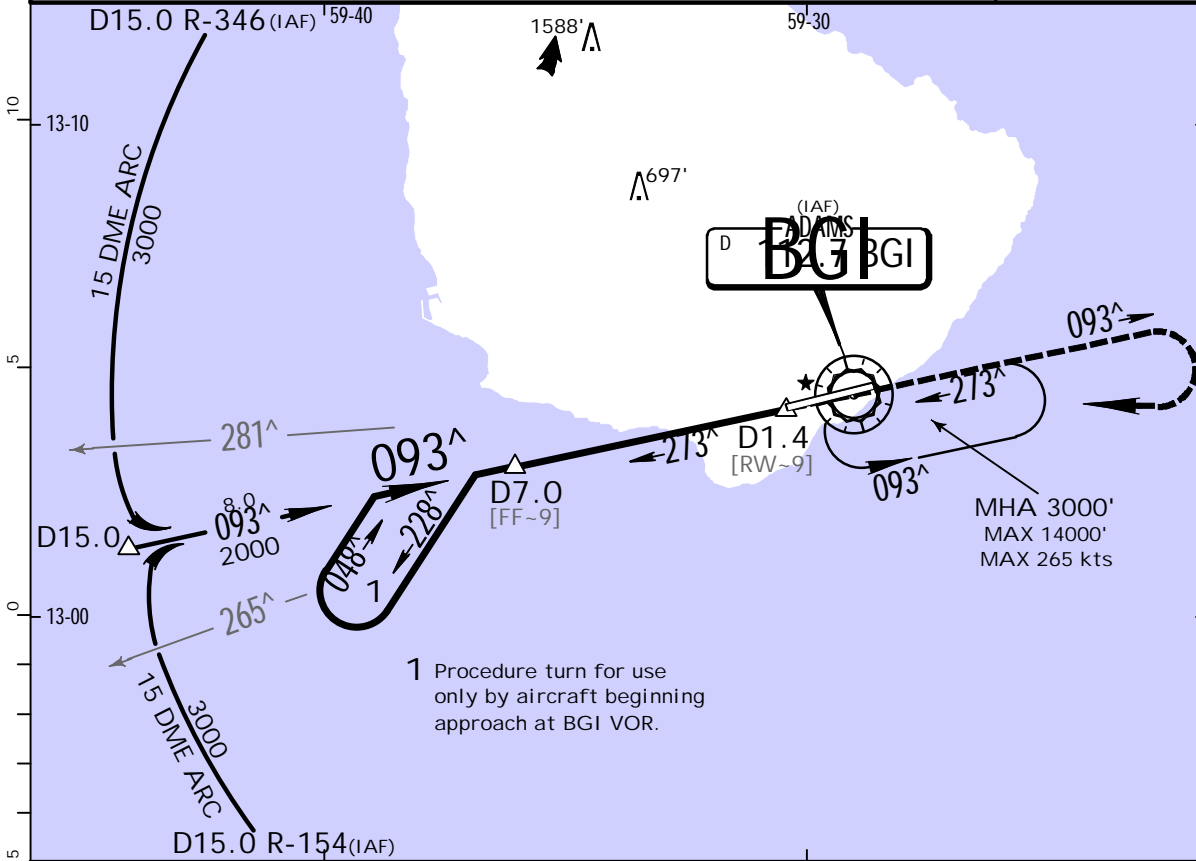
GRANTLEY ADAMS INTL

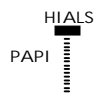
**JEPPesen**

12 APR 13 (13-3)

**BRIDGETOWN, BARBADOS**  
VOR Z Rwy 09

BRIEFING STRIP™	ATIS	Radar vectoring thru ADAMS Radar			ADAMS Approach (R)	ADAMS Tower	Ground
	132.72	120.7	121.2	128.85	129.35	118.7	121.9
	VOR BGI 112.7	Final Apch Crs 093 <sup>^</sup>	Minimum Alt D7.0 2000' (1831')	MDA(H) 600' (431')	Apt Elev 169' Rwy 09 169'		
MISSED APCH: Climb to 3000' on track 093 <sup>^</sup> , then turn RIGHT direct BGI VOR and hold.							
Alt Set: hPa (IN on req)		Rwy Elev: 6 hPa		Trans alt: 3000'			
Trans level: FL 40 or FL 45 as assigned by ATC.							
1. DME required.							



Gnd speed-Kts	70	90	100	120	140	160		3000' on 093 <sup>^</sup> then RT	BGI 112.7
Descent Angle [3.00 <sup>^</sup> ]	372	478	531	637	743	849			
MAP at D1.4									

STRAIGHT-IN LANDING RWY 09				CIRCLE-TO-LAND			
MDA(H) 600' (431')				Not Authorized North of Rwy 09-27			
	ALS out		Max Kts	MDA(H)			
A	1.2 km	1.6 km	100	600' (431')-1.6 km			
B			135	670' (501')-1.6 km			
C	1.6 km	2.0 km	180	760' (591')-2.4 km			
D	2.0 km	2.4 km	205	860' (691')-3.6 km			

PANS OPS

TBPB/BGI

GRANTLEY ADAMS INTL

JEPPesen

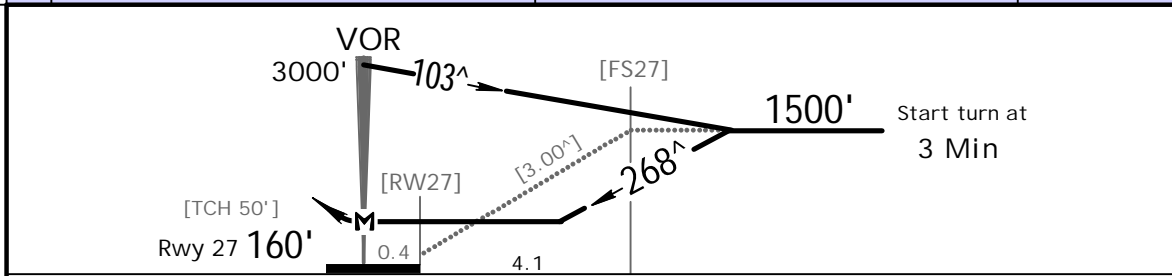
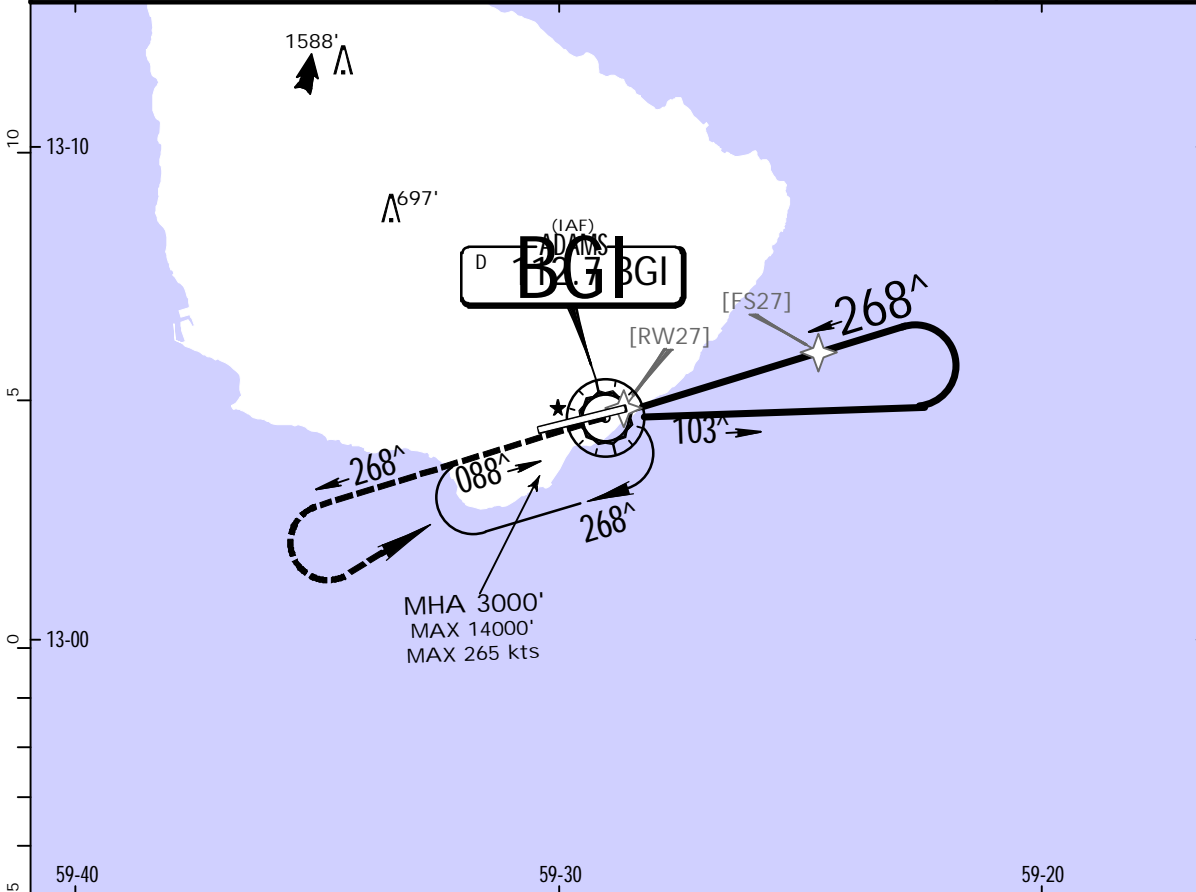
BRIDGETOWN, BARBADOS

12 APR 13 13-4

CAT A & B

VOR X Rwy 27

BRIEFING STRIP™	ATIS	Radar vectoring thru ADAMS Radar			ADAMS Approach (R)	ADAMS Tower	Ground
	132.72	120.7	121.2	128.85	129.35	118.7	121.9
	VOR BGI 112.7	Final Apch Crs 268 <sup>^</sup>	No FAF	MDA(H) 640' (480')	Apt Elev 169' Rwy 27 160'	2600'	
	MISSED APCH: Climb to 3000' on track 268 <sup>^</sup> , then turn LEFT direct BGI VOR and hold.						
Alt Set: hPa (IN on req)			Rwy Elev: 6 hPa		Trans alt: 3000'		MSA BGI VOR
Trans level: FL 40 or FL 45 as assigned by ATC.							



Gnd speed-Kts	70	90	100	120	140	160	PAPI-L	3000'	on 268 <sup>^</sup> then	LT	BGI 112.7
Descent Angle [3.00°]	372	478	531	637	743	849					
MAP at VOR											

STRAIGHT-IN LANDING RWY 27				CIRCLE-TO-LAND			
MDA(H) 640' (480')				Not Authorized North of Rwy 09-27			
A	1.6 km			Max Kts	MDA(H)		
B	1.6 km			100	640' (471')-1.6 km		
C				135	670' (501')-1.6 km		
D	NA			C	NA		
	NA			D	NA		

CHANGES: New procedure.

JEPPesen, 2013. ALL RIGHTS RESERVED.

# TBPB/BGI

GRANTLEY ADAMS INTL



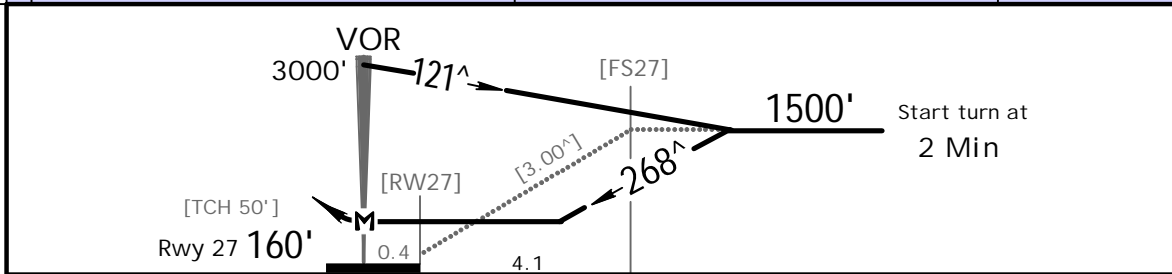
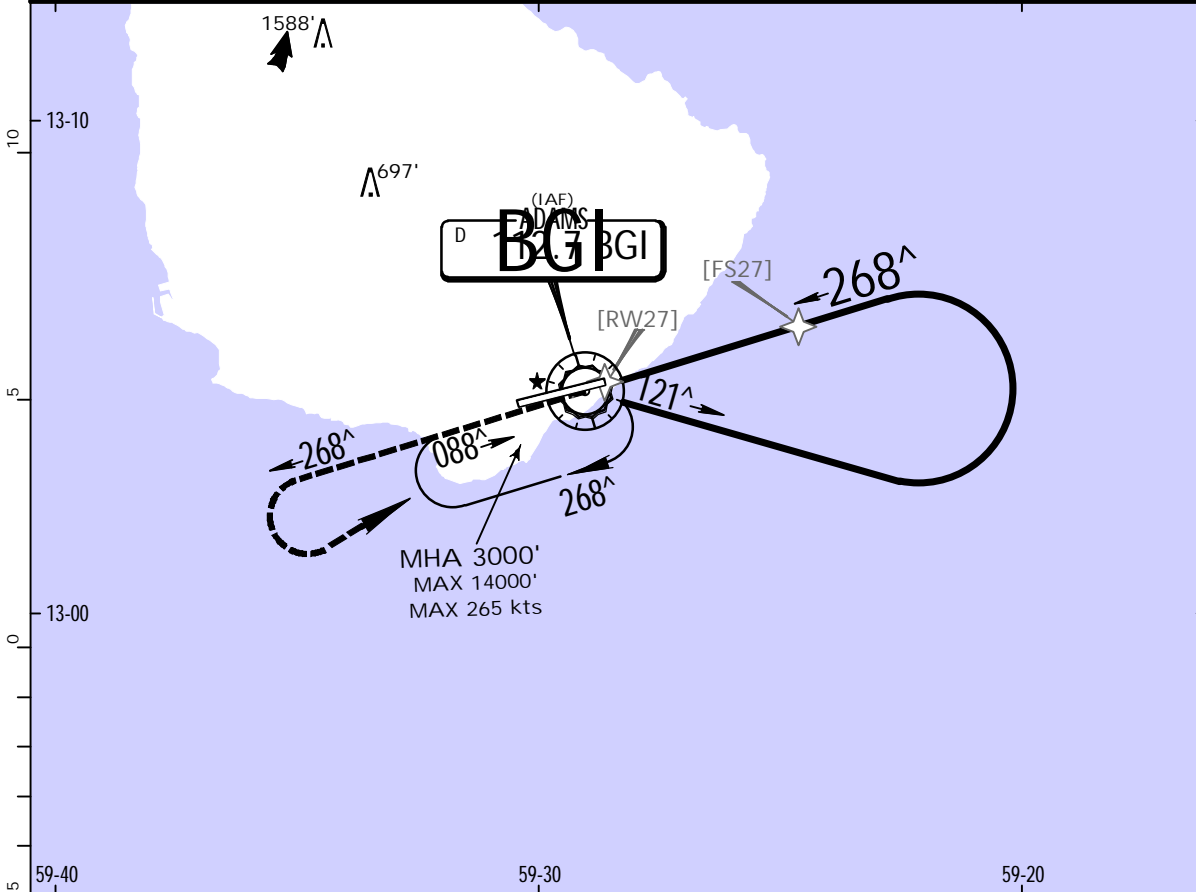
# BRIDGETOWN, BARBADOS

12 APR 13 (13-5)

CAT C & D

VOR Y Rwy 27

BRIEFING STRIP™	ATIS	Radar vectoring thru ADAMS Radar			ADAMS Approach (R)	ADAMS Tower	Ground
	132.72	120.7	121.2	128.85	129.35	118.7	121.9
	VOR BGI 112.7	Final Apch Crs 268 <sup>^</sup>	No FAF	MDA(H) 640' (480')	Apt Elev 169' Rwy 27 160'	2600'	
	MISSED APCH: Climb to 3000' on track 268 <sup>^</sup> , then turn LEFT direct BGI VOR and hold.						
Alt Set: hPa (IN on req)			Rwy Elev: 6 hPa		Trans alt: 3000'		MSA BGI VOR
Trans level: FL 40 or FL 45 as assigned by ATC.							



Gnd speed-Kts	70	90	100	120	140	160	PAPI-L	3000'	on 268 <sup>^</sup>	then LT	BGI 112.7
Descent Angle [3.00°]	372	478	531	637	743	849					
MAP at VOR											

STRAIGHT-IN LANDING RWY 27				CIRCLE-TO-LAND			
MDA(H) 640' (480')				Not Authorized North of Rwy 09-27			
A	NA			Max Kts	MDA(H)		
	NA				NA		
B							
C	1.6 km			180	760' (591')-2.0 km		
D	2.0 km			205	850' (681')-3.6 km		

PANS OPS

TBPB/BGI

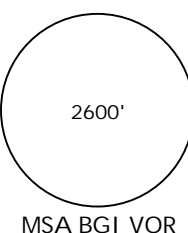
GRANTLEY ADAMS INTL

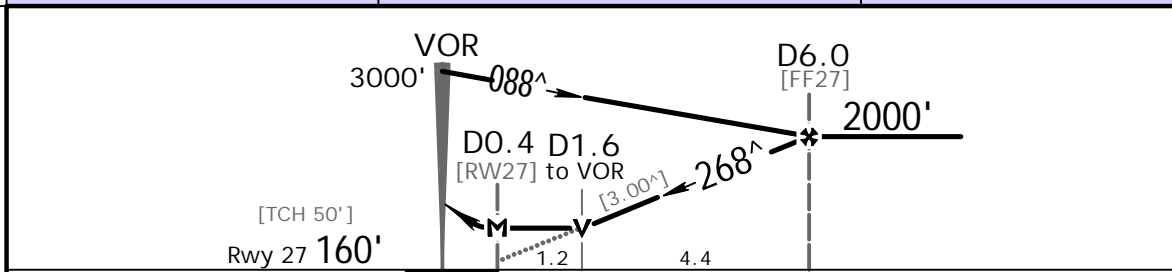
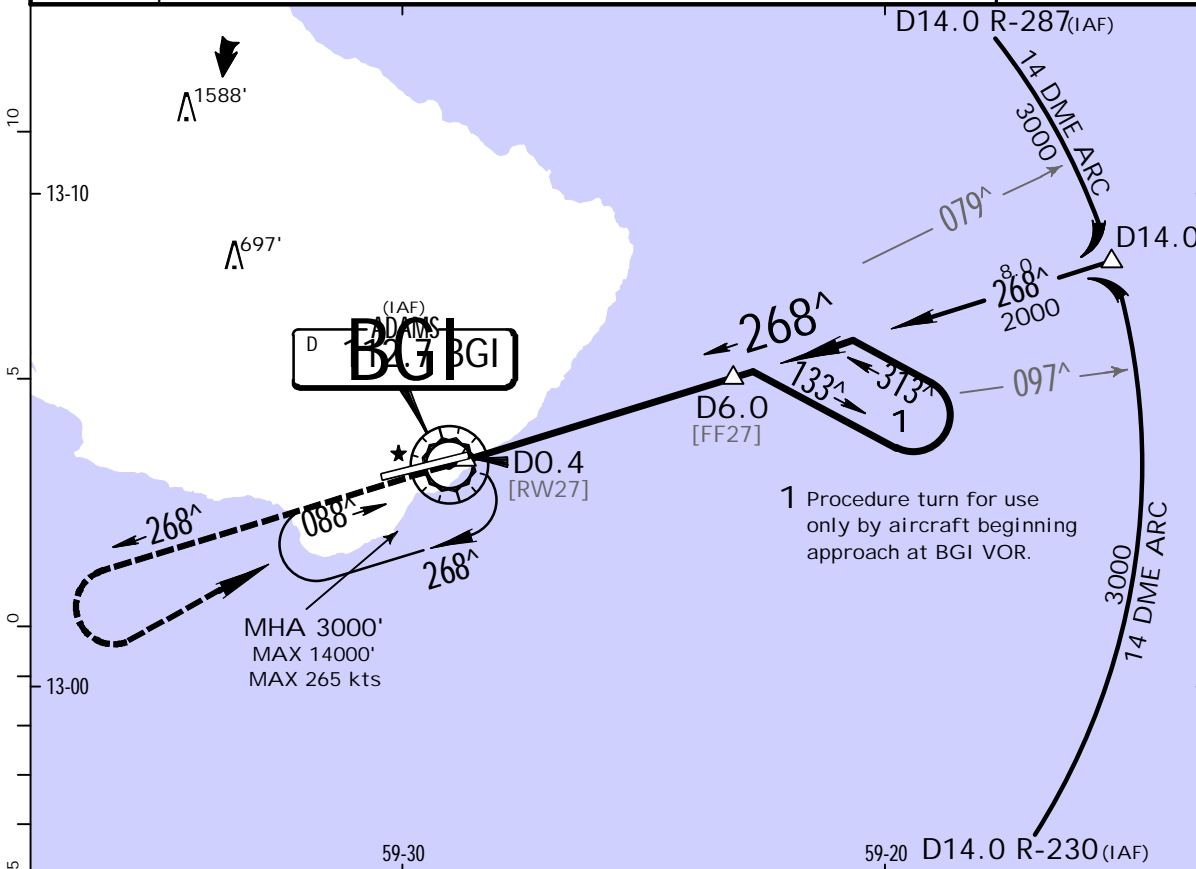
JEPPesen

BRIDGETOWN, BARBADOS

12 APR 13 (13-6)

VOR Z Rwy 27

BRIEFING STRIP™	ATIS	Radar vectoring thru ADAMS Radar			ADAMS Approach (R)	ADAMS Tower	Ground
	132.72	120.7	121.2	128.85	129.35	118.7	121.9
	VOR BGI 112.7	Final Apch Crs 268 <sup>^</sup>	Minimum Alt D6.0 2000' (1840')	MDA(H) 600' (440')	Apt Elev 169' Rwy 27 160'	 2600' MSA BGI VOR	
	MISSED APCH: Climb to 3000' on track 268 <sup>^</sup> , then turn LEFT direct BGI VOR and hold.						
Alt Set: hPa (IN on req)		Rwy Elev: 6 hPa		Trans alt: 3000'			
Trans level: FL 40 or FL 45 as assigned by ATC. 1. DME required.							



Gnd speed-Kts	70	90	100	120	140	160	PAPI-L	3000'	on 268 <sup>^</sup>	then LT	BGI 112.7
Descent Angle [3.00 <sup>^</sup> ]	372	478	531	637	743	849					
MAP at D0.4											

STRAIGHT-IN LANDING RWY 27			CIRCLE-TO-LAND		
MDA(H) 600' (440')			Not Authorized North of Rwy 09-27		
A	1.2 km	100	600' (431')-1.6 km		
B		135	670' (501')-1.6 km		
C	1.6 km	180	760' (591')-2.4 km		
D	2.0 km	205	860' (691')-3.6 km		

PANS OPS

CHANGES: New procedure.

JEPPesen, 2013. ALL RIGHTS RESERVED.



## Chart changes since cycle 12-2015

ADD = added chart, REV = revised chart, DEL = deleted chart.

ACT    PROCEDURE IDENT

INDEX

REV DATE

EFF DATE

**BRIDGETOWN, (GRANTLEY ADAMS INTL - TBPB)**

## TERMINAL CHART CHANGE NOTICES

### Chart Change Notices for Airport TBPB

**Type:** Terminal

**Effectivity:** Temporary

**Begin Date:** Immediately

**End Date:** Until Further Notice

(APT) Rwy 09 has TDZ lights.

**Type:** Terminal

**Effectivity:** Permanent

**Begin Date:** Immediately

**End Date:** No end date

Change: HIALS to ALS Rwy 09.