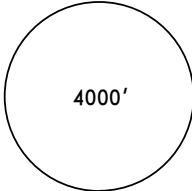
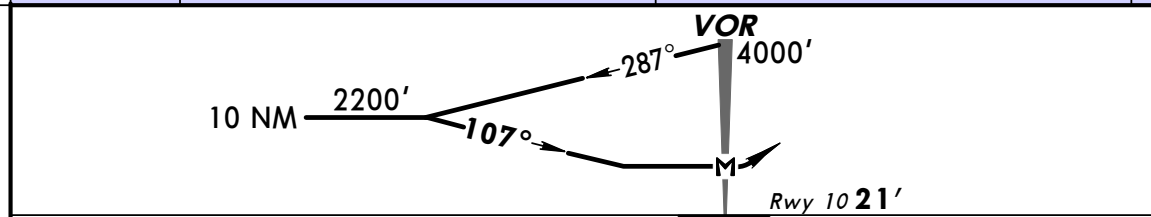
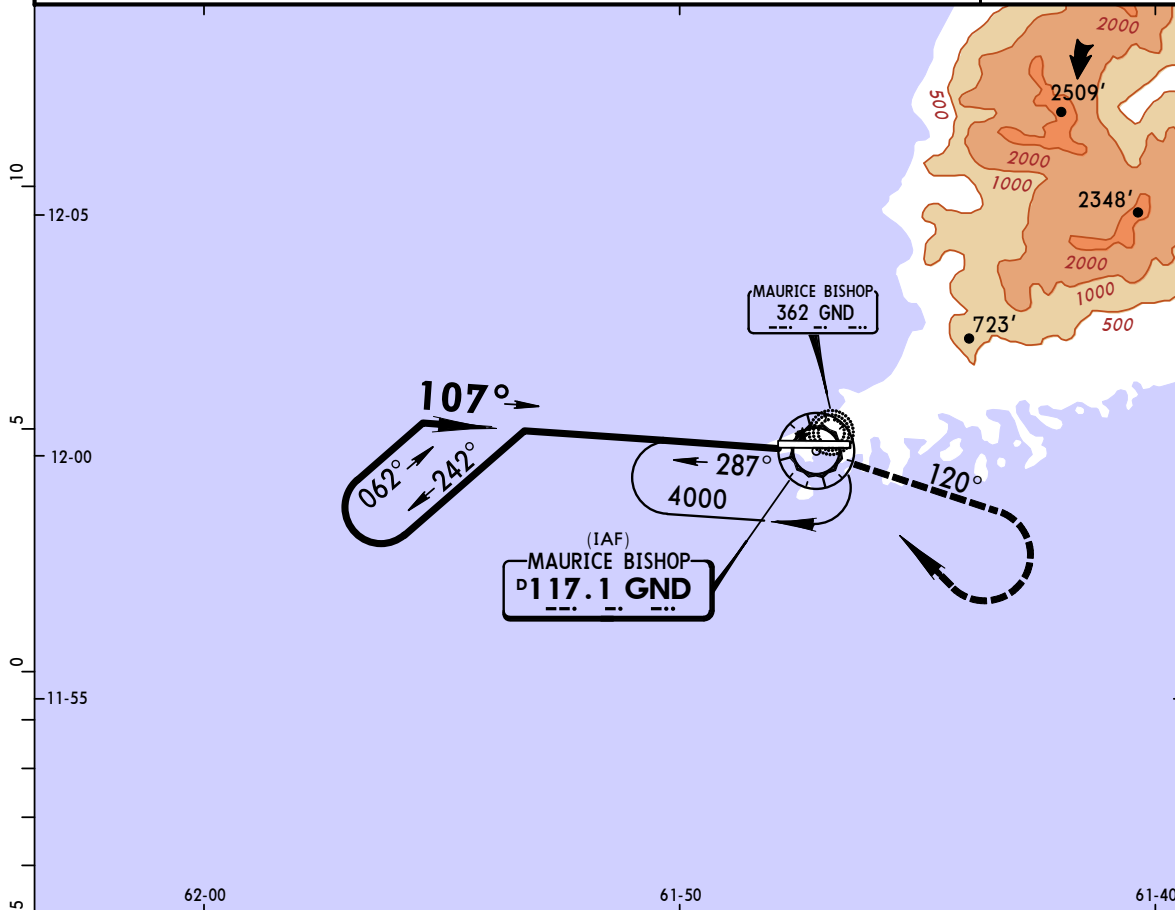


**TGPY/GND**  
**MAURICE BISHOP INTL**

**JEPPESSEN**  
7 AUG 09 **(13-2)**

**ST GEORGES, GRENADA**  
**VOR Rwy 10**

*MAURICE BISHOP Approach		*MAURICE BISHOP Tower		*Ground	
119.4		118.9		121.9	
VOR GND <b>117.1</b>	Final Apch Crs <b>107°</b>	No FAF	MDA(H) <b>640' (619')</b>	Apt Elev <b>41'</b> Rwy 10 <b>21'</b>	 <p>4000'</p> <p>MSA GND VOR</p>
<p><b>MISSED APCH:</b> Climbing RIGHT turn outbound on GND VOR R-120 to 2000', then climbing RIGHT turn to return to GND VOR at 4000' or as directed by ATC.</p>					
<p>Alt Set: hPa (IN on req) Rwy Elev: 1 hPa Trans level: By ATC Trans alt: 4000'</p> <p>1. CAUTION: High terrain north through east from airport.</p>					



ALS	<b>2000'</b>	GND
PAPI	RT	on <b>117.1</b>
		<b>R-120</b>

STRAIGHT-IN LANDING RWY 10		CIRCLE-TO-LAND	
MDA(H) <b>640' (619')</b>		Not Authorized North of Extended Centerline Rwy 10 Only	
ALS out		MDA(H)	
A	2800m	100	<b>680' (639') - 2800m</b>
B		135	
C		180	<b>680' (639') - 3200m</b>
D		205	

PANS OPS