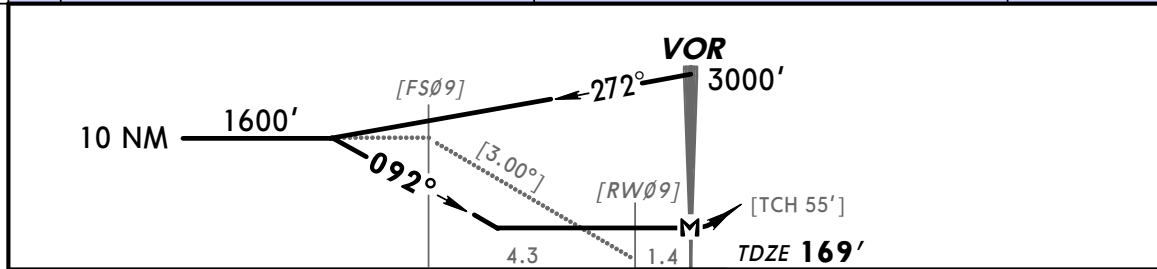
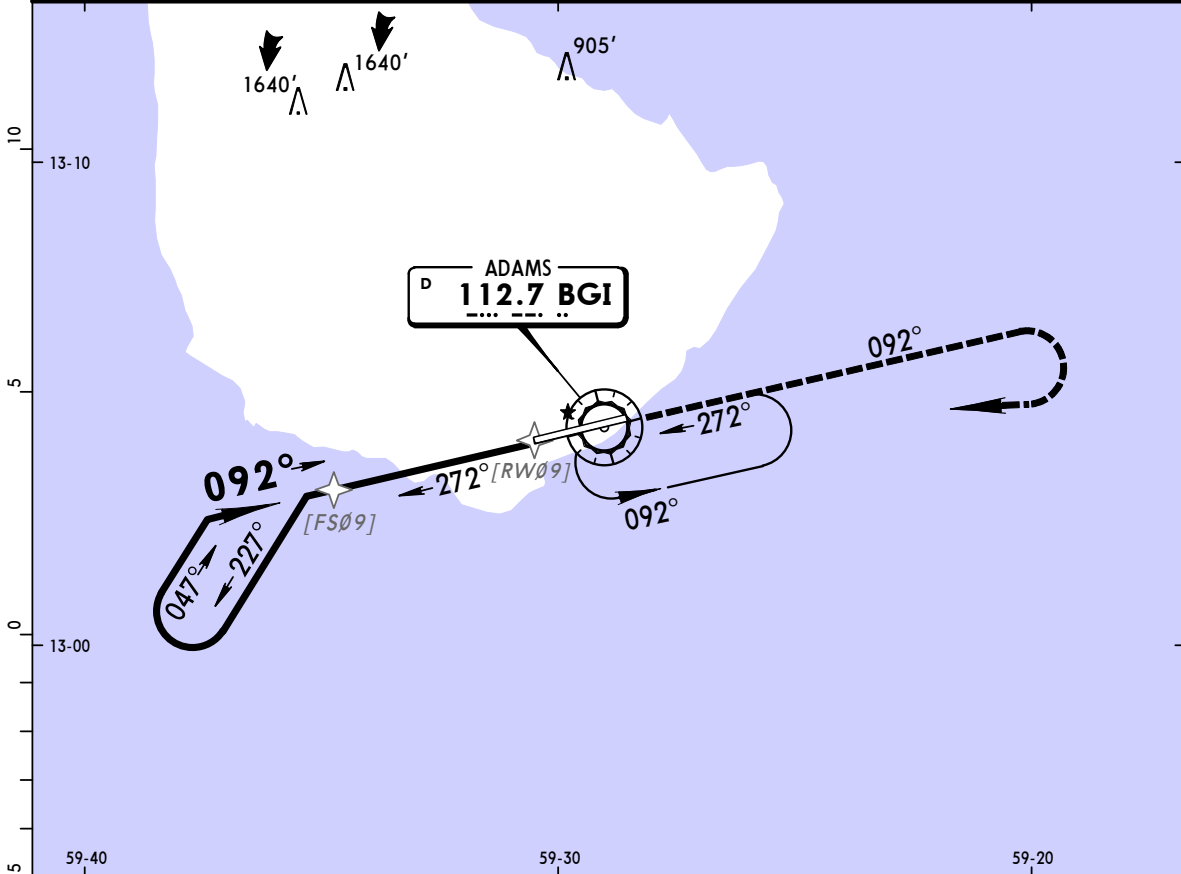


TBPB/BGI (BRIDGETOWN)
GRANTLEY ADAMS INTL



BARBADOS
VOR Rwy 09

BRIEFING STRIP™	ATIS	Radar vectoring thru ADAMS Radar			ADAMS Approach (R)	ADAMS Tower	Ground
	132.72	120.7	121.2	128.85	129.35	118.7	121.9
	VOR BGI 112.7	Final Apch Crs 092°	No FAF	MDA(H) 600' (431')	Apt Elev 169' TDZE 169'	3000'	
	MISSED APCH: Climb to 3000' outbound on BGI VOR R-092, then turn RIGHT to BGI VOR and hold.						
Alt Set: hPa (IN on req)			TDZ Elev: 6 hPa		Trans alt: 3000'		MSA BGI VOR
Trans level: FL 40 or FL 45 as assigned by ATC.							



Gnd speed-Kts	70	90	100	120	140	160	HIALS PAPI	3000' on 112.7 then RT BGI 112.7 R-092
Descent angle [3.00°]	372	478	531	637	743	849		
MAP at VOR								

STRAIGHT-IN LANDING RWY 09		CIRCLE-TO-LAND	
MDA(H) 600' (431')		Not Authorized North of Rwy 09-27	
	ALS out	Max Kts	MDA(H)
A	1.2 km	100	700' (531')-1.6 km
B	1.6 km	135	760' (591')-2.4 km
C	1.6 km	180	860' (691')-3.6 km
D	2.0 km	205	

PANS OPS