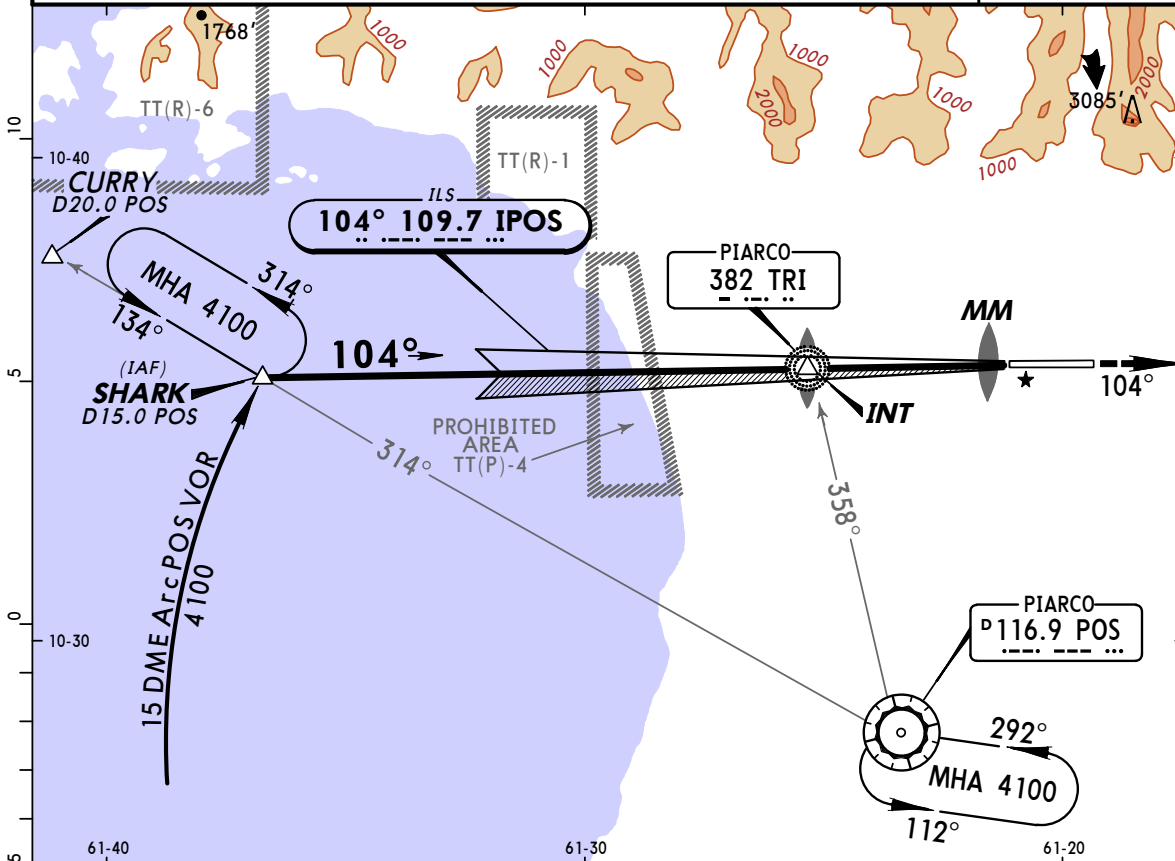


TTPP/POS
PIARCO INTL

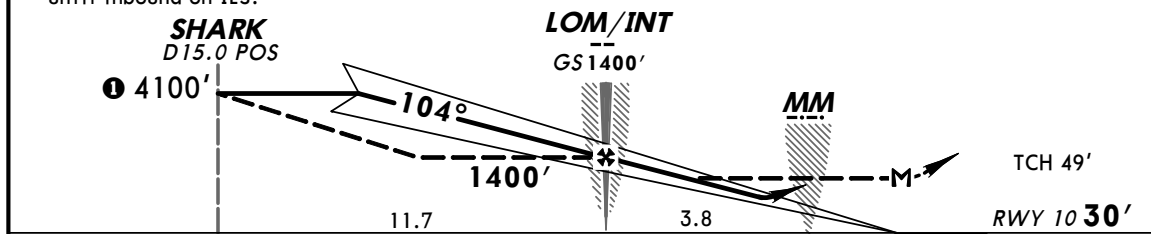
JEPPESEN
13 NOV 09 **(11-1)**

PORT OF SPAIN, TRINIDAD
VOR ÎLS Rwy 10

ATIS 126.7		PIARCO Approach 119.0		PIARCO Tower 118.1		Ground 121.9
LOC IPOS 109.7	Final Apch Crs 104°	GS LOM/INT 1400' (1370')	ILS DA(H) 265' (235')	Apt Elev 58'	RWY 10 30'	
MISSED APCH: Climb on 104° to 2200', then RIGHT climbing turn to 4100' to POS VOR or as directed by ATC.						4100'
Alt Set: hPa		Rwy Elev: 1 hPa		Trans level: FL 55		Trans alt: 4100'
						MSA TRI LOM



1 Descent below 4100' not authorized until inbound on ILS.



Gnd speed-Kts	70	90	100	120	140	160	HIALS PAPI 2200' on 104° then 4100' POS 116.9 RT
GS	3.00°	377	484	538	646	753	
LOM/INT to MAP	4.2	3:36	2:48	2:31	2:06	1:48	1:34

ILS DA(H) 265' (235')				LOC (GS out) MDA(H) 530' (500')			
FULL		ALS out		ALS out			

PANS OPS	A	1 NM		1½ NM	
	B				
	C				
	D				