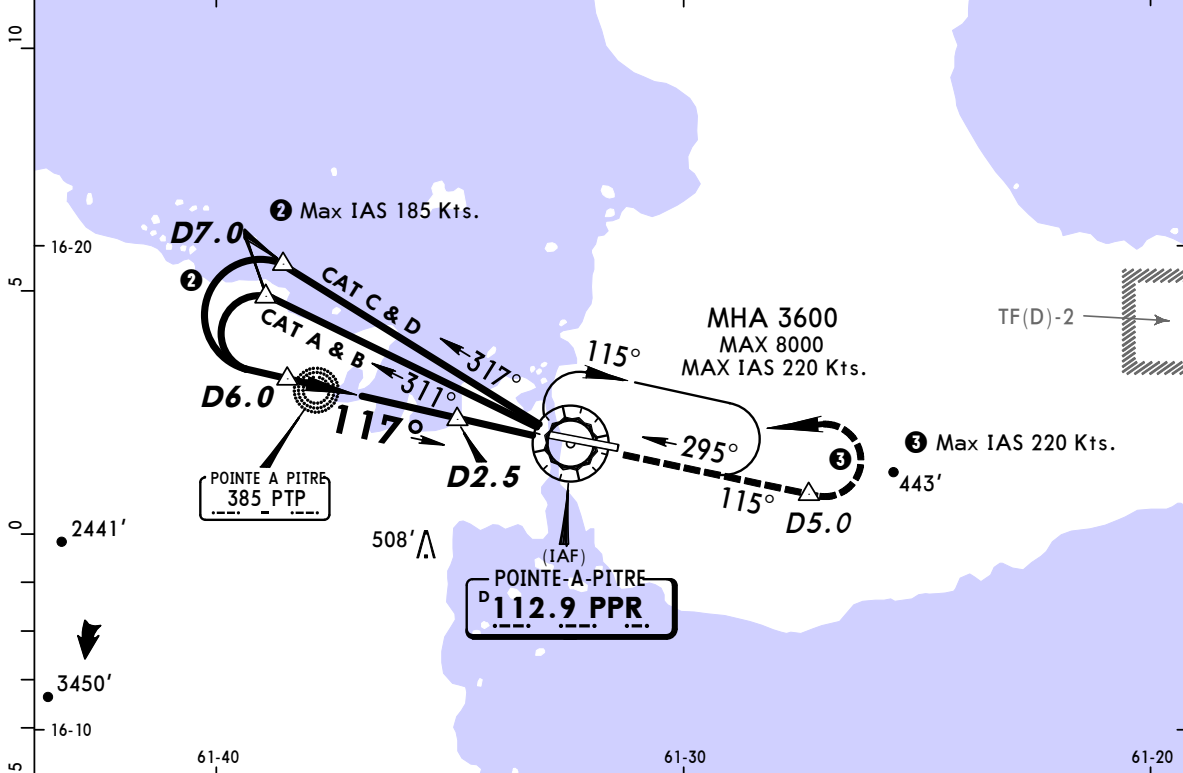


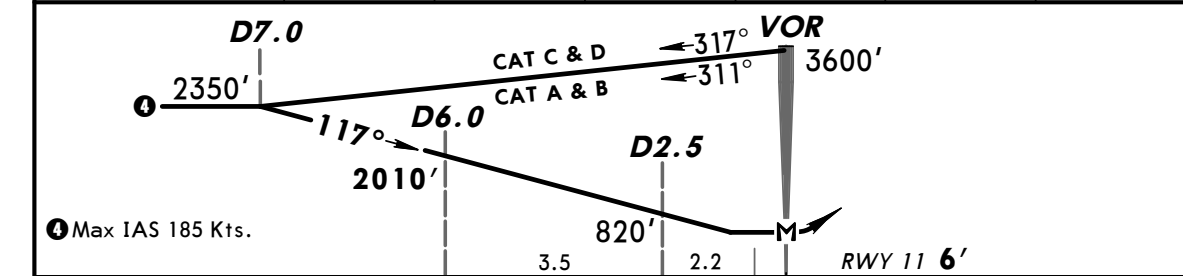
TFFR/PTP
LE RAIZET

JEPPESEN **POINTE-A-PITRE, GUADELOUPE**
18 MAY 07 **(13-1)** **VOR DME** (ILS UNUSABLE) **Rwy 11**

ATIS 127.6	RAIZET Approach (R) 121.3 119.05		RAIZET Tower 118.4	Ground 121.85
VOR PPR 112.9	Final Apch Crs 117°	Minimum Alt D6.0 2010' (2004')	MDA(H) 350' (344')	Apt Elev 35' Rwy 11 6'
MISSED APCH: Climb outbound on PPR VOR R-115 to D5.0, then turn LEFT climbing to 3600' and rejoin the holding pattern. Climb to 1200' prior to level acceleration or in accordance with instructions from CONTROL. Max IAS in missed approach turn 220 Kts.				<p>MSA PPR VOR ① 2000' within 7 NM</p>
Alt Set: hPa Rwy Elev: 0 hPa Trans level: By ATC Trans alt: 9000' 1. Approach not aligned with runway centerline. 2. Derogatory procedure. 3. No intermediate approach.				



PPR DME	7.0	6.0	5.0	4.0	3.0	2.0
ALTITUDE	2350'	2010'	1670'	1330'	990'	650'



Gnd speed-Kts	70	90	100	120	140	160	PAPI-L	PPR on 112.9 R-115	D5.0
Descent Gradient 5.6%	402	517	574	689	804	919			
MAP at VOR									

PANS OPS	JAR-OPS STRAIGHT-IN LANDING RWY 11		CIRCLE-TO-LAND	
	MDA(H) 350' (344')		Max Kts	MDA(H)
	A	RVR 1500m	110	610' (565') - V1500m
	B	RVR 1600m	135	610' (565') - V1600m
	C	RVR 1800m	180	910' (875') - V2400m
D	RVR 2000m	205	910' (875') - V3600m	