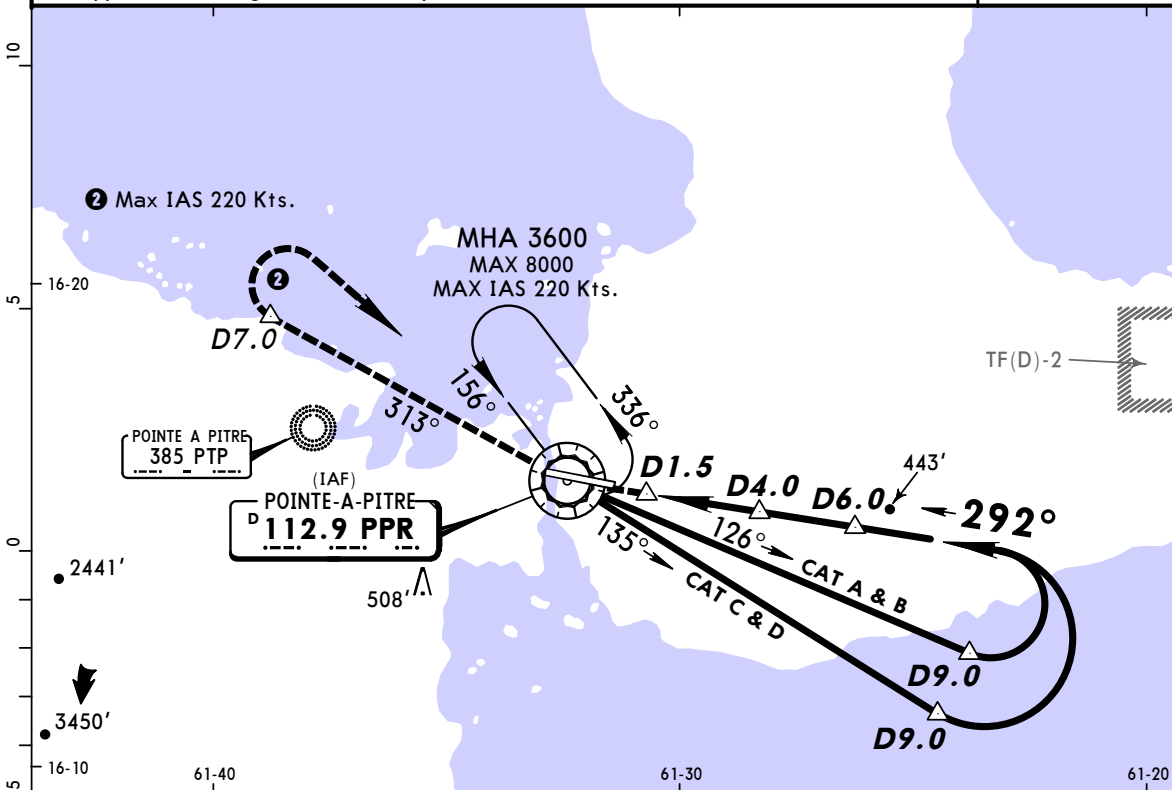


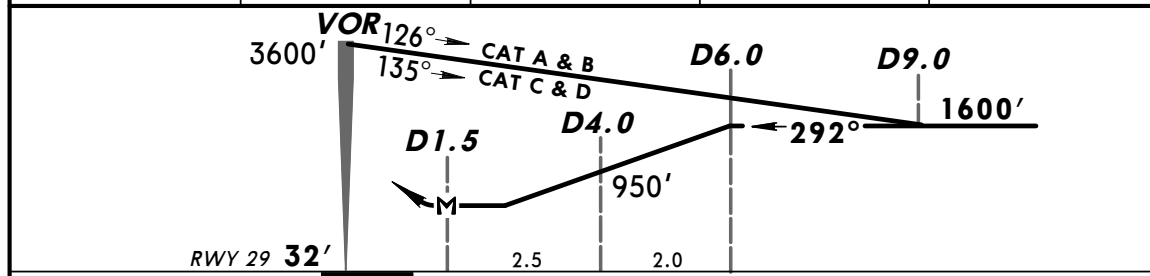
**TFFR/PTP**  
**LE RAIZET**

**JEPPESEN** **POINTE-A-PITRE, GUADELOUPE**  
18 MAY 07 (13-2)  
**VOR DME Rwy 29**

ATIS 127.6		RAIZET Approach (R) 121.3 119.05		RAIZET Tower 118.4	Ground 121.85
VOR PPR <b>112.9</b>	Final Apch Crs <b>292°</b>	Minimum Alt <b>D6.0</b> 1600' (1568')	MDA(H) <b>590' (558')</b>	Apt Elev 35' Rwy 29 <b>32'</b>	
<b>MISSED APCH:</b> Climb outbound on PPR VOR R-313 to D7.0 then turn RIGHT and return to PPR VOR climbing to 3600', or in accordance with instructions from CONTROL. Max IAS in missed approach turn 220 Kts.					
Alt Set: hPa		Rwy Elev: 1 hPa	Trans level: By ATC		Trans alt: 9000'
1. Approach not aligned with runway centerline.					



PPR DME	3.0	4.0	5.0	6.0
ALTITUDE	630'	950'	1270'	1580'



Gnd speed-Kts	70	90	100	120	140	160	PAPI-L	↑ on 112.9 PPR R-313 D7.0
Descent Gradient 5.2%	377	485	539	647	755	862		
MAP at D1.5								

<b>PANS OPS</b>	<b>JAR-OPS</b> STRAIGHT-IN LANDING RWY 29		CIRCLE-TO-LAND	
	MDA(H) <b>590' (558')</b>		Max Kts	MDA(H)
	A	RVR 1500m	110	600' (565') - V1500m
	B		135	600' (565') - V1600m
	C	RVR 2000m	180	910' (875') - V2400m
D		205	910' (875') - V3600m	