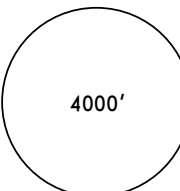
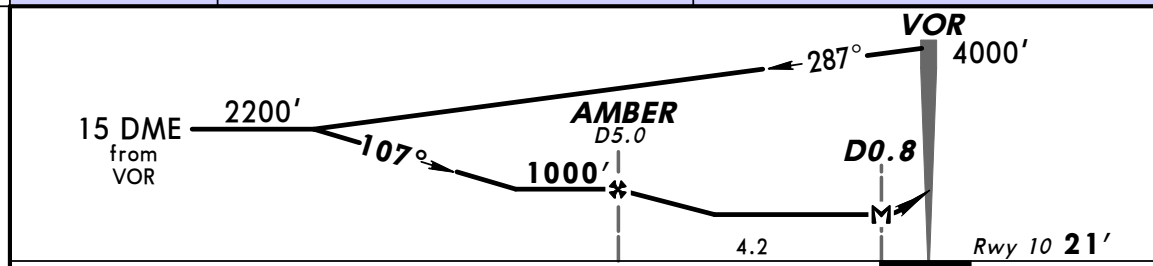
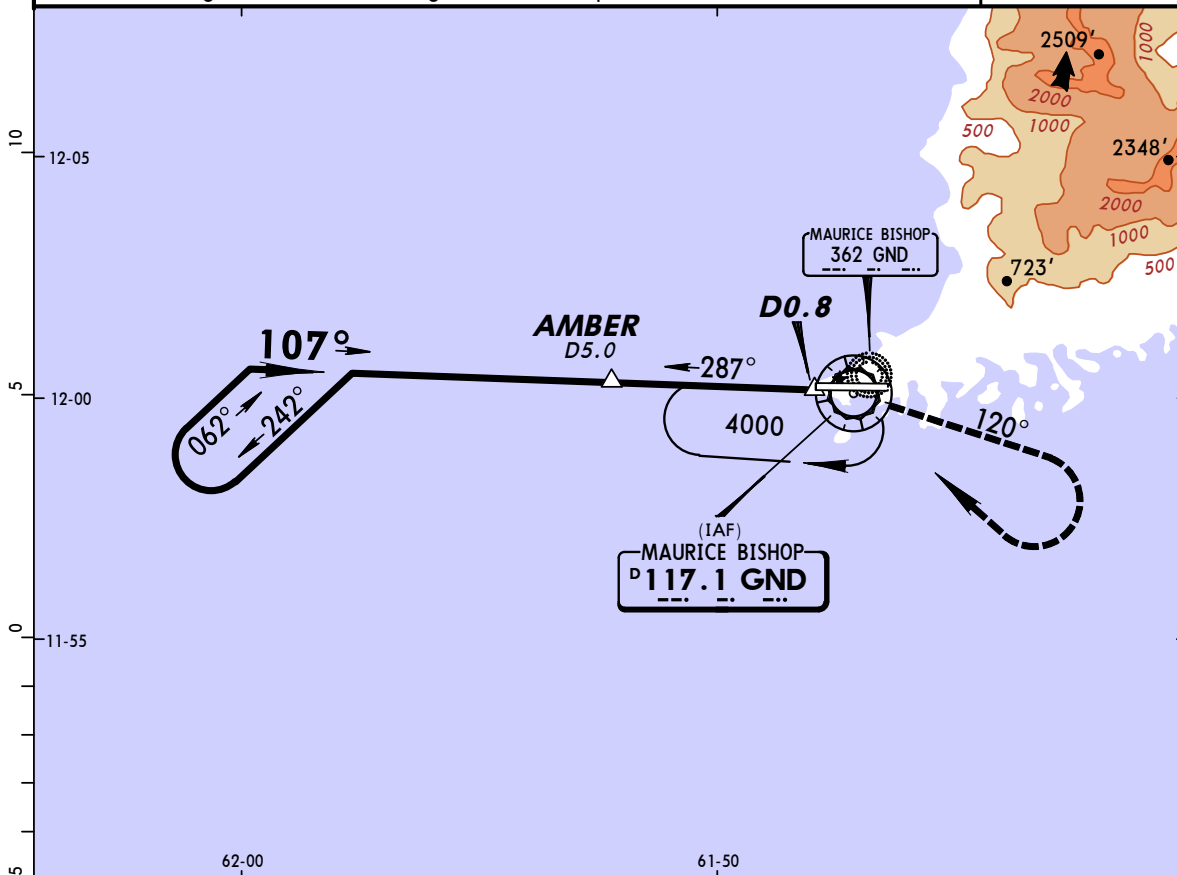


TGPY/GND
MAURICE BISHOP INTL

JEPPESSEN
13 NOV 09 **(13-1)**

ST GEORGES, GRENADA
VOR DME Rwy 10

*MAURICE BISHOP Approach 119.4		*MAURICE BISHOP Tower 118.9		*Ground 121.9	
VOR GND 117.1	Final Apch Crs 107°	Minimum Alt AMBER 1000' (979')	MDA(H) 400' (379')	Apt Elev 45' Rwy 10 21'	
MISSED APCH: Climbing RIGHT turn outbound on GND VOR R-120 to 2000', then climbing RIGHT turn to return to GND VOR at 4000' or as directed by ATC.					 <p>4000'</p> <p>MSA GND VOR</p>
Alt Set: hPa (IN on req) Rwy Elev: 1 hPa Trans level: By ATC Trans alt: 4000' 1. CAUTION: High terrain north through east from airport.					



					ALS PAPI-L	2000' GND on 117.1 RT R-120
MAP at D0.8						

STRAIGHT-IN LANDING RWY 10			CIRCLE-TO-LAND		
MDA(H) 400' (379')			Not Authorized North of Extended Centerline Rwy 10 Only		
ALS out			MDA(H)		
A			Max Kts		
B			100	680' (635') - 2800m	
C	2800m		135		
D			180	680' (635') - 3200m	
			205		

PANS OPS