

TLPL/UVF



VIEUX FORT, ST LUCIA

HEWANORRA INTL

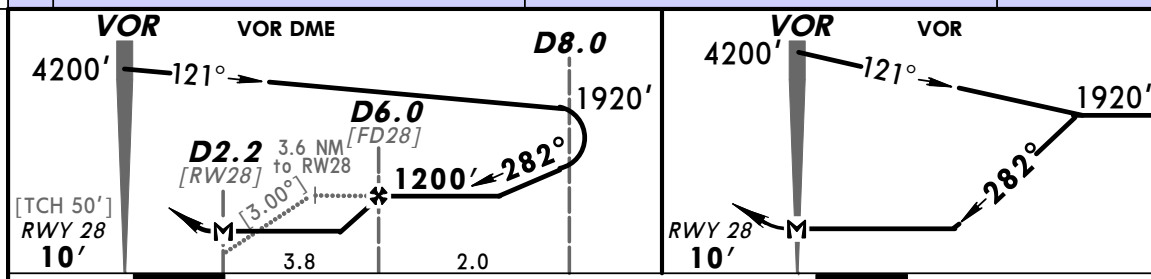
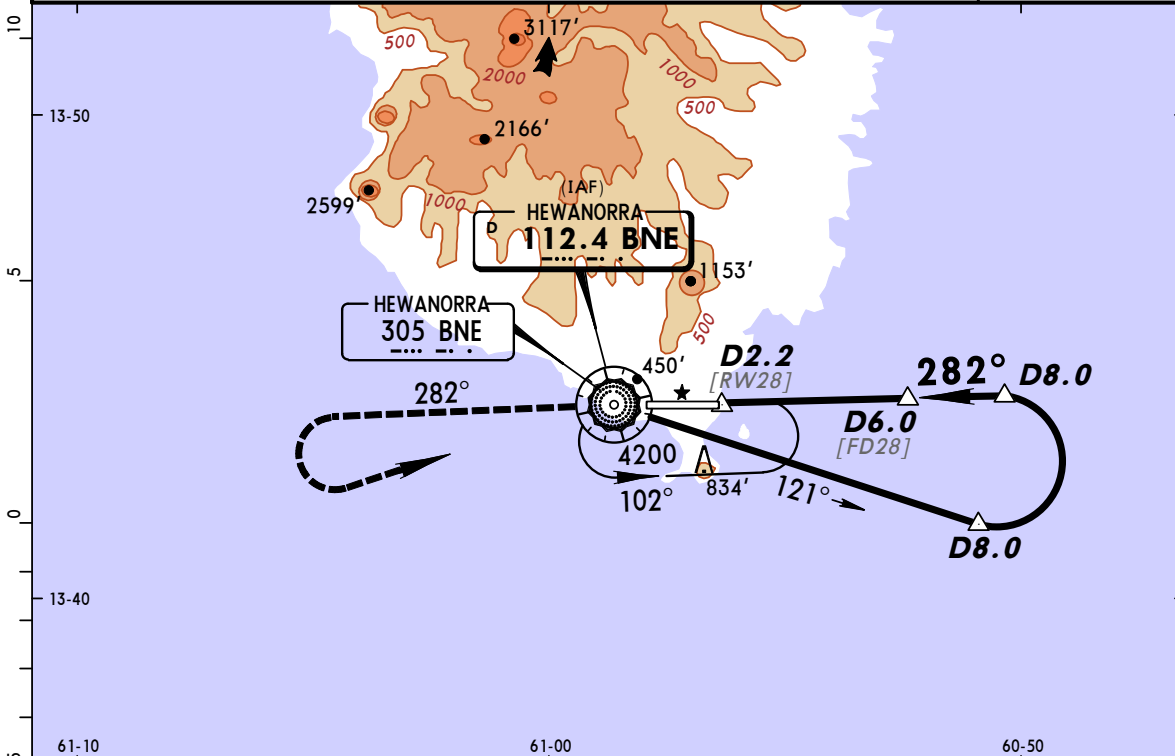
18 SEP 09

13-2

VOR DME Rwy 28

VOR Rwy 28

*ST LUCIA Approach <b>119.8</b>		*HEWANORRA Tower <b>118.3</b>		*Ground <b>121.6</b>	
BRIEFING STRIP™	VOR BNE <b>112.4</b>	Final Apch Crs <b>282°</b>	VOR DME Minimum Alt <b>D6.0</b> <b>1200'</b> (1190') VOR No FAF	MDA(H) <b>770'</b> (760')	Apt Elev 14' RWY 28 <b>10'</b>
	<p><b>MISSED APCH:</b> Climb outbound on BNE VOR R-282 to 4200', LEFT turn to BNE VOR and hold, or as directed by ATC .</p> <p>Alt Set: hPa (IN on req) Rwy Elev: 0 hPa Trans level: By ATC Trans alt: 9000'</p> <p>1. CAUTION: Aircraft not to descend below 5200' when approaching from southwest until within 15 NM from BNE VOR. 2. CAUTION: High terrain north and south of airport. 3. Windshear and turbulence on final approach Rwy 10 when wind from northeast is 15 kts or greater.</p>				
					<p>MSA BNE NDB</p>



Gnd Speed-Kts	70	90	100	120	140	160	PAPI-L	4200'	BNE	← LT	BNE	
Descent angle [3.00°]	372	478	531	637	743	849		↑	on 112.4		R-282	112.4
VOR DME: MAP at D2.2												
VOR: MAP at VOR												

STRAIGHT-IN LANDING RWY28				CIRCLE-TO-LAND			
MDA(H) <b>770'</b> (760')				Not Authorized North of Rwy 10/28			
	VOR DME		VOR	Max Kts	MDA(H)		
A	1600m		1600m	100	1130' (1116') -2000m		
B	2000m		1600m	135	1130' (1116') -2400m		
C	3600m		2000m	180			
D	4000m		4000m	205	1230' (1216') -4800m		

PANS OPS 4