

TFFR/PTP

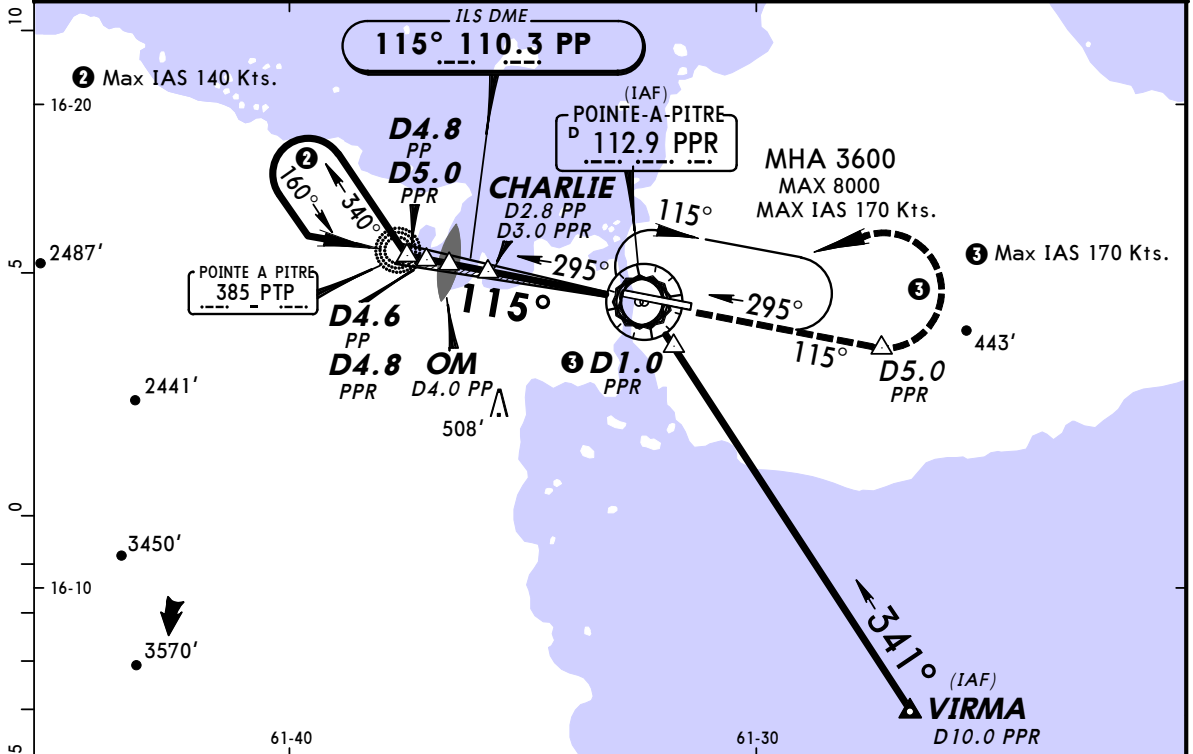
JEPPESSEN POINTE-A-PITRE, GUADELOUPE

LE RAIZET

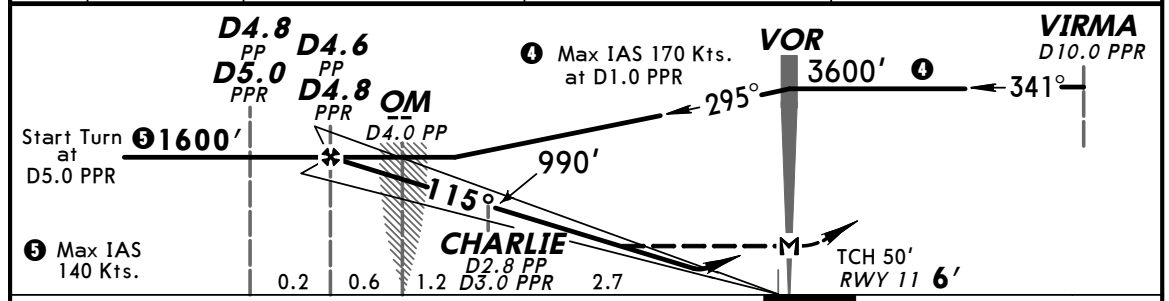
18 MAY 07 (11-2) CAT A & B

VOR DME ILS DME Rwy 11
VIRMA ILS DME Rwy 11

ATIS 127.6		RAIZET Approach (R) 121.3 119.05		RAIZET Tower 118.4	Ground 121.85
LOC PP 110.3	Final Apch Crs 115°	Minimum Alt D4.6 PP D4.8 PPR 1600' (1594')	ILS DA(H) 206' (200')	Apt Elev 35' Rwy 11 6'	
Alt Set: hPa Rwy Elev: 0 hPa Trans level: By ATC Trans alt: 9000' 1. ILS Rwy 11 glide path cover limited to 4 degrees right of runway axis.					



LOC (GS out)	PP/PPR DME	4.0	3.0	2.0
	ALTITUDE	1370'/1330'	1030'/990'	690'/650'



Gnd speed-Kts	70	90	100	120	140	160	PAPI-L	↑	D5.0 PPR	3600'	PPR 112.9
ILS GS 3.2° or LOC Descent Gradient 5.6%	402	517	574	689	804	919					
MAP at VOR or FAF to MAP	4.8	4:07	3:12	2:53	2:24	2:03					

JAR-OPS		STRAIGHT-IN LANDING RWY 11		CIRCLE-TO-LAND	
ILS DA(H) 206' (200')		LOC (GS out) MDA(H) 420' (414')		Max Kts. MDA(H)	
A	RVR 1000m	RVR 1500m		110	600' (565') - V1500m
B				135	600' (565') - V1600m
C	NOT APPLICABLE	NOT APPLICABLE		C	NOT APPLICABLE
D				D	NOT APPLICABLE

PANS OPS