

TFFR/PTP

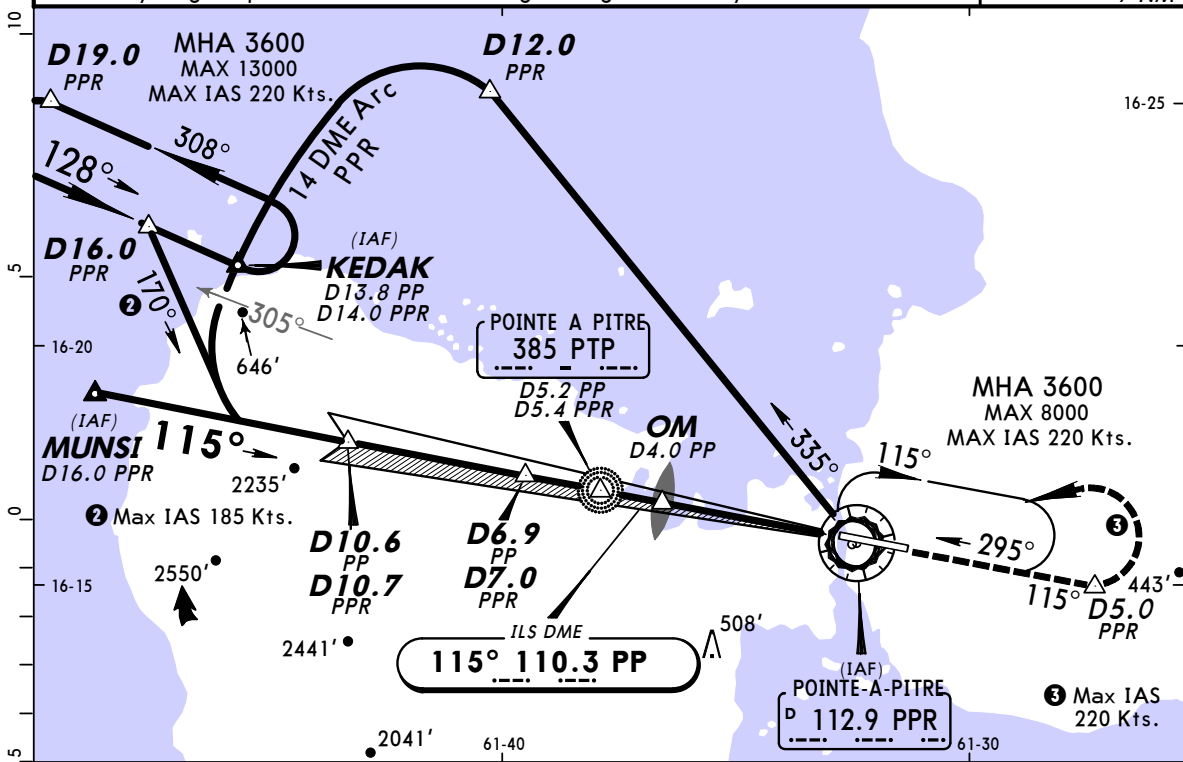
JEPPESEN POINTE-A-PITRE, GUADELOUPE

LE RAIZET

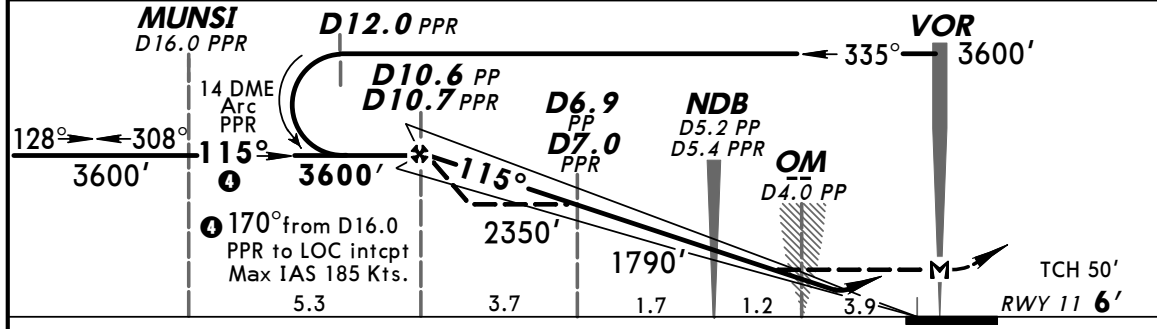
18 MAY 07 (11-1)

VOR DME ILS DME Rwy 11
KEDAK-MUNSI ILS DME Rwy 11

ATIS 127.6	RAIZET Approach (R) 121.3 119.05		RAIZET Tower 118.4	Ground 121.85
LOC PP 110.3	Final Apc Crs 115°	Minimum Alt D10.6 PP D10.7 PPR 3600' (3594')	ILS DA(H) 206' (200')	Apt Elev 35' Rwy 11 6'
<p>MISSED APCH: Climb STRAIGHT AHEAD, at D5.0 PPR turn LEFT to PPR VOR climbing to 3600'. Climb to 1200' prior to level acceleration or in accordance with instructions from CONTROL. Max IAS in missed approach turn 220 Kts.</p>				
<p>Alt Set: hPa Rwy Elev: 0 hPa Trans level: By ATC Trans alt: 9000'</p>				MSA 2000' within 7 NM
<p>1. ILS Rwy 11 glide path cover limited to 4 degrees right of runway axis.</p>				



LOC (GS out)	PP/PPR DME	7.0	6.0	5.0	4.0	3.0	2.0
	ALTITUDE	2390'/2350'	2050'/2010'	1710'/1670'	1370'/1330'	1030'/990'	690'/650'



Gnd speed-Kts	70	90	100	120	140	160	PAPI-L ↑	D5.0 PPR	3600'	PPR 112.9
ILS GS 3.2° or	402	517	574	689	804	919				
LOC Descent Gradient 5.6%										
MAP at VOR or FAF to MAP	10.7	9:10	7:08	6:25	5:21	4:35				

JAR-OPS		STRAIGHT-IN LANDING RWY 11		CIRCLE-TO-LAND	
ILS DA(H) 206' (200')		LOC (GS out) MDA(H) 420' (414')		Max Kts. MDA(H)	
A	RVR 1000m	RVR 1500m		110	600' (565') - V1500m
B				135	600' (565') - V1600m
C				180	910' (875') - V2400m
D				205	910' (875') - V3600m

PANS OPS