

TLPL/UVF



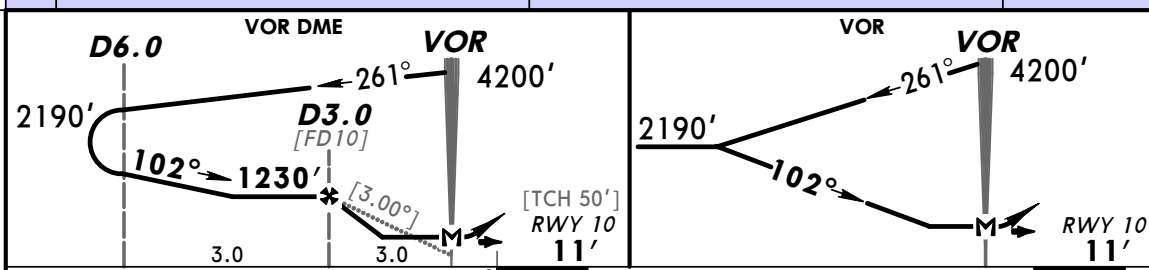
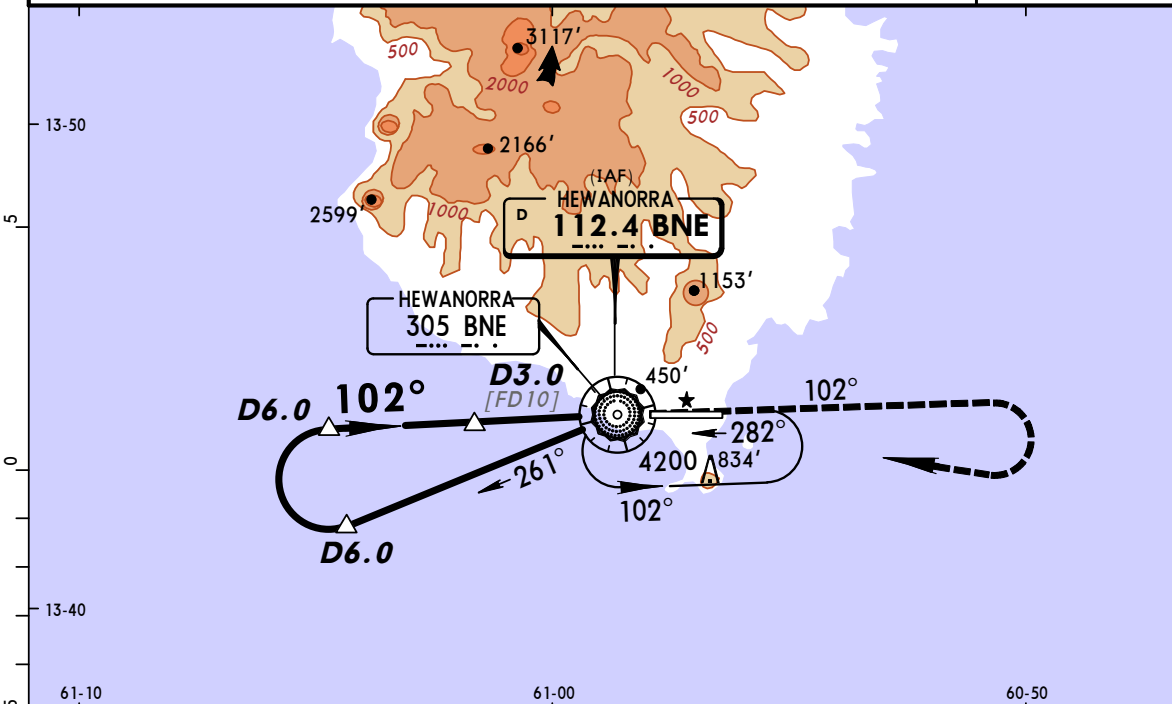
VIEUX FORT, ST LUCIA

HEWANORRA INTL

18 SEP 09 (13-1)

VOR DME Rwy 10
VOR Rwy 10

*ST LUCIA Approach 119.8		*HEWANORRA Tower 118.3		*Ground 121.6	
VOR BNE 112.4	Final Apch Crs 102°	VOR DME Minimum Alt D3.0 1230' (1219')	VOR DME MDA(H) 730' (719')	Apt Elev 14'	
		VOR No FAF	VOR MDA(H) 790' (779')	RWY 10 11'	
MISSED APCH: Climb outbound on BNE VOR R-102 to 4200', RIGHT turn to BNE VOR and hold, or as directed by ATC .					<p>MSA BNE NDB</p>
Alt Set: hPa (IN on req) Rwy Elev: 0 hPa Trans level: By ATC Trans alt: 9000' 1. CAUTION: Aircraft not to descend below 5200' when approaching from southwest until within 15 NM from BNE VOR. 2. CAUTION: High terrain north and south of airport. 3. Windshear and turbulence on final approach Rwy 10 when wind from northeast is 15 kts or greater.					



Gnd Speed-Kts	70	90	100	120	140	160	ALS PAPI	4200'	BNE on 112.4 R-102	RT	BNE 112.4
Descent angle [3.00°]	372	478	531	637	743	849					
MAP at VOR											

STRAIGHT-IN LANDING RWY10						CIRCLE-TO-LAND					
VOR DME MDA(H) 730' (719')			VOR MDA(H) 790' (779')			Not Authorized North of Rwy 10/28					
ALS out			ALS out			Max Kts					
A	1200m	1600m	1200m	1600m	100	1130' (1116')-2000m					
B	2000m		2000m		135	1130' (1116')-2400m					
C	3600m		3600m		180	1230' (1216')-4800m					
D	4000m		4000m		205						

PANS OPS 4