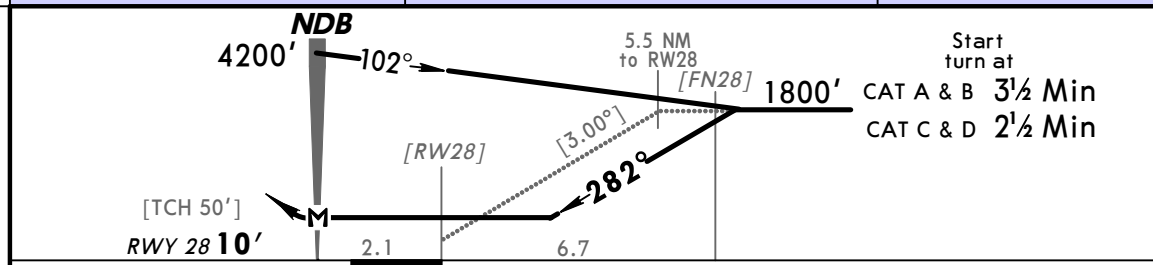
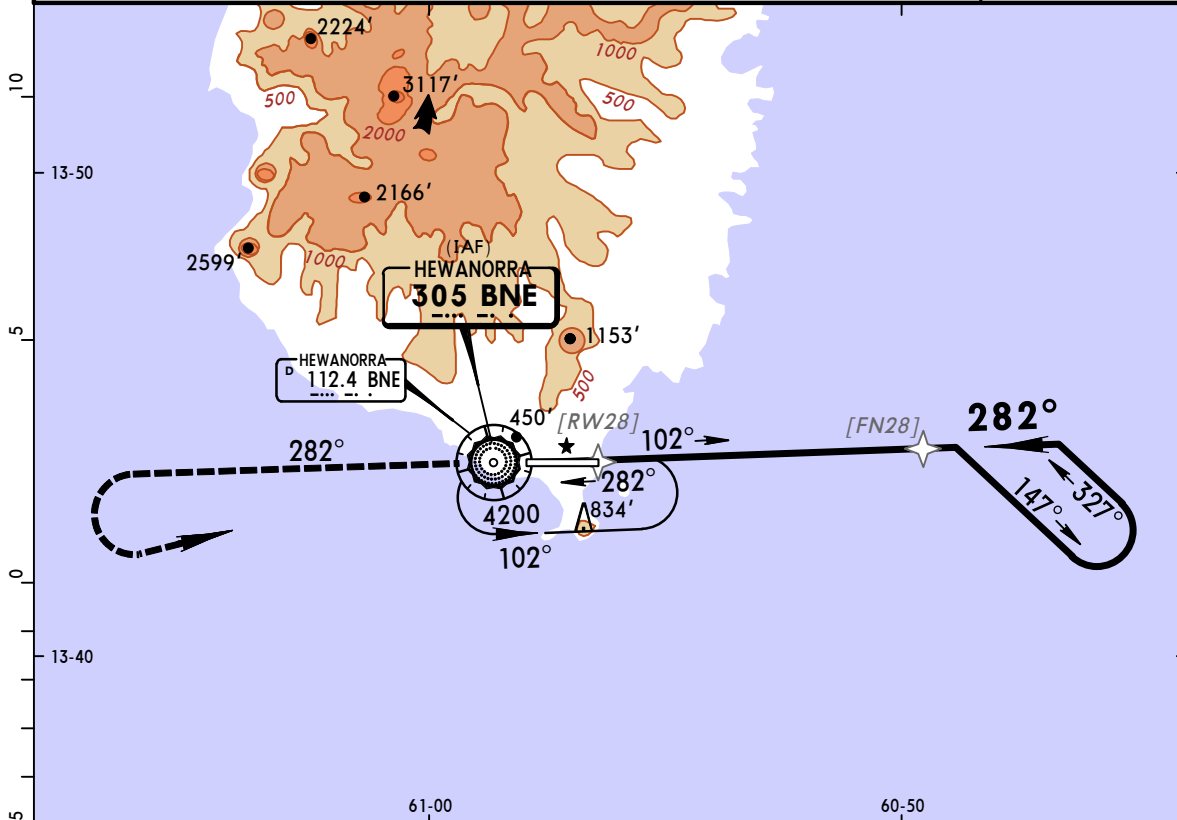
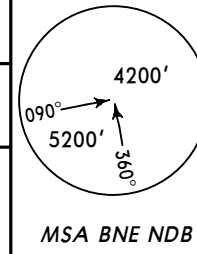


TLPL/UVF
HEWANORRA INTL

JEPPESEN
18 SEP 09 **(16-2)**

VIEUX FORT, ST LUCIA
NDB Rwy 28

BRIEFING STRIP™	*ST LUCIA Approach 119.8		*HEWANORRA Tower 118.3		*Ground 121.6
	NDB BNE 305	Final Apch Crs 282°	No FAF	MDA(H) 890' (880')	Apt Elev 14' RWY 28 10'
	MISSED APCH: Climb on bearing 282° from BNE NDB to 4200', then LEFT turn, return to BNE NDB and hold, or as directed by ATC.				
Alt Set: hPa (IN on req) Rwy Elev: 0 hPa Trans level: By ATC Trans alt: 9000' 1. CAUTION: Aircraft not to descend below 5200' when approaching from southwest until within 15 NM from BNE VOR. 2. CAUTION: High terrain north and south of airport. 3. Windshear and turbulence on final approach Rwy 10 when wind from northeast is 15 kts or greater.					



Gnd speed-Kts	70	90	100	120	140	160	PAPI-L	4200'	on	BNE	LT	BNE
Descent angle [3.00°]	372	478	531	637	743	849		↑	305	282°		305
MAP at NDB												

STRAIGHT-IN LANDING RWY28		CIRCLE-TO-LAND	
MDA(H) 890' (880')		Not Authorized North of Rwy 10/28.	
		Max Kts	MDA(H)
A	2000m	100	1130' (1116')-2000m
B		135	1130' (1116')-2400m
C	4400m	180	1230' (1216')-4800m
D	4800m	205	

PANS OPS 4