

**TLPL/UVF**  
**HEWANORRA INTL**

**JEPPESEN**  
18 SEP 09 **(16-1)**

**VIEUX FORT, ST LUCIA**  
**NDB Rwy 10**

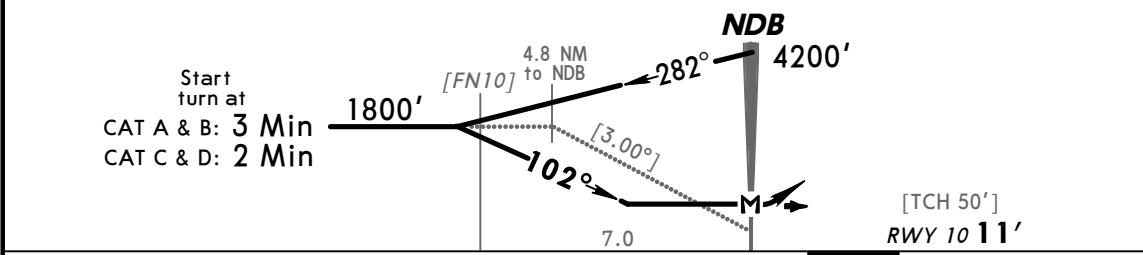
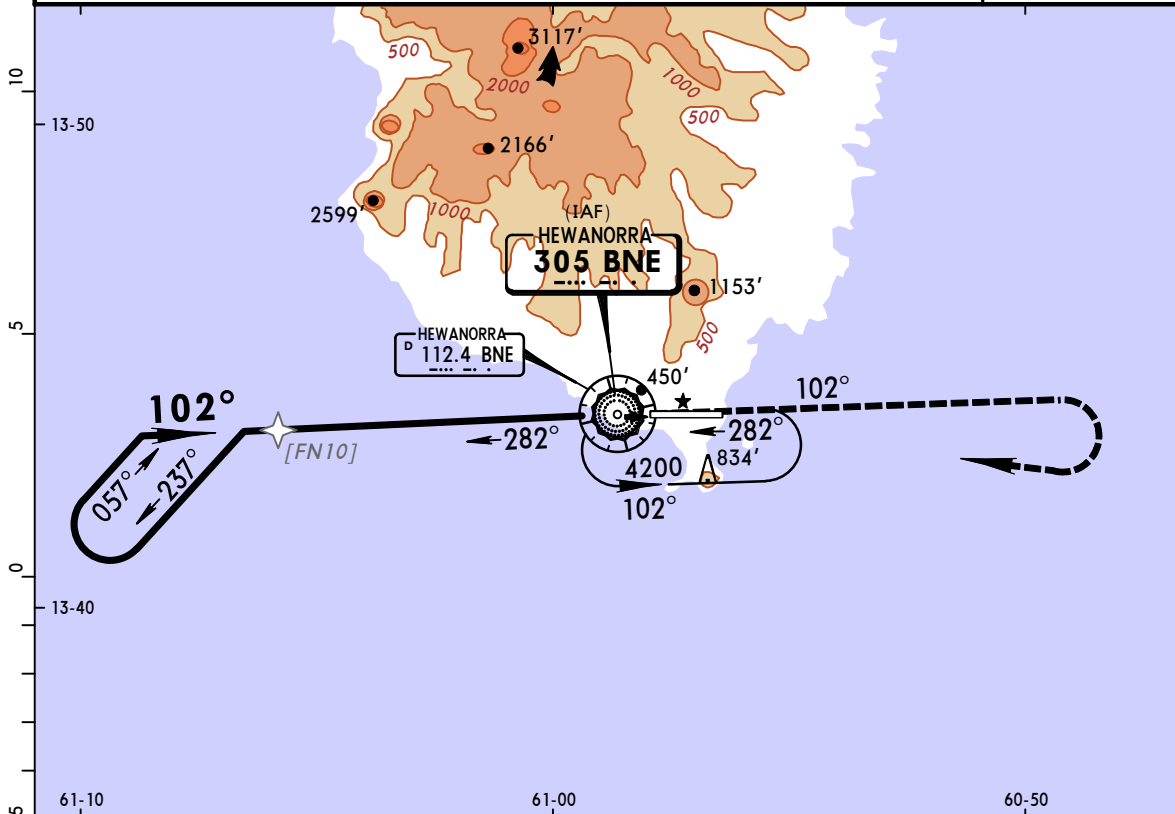
*ST LUCIA Approach <b>119.8</b>		*HEWANORRA Tower <b>118.3</b>		*Ground <b>121.6</b>	
<b>NDB</b> <b>BNE</b> <b>305</b>	<i>Final</i> <i>Apch Crs</i> <b>102°</b>	No FAF	<i>MDA(H)</i> <b>790' (779')</b>	<i>Apt Elev</i> <b>14'</b>	<i>RWY</i> <b>10 11'</b>

**MISSED APCH:** Climb on bearing 102° from BNE NDB to 4200',  
**RIGHT** turn, return to BNE NDB and hold, or as directed by ATC.

Alt Set: hPa (IN on req) Rwy Elev: 0 hPa Trans level: By ATC Trans alt: 9000'

1. CAUTION: Aircraft not to descend below 5200' when approaching from southwest until within 15 NM from BNE VOR. 2. CAUTION: High terrain north and south of airport. 3. Windshear and turbulence on final approach Rwy 10 when wind from northeast is 15 kts or greater.

**MSA BNE NDB**



<i>Gnd Speed-Kts</i>	70	90	100	120	140	160	ALS 4200'	BNE 305	RT	BNE 305
<i>Descent angle [3.00°]</i>	372	478	531	637	743	849				
<i>MAP at NDB</i>							PAPI			

<b>STRAIGHT-IN LANDING RWY10</b>			<b>CIRCLE-TO-LAND</b>		
<i>MDA(H)</i> <b>790' (779')</b>			Not Authorized North of Rwy 10/28		
		ALS out		Max Kts	<i>MDA(H)</i>
A	1200m	1600m	100	1130' (1116') -2000m	
B	2000m		135	1130' (1116') -2400m	
C	3600m		180	1230' (1216') -4800m	
D	4000m		205		

**PANS OPS 4**