

TLPL/UVF

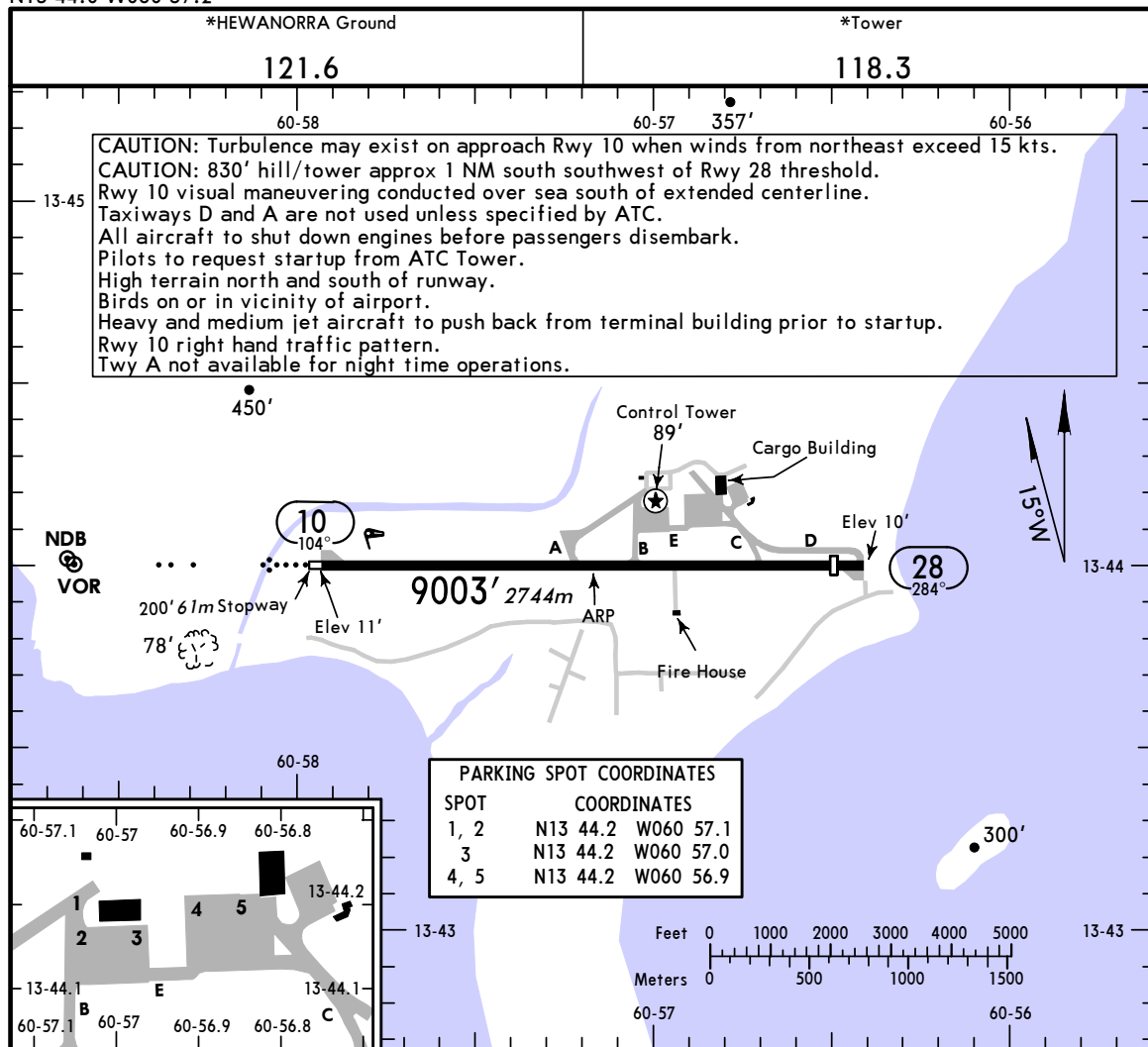
Apt Elev 14'
N13 44.0 W060 57.2



18 SEP 09 (13-1)

VIEUX FORT, ST LUCIA

HEWANORRA INTL



ADDITIONAL RUNWAY INFORMATION

RWY	HIRL	ALS	PAPI-L (3.00°)	USABLE LENGTHS		WIDTH
				Threshold	Glide Slope	
10				① 8888' 2709m		151'
28				8511' 2594m		46m

① Last 113' (34m) of Rwy 10 not available for landing or takeoff.

TAKE-OFF & DEPARTURE PROCEDURE

	AIR CARRIERS		AIR CARRIER (FAR 121) All Rwys Adequate Vis Ref
	LVP must be in force All Rwys RCLM (Day only) or RL	All Rwys RCLM (Day only) or RL	
A	250m	400m	2 Eng
B			400m
C			
D			

DEPARTURE PROCEDURE: For aircraft making a left turn after take-off Rwy 10: Climb on rwy heading until reaching 4200' then left turn; or, for aircraft making a right turn after take-off Rwy 10: climb on rwy heading until reaching 2000' then right turn.