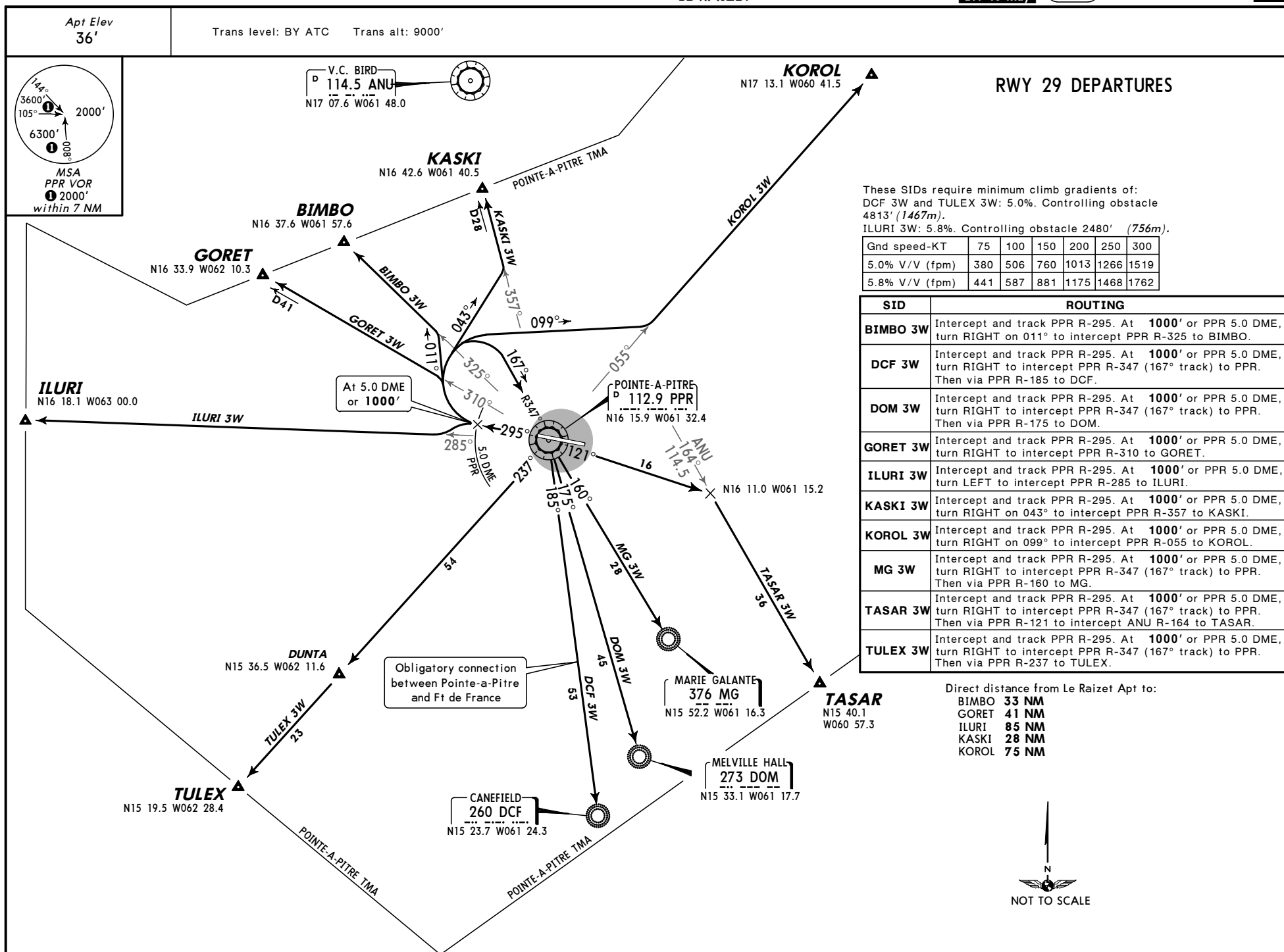


TFFR/PTP
LE RAIZET

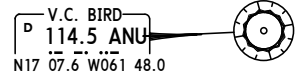
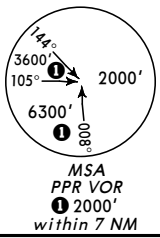
7 MAY 04
Eff 13 May 10-3A

POINTE-A-PITRE,
GUADELOUPE
SID



Apt Elev
36'

Trans level: BY ATC Trans alt: 9000'



These SIDs require minimum climb gradients of:
DCF 3W and TULEX 3W: 5.0%. Controlling obstacle 4813' (1467m).
ILURI 3W: 5.8%. Controlling obstacle 2480' (756m).

Gnd speed-KT	75	100	150	200	250	300
5.0% V/V (fpm)	380	506	760	1013	1266	1519
5.8% V/V (fpm)	441	587	881	1175	1468	1762

SID	ROUTING
BIMBO 3W	Intercept and track PPR R-295. At 1000' or PPR 5.0 DME, turn RIGHT on 011° to intercept PPR R-325 to BIMBO.
DCF 3W	Intercept and track PPR R-295. At 1000' or PPR 5.0 DME, turn RIGHT to intercept PPR R-347 (167° track) to PPR. Then via PPR R-185 to DCF.
DOM 3W	Intercept and track PPR R-295. At 1000' or PPR 5.0 DME, turn RIGHT to intercept PPR R-347 (167° track) to PPR. Then via PPR R-175 to DOM.
GORET 3W	Intercept and track PPR R-295. At 1000' or PPR 5.0 DME, turn RIGHT to intercept PPR R-310 to GORET.
ILURI 3W	Intercept and track PPR R-295. At 1000' or PPR 5.0 DME, turn LEFT to intercept PPR R-285 to ILURI.
KASKI 3W	Intercept and track PPR R-295. At 1000' or PPR 5.0 DME, turn RIGHT on 043° to intercept PPR R-357 to KASKI.
KOROL 3W	Intercept and track PPR R-295. At 1000' or PPR 5.0 DME, turn RIGHT on 099° to intercept PPR R-055 to KOROL.
MG 3W	Intercept and track PPR R-295. At 1000' or PPR 5.0 DME, turn RIGHT to intercept PPR R-347 (167° track) to PPR. Then via PPR R-160 to MG.
TASAR 3W	Intercept and track PPR R-295. At 1000' or PPR 5.0 DME, turn RIGHT to intercept PPR R-347 (167° track) to PPR. Then via PPR R-121 to intercept ANU R-164 to TASAR.
TULEX 3W	Intercept and track PPR R-295. At 1000' or PPR 5.0 DME, turn RIGHT to intercept PPR R-347 (167° track) to PPR. Then via PPR R-237 to TULEX.

Direct distance from Le Raizet Apt to:

- BIMBO **33 NM**
- GORET **41 NM**
- ILURI **85 NM**
- KASKI **28 NM**
- KOROL **75 NM**

