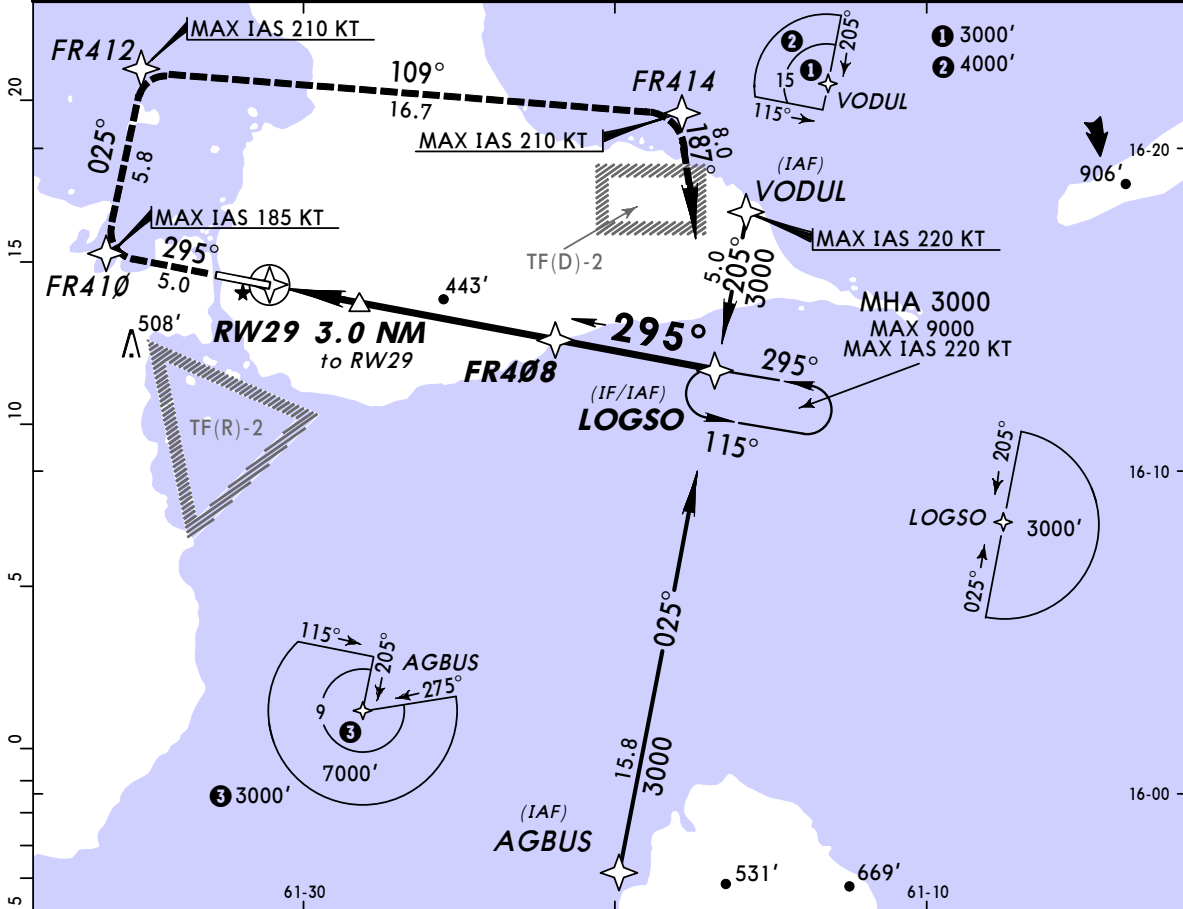


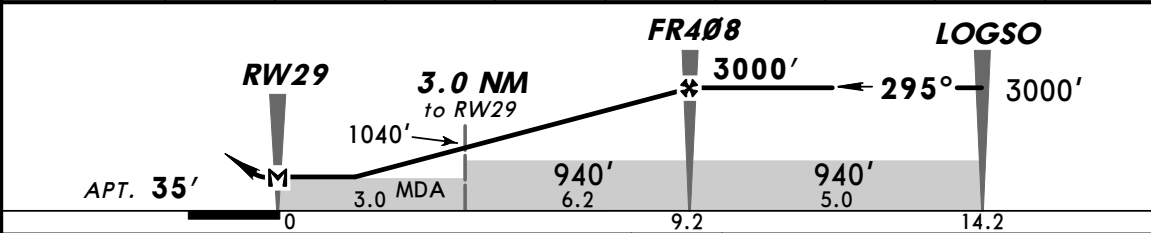
**TFFR/PTP**  
**LE RAIZET**

**JEPPESSEN** **POINTE-A-PITRE, GUADELOUPE**  
3 APR 09 **(12-1)** **Eff 9 Apr** **RNAV (GNSS) Rwy 29**

ATIS 127.6		RAIZET Approach (R) 121.3 119.05		RAIZET Tower 118.4	Ground 121.85
RNAV	Final Apch Crs <b>295°</b>	Minimum Alt <b>FR408</b> <b>3000' (2965')</b>	LNAV MDA(H) <b>680' (645')</b>	Apt Elev <b>35'</b> Rwy 29 <b>28'</b>	TAA 25 NM IAF
<b>MISSED APCH: Climb direct to FR410 (MAX IAS 185 KT), then turn RIGHT to FR412 (MAX IAS 210 KT) and then turn RIGHT to FR414 to enter holding LOGSO climbing up to 2100', or proceed according to ATIS. Climb up to 900' prior to level acceleration.</b>					
Alt Set: hPa    Apt Elev: 1 hPa    Trans level: By ATC    Trans alt: 9000' 1. In case of loss of required RNAV capability, the pilot must follow or join the appropriate existing conventional published procedure.					



DIST to RW29	1.0	2.0	3.0	4.0	5.0	6.0	7.0	8.0	9.0
ALTITUDE	680'	715'	1035'	1350'	1670'	1990'	2305'	2625'	2945'



Gnd speed-Kts	70	90	100	120	140	160	REIL PAPI-L	↑ D → <b>FR410</b>	
Descent Gradient	5.2%	369	474	527	632	737			843
MAP at RW29									
FAF to MAP	9.2	7:53	6:08	5:31	4:36	3:57	3:27		

<b>PANS OPS</b>	<b>JAR-OPS</b>			<b>STRAIGHT-IN LANDING RWY 29</b>			<b>CIRCLE-TO-LAND</b>			
	LNAV						Max Kts			
	MDA(H) <b>680' (645')</b>						MDA(H) — VIS —			
	A	RVR 1500m					110	600' (565') - 1500m		
	B	RVR 2000m					135	600' (565') - 1600m		
C						180	910' (875') - 2400m			
D						205	910' (875') - 3600m			