

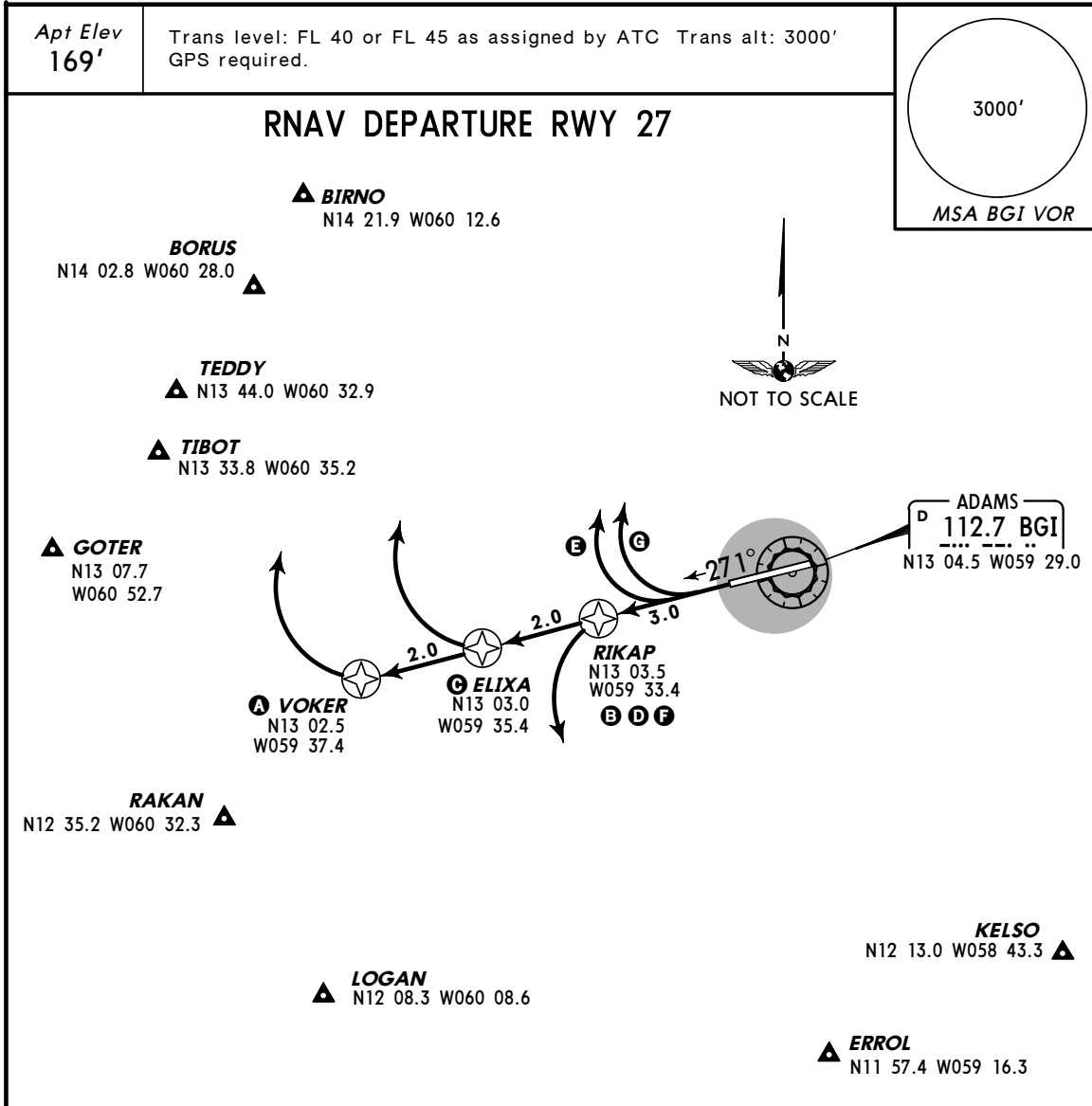
TBPB/BGI (BRIDGETOWN)  
GRANTLEY ADAMS INTL

JEPPESEN

1 MAY 09 **10-3A** Eff 7 May

BARBADOS

**SID**



**INITIAL CLIMB**

|  |   |
|--|---|
| <p><b>JET AIRCRAFT</b></p>   | <p><b>A</b> NORTHBOUND: Climb direct VOKER. Upon reaching VOKER or <b>2500'</b>, whichever comes first, turn RIGHT direct BIRNO, BORUS, GOTER, TEDDY, TIBOT or N18 00.0/W056 00.0 as assigned. Then as filed. <b>MAINTAIN</b> best possible rate of climb through <b>5000'</b>.</p> <p><b>B</b> SOUTHBOUND: Climb direct RIKAP. Upon reaching RIKAP or <b>2000'</b>, whichever comes first, turn LEFT direct ERROL, KELSO, LOGAN or RAKAN as assigned. Then as filed. A normal rate of climb may be used.</p> |
| <p><b>QUAD TURBOPROP AIRCRAFT</b></p>                                    | <p><b>C</b> NORTHBOUND: Climb direct ELIXA. Upon reaching ELIXA or <b>2000'</b>, whichever comes first, turn RIGHT direct BIRNO, BORUS, GOTER, TEDDY or TIBOT as assigned. Then as filed. <b>MAINTAIN</b> best possible rate of climb through <b>5000'</b>.</p> <p><b>D</b> SOUTHBOUND: Climb direct RIKAP. Upon reaching RIKAP or <b>1500'</b>, whichever comes first, turn LEFT direct ERROL, KELSO, LOGAN or RAKAN as assigned. Then as filed. A normal rate of climb may be used.</p>                     |
| <p><b>PROPELLER DRIVEN AIRCRAFT in EXCESS of 12500 lbs (5700 kg)</b></p> | <p><b>E</b> NORTHBOUND: Climb on runway heading 271° to <b>1500'</b>. Then turn RIGHT direct BIRNO, BORUS, GOTER, TEDDY or TIBOT as assigned. Then as filed. <b>MAINTAIN</b> best possible rate of climb through <b>5000'</b>.</p> <p><b>F</b> SOUTHBOUND: Climb direct RIKAP. Upon reaching RIKAP or <b>1000'</b>, whichever comes first, turn LEFT direct ERROL, KELSO, LOGAN or RAKAN as assigned. Then as filed. A normal rate of climb may be used.</p>  |
| <p><b>ALL OTHER PROPELLER DRIVEN AIRCRAFT</b></p>                        | <p><b>G</b> NORTHBOUND: Climb on runway heading 271° to <b>1000'</b>. Then turn RIGHT direct BIRNO, BORUS, GOTER, TEDDY or TIBOT as assigned. Then as filed. A normal rate of climb may be used.</p> <p><b>F</b> SOUTHBOUND: Climb direct RIKAP. Upon reaching RIKAP or <b>1000'</b>, whichever comes first, turn LEFT direct ERROL, KELSO, LOGAN or RAKAN as assigned. Then as filed. A normal rate of climb may be used.</p>  |