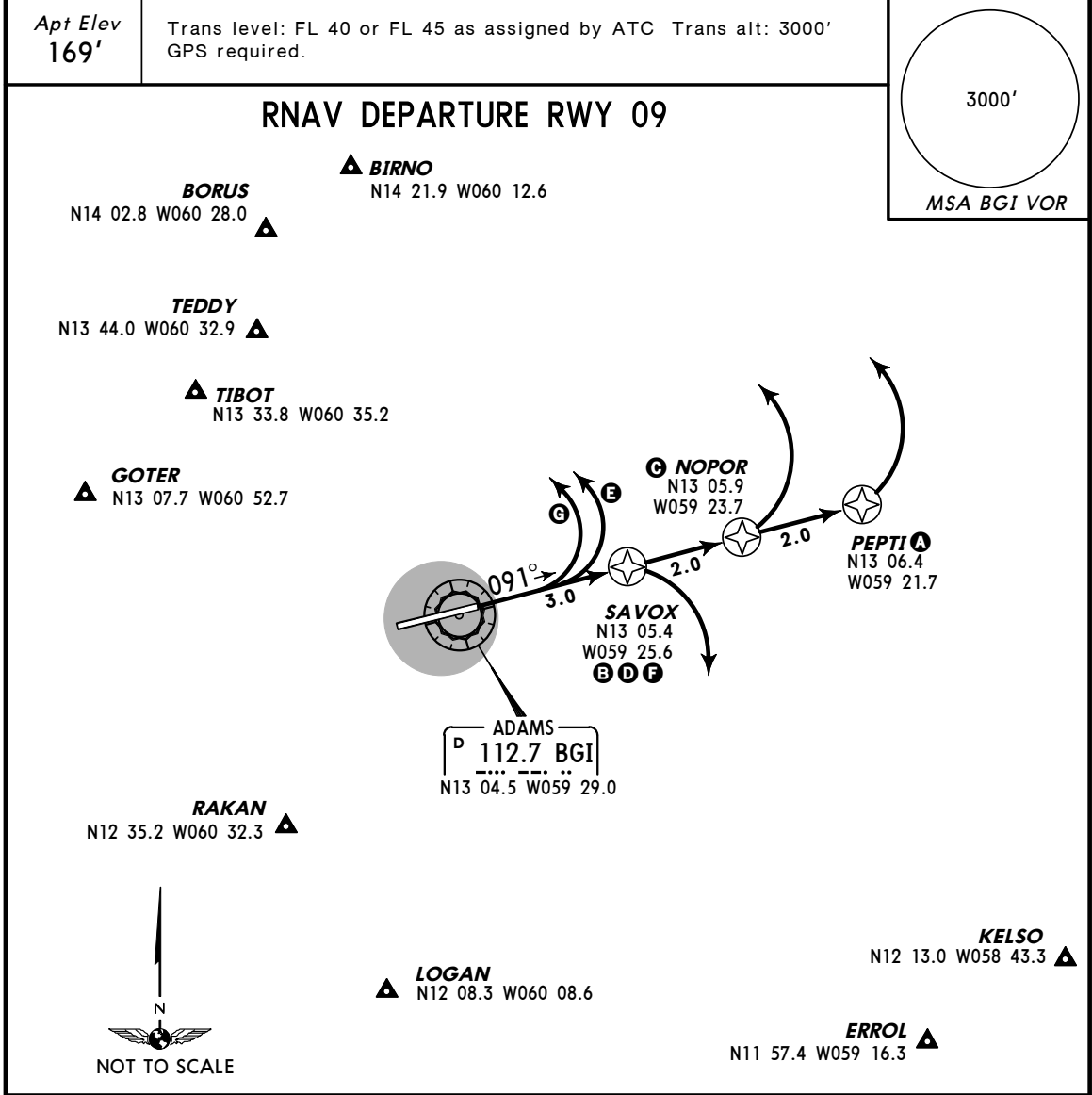


TBPB/BGI (BRIDGETOWN) **JEPPESEN** **BARBADOS**
GRANTLEY ADAMS INTL 1 MAY 09 **10-3** **Eff 7 May** **SID**



INITIAL CLIMB	
JET AIRCRAFT	<p>A NORTHBOUND: Climb direct PEPTI. Upon reaching PEPTI or 2500', whichever comes first, turn LEFT direct BIRNO, BORUS, GOTER, TEDDY, TIBOT or N18 00.0/W056 00.0 as assigned. Then as filed. MAINTAIN best possible rate of climb through 5000'.</p> <p>B SOUTHBOUND: Climb direct SAVOX. Upon reaching SAVOX or 2000', whichever comes first, turn RIGHT direct ERROL, KELSO, LOGAN or RAKAN as assigned. Then as filed. A normal rate of climb may be used.</p>
QUAD TURBOPROP AIRCRAFT	<p>C NORTHBOUND: Climb direct NOPOR. Upon reaching NOPOR or 2000', whichever comes first, turn LEFT direct BIRNO, BORUS, GOTER, TEDDY, or TIBOT as assigned. Then as filed. MAINTAIN best possible rate of climb through 5000'.</p> <p>D SOUTHBOUND: Climb direct SAVOX. Upon reaching SAVOX or 1500', whichever comes first, turn RIGHT direct ERROL, KELSO, LOGAN or RAKAN as assigned. Then as filed. A normal rate of climb may be used.</p>
PROPELLER DRIVEN AIRCRAFT in EXCESS of 12500 lbs (5700 kg)	<p>E NORTHBOUND: Climb on runway heading 091° to 1500'. Then turn LEFT direct BIRNO, BORUS, GOTER, TEDDY or TIBOT as assigned. Then as filed. MAINTAIN best possible rate of climb through 5000'.</p> <p>F SOUTHBOUND: Climb direct SAVOX. Upon reaching SAVOX or 1000', whichever comes first, turn RIGHT direct ERROL, KELSO, LOGAN or RAKAN as assigned. Then as filed. A normal rate of climb may be used.</p>
ALL OTHER PROPELLER DRIVEN AIRCRAFT	<p>G NORTHBOUND: Climb on runway heading 091° to 1000'. Then turn LEFT direct BIRNO, BORUS, GOTER, TEDDY or TIBOT as assigned. Then as filed. A normal rate of climb may be used.</p> <p>H SOUTHBOUND: Climb direct SAVOX. Upon reaching SAVOX or 1000', whichever comes first, turn RIGHT direct ERROL, KELSO, LOGAN or RAKAN as assigned. Then as filed. A normal rate of climb may be used.</p>