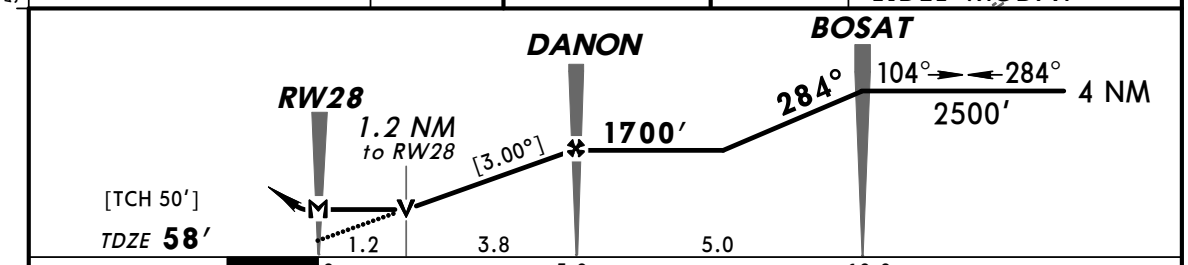
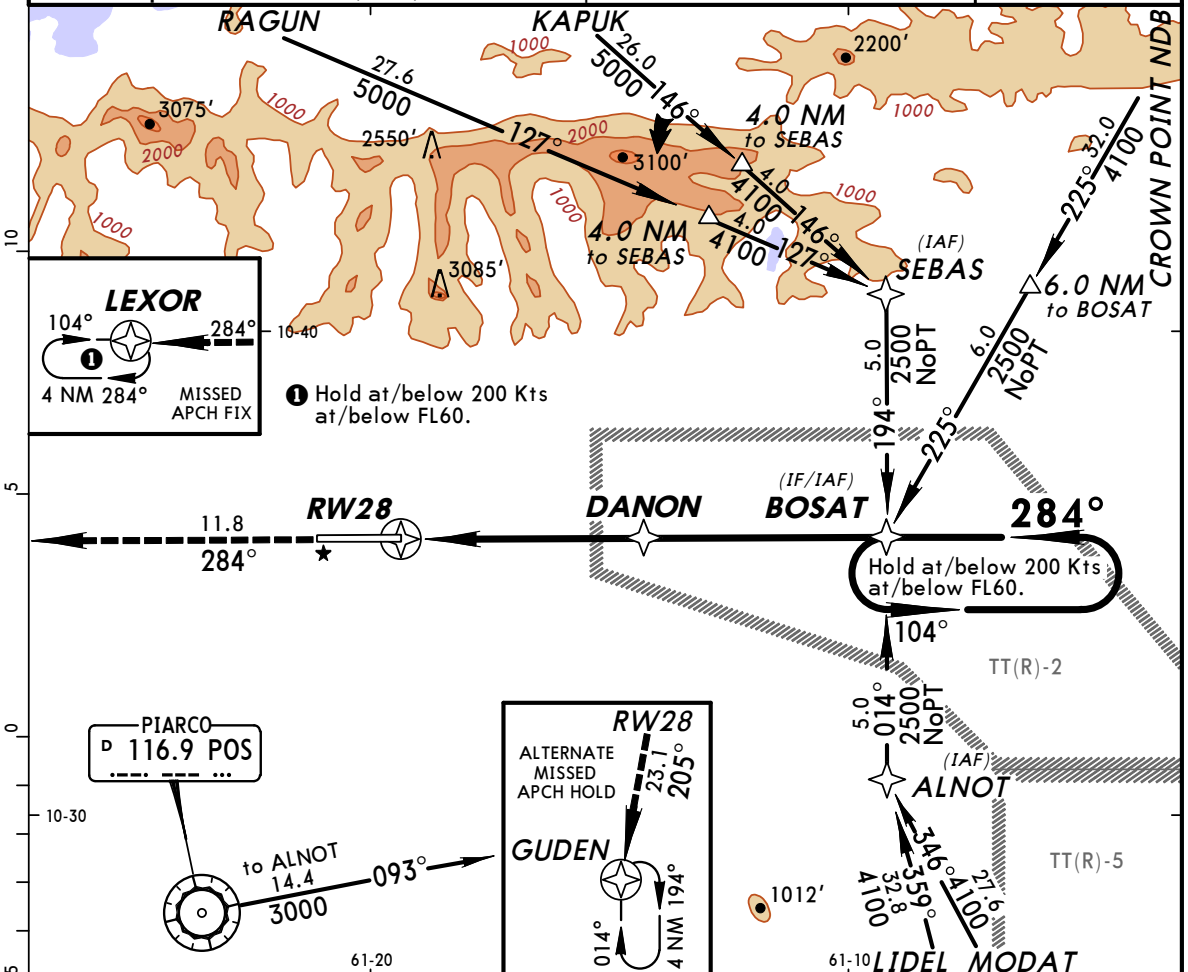


TTPP/POS
PIARCO INTL

JEPPESEN PORT OF SPAIN, TRINIDAD
RNAV (GPS) Rwy 28

21 AUG 09 (12-2)

ATIS 126.7		PIARCO Approach 119.0		PIARCO Tower 118.1		Ground 121.9	
RNAV	Final Apch Crs 284°	Minimum Alt DANON 1700' (1642')	LNAV MDA(H) 480' (422')	Apt Elev 58'	TDZE 58'		
MISSED APCH: Climb to 2500' direct LEXOR and hold, or as directed by ATC.							4100' MSA RW28
Alt Set: hPa TDZ Elev: 2 hPa Trans level: FL 55 Trans alt: 4100'							



Gnd speed-Kts	70	90	100	120	140	160	2500'	D → LEXOR
Descent angle [3.00°]	372	478	531	637	743	849		
MAP at RW28								

STRAIGHT-IN LANDING RWY 28						CIRCLE-TO-LAND	
LNAV							
MDA(H) 480' (422')							

A							
B			1600m				NA
C							
D			2000m				