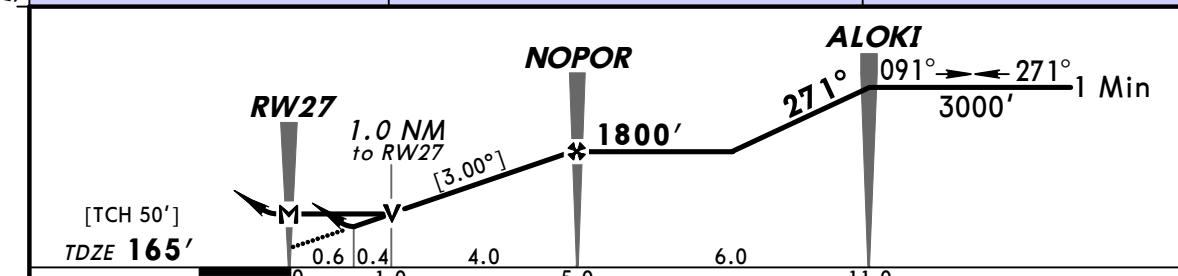
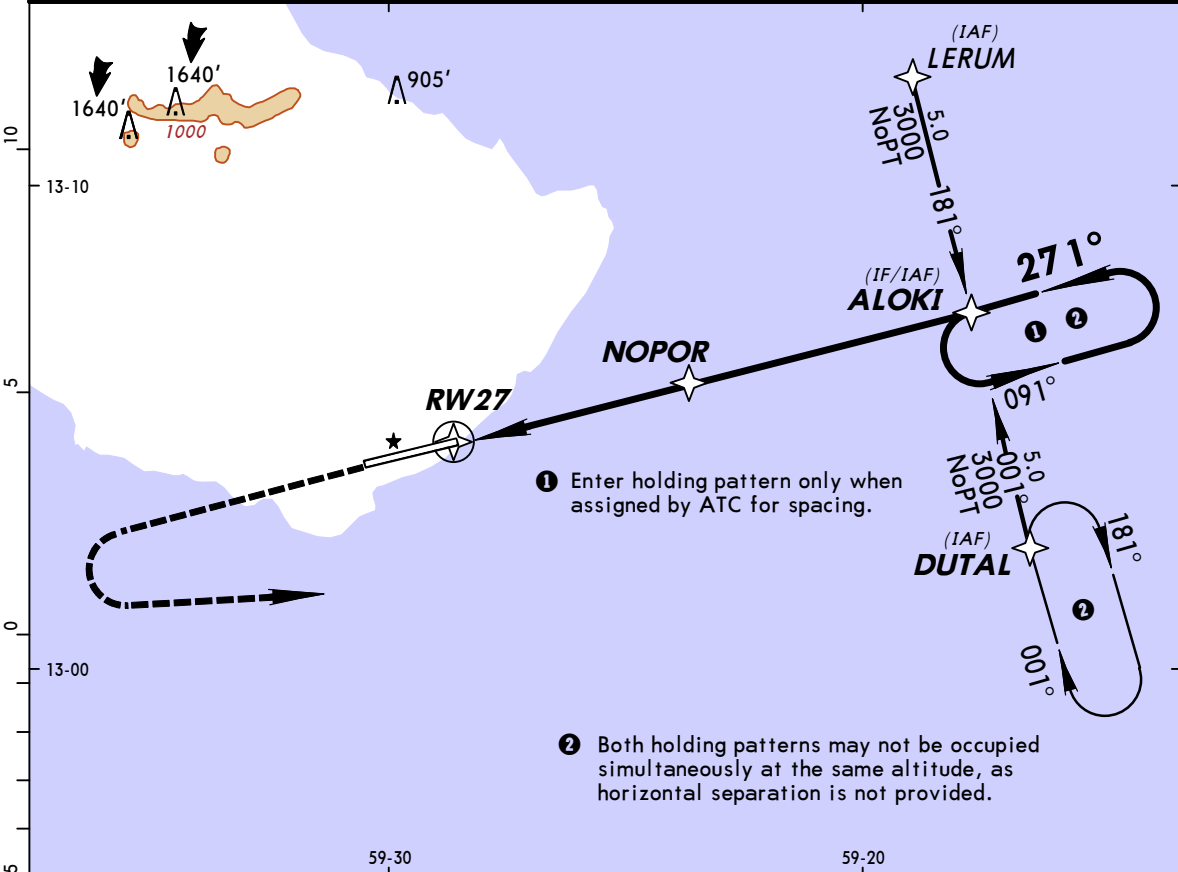


TBPB/BGI (BRIDGETOWN) **JEPPESEN** **BARBADOS**
GRANTLEY ADAMS INTL 1 MAY 09 **(12-2)** **Eff 7 May** **RNAV (GPS) Rwy 27**

| | | | | | | | |
|---|--------|----------------------------------|---|--|--|-------------|--------|
| BRIEFING STRIP™ | ATIS | Radar vectoring thru ADAMS Radar | | | ADAMS Approach (R) | ADAMS Tower | Ground |
| | 132.72 | 120.7 | 121.2 | 128.85 | 129.35 | 118.7 | 121.9 |
| | RNAV | Final Apch Crs 271° | Minimum Alt NOPOR 1800' (1635') | LNAV/VNAV DA(H) 420' (255') | Apt Elev 169' TDZE 165' | 3000' | |
| MISSED APCH: Climb to 2000, then climbing LEFT turn to 3000' direct DUTAL and hold, or as directed by ATC. | | | | | | | |
| Alt Set: hPa (IN on req) | | TDZ Elev: 6 hPa | | Trans alt: 3000' | | MSA RW27 | |
| Trans level: FL40 or FL45 as assigned by ATC. 1. GPS required. | | | | | | | |



| | | | | | | | | | | |
|-----------------------|-----|-----|-----|-----|-----|-----|--------|-------|-------|-------|
| Gnd speed-Kts | 70 | 90 | 100 | 120 | 140 | 160 | PAPI-L | 2000' | 3000' | DUTAL |
| Descent angle [3.00°] | 372 | 478 | 531 | 637 | 743 | 849 | | | | |
| MAP at RW27 | | | | | | | | | | |

| | | | |
|---------------------------------------|--|-----------------------------------|-----------------------------|
| STRAIGHT-IN LANDING RWY 27 | | CIRCLE-TO-LAND | |
| LNAV/VNAV DA(H) 420' (255') | | LNAV MDA(H) 540' (375') | |
| 1.6 km | | 1.6 km | |
| 1.6 km | | Not Authorized North of Rwy 09-27 | |
| | | Max Kts | MDA(H) |
| | | 100 | 600' (431') - 1.6 km |
| 1.6 km | | 135 | 620' (451') - 1.6 km |
| | | 180 | 620' (451') - 2.0 km |
| 1.6 km | | 205 | 720' (551') - 2.8 km |