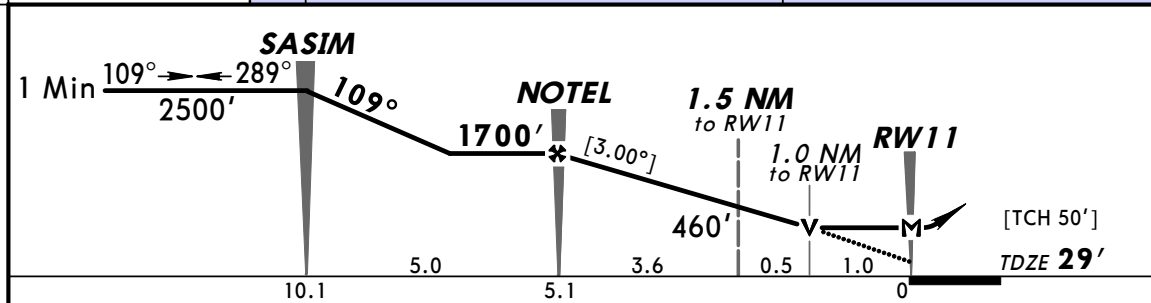
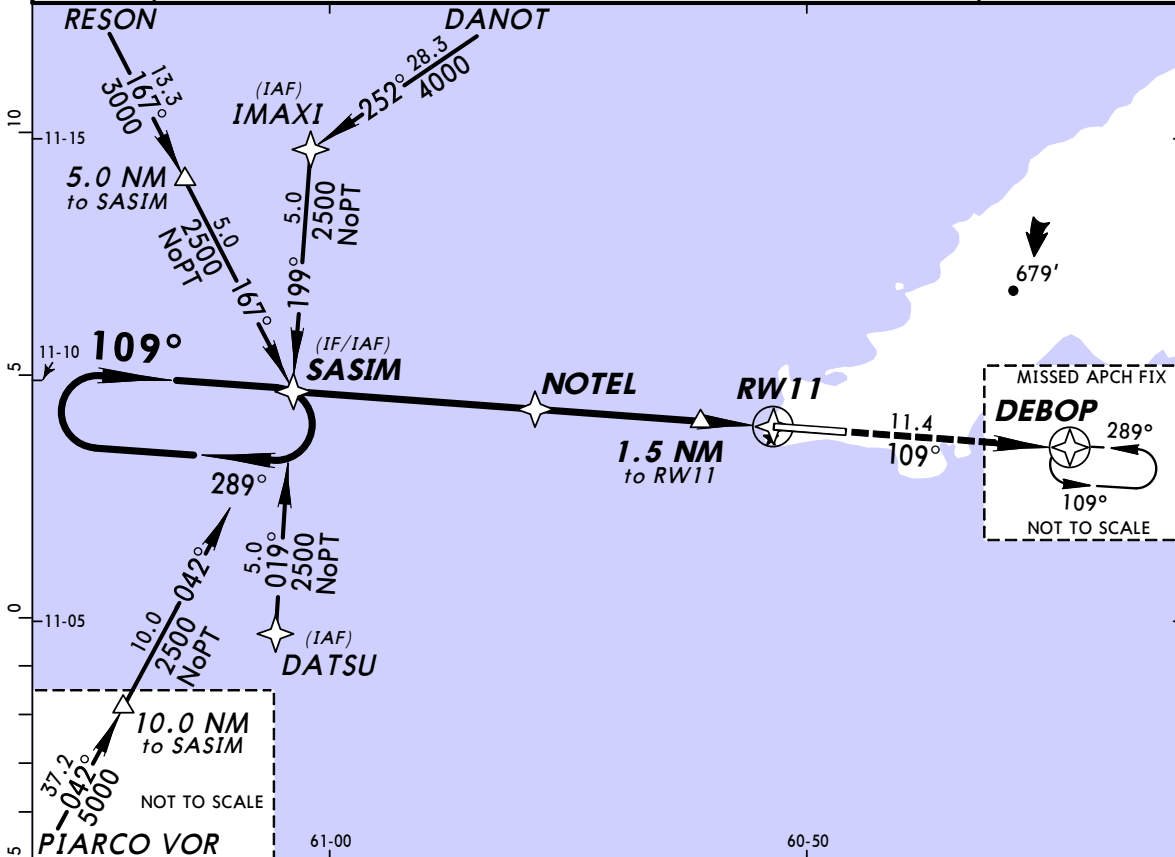


**TTCP/TAB**  
**CROWN POINT INTL**

**JEPPESEN**  
23 JAN 09 (12-1)

**SCARBOROUGH, TOBAGO I**  
**RNAV (GPS) Rwy 11**

*CROWN POINT Approach		*CROWN POINT Tower			*Ground
119.0		118.4			121.7
RNAV	Final Apch Crs <b>109°</b>	Minimum Alt <b>NOTEL</b> <b>1700' (1671')</b>	MDA(H) <b>380' (351')</b>	Apt Elev <b>38'</b> TDZE <b>29'</b>	3000'  MSA RW11
<b>MISSED APCH: Climb to 2500' direct DEBOP and hold, or as directed by ATC.</b>					
Alt Set: hPa		TDZ Elev: 1 hPa	Trans level: FL 55	Trans alt: 4100'	
<b>1. GPS required.</b>					



Gnd speed-Kts	70	90	100	120	140	160	SALS PAPI 2500'	D → DEBOP
Descent angle [3.00°]	372	478	531	637	743	849		
MAP at RW11								

STRAIGHT-IN LANDING RWY11		CIRCLE-TO-LAND	
MDA(H) <b>380' (351')</b>		Not Authorized North of Rwy 11-29	
ALS out		Max Kts	MDA(H)
A		100	420' (382') - 1600m
B	1600m	135	500' (462') - 1600m
C		180	500' (462') - 2400m
D	2000m	205	600' (562') - 3600m

PANS OPS