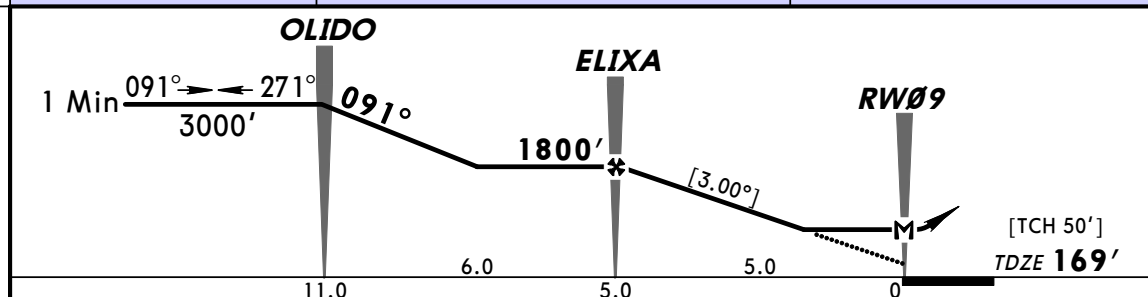
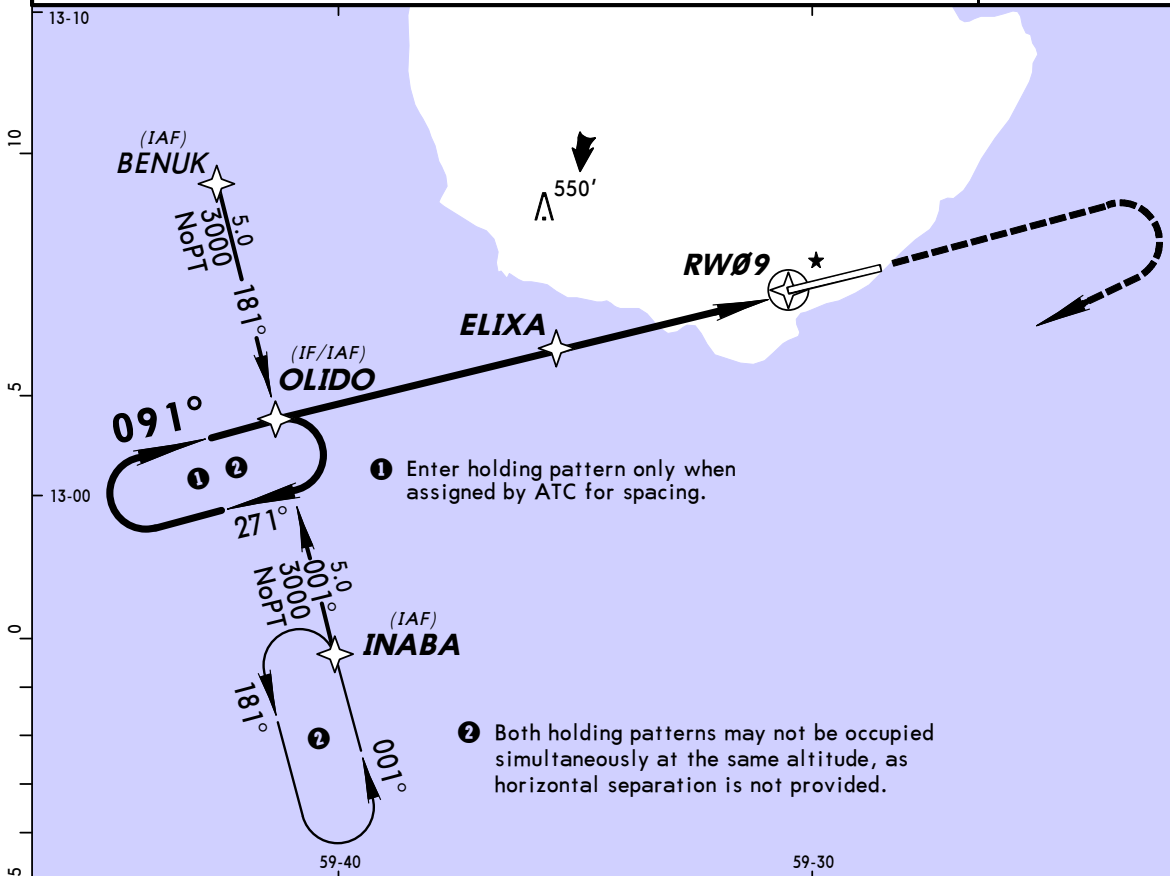


**TBPB/BGI (BRIDGETOWN)** **JEPPESEN** **BARBADOS**  
**GRANTLEY ADAMS INTL** 1 MAY 09 (12-1) **Eff 7 May** **RNAV (GPS) Rwy 09**

ATIS	Radar vectoring thru ADAMS Radar			ADAMS Approach (R)	ADAMS Tower	Ground
132.72	120.7	121.2	128.85	129.35	118.7	121.9
RNAV	Final Aptch Crs <b>091°</b>	Minimum Alt <b>ELIXA</b> 1800' (1631')	LNAV MDA(H) <b>600' (431')</b>	Apt Elev 169' TDZE 169'		3000'
<b>MISSED APCH: Climb to 2000', then climbing RIGHT turn to 3000' direct INABA and hold, or as directed by ATC.</b>						
Alt Set: hPa (IN on req)		TDZ Elev: 6 hPa		Trans alt: 3000'		
Trans level: FL40 or FL45 as assigned by ATC. 1. GPS required.						MSA RW09



Gnd speed-Kts	70	90	100	120	140	160	HIALS PAPI	2000'	3000'	D → INABA
Descent angle [3.00°]	372	478	531	637	743	849		↑	RT	
MAP at RW09										

STRAIGHT-IN LANDING RWY 09		CIRCLE-TO-LAND	
LNAV/VNAV		Not Authorized North of Rwy 09-27	
LNAV		Max Kts	
MDA(H) 600' (431')		MDA(H)	
ALS out			
A	1.6 km	100	600' (431') - 1.6 km
B	2.0 km	135	620' (451') - 1.6 km
C	2.4 km	180	620' (451') - 2.0 km
D	NA	205	720' (551') - 2.8 km

PANS OPS