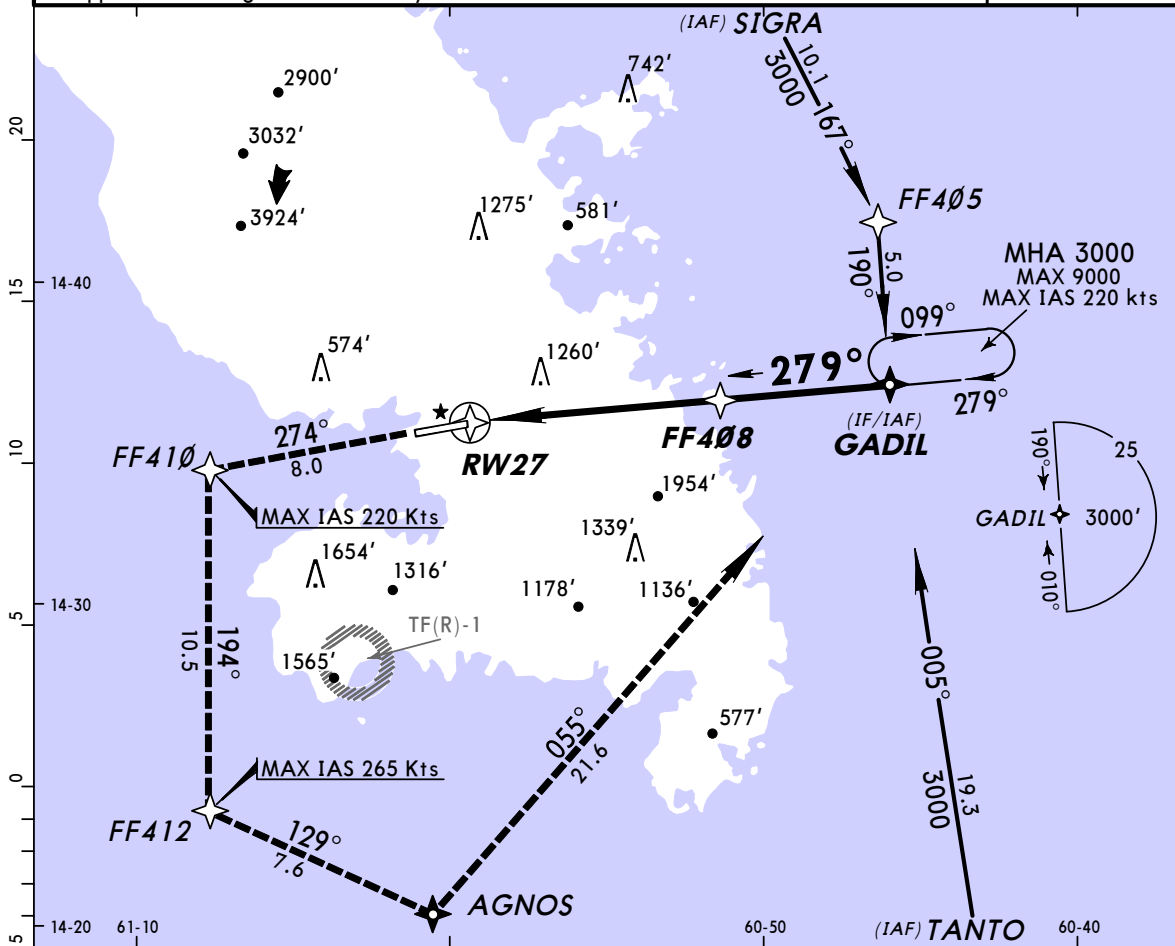


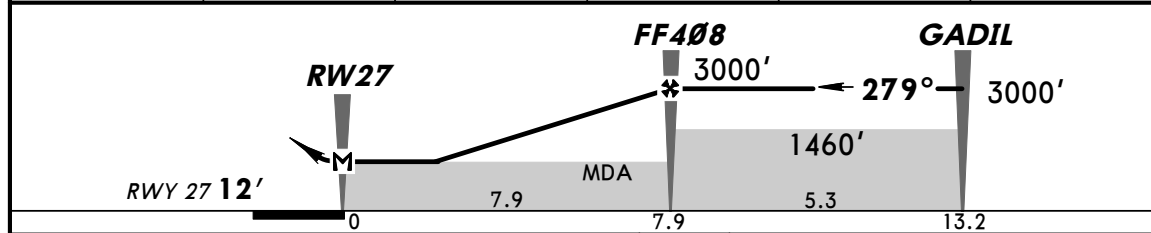
TFFF/FDF
AIME CESAIRE

JEPPESEN MARTINIQUE, MARTINIQUE
9 JAN 09 (12-2) Eff 15 Jan RNAV (GNSS) Rwy 27

*ATIS 127.85		MARTINIQUE Approach 121.0		MARTINIQUE Tower 118.5		Ground 121.9
RNAV	Final Apch Crs 279°	Minimum Alt (CONDITIONAL) Refer to Profile	RNAV MDA(H) 1270' (1258')	Apt Elev 16' Rwy 27 12'		6000'
MISSED APCH: Climb magnetic 274° to FF410 (MAX IAS 220 kts), then turn LEFT to FF412 (MAX IAS 265 kts) and then turn LEFT to AGNOS to enter GADIL holding climbing up to 3000' minimum. Or proceed according to ATS. Climb to 2000' prior to level acceleration.						
Alt Set: hPa		Rwy Elev: 0 hPa		Trans level: By ATC		MSA ARP
1. Approach not aligned with runway centerline.						



DIST to RW27	3.0	4.0	5.0	6.0	7.0
ALTITUDE	1270'	1545'	1915'	2285'	2655'



Gnd speed-Kts	70	90	100	120	140	160	REIL PAPI-L	↑ on 274° FF410	
Descent Gradient	6.1%	432	556	618	741	865			988
MAP at RW27									
FAF to MAP	7.9	6:46	5:16	4:44	3:57	3:23	2:58		

PANS OPS	JAR-OPS STRAIGHT-IN LANDING RWY 27						CIRCLE-TO-LAND		
	RNAV						Max Kts		
	MDA(H) 1270' (1258')						MDA(H)		
	A	RVR 1500m					110	1490' (1474') - 1500m	
	B	RVR 1500m					135	1490' (1474') - 1600m	
C	RVR 2000m					180	1590' (1574') - 2400m		
D	RVR 2000m					205	1710' (1694') - 3600m		