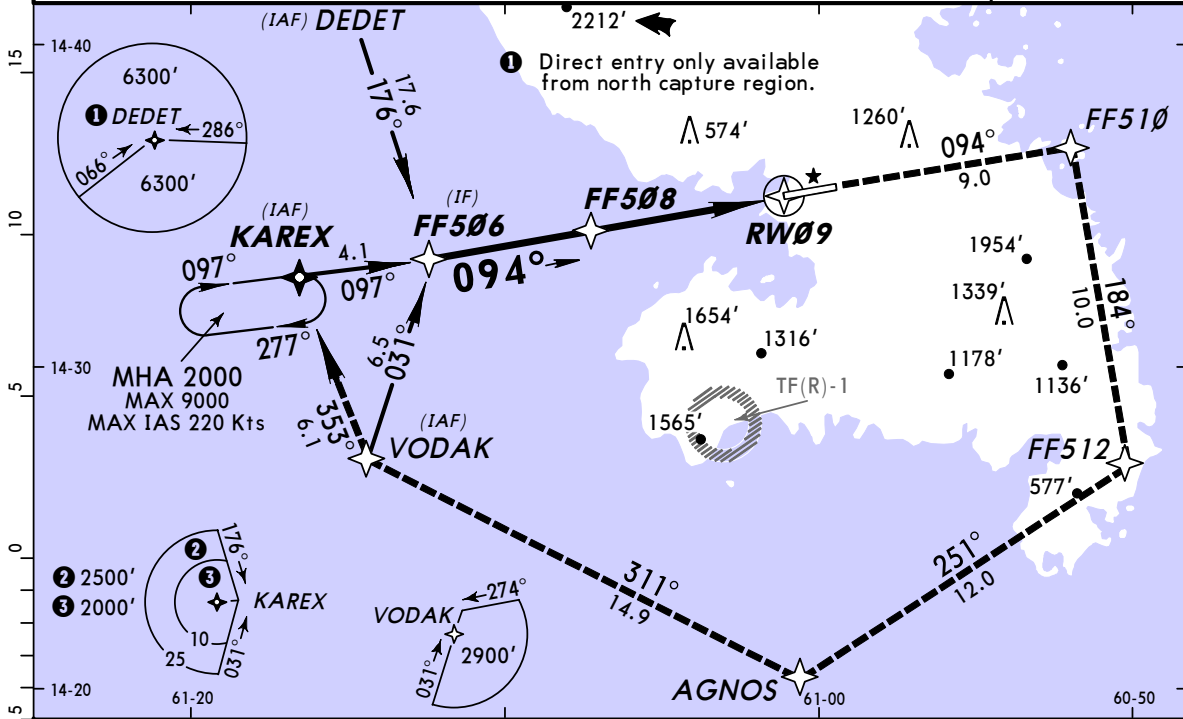


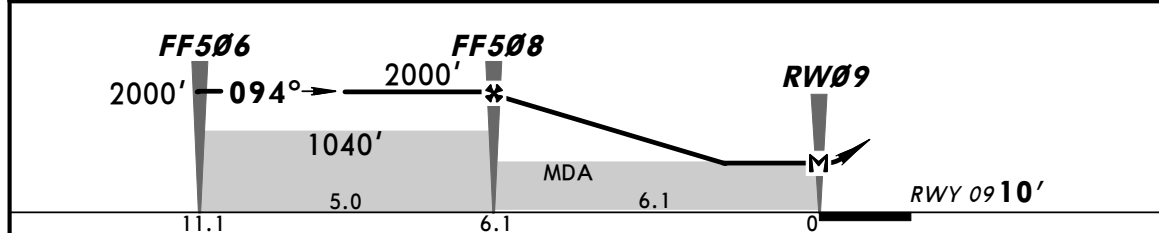
TFFF/FDF
AIME CESAIRE

JEPPESEN MARTINIQUE, MARTINIQUE
9 JAN 09 (12-1) Eff 15 Jan **RNAV (GNSS) Rwy 09**

*ATIS 127.85		MARTINIQUE Approach 121.0	MARTINIQUE Tower 118.5	Ground 121.9
RNAV	Final Apch Crs 094°	Minimum Alt (CONDITIONAL) Refer to Profile	LNAV MDA(H) Refer to Minimums	Apt Elev 16' Rwy 09 10'
MISSED APCH: Climb direct to FF510 (magnetic 094°), then turn RIGHT to FF512, then turn RIGHT to AGNOS, and then turn RIGHT to VODAK to enter KAREX holding climbing up to 3000' minimum. Or proceed according to ATS. Climb to 2000' prior to level acceleration.				TAA 25 NM IAF
Alt Set: hPa	Rwy Elev: 0 hPa	Trans level: By ATC	Trans alt: 9000'	



DIST to RW09	6.0	5.0	4.0	3.0
ALTITUDE	1975'	1660'	1340'	1020'



Gnd speed-Kts	70	90	100	120	140	160	REIL PAPI-L	↑ D FF510	
Descent Gradient	5.2%	369	474	527	632	737			843
MAP at RW09	FAF to MAP 6.1	5:14	4:04	3:40	3:03	2:37			2:17

PANS OPS	STRAIGHT-IN LANDING RWY 09		CIRCLE-TO-LAND	
	LNAV		Not Authorized at Night	
	Missed Apch climb gradient mim 2.5%			
	A: MDA(H) 800' (790') C: MDA(H) 840' (830')			
	B: MDA(H) 810' (800') D: MDA(H) 860' (850')			
	Missed Apch climb gradient mim 3.0%			
	A: MDA(H) 700' (690') C: MDA(H) 750' (740')			
	B: MDA(H) 720' (710') D: MDA(H) 770' (760')			
	Missed Apch climb gradient mim 4.0%			
	A: MDA(H) 490' (480') C: MDA(H) 560' (550')			
	B: MDA(H) 520' (510') D: MDA(H) 590' (580')			
		Max Kts	MDA(H)	
A	RVR 1500m	110	1490' (1474') - 1500m	
B		135	1490' (1474') - 1600m	
C	RVR 2000m	180	1590' (1574') - 2400m	
D		205	1710' (1694') - 3600m	