

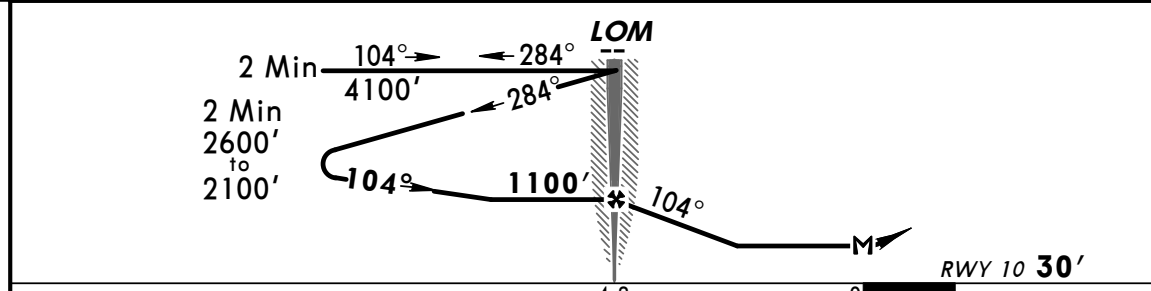
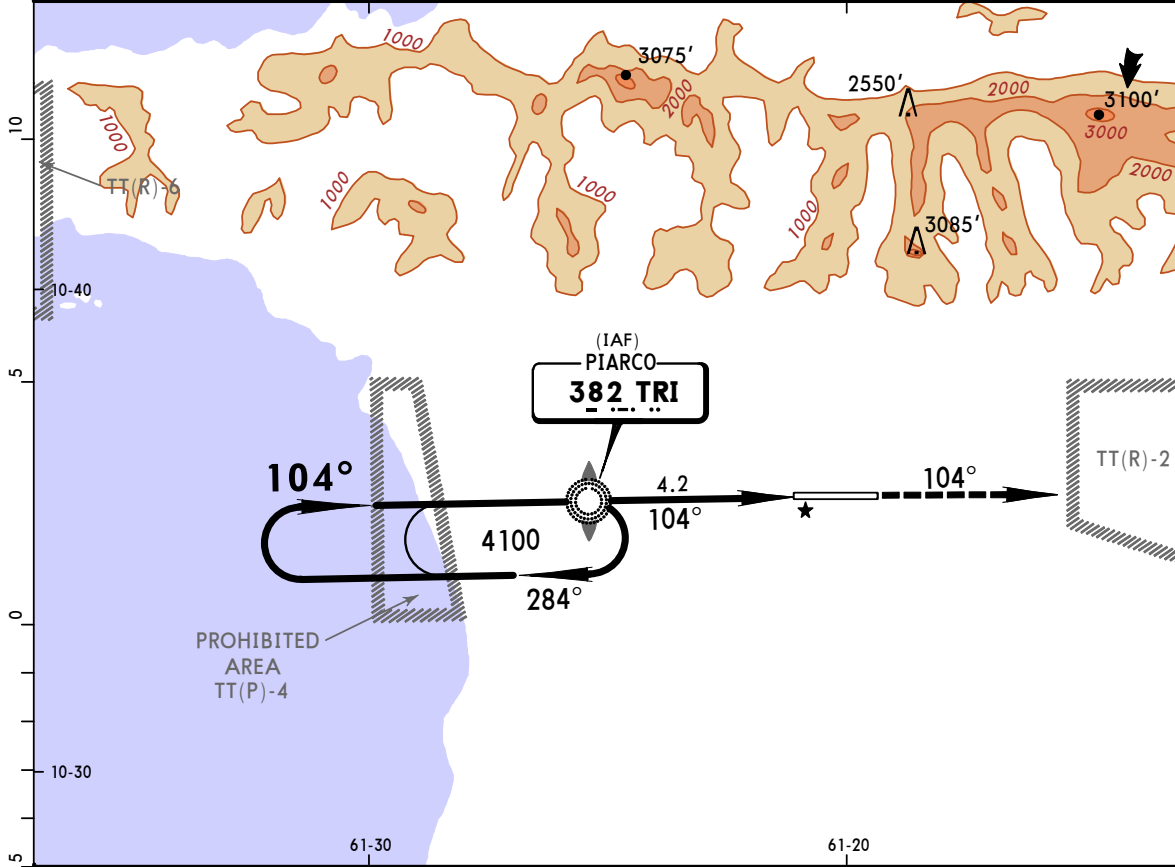
TTPP/POS
PIARCO INTL

JEPPESEN PORT OF SPAIN, TRINIDAD

13 AUG 04 (16-1)

NDB Rwy 10

ATIS 126.7		PIARCO Approach 119.0		PIARCO Tower 118.1		Ground 121.9
NDB TRI 382	<i>Final Apch Crs</i> 104°	<i>Minimum Alt LOM</i> 1100' (1070')	<i>MDA(H)</i> 530' (500')	<i>Apt Elev</i> 58'	RWY 10 30'	
MISSED APCH: Climb to 4100' on 104°, RIGHT turn to TRI LOM or as directed by ATC.						4100'
Alt Set: hPa		Rwy Elev: 1 hPa		Trans level: FL 55		Trans alt: 4100'
						MSA TRI LOM



<i>Gnd speed-Kts</i>	70	90	100	120	140	160	HIALS	4100'	on 104°	RT	TRI 382
<i>LOM to MAP</i>	4.2	3:36	2:48	2:31	2:06	1:48	1:34	↑			

STRAIGHT-IN LANDING RWY10

MDA(H) **530' (500')**

ALS out

PANS OPS	A	1½ NM
	B	
	C	
	D	