

**TTCP/TAB**  
**CROWN POINT INTL**

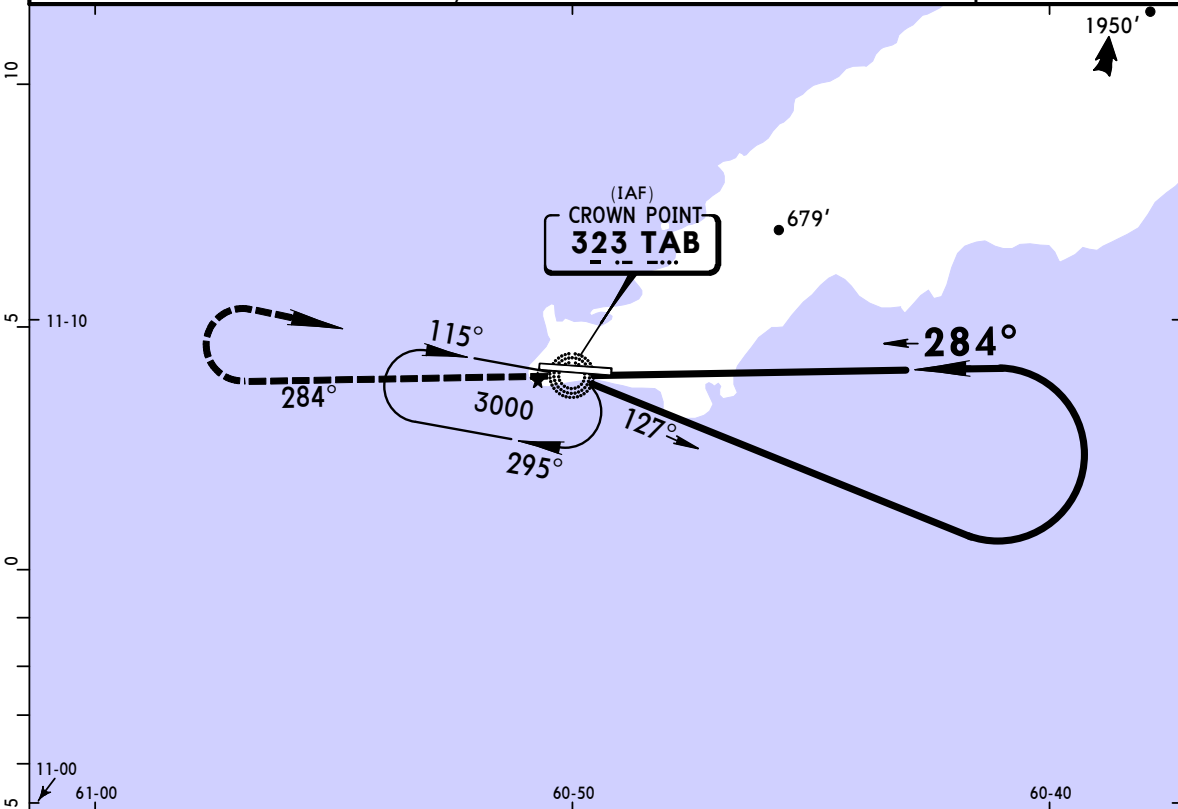
**JEPPESEN SCARBOROUGH, TOBAGO I**

29 JUN 07 **16-6** Eff 5 Jul

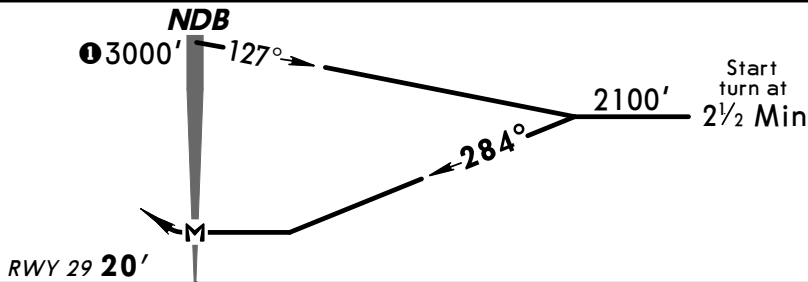
CAT C & D

**NDB Rwy 29**

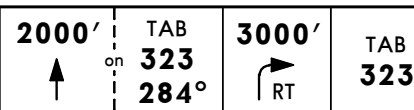
PIARCO Approach		*CROWN POINT Tower		*Ground		
119.0		118.4		121.7		
NDB TAB <b>323</b>	Final Apch Crs <b>284°</b>	No FAF	MDA(H) <b>960' (940')</b>	Apt Elev <b>38'</b> Rwy 29 <b>20'</b>		
<b>MISSED APCH: Climb STRAIGHT AHEAD on TAB NDB bearing 284° to 2000', then turn RIGHT to return to TAB NDB at 3000' or as directed by ATC.</b>						
Alt Set: hPa		Rwy Elev: 1 hPa		Trans level: FL 55		
				Trans alt: 4100'		
1. Final approach track offset by 5°. 2. Final approach track intercepts runway centerline at 0.8 NM from Threshold Rwy 29.						



① Arrival not below MSA or 3000', whichever is higher.

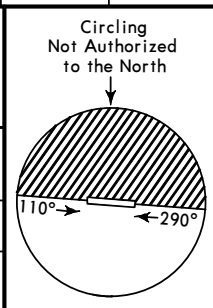


Gnd speed-Kts	70	90	100	120	140	160
Descent Gradient 5.2%	369	474	527	632	737	843
MAP at NDB						



STRAIGHT-IN LANDING RWY 29	
MDA(H) <b>960' (940')</b>	
A	NOT APPLICABLE
B	NOT APPLICABLE
C	4400m
D	4800m

CIRCLE-TO-LAND	
Max Kts	MDA(H)
A	NOT APPLICABLE
B	NOT APPLICABLE
180	960' (922') - 4400m
205	960' (922') - 4800m



PANS OPS