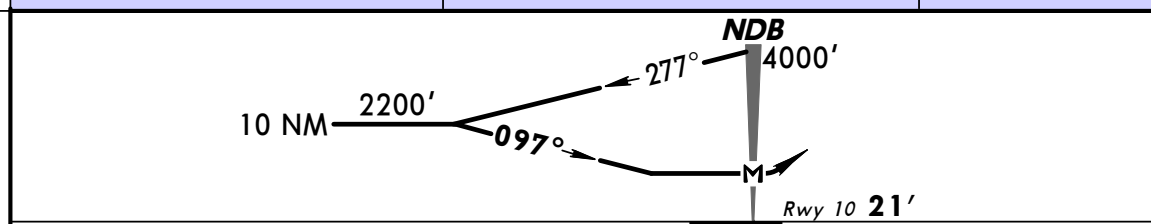
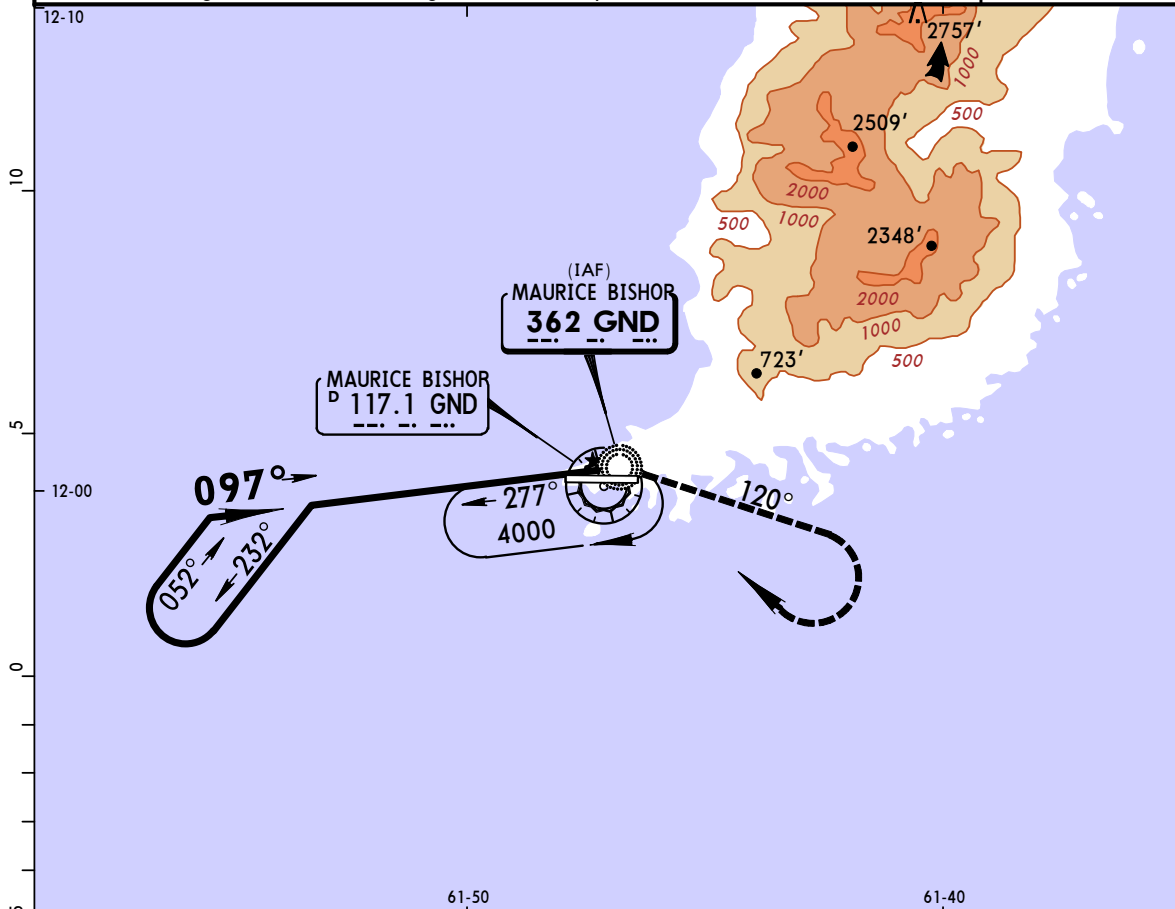


TGPY/GND  
MAURICE BISHOP INTL

JEPPESEN  
7 AUG 09 (16-1)

ST GEORGES, GRENADA  
NDB Rwy 10

*MAURICE BISHOP Approach <b>119.4</b>		*MAURICE BISHOP Tower <b>118.9</b>		*Ground <b>121.9</b>	
NDB GND <b>362</b>	Final Apch Crs <b>097°</b>	No FAF	MDA(H) <b>700' (679')</b>	Apt Elev <b>41'</b> Rwy 10 <b>21'</b>	4000'  MSA GND VOR
<b>MISSED APCH: Climbing RIGHT turn on track 120° to 2000', then climbing RIGHT turn to return to GND NDB at 4000', or as directed by ATC.</b>					
Alt Set: hPa (IN on req)    Rwy Elev: 1 hPa    Trans level: By ATC    Trans alt: 4000' 1. CAUTION: High terrain north through east from airport.					



ALS	<b>2000'</b>	on <b>120°</b>	<b>4000'</b>	GND
PAPI	↙ RT		↘ RT	<b>362</b>

STRAIGHT-IN LANDING RWY 10			CIRCLE-TO-LAND		
MDA(H) <b>700' (679')</b>			Not Authorized North of Extended Centerline Rwy 10 Only		
ALS out			MDA(H)		
A	1600m		Max Kts	760'(719')-1600m	
B			100		
C	2800m		135	800'(759')-3600m	
D	3200m		180	800'(759')-4000m	
			205		

PANS OPS