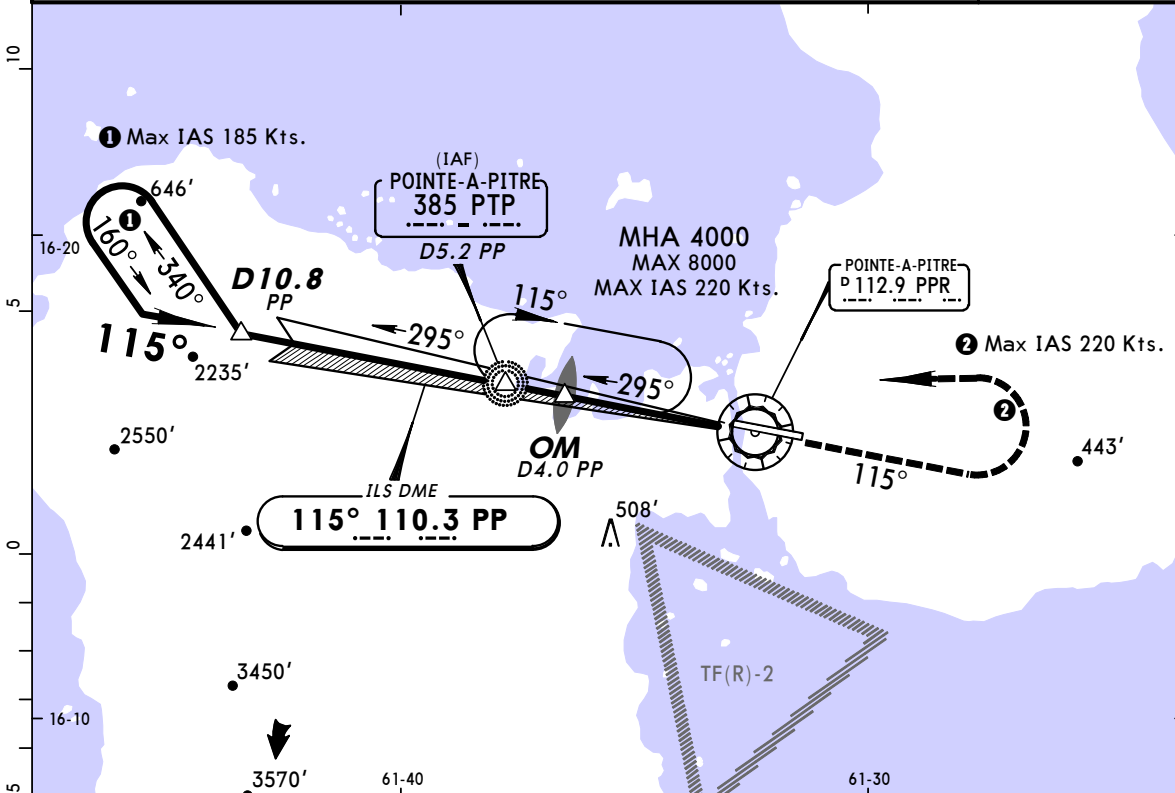
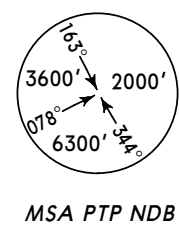


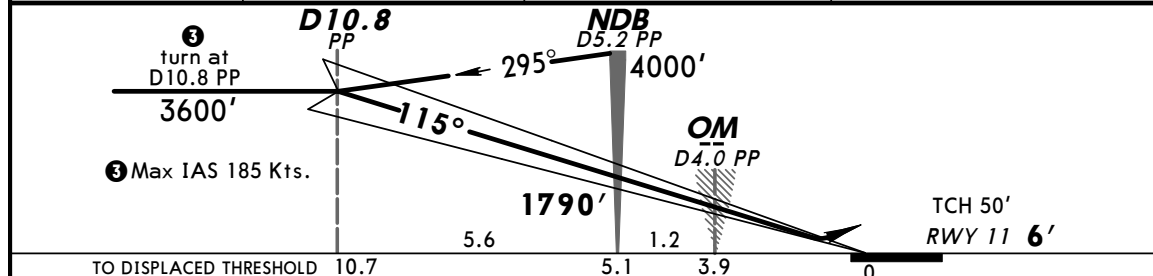
TFFR/PTP
LE RAIZET

JEPPESEN **POINTE-A-PITRE, GUADELOUPE**
3 APR 09 **(11-3)** **Eff 9 Apr** **NDB ILS DME Rwy 11**

ATIS 127.6	RAIZET Approach (R) 121.3 119.05		RAIZET Tower 118.4	Ground 121.85
LOC PP 110.3	Final Apch Crs 115°	Minimum Alt NDB 1790' (1784')	ILS DA(H) 206' (200')	Apt Elev 35' Rwy 11 6'
MISSED APCH: Climb STRAIGHT AHEAD to 1200', turn LEFT to PTP NDB climbing to 4000'. Do not turn before MAP. Climb to 1200' prior to level acceleration. Max IAS in missed approach turn 220 Kts.				
Alt Set: hPa Rwy Elev: 0 hPa Trans level: By ATC Trans alt: 9000' 1. ILS Rwy 11 glide path cover limited to 4 degrees right of runway axis. 2. Procedure prohibited if glide path unusable.				



PP DME	4.0	3.0	2.0
ALTITUDE	1370'	1030'	690'



Gnd speed-Kts	70	90	100	120	140	160	PAPI-L	1200'	4000'	PTP 385	
ILS GS 3.2° or Descent Gradient	5.6%	402	517	574	689	804					919
NDB to MAP	5.1	4:22	3:24	3:04	2:33	2:11					1:55

JAR-OPS		STRAIGHT-IN LANDING RWY 11		CIRCLE-TO-LAND	
		ILS			
		DA(H) 206' (200')			
PANS OPS	A	RVR 1000m		Max Kts	MDA(H) VIS
	B			110	600' (565') - 1500m
	C			135	600' (565') - 1600m
	D			180	910' (875') - 2400m
			205	910' (875') - 3600m	