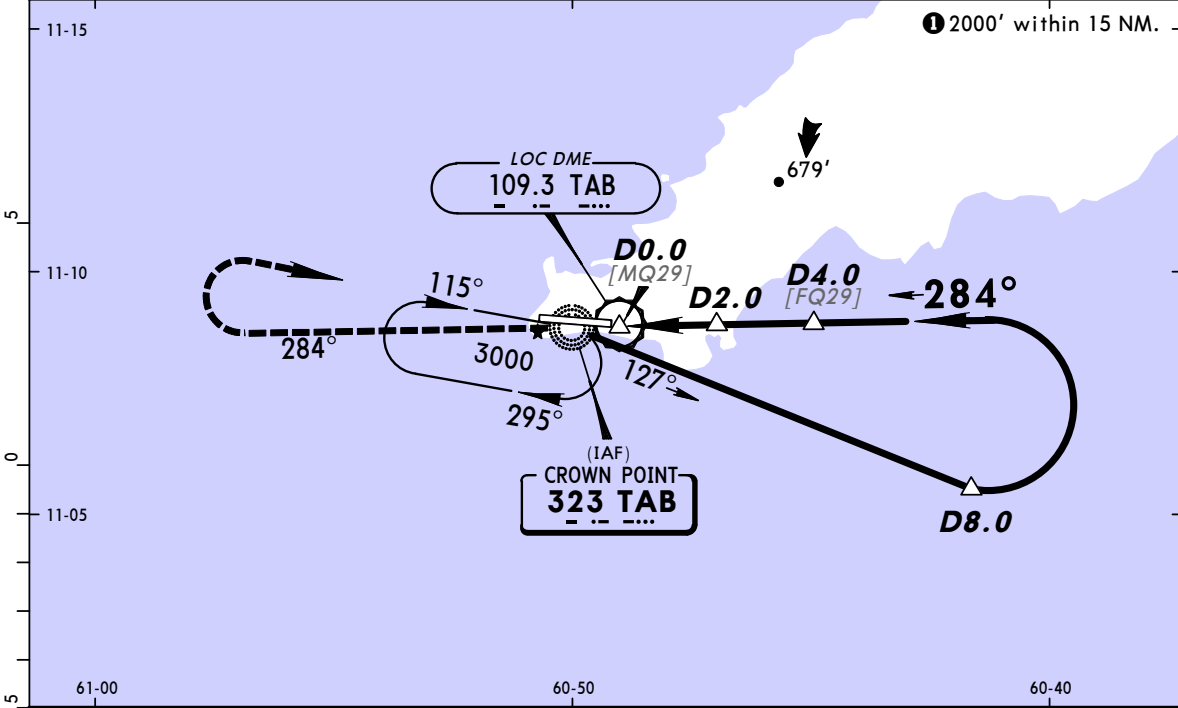


TTCP/TAB
CROWN POINT INTL

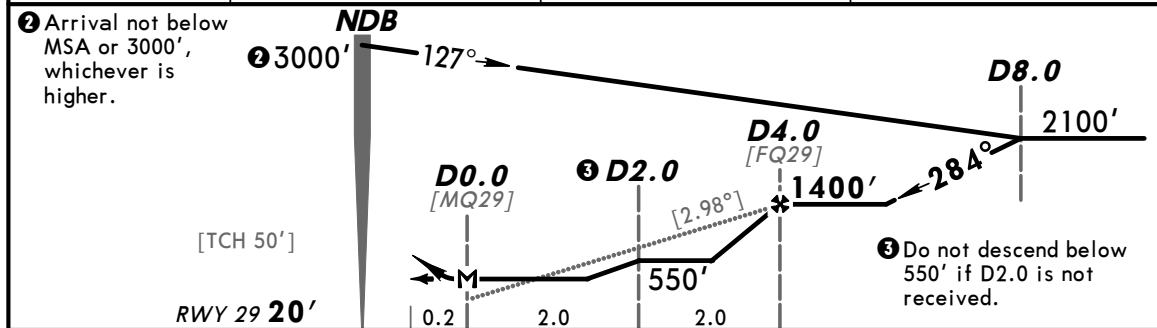
JEPPESEN
2 NOV 07 **(16-4)**

SCARBOROUGH, TOBAGO I
CAT C & D NDB DME Rwy 29

PIARCO Approach 119.0		*CROWN POINT Tower 118.4		*Ground 121.7	
NDB TAB 323	<i>Final</i> <i>Apch Crs</i> 284°	<i>Minimum Alt</i> D4.0 1400' (1380')	<i>MDA(H)</i> (CONDITIONAL) 460' (440')	<i>Apt Elev</i> 38' <i>Rwy 29</i> 20'	<p>MSA TAB NDB</p>
<p>MISSED APCH: Climb STRAIGHT AHEAD on TAB NDB bearing 284° to 2000', then turn RIGHT to return to TAB NDB at 3000' or as directed by ATC.</p>					
<p>Alt Set: hPa Rwy Elev: 1 hPa Trans level: FL 55 Trans alt: 4100'</p> <p>1. Final approach track offset by 5°. 2. DME located 1102' (336m) before threshold on extended centerline.</p>					



TAB DME	2.0	3.0	4.0
ALTITUDE	760'	1080'	1400'



<i>Gnd speed-Kts</i>	70	90	100	120	140	160	2000' on TAB 323 3000' TAB 323 RT
<i>Descent Gradient 5.2% or</i>	369	474	527	633	738	843	
<i>Descent angle [2.98°]</i>							

MAP at D0.0

STRAIGHT-IN LANDING RWY 29			CIRCLE-TO-LAND		Circling Not Authorized to the North
MDA(H) 460' (440') With D2.0		MDA(H) 550' (530') Without D2.0		Max Kts	
A	NOT APPLICABLE	NOT APPLICABLE		A	
B	NOT APPLICABLE	NOT APPLICABLE		B	
C	2000m	2400m		180	638' (600')-2400m
D	2400m	2800m		205	738' (700')-3200m

PANS OPS