

TFFF/FDF

JEPPESEN

MARTINIQUE, MARTINIQUE

2 MAY 08

11-3

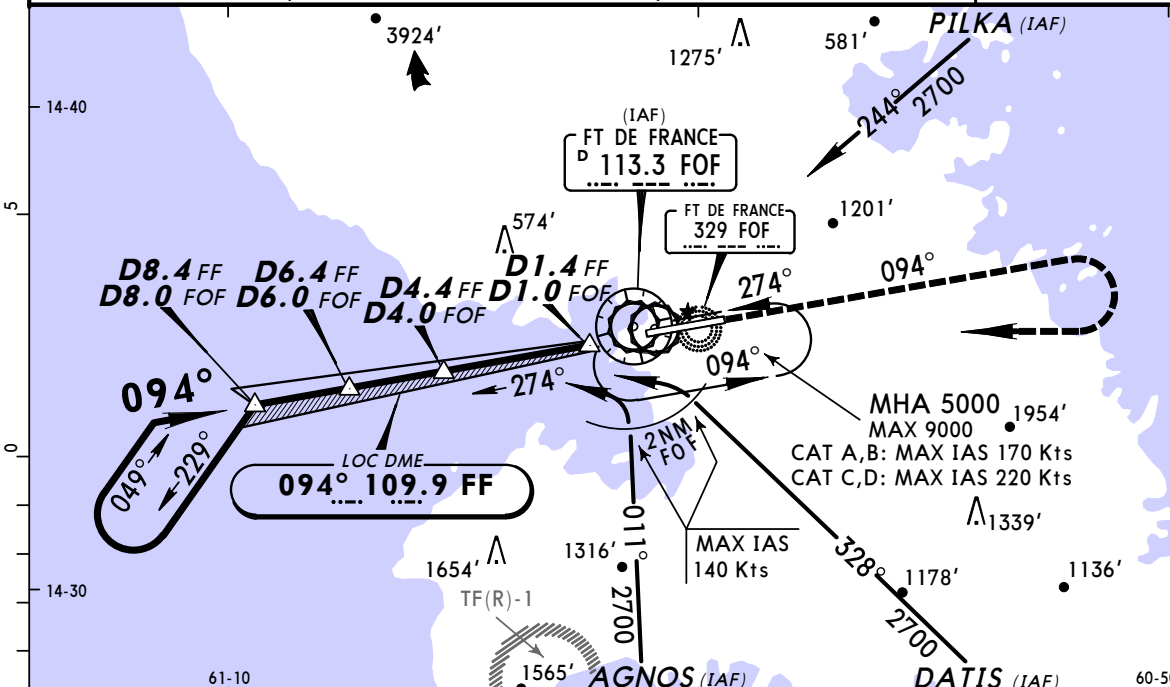
PILKA, AGNOS or DATIS LOC DME Rwy 09

AIME CESAIRE

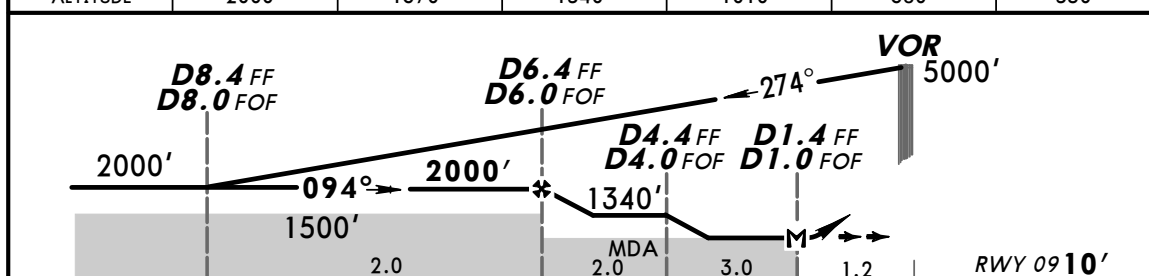
Eff 8 May

VOR DME LOC DME Rwy 09

*ATIS 127.85		MARTINIQUE Approach 121.0		MARTINIQUE Tower 118.5		Ground 121.9	
LOC FF 109.9	Final Apch Crs 094°	Minimum Alt D6.4 FF D6.0 FOF 2000' (1990')	LOC MDA(H) Refer to Minimums	Apt Elev 16'		Rwy 09 10'	
<p>MISSED APCH: Climb STRAIGHT AHEAD to 2500', turn RIGHT to join the holding pattern at FOF VOR climbing to 5000'. Do not turn before FOF VOR. Climb to 2500' prior to level acceleration.</p>							
Alt Set: hPa		Rwy Elev: 0 hPa		Trans level: By ATC		Trans alt: 9000'	
						MSA FOF VOR	



FF DME	6.0	5.0	4.0	3.0	2.0	1.0
ALTITUDE	1870'	1540'	1210'	880'	550'	220'
FOF DME	6.0	5.0	4.0	3.0	2.0	1.0
ALTITUDE	2000'	1670'	1340'	1010'	680'	350'



Gnd speed-Kts	70	90	100	120	140	160			
LOC Descent Gradient 5.2%	377	484	538	646	753	861		REIL	2500' 5000' FOF
MAP at D1.4 FF/D1.0 FOF								PAPI-L	↑ RT 113.3
FAF to MAP	5.0	4:17	3:20	3:00	2:30	2:09	1:53		

JAR-OPS		STRAIGHT-IN LANDING RWY 09 LOC (GS out) With DME				CIRCLE-TO-LAND Not Authorized at Night			
		A: MDA(H) 690' (680') C: MDA(H) 730' (720')				Max Kts			
		B: MDA(H) 710' (700') D: MDA(H) 750' (740')				MDA(H) VIS			
A		RVR 1500m				110	800' (784')	1500m	
B		RVR 2000m				135	1070' (1054')	1600m	
C		RVR 2000m				180	1660' (1644')	2400m	
D		RVR 2000m				205	1990' (1974')	3600m	

PANS OPS