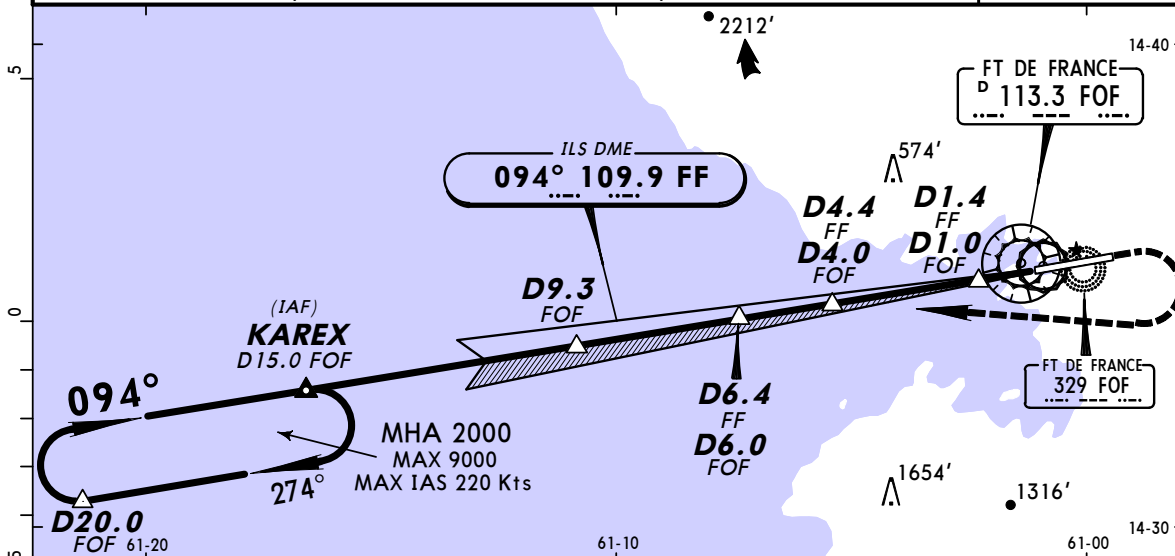


TFFF/FDF  
AIME CESAIRE

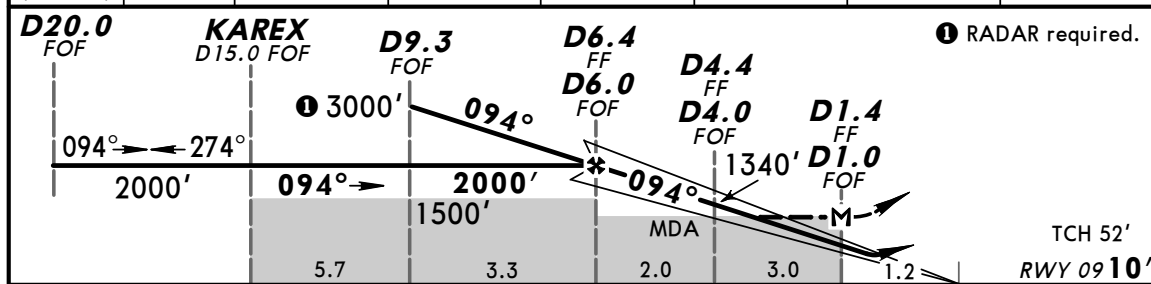
JEPPESEN  
3 APR 09 (11-1)

MARTINIQUE, MARTINIQUE  
KAREX ILS or LOC DME Rwy 09

*ATIS 127.85		MARTINIQUE Approach 121.0		MARTINIQUE Tower 118.5		Ground 121.9	
LOC FF <b>109.9</b>	Final Apch Crs <b>094°</b>	Minimum Alt <b>D6.4 FF</b> <b>D6.0 FOF</b> <b>2000' (1990')</b>	ILS DA(H) Refer to Minimums	Apt Elev 16' Rwy 09 10'			
<b>MISSED APCH:</b> Climb STRAIGHT AHEAD. At 2500' turn RIGHT to intercept and follow outbound FOF VOR R-274 to KAREX/D15.0 FOF climbing to 3000'. Do not turn before FOF VOR. Climb to 2500' prior to level acceleration.							MSA FOF VOR
Alt Set: hPa		Rwy Elev: 0 hPa		Trans level: By ATC		Trans alt: 9000'	



LOC (GS out)	FF DME	6.0	5.0	4.0	3.0	2.0	1.0
	ALTITUDE	1870'	1540'	1210'	880'	550'	220'
LOC (GS out)	FOF DME	6.0	5.0	4.0	3.0	2.0	1.0
	ALTITUDE	2000'	1670'	1340'	1010'	680'	350'



Gnd speed-Kts	70	90	100	120	140	160	REIL PAPI-L	2500'	RT	FOF 113.3 R-274
ILS GS 3.00° or LOC Descent Gradient 5.2%	377	484	538	646	753	861				
MAP at D1.4 FF/D1.0 FOF	FAF to MAP 5.0	4:17	3:20	3:00	2:30	2:09	1:53			

<b>JAR-OPS</b>				<b>STRAIGHT-IN LANDING RWY 09</b>				<b>CIRCLE-TO-LAND</b>			
<b>ILS</b> Missed Apch climb gradient mim 2.5% A: DA(H) <b>470'</b> (460') C: DA(H) <b>490'</b> (480') B: DA(H) <b>480'</b> (470') D: DA(H) <b>500'</b> (490') Missed Apch climb gradient mim 3.0% A: DA(H) <b>280'</b> (270') C: DA(H) <b>310'</b> (300') B: DA(H) <b>300'</b> (290') D: DA(H) <b>330'</b> (320') Missed Apch climb gradient mim 4.0% DA(H) <b>210'</b> (200')				<b>LOC (GS out)</b> With DME A: <b>690'</b> (680') B: <b>710'</b> (700') C: <b>730'</b> (720') D: <b>750'</b> (740')				Not Authorized North Of Rwy At Night			
A	<b>1</b> RVR 1200m			RVR 1500m			Max Kts	MDA(H)		VIS	
B							110	800' (784')		1500m	
C							135	1070' (1054')		1600m	
D							180	1660' (1644')		2400m	
				205		1990' (1974')		3600m			

**1** Mim 4%: RVR1000m.