

**TFFF/FDF**  
**AIME CESAIRE**

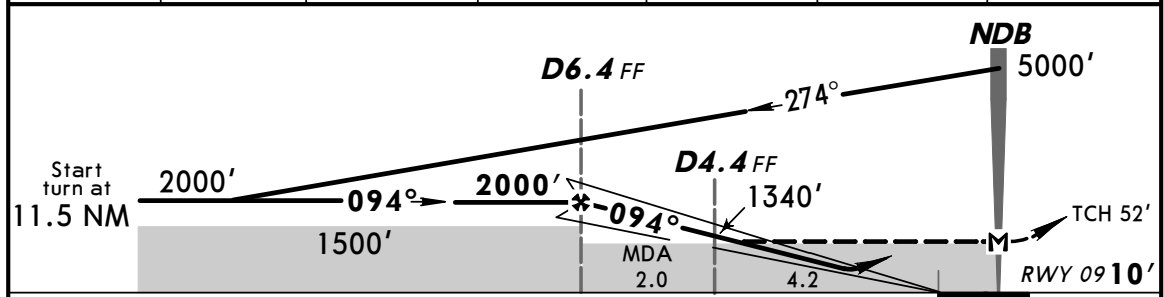
**JEPPESEN**  
2 MAY 08  
**Eff 8 May** (11-5)

**MARTINIQUE, MARTINIQUE**  
**CAT C & D** **FOF NDB ILS Rwy 09**

*ATIS <b>127.85</b>		MARTINIQUE Approach <b>121.0</b>		MARTINIQUE Tower <b>118.5</b>		Ground <b>121.9</b>	
LOC FF <b>109.9</b>	Final Apch Crs <b>094°</b>	Minimum Alt <b>D6.4 FF</b> 2000' (1990')	ILS DA(H) Refer to Minimums	Apt Elev 16' Rwy 09 10'			
<b>MISSED APCH:</b> Climb STRAIGHT AHEAD to 2500', turn RIGHT to enter the holding pattern at FOF NDB climbing to 5000'. Do not turn before FOF NDB. Climb to 2500' prior to level acceleration. Max IAS 170 Kts in turn.							
Alt Set: hPa		Rwy Elev: 0 hPa		Trans level: By ATC		Trans alt: 9000'	
						MSA FOF NDB	



LOC (GS out)	FF DME	6.0	5.0	4.0	3.0	2.0
	ALTITUDE	1840'	1540'	1210'	880'	550'



Gnd speed-Kts	70	90	100	120	140	160	REIL	2500'	5000'	FOF
ILS GS 3.00° or LOC Descent Gradient 5.2%	377	484	538	646	753	861	PAPI-L	↑	RT	329
MAP at NDB										

<b>JAR-OPS</b>		STRAIGHT-IN LANDING RWY 09			CIRCLE-TO-LAND		
ILS		Missed Apch climb gradient mim 2.5%			Not Authorized at Night		
C: DA(H) 490' (480') D: DA(H) 500' (490')		LOC (GS out) With DME					
Missed Apch climb gradient mim 3.0%		C: 730' (720')					
C: DA(H) 310' (300') D: DA(H) 330' (320')		MDA(H) D: 750' (740')					
Missed Apch climb gradient mim 4.0%		Max Kts					
DA(H) 210' (200')		180			MDA(H) VIS		
C	RVR 1200m	RVR 2000m			1660' (1644') 2400m		
D					205 1990' (1974') 3600m		
<b>4%: RVR 1000m</b>							

PANS OPS