

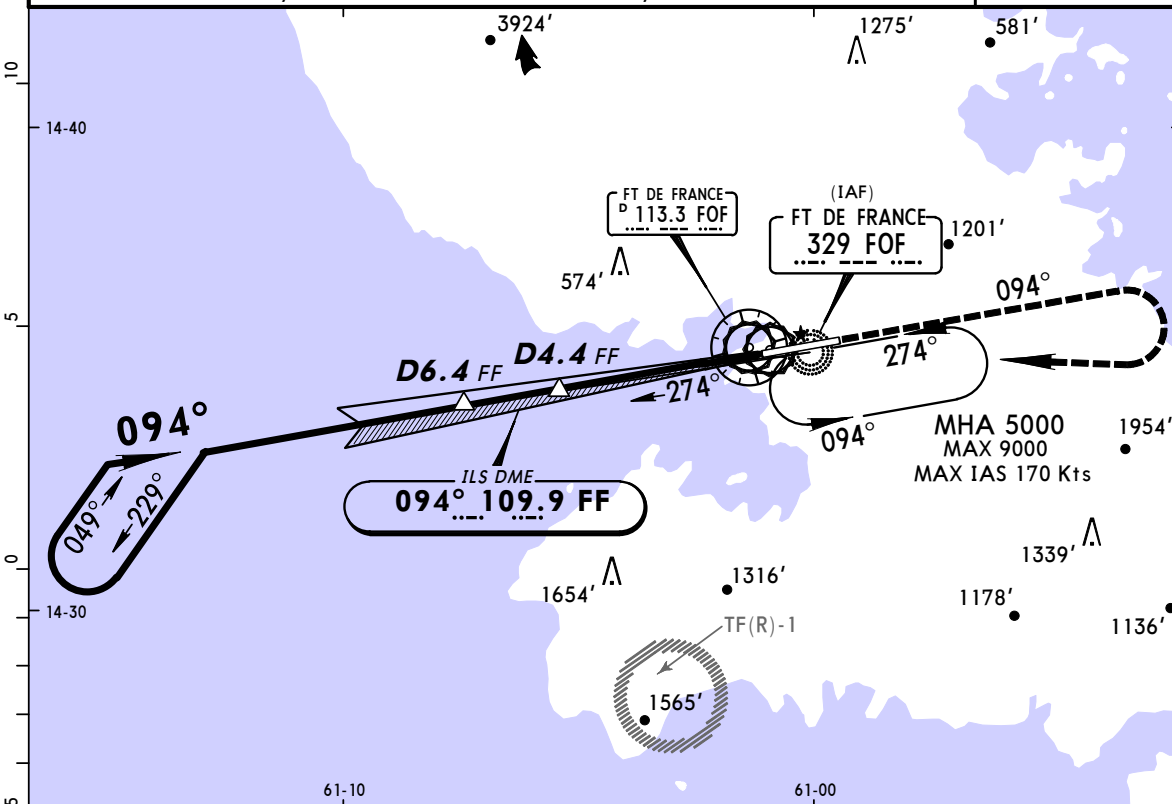
TFFF/FDF
AIME CESAIRE

JEPPESEN
2 MAY 08
Eff 8 May (11-4)

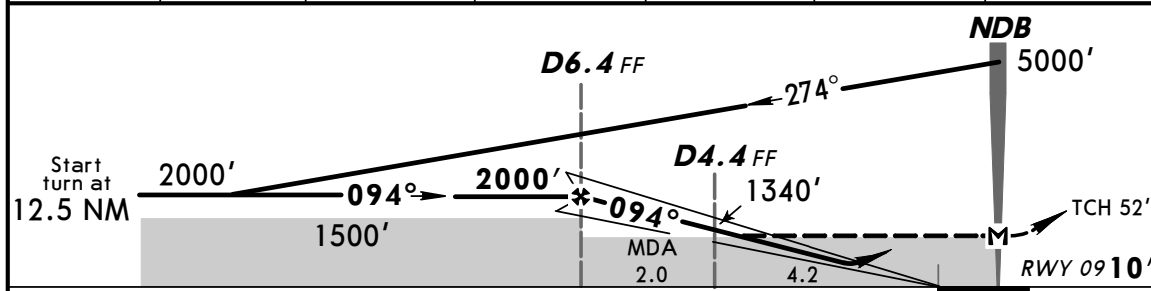
MARTINIQUE, MARTINIQUE
FOF NDB ILS Rwy 09

CAT A & B

*ATIS 127.85		MARTINIQUE Approach 121.0		MARTINIQUE Tower 118.5		Ground 121.9	
LOC FF 109.9	Final Apch Crs 094°	Minimum Alt D6.4 FF 2000' (1990')	ILS DA(H) Refer to Minimums	Apt Elev 16'	Rwy 09 10'		
MISSED APCH: Climb STRAIGHT AHEAD to 2500', turn RIGHT to enter the holding pattern at FOF NDB climbing to 5000'. Do not turn before FOF NDB. Climb to 2500' prior to level acceleration.							
Alt Set: hPa		Rwy Elev: 0 hPa		Trans level: By ATC		Trans alt: 9000'	
						MSA FOF NDB	



LOC (GS out)	FF DME	6.0	5.0	4.0	3.0	2.0
	ALTITUDE	1840'	1540'	1210'	880'	550'



Gnd speed-Kts	70	90	100	120	140	160			
ILS GS 3.00° or LOC Descent Gradient 5.2%	377	484	538	646	753	861	REIL	2500'	5000'
MAP at NDB							PAPI-L	↑	RT
									FOF 329

JAR-OPS		STRAIGHT-IN LANDING RWY 09		CIRCLE-TO-LAND	
ILS Missed Apch climb gradient mim 2.5% A: DA(H) 470' (460') B: DA(H) 480' (470') Missed Apch climb gradient mim 3.0% A: DA(H) 280' (270') B: DA(H) 300' (290') Missed Apch climb gradient mim 4.0% DA(H) 210' (200')		LOC (GS out) With DME A: 690' (680') B: 710' (700') MDA(H)		Not Authorized at Night Max Kts: _____ MDA(H): _____ VIS: _____ 110: 800' (784') 1500m 135: 1070' (1054') 1600m	
A	I RVR 1200m	RVR 1500m			
B					
I Mim 4%: RVR 1000m.					

PANS OPS