

TGPY/GND

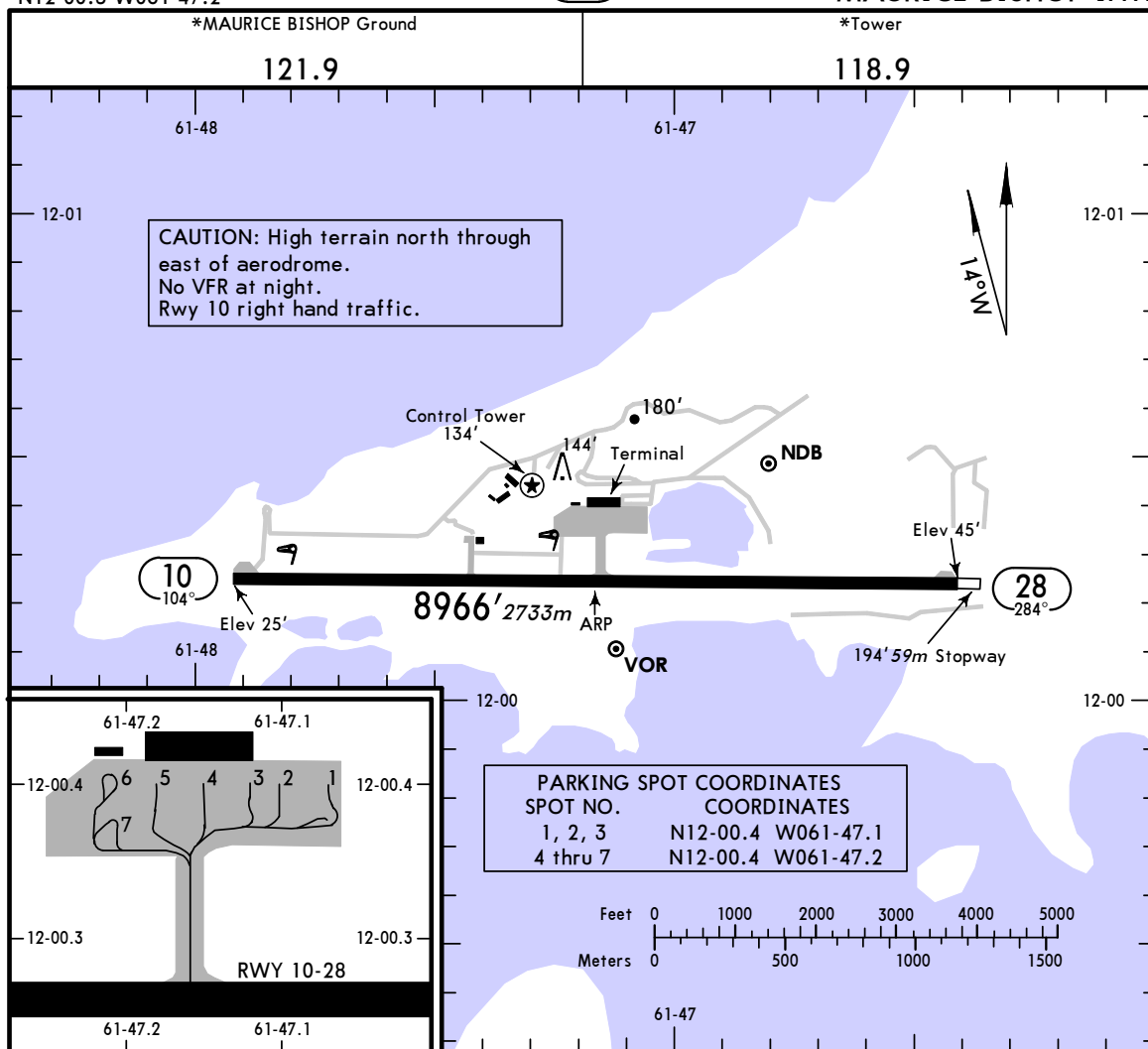
Apt Elev **45'**
N12 00.3 W061 47.2



13 NOV 09 (13-1)

ST GEORGES, GRENADA

MAURICE BISHOP INTL



ADDITIONAL RUNWAY INFORMATION

RWY	Landing Aids	USABLE LENGTHS			WIDTH
		Threshold	LANDING BEYOND Glide Slope	TAKE-OFF	
10	HIRL ALS PAPI-L (angle 3.00°)				148'
28	HIRL				45m

TAKE-OFF & DEPARTURE PROCEDURE

	AIR CARRIER
	All Rwys
A	200m
B	300m
C	
D	400m

DEPARTURE PROCEDURE:

Rwy 10 Northbound: Track segments 276° to 095° clockwise.
Visual climb on runway heading to 400', RIGHT turn track 120° magnetic, ground to 2800', then LEFT on course.

Rwy 10 Southbound: Track segments 096° to 275° clockwise.
Visual climb on runway heading to 400' then RIGHT turn on course.

NOTE: 320' per minute required to 1000'.