

\*E T JOSHUA Approach

\*E T JOSHUA Tower

\*Ground

120.8

118.8

121.9

NDB SV  
403

Final Apch Crs  
103° hdg

No FAF

MDA(H)  
1500' (1434')

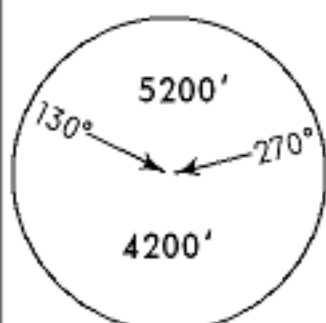
Apt Elev 66'

**MISSED APCH:** Upon reaching MDA(H), (must be at 063° bearing to SV NDB if runway lights are not in sight) maintain heading of 103° and climb to 4200' then follow instructions from ATC.

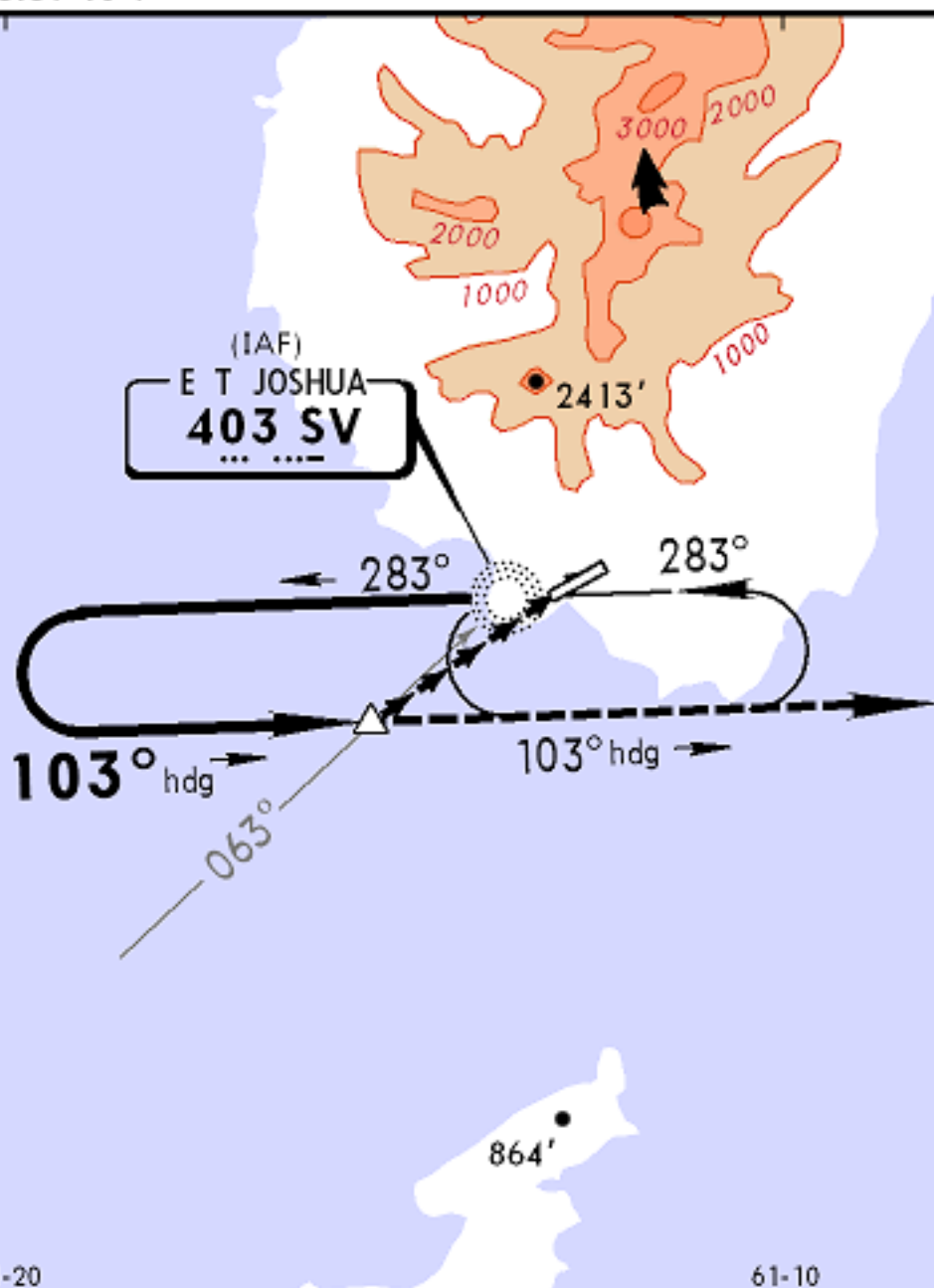
Alt Set: hPa Apt Elev: 2 hPa Trans level: By ATC Trans alt: 5200'

1. Under no circumstances should a pilot after completing left turn on to final approach home to the NDB on the inbound leg. 2. After completing the left turn, terrain clearance cannot be maintained on a heading less than 103°.

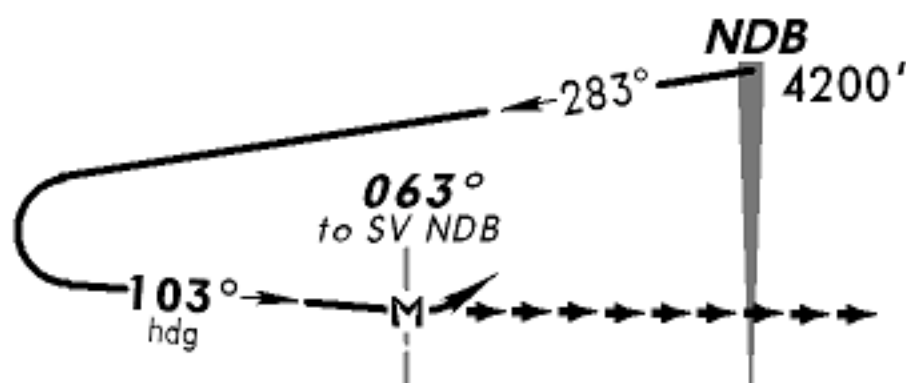
3. Rwy 07 threshold elev 10'.



MSA SV NDB



Start turn at  
3 1/2 Min  
2200'  
to  
1700'



APT. 66'

MAP at 063° to SV NDB

REIL ALS  
PAPI-L 4200' on 103° hdg

STRAIGHT-IN LANDING RWY 07

MDA(H) 1500' (1434')

CIRCLE-TO-LAND

ALS out

A	3200m
B	
C	
D	

A	NA
B	
C	
D	