

\*E T JOSHUA Ground

\*Tower

121.9

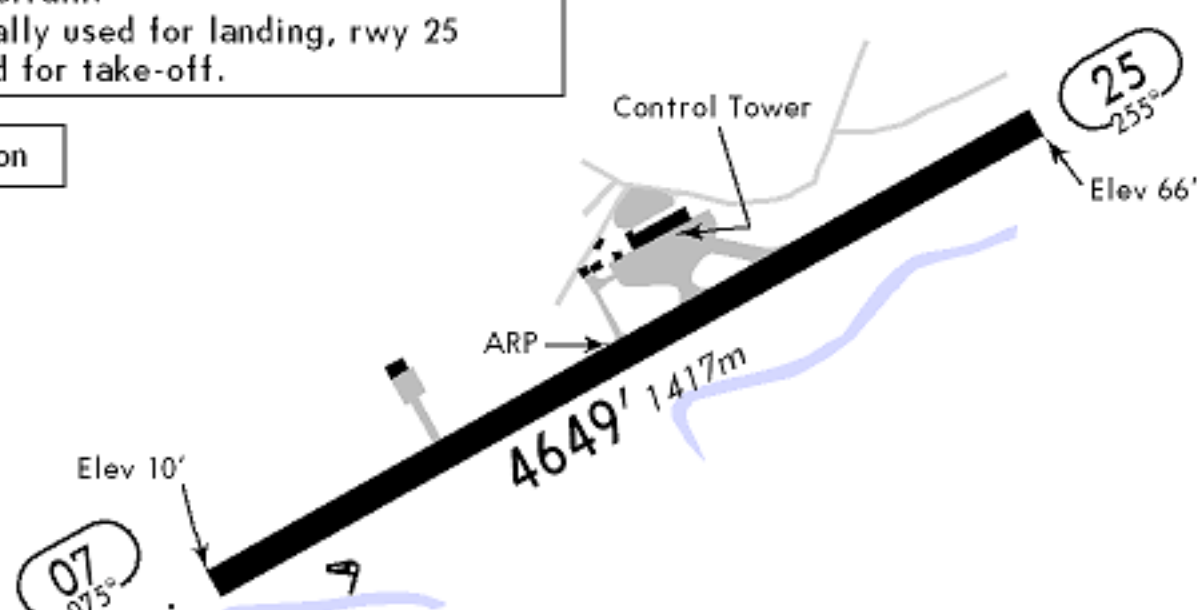
118.8

61-13

61-12

CAUTION: Circling to land not authorized north and east of rwy 07-25.  
Rapidly rising terrain surrounds runway.  
Masts of variable height may be present on approach to rwy 07.  
Night flying prior permission required.  
Take-off on rwy 07 not normally possible due to high terrain.  
Rwy 07 normally used for landing, rwy 25 normally used for take-off.

Airport Beacon



ADDITIONAL RUNWAY INFORMATION

RWY		USABLE LENGTHS		TAKE-OFF	WIDTH
		LANDING Threshold	BEYOND Glide Slope		
07	HIRL ① ALS REIL ② PAPI-L (angle 3.0°)				148'
25	HIRL				45m

① Inverted T lighting system.

② PAPI lights obscured and unusable beyond 8° left of Rwy 07 due to intervening terrain.

TAKE-OFF

	AIR CARRIER All Rwys	AIR CARRIER (FAR 121) All Rwys Adequate Vis Ref	
	A	1/4	2 Eng
B	3 & 4 Eng		
C			
D			