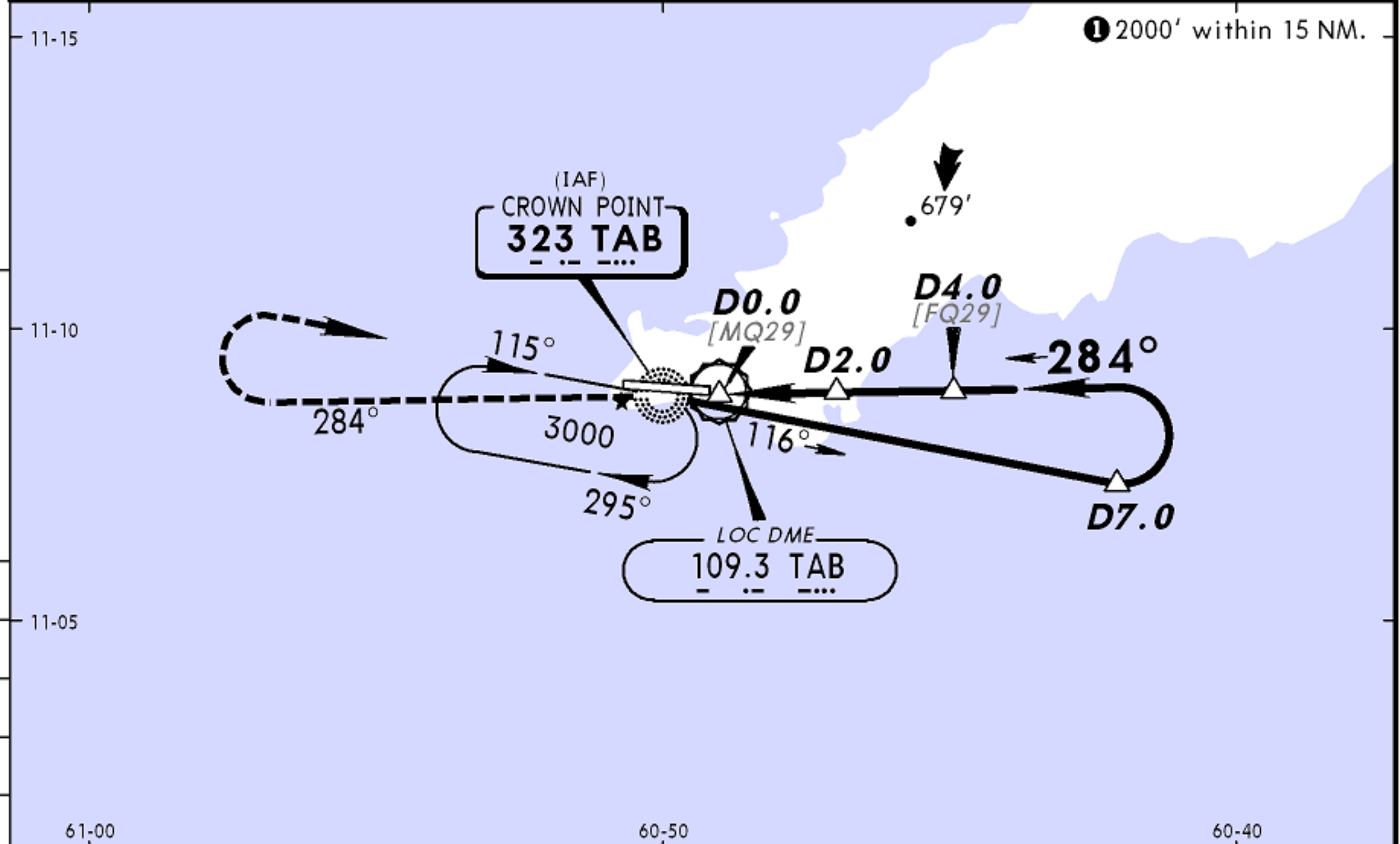
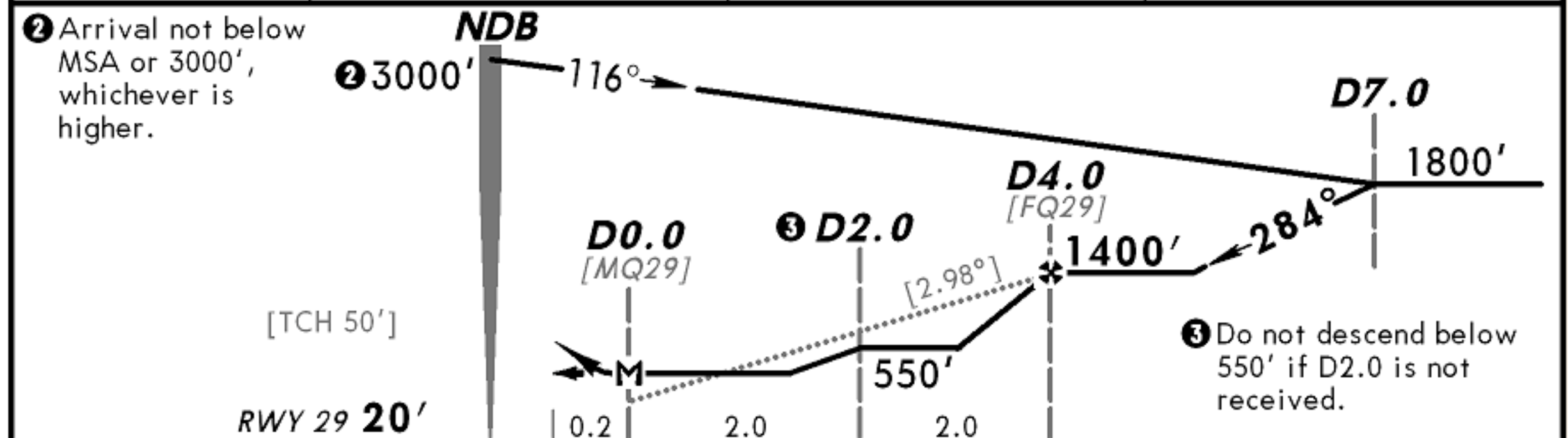


PIARCO Approach <b>119.0</b>		*CROWN POINT Tower <b>118.4</b>			*Ground <b>121.7</b>
NDB TAB <b>323</b>	Final Apch Crs <b>284°</b>	Minimum Alt D4.0 <b>1400'</b> (1380')	MDA(H) (CONDITIONAL) <b>460'</b> (440')	Apt Elev <b>38'</b>	Rwy 29 <b>20'</b>
<b>MISSED APCH: Climb STRAIGHT AHEAD on TAB NDB bearing 284° to 2000', then turn RIGHT to return to TAB NDB at 3000' or as directed by ATC.</b>					<p>MSA TAB NDB</p>
Alt Set: hPa    Rwy Elev: 1 hPa    Trans level: FL 55    Trans alt: 4100' 1. Final approach track offset by 5°. 2. DME located 1102' (336m) before threshold on extended centerline.					



TAB DME	2.0	3.0	4.0
ALTITUDE	760'	1080'	1400'



Gnd speed-Kts	70	90	100	120	140	160	2000' on TAB 323 284°	3000' RT TAB 323
Descent Gradient 5.2% or Descent angle [2.98°]	369	474	527	633	738	843		
MAP at D0.0								

STRAIGHT-IN LANDING RWY 29		CIRCLE-TO-LAND		Circling Not Authorized to the North 
MDA(H) <b>460'</b> (440') With D2.0	MDA(H) <b>550'</b> (530') Without D2.0	Max Kts	MDA(H)	
A 1600m	1600m	100	550' (512') - 1600m	
B 1600m	1600m	135	550' (512') - 1600m	
C NOT APPLICABLE	NOT APPLICABLE	C	NOT APPLICABLE	
D NOT APPLICABLE	NOT APPLICABLE	D	NOT APPLICABLE	