

PIARCO Approach
119.0

*CROWN POINT Tower
118.4

*Ground
121.7

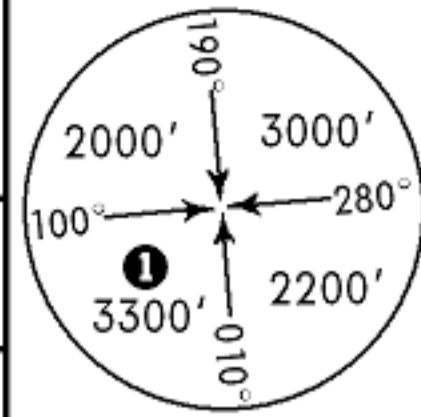
NDB
TAB
323

Final
Apch Crs
115°

Minimum Alt
D6.0
1500' (1471')

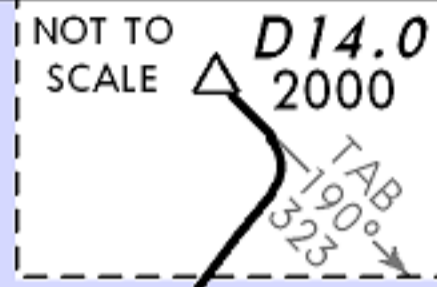
MDA(H)
460' (431')

Apt Elev 38'
Rwy 11 29'

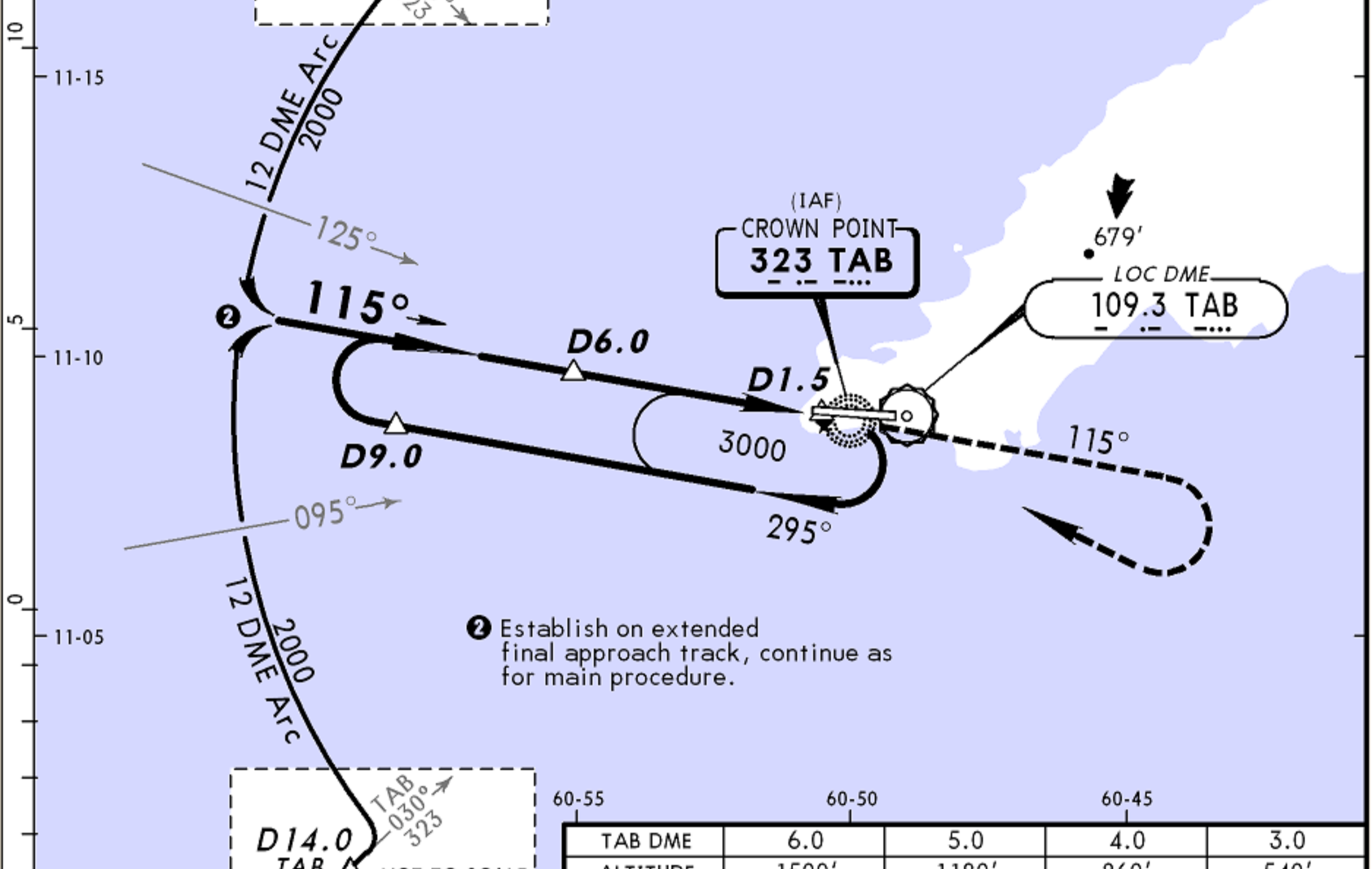


MISSED APCH: Climb STRAIGHT AHEAD on 115° to 2000', then turn RIGHT to return to TAB NDB at 3000' or as directed by ATC.

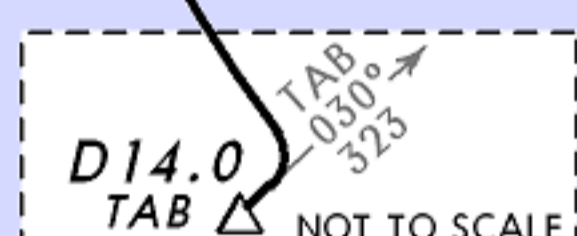
Alt Set: hPa Rwy Elev: 1 hPa Trans level: FL 55 Trans alt: 4100'
1. Final approach track offset by 6°. 2. Final approach track intercepts runway centerline at D2.3 or 0.8 NM from Threshold Rwy 11.



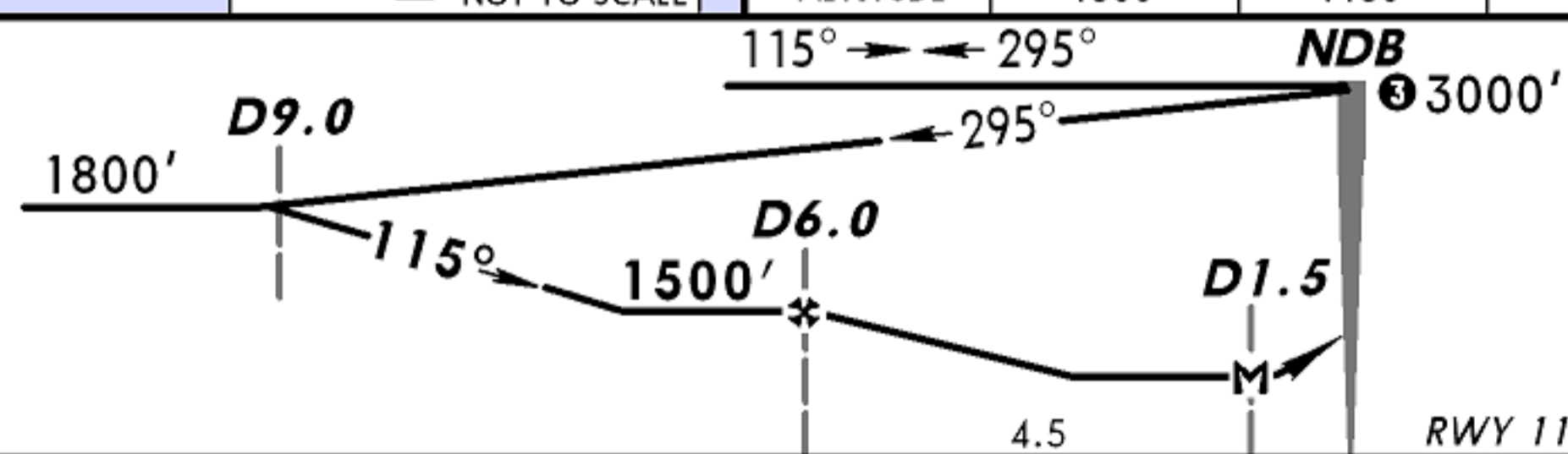
① 2000' within 15 NM.



② Establish on extended final approach track, continue as for main procedure.

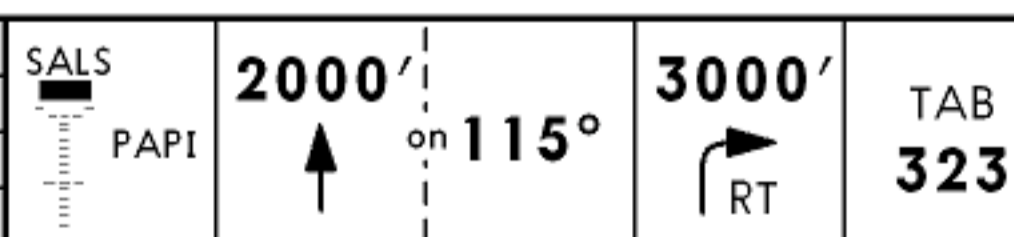


	60-55	60-50	60-45	
TAB DME	6.0	5.0	4.0	3.0
ALTITUDE	1500'	1180'	860'	540'



③ Arrival not below MSA or 3000', whichever is higher.

Gnd speed-Kts	70	90	100	120	140	160
Descent Gradient	5.2%	369	474	527	632	737
						843



STRAIGHT-IN LANDING RWY 11	
MDA(H) 460' (431')	
	ALS out

CIRCLE-TO-LAND	
MDA(H)	

A	1200m	1600m	100
B			135
C	2000m		180
D	2400m		205

540' (502') - 1600m
640' (602') - 2800m
740' (702') - 3600m

