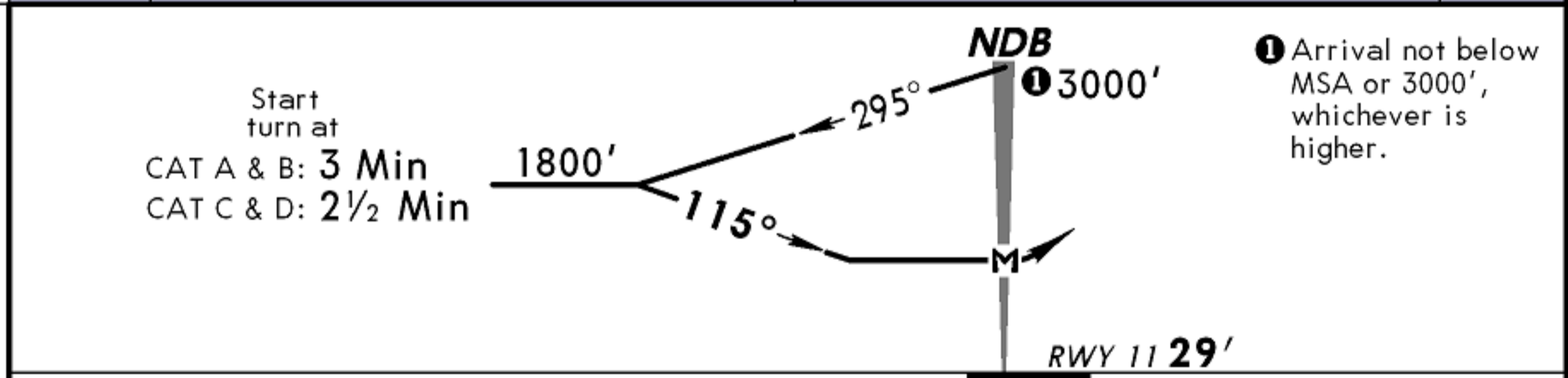
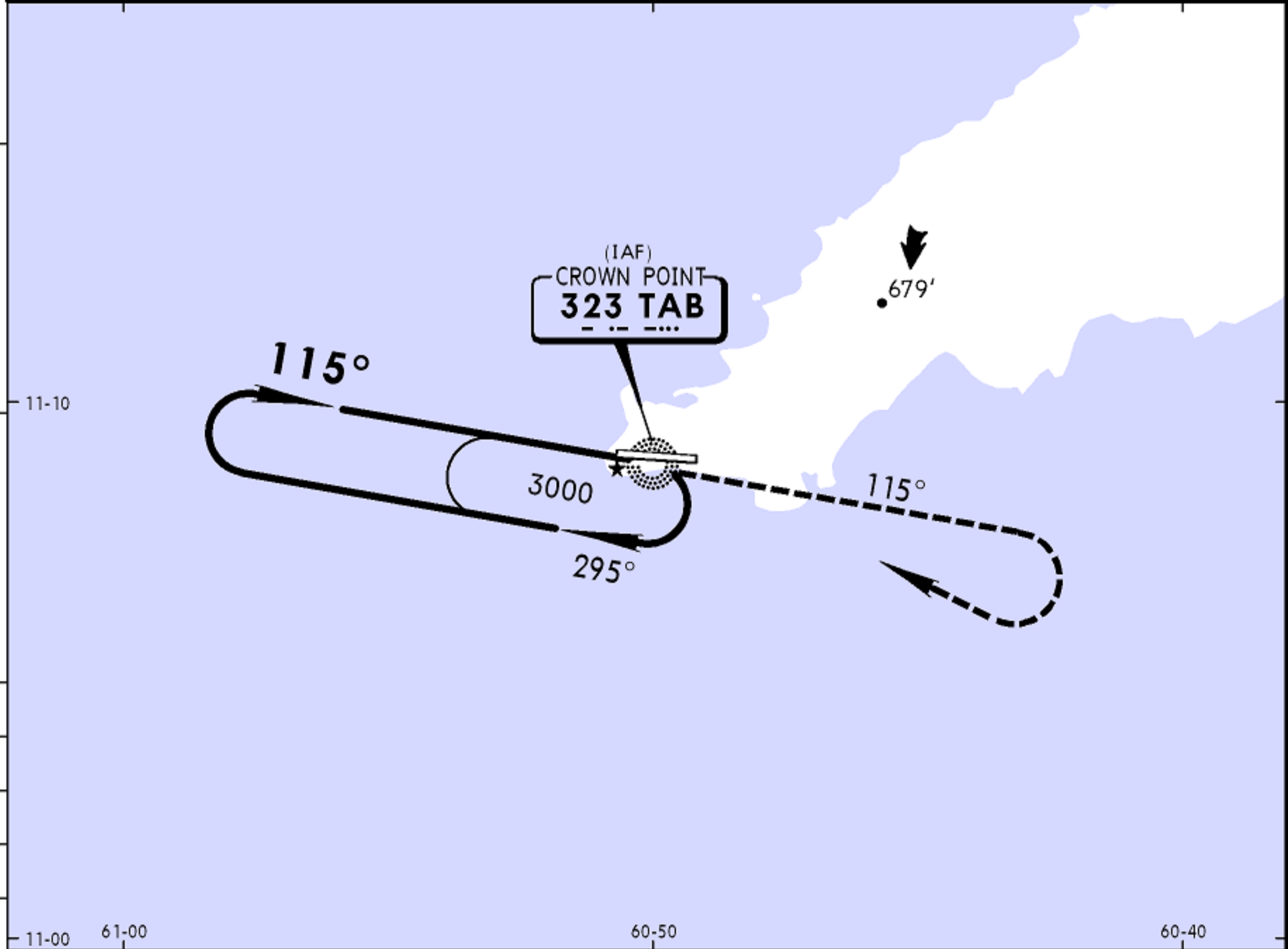


**TTCP/TAB**  
CROWN POINT INTL

10 AUG 07 **16-2**

**JEPPESEN SCARBOROUGH, TOBAGO I**  
NDB Rwy 11

PIARCO Approach <b>119.0</b>		*CROWN POINT Tower <b>118.4</b>		*Ground <b>121.7</b>	
NDB TAB <b>323</b>	Final Apch Crs <b>115°</b>	No FAF	MDA(H) <b>500' (471')</b>	Apt Elev <b>38'</b> Rwy 11 <b>29'</b>	<p>MSA TAB NDB</p>
<p><b>MISSED APCH:</b> Climb STRAIGHT AHEAD on 115° to 2000', then RIGHT turn to return to TAB NDB at 3000' or as directed by ATC.</p> <p>Alt Set: hPa      Rwy Elev: 1 hPa      Trans level: FL 55      Trans alt: 4100'</p> <p>1. Final approach track offset by 6°. 2. Final approach track intercepts runway centerline at 0.8 NM from Threshold Rwy 11.</p>					



Gnd speed-Kts	70	90	100	120	140	160	SALS PAPI	2000' on 115°	3000' RT	TAB 323
Descent Gradient 5.2%	369	474	527	632	737	843				
MAP at NDB										

STRAIGHT-IN LANDING RWY11			CIRCLE-TO-LAND		Circling Not Authorized to the North 
MDA(H) <b>500' (471')</b>			Max Kts	MDA(H)	
A	1200m	ALS out 1600m	100	<b>540' (502') -1600m</b>	
B			135		
C	2000m		180	<b>640' (602') -2800m</b>	
D	2400m		205	<b>740' (702') -3600m</b>	