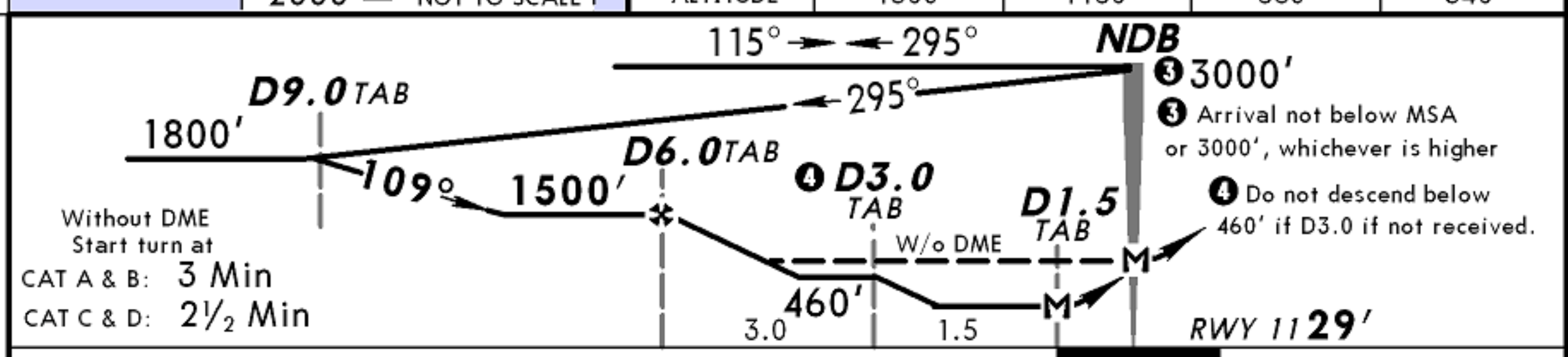
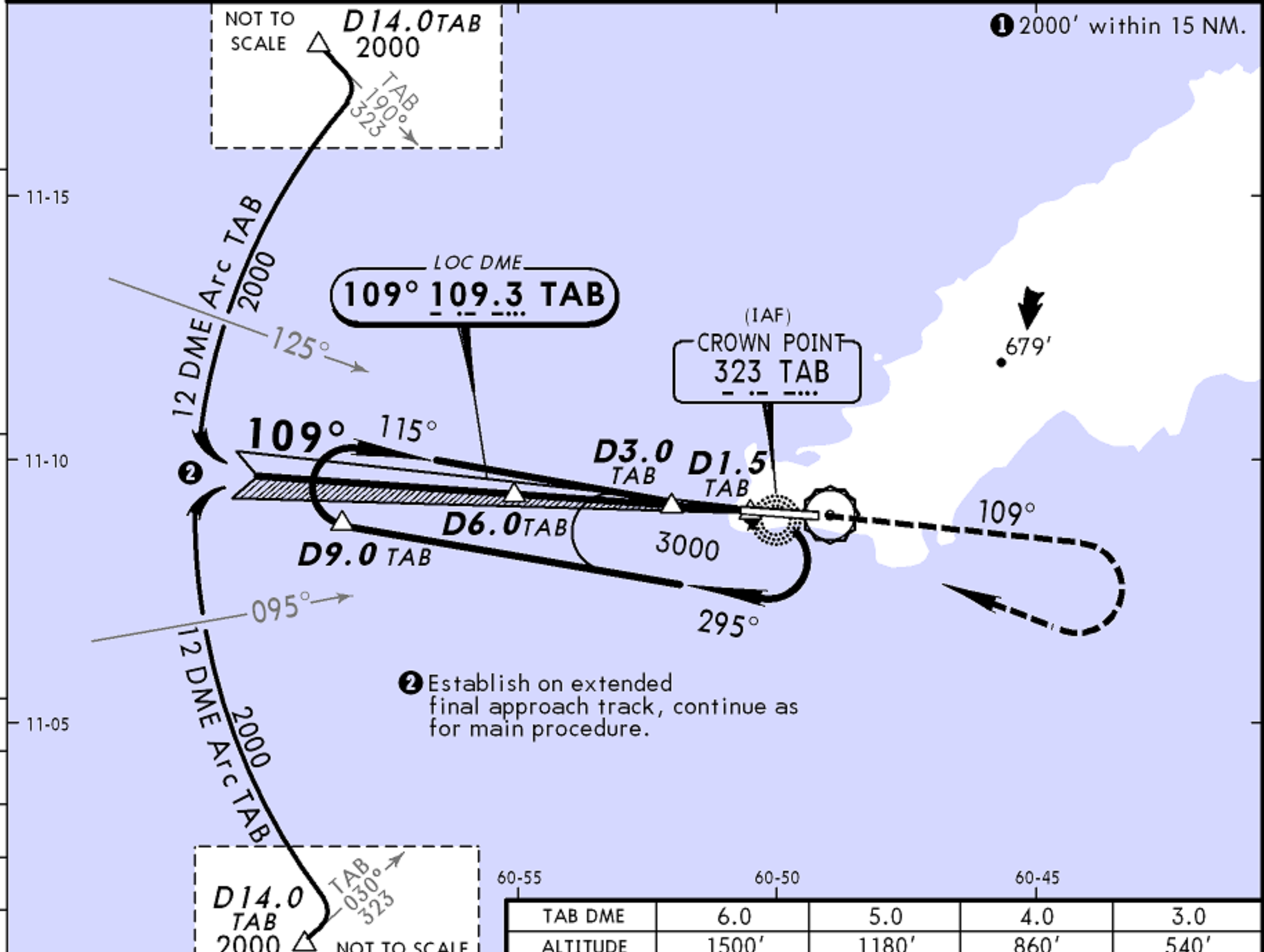
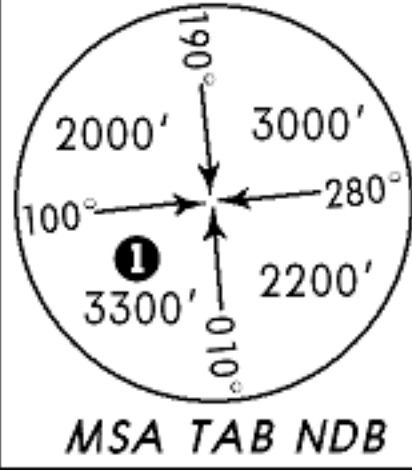


PIARCO Approach		*CROWN POINT Tower			*Ground	
119.0		118.4			121.7	
LOC TAB 109.3	Final Apch Crs 109°	Minimum Alt D6.0 TAB 1500' (1471')	MDA(H) Refer to Minimums	Apt Elev 38'	Rwy 11 29'	
MISSED APCH: Climb STRAIGHT AHEAD on 109° to 2000', then turn RIGHT to return to TAB NDB at 3000' or as directed by ATC.						
Alt Set: hPa		Rwy Elev: 1 hPa		Trans level: FL 55		Trans alt: 4100'



Gnd speed-Kts	70	90	100	120	140	160	SALS PAPI	2000' on 109°	3000' RT	TAB 323
LOC Descent Gradient 5.2%	369	474	527	632	737	843				
LOC DME: MAP at D1.5										
LOC: MAP at NDB										

STRAIGHT-IN LANDING RWY 11						CIRCLE-TO-LAND			Circling Not Authorized to the North
LOC DME		LOC		LOC		Max Kts	MDA(H)		
MDA(H) 380' (351') With D3.0 TAB		MDA(H) 460' (431') Without D3.0 TAB		MDA(H) 500' (471') Without DME			540' (502') - 1600m		
A	ALS out	ALS out	ALS out	ALS out	ALS out	100	640' (602') - 2800m		
B	1200m	1600m	1200m	1600m	1200m	135			
C	2000m		2000m		180		740' (702') - 3600m		
D	2000m		2400m		205				